

Environmental Report



Sutton St Nicholas Neighbourhood Area

March 2016

Sutton St. Nicholas Environmental Report

Contents

Non-technical summary

- 1.0 Introduction
- 2.0 Methodology
- 3.0 The SEA Framework
- 4.0 Appraisal of Objectives
- 5.0 Appraisal of Options
- 6.0 Appraisal of Policies
- 7.0 Implementation and monitoring
- 8.0 Next steps

Appendix 1: Initial SEA Screening Report

Appendix 2: SEA Scoping Report incorporating Tasks A1, A2, A3 and A4

Appendix 3: Consultation responses from Natural England and English Heritage

Appendix 4: SEA Stage B incorporating Tasks B1, B2, B3 and B4

Appendix 5: Options Considered

Appendix 6: Consultation response received (Natural England)

Appendix 7: Templates D1, amended B2 and D3 following Regulation 14 Consultation

Appendix 8: Environmental Report checklist

Non-technical summary

Strategic Environmental Assessment (SEA) is an important part of the evidence base which underpins Neighbourhood Development Plans (NDP), as it is a systematic decision support process, aiming to ensure that environmental assets, including those whose importance transcends local, regional and national interests, are considered effectively in plan making.

The Sutton St. Nicholas Parish has undertaken to prepare an NDP and this process has been subject to environmental appraisal pursuant to the SEA Directive. The Parish is a compact parish which lies approximately 5 miles to the north east of Hereford City.

The Sutton St. Nicholas NDP includes 9 objectives and it is intended that these objectives will be delivered by 9 criteria based planning policies; there are two site allocations proposed within the village, one site to the north and one site to the south. A number of options were considered across five topic areas during the preparation of the draft plan.

The environmental appraisal of the Sutton St. Nicholas NDP has been undertaken in line with the Environmental Assessment of Plan and Programmes Regulations 2004. Stage A of the SEA process involved Scoping and Stage B provided a review and analysis of the NDP. Stage C involved preparing an Environmental Report and Stage D comprises of an update to the Environmental Report following the Regulation 14 consultation.

Habitat Regulations Assessment (HRA) screening has been carried out as the Parish falls within the catchment for the River Lugg, which is a European site (River Wye Special Area of Conservation). The HRA assesses the potential effects of the NDP on the River Wye SAC.

On the whole, it is considered that the Sutton St. Nicholas NDP is in general conformity with both national planning policy contained in the National Planning Policy Framework and strategic policies set within the Herefordshire Local Plan (Core Strategy). Nor does it propose any growth that would be over and above that prescribed by strategic policies. Therefore no changes to the NDP are recommended as a result of the SEA.

Regulation 17 of the Environmental Assessment of Plans and Programmes Regulations 2004 requires the local planning authority to monitor the significant environmental effects of the implementation of the neighbourhood plan that was subject to a Strategic Environmental Assessment.

Monitoring will be recorded by Herefordshire Council in order to monitor the significant environmental effects of the implementation of Sutton St. Nicholas NDP that was subject to a Strategic Environmental Assessment. This is to identify unforeseen adverse effects at an early stage and to enable appropriate remedial actions. Results from this will be reported in Herefordshire Council's Annual Monitoring Report.

1.0 Introduction

- 1.1 This report forms the draft Strategic Environmental Assessment (SEA) of the Sutton St. Nicholas Neighbourhood Development Plan (NDP).
- 1.2 The Sutton St. Nicholas NDP proposes two site allocations as well as expecting windfall sites to come forward to meet the growth required in Policies RA1 and RA2 of the Herefordshire Local Plan (Core Strategy). The NDP will also provide general policies for guiding future development across the parish as a whole.

Purpose of the SEA

- 1.3 SEA is a requirement of EC Directive 2001/42/EC (the SEA Directive) which requires the assessment of the effects of certain plans and programmes on the environment to ensure that the proposals in that plan or programme contribute to the achievement of sustainable development.
- 1.4 The Directive was transposed into domestic legislation through the Environmental Assessment of Plans and Programmes Regulations 2004 and which applies to plans with significant environmental effects.
- 1.5. A screening opinion was carried out on the Sutton St. Nicholas NDP and it concluded that due to the range of environmental designations in and around the parish, there may be significant environmental effects and consequently an SEA would be required.

Parish Neighbourhood Plan Context

- 1.6 Sutton St. Nicholas is a compact rural parish which lies approximately 5 miles to the north east of Hereford City. The village of Sutton St. Nicholas lies towards the centre of the parish, on the edge of the flood plain. The settlement has developed around a crossroads.
- 1.7 The neighbourhood area boasts a conservation area, a number of historic churches and several ancient monuments. The River Lugg (River Wye SAC) runs to the south west of the Parish.
- 1.8 The vision for Sutton St. Nicholas in 2031 is:

“In 2031, Sutton St. Nicholas will be a sustainable and thriving local community, with the distinctive local environment of the village and surrounding countryside robustly and successfully safeguarded with new development in place to meet requirements for housing, jobs, and local services.”

- 1.9 The Sutton St. Nicholas NDP objectives are as follows:

- Objective 1 – To define the extent of the village over the plan period, 2011 to 2031
- Objective 2 – To identify land for necessary new housing development
- Objective 3 – To ensure that new housing is well designed, sustainable and makes a positive contribution to townscape and landscape
- Objective 4 – To enable new employment proposals of suitable scale and uses, consistent with the rural character of the parish and residential amenity
- Objective 5 – To protect local community services and support the provision of new facilities
- Objective 6 – To identify community needs and infrastructure to be met through developer contributions
- Objective 7 – To protect and enhance landscape character throughout the parish, particularly in respect of setting of the village

- Objective 8 – To ensure the design of new buildings is in keeping with the distinctive character and appearance of the village and rural area
- Objective 9 – to safeguard valued local open green spaces

Context of Neighbourhood Plans

- 1.10 NDPs are a relatively new type of planning document that form a key part of the Government's localism agenda. They enable local communities to develop plans that reflect local aspirations, in accordance with strategic policies.
- 1.11 The Sutton St. Nicholas NDP must therefore conform to national planning policy set within the NPPF and strategic level local policy including the Herefordshire Local Plan (Core Strategy).
- 1.12 The Herefordshire Local Plan (Core Strategy) is now adopted.
- 1.13 Once made (adopted) by Herefordshire Council, the Sutton St. Nicholas NDP will have a role in guiding future development proposals within the Parish, by setting out policies against which planning applications will be determined.

Structure of SEA

- 1.14 The structure of the document is as follows:
- Section 2 – Explains the SEA methodology and summarises the comments received in respect of the SEA Scoping Report
 - Section 3 - Introduces the Sutton St. Nicholas Neighbourhood Plan objectives and the SEA framework
 - Section 4 - Appraises the objectives contained within the Neighbourhood Plan against the SEA framework
 - Section 5 - Appraises the options considered within the Neighbourhood Plan against the SEA framework
 - Section 6 – Appraises the policies contained within the Neighbourhood Plan against the SEA framework
 - Section 7 – Discusses the implementation and monitoring of the Neighbourhood Plan
 - Section 8 - Concludes the SEA report by outlining next steps

2.0 Methodology

- 2.1 The SEA process comprised several stages and which are summarised, in some detail, below.
- 2.2 Stage A involved 4 tasks and culminated in a Scoping Report:
- *Task A1:* Identified and reviewed relevant policies, plans and programmes and environmental protection objectives from European, National and Local sources.
 - *Task A2:* Collected baseline information to provide a picture of past, present and likely future conditions within the area. This helped to establish indicators which will be used to monitor the effects and performance of the Sutton St. Nicholas NDP.
 - *Task A3:* Focused on the environmental issues identified from the baseline, highlighting key issues and problems within the neighbourhood area.
 - *Task A4:* Used the information gathered from Tasks A1-A3 to develop a set of SEA objectives, sometimes referred to as the 'sustainability framework'.

- *Task A5:* Collated the results of Tasks A1-A4 within a Scoping Report, a document which was subject to a statutory 5 week consultation.

2.3 Stage B involved 4 tasks and assessed the effects of the NDP.

- *Task B1:* Tested NDP Objectives against the SEA Objectives
- *Task B2:* Developed and refined the NDP options and policies.
- *Task B3/B4:* Predicted and evaluated the significant effects of the NDP

2.4 Stage C, the Environmental Report. In accordance with Regulation 14 of the Neighbourhood Planning Regulations an Environmental Report is prepared to accompany your draft Neighbourhood Plan.

2.5 Stage D, consultation on the Environmental Report alongside the Draft Neighbourhood Plan. This will include consultation to Statutory Stakeholders such as Natural England, English Heritage, Environment Agency and Natural Resources Wales. Following the formal consultation some changes may need to be made to both the Draft Neighbourhood Plan and the Environmental Report.

Scoping Report Consultation

2.6 With regard to the SEA scoping assessments, documents A1 to A4 were completed by a Herefordshire Council Planning Officer and sent to the Parish Council for comment, in readiness for a 5 week consultation with statutory bodies, pursuant to the Environmental Assessment of Plans and Programmes Regulations 2004.

2.7 After the document was approved by the Parish Council, the Sutton St. Nicholas SEA Scoping Report was available to four¹ statutory bodies for consultation from 14 July to 18 August 2014.

Consultation outcomes from Statutory Consultees

2.8 The consultation resulted in 2 responses, both of which are attached at Appendix 3.

2.9 Both responses were collated and incorporated within this document where relevant.

Natural England: List six further documents which should be reviewed as part of SEA Task A1. Also recommend that additional baseline data be sourced in respect of SSSIs, wildlife habitats, landscape character and the quality of agricultural land. The response acknowledges that a full HRA screen should be carried out due to proximity of the River Wye Special Area of Conservation.

Response: The six documents referred to have been added to A1 and further baseline data has been incorporated at A2.

English Heritage: Made general comments in relation to a range of Scoping Reports which were consulted on at the same time. Suggested that 'heritage assets' be defined and given greater coverage, as opposed to focusing solely on designated assets. Several changes to the wording of certain targets and indicators are suggested, too.

Response: Changes to the wording of relevant indicators and targets have been incorporated into A2 and A4.

Environment Agency: No comments received

¹ Statutory consultation bodies: Natural England; English Heritage; Environment Agency Natural Resources Wales

Natural Resources Wales: No comments received*Response: N/A***Draft Environmental Report Consultation**

- 2.10 The Draft SEA was consulted on for a 6 week period from 7 December 2015 to 29 January 2016. The three statutory bodies listed above were consulted and comments received from Natural England can be found in Appendix 6 and Template D1 in Appendix 7.
- 2.11 The document was available on Herefordshire Council's website for comment during the period highlighted above, but representations were sent to the Parish Council. However, none of the representations were directed at content or structure of the Draft Environmental Report.
- 2.12 None of the respondents to the consultation disputed or requested an amendment to the SEA of the Sutton St. Nicholas NDP.

3.0 The SEA Framework

- 3.1 As mentioned previously, Stage A of the SEA identifies and reviews relevant policies, plans and programmes and environmental protection objectives from European, National and Local sources (refer to Table A1 in Appendix 2 for details of those documents that were reviewed in completing Stage A of SEA on the Sutton St. Nicholas NDP).
- 3.2 The requirement to undertake this 'context review' is contained in Annexes 1(a) and (e) of the SEA Directive which states that an Environmental Report should include:

"...an outline of the contents, main objectives of the plan or programme and relationship with other relevant plans and programmes" and

"...the environmental protection objectives, established at international, Community or Member State level, which are relevant to the plan or programme and the way those objectives and any environmental considerations have been taken into account during its preparation"

Policy context

- 3.3 The Sutton St. Nicholas NDP will deliver the Local Plan (Core Strategy) at parish level by adding locally specific detail to strategic policies. As a consequence, the Scoping Report for the NDP was based on the context review Herefordshire Council undertook for its Local Plan (Core Strategy).
- 3.4 The results of this assessment (context review) provide the source of the local baseline data and have been incorporated into the SEA framework. It should be noted that:
- No list of policies, plans and programmes can ever be exhaustive and that Herefordshire Council has selected those considered to be of particular relevance to the planning system;
 - New or revised plans and policies can emerge during the SEA process
- 3.5 The following strategies and plans have been reviewed and, where appropriate, incorporated within the SA Framework objectives:
- *The EC Conservation of Habitats and Species Regulations (2010)* - These regulations transpose the Habitats Directive in England, Wales and to a limited extent Scotland by ensuring that activities are carried out in accordance with the Habitats Directive,

which is to protect biodiversity through the conservation of natural habitats and species of wild flora and fauna.

- *The EC Water Framework Directive (2000)* - Commits all EU member states to achieve good qualitative and quantitative status of all water courses by 2015
- *The Wildlife and Countryside Act (1981)* - The major legal instrument for wildlife protection in Britain, although other significant acts have been passed since. It has numerous parts and supplementary lists and schedules many of which have been amended since publication.
- *Biodiversity 2020: A strategy for England's wildlife and ecosystem services (2011)* - Forms part of the UK's Post-2010 Biodiversity Framework by setting out England's contribution towards the UK's commitments under the United Nations Convention of Biological Diversity.
- *The Countryside and Right of Way Act (2000)* - Creates a statutory right of access on foot to certain types of open land, to modernise the public rights of way system, to strengthen nature conservation legislation, and to facilitate better management of AONBs
 - *The Natural Environment and Rural Communities Act (2006)* - Designed to help achieve a rich and diverse natural environment and thriving rural communities through modernised and simplified arrangements for delivering Government policy.
 - *Revised EU Sustainable Development strategy (2009)* - Sets out a single strategy on how the EU will more effectively meet its long-standing commitment to meet the challenges of sustainable development.
 - *National Planning Policy Framework (NPPF) (2012)* - Consolidates the suite of PPG/PPS into one succinct planning policy document.
 - *Planning Practice Guidance (2013)* - Sets out the vision, objectives and policies for the Herefordshire Local Plan (Core Strategy), which will guide development across the county up to 2031.
 - *Herefordshire Local Transport Plan 3 (LTP) 2013-2015* - Sets out the Council's strategy for supporting economic growth, social inclusion and reducing the environmental impacts of transport, as well as the program of investment for the period April 2013 to April 2015.
 - *Understanding Herefordshire Report (2014)* - Important to understand the place such as the local economy natural and built environment in which people live, learn and work as part of understanding their quality of life. Enable development for economy and housing to required levels and growth should be supported by sustainable transport measures.
 - *Malvern Hills AONB Management Plan 2009-2014 (2009)* - Identifies the issues and challenges facing the special features of the area and contains 24 guiding principles and 46 strategic objectives which will help address them.
 - *Wye Valley AONB management Plan 2009-2014 (2009)* - The Management Plan is the prime document which sets out the vision for the area and the priorities for its management.
 - *Herefordshire Economic Development Strategy 2011-2016* - Aims to increase the economic wealth of Herefordshire by setting out proposals and to support business growth up to 2016.

- *Herefordshire Employment Land Study (2012)* - Includes employment land assessments for the plan period 2011-2031. The study includes Quantitative and Qualitative assessments of employment land, assessment of market demand and need, as well as providing forecasts and recommendations for future employment need over the plan period.
- *Herefordshire Strategic Housing Land Availability Assessment (SHLAA) (2009)* - The SHLAA aims to justify site allocations in plans by:
 - Identifying sites which are capable of delivering housing development
 - Assessing sites for their housing potential; and
 - Predicting when a site could be developed for housing.
- *Herefordshire Local Housing Market Assessment (LHMA) (2013)* - Builds on an earlier Strategic Housing Market Assessment (SHMA) developed for Herefordshire and Shropshire. Its purpose is to inform the Local Plan's policies regarding housing need and demand (for market and affordable housing) within each of the 7 Housing Market Areas (HMAs) in Herefordshire between 2011 and 2031.
- *Herefordshire Local Housing Requirements Study (2012)* - Technical assessment of the housing market and potential future local housing requirements which supports planning policy regarding the amount of growth, housing tenure and housing type needed within Herefordshire up to 2031.
- *Herefordshire Rural Housing Background Report (2013)* - Provides the justification for the proportional housing growth targets outlined in the Core Strategy
- *Herefordshire Draft Gypsies and Travellers Assessment (2013)* - Assesses the accommodation needs of Gypsies and Travellers across Herefordshire.
- *Herefordshire Local Biodiversity Action Plan (2007)* - Focuses conservation efforts on the areas within Herefordshire that will result in the greatest benefit for ecological networks, habitats and species.
- *Building Biodiversity into the LDF (2009)* - Provides the Council's Local Plan (Core Strategy) with evidence in respect of biodiversity and geodiversity, identifying both opportunities and constraints across Herefordshire.
- *Herefordshire Green Infrastructure Strategy (2010)* - Develops a framework of natural and culturally important features and functions so that planning for a sustainable future is at the heart of planning within Herefordshire.
- *Renewable Energy Study (2010)* - Assesses the energy demand within Herefordshire and the ability for the county to accommodate renewable and low carbon energy technologies.
- *Herefordshire Playing Pitch Assessment (2012)* - Produces a strategic framework, audit and assessment and needs analysis of outdoor sports pitches and facilities for Herefordshire. The document arises as a result of a recommendation in the Herefordshire and Worcestershire Sports Facilities Framework to develop local standards for playing fields and sports pitches throughout Herefordshire.
- *Open Spaces Study (2006)* - The 2006 space audit and assessment of need is a snap shot of the quality, quantity and distribution of open space across Herefordshire.

- *Play Facilities Study (2012)* - The Play Facilities Study 2012 updates the previous play facilities analysis under the Open Spaces Study 2006 and provides guidance and a framework for the development, delivery and continued sustainability of providing new and improved play facilities for children and young people in Herefordshire to 2031.
- *Strategic Flood Risk Assessment (SFRA) and Water Cycle Study (2009)* - The Strategic Flood Risk Assessment (SFRA) provides a summary of flood risk in Herefordshire to inform the location of future development. The Water Cycle Study examines how water resources and water supply infrastructure, wastewater treatment, water quality, sewerage and flood risk could constrain growth across Herefordshire.

3.6 Appendix 1 of the Sutton St. Nicholas plan Scoping Report provides additional detail on the Plans, Policies and Programmes mentioned above and identifies the implications for the SEA and NDP.

SEA Objectives and baseline characteristics

3.7 The SEA objectives that were used at Stages A and B of the process are listed in the following table.

SEA Objective	
1	To maintain or enhance nature conservation (biodiversity, flora and fauna)
2	To maintain or enhance the quality of landscapes and townscapes
3	To improve the quality of surroundings
4	To conserve or where appropriate enhance the historic environment and culture heritage
5	To improve air quality
6	To reduce the effect of traffic on the environment
7	To reduce contributions to climate change
8	To reduce vulnerability to climate change
9	To improve water quality
10	To provide for sustainable sources of water supply
11	To avoid, reduce and manage flood risk
12	To conserve soil resources and quality
13	To minimise the production of waste
14	To improve the health of the population
15	To reduce crime and nuisance
16	To conserve natural and manmade resources

3.8 The SEA objectives detailed above conform to the SEA Directive, and are derived from the Sustainability Appraisal undertaken for the Herefordshire Local Plan Core Strategy 2011-2031.

3.9 Baseline information gathered during Stage A of the SEA process provided details of the current environmental characteristics of the neighbourhood area and the status of its natural assets and features (refer to Appendix 2). This information was analysed as part of Task B2 of SEA, which looked at the extent to which the emerging NDP policies will help or obstruct these characteristics.

3.10 Following the completion of Task B2 of SEA it was apparent that the largest environmental issue within the Group Parish has an impact on the County as a whole is water quality; the River Wye, though currently meeting all its conservation objectives, will require effective

management, in order to ensure that the quality of water does not deteriorate to the point that nutrient targets are missed further downstream.

- 3.11 The NDP does proposes two sites be allocated for development the plan also contains criteria-based policies which will help to mitigate against the potential environmental issues arising from the allocated sites. On this basis, the delivery of the NDP should not exacerbate existing problems regarding water quality or have an unacceptable adverse impact.
- 3.12 Baseline characteristics within the SEA detail the current environmental status of environmental characteristics in the neighbourhood plan area from different sources. The source of Baseline Information used in Table A2 in Appendix 2, and analysed in Table B2 can be found in Appendix 4 Baseline characteristics in relation to the Sutton St. Nicholas Plan SEA objectives are listed below.
- 3.13 There are three objectives for which there is no local baseline data available and therefore this provides a limitation on the baseline data and whether the NDP policies are able to more towards or away from this data, this also means that there are no future trends to link the SEA objective too.

4.0 Assessing the NDP Objectives

- 4.1 The objectives listed in the NDP that aim to realise the vision for Sutton St. Nicholas in 2031 are detailed in paragraph 1.9 above.
- 4.2 The table below tests these NDP objectives against the SEA objectives, providing a summary of the results of Task B1 of SEA. The full results are available at Appendix 4 of this report.
- 4.3 The majority of those NDP objectives which have a relationship with the SEA framework are positively compatible with it or have a neutral effect. Some of the relationships between the Plans objectives to the SEA objectives remain unclear due to the full details of developments not being known, i.e design, density etc. and potential vehicular increase due to the rural nature of the Parish, which could impact upon air quality and vulnerability to climate change.
- 4.4 The NDP and local Plan policies provide mitigation towards the location of new development to ensure the impact of such is reduced and therefore a more positive outcome against the SEA objective is expected long term.

Key:	
+	Compatible
-	Possible conflict
0	Neutral
X	No relationship between objectives
?	Unclear, more information needed

NDP Objectives	SEA Objectives															
	1	2	3	4	5	6	7	8	9	10	11	12	13	14	15	16
Objective 1	+	+	+	+	x	x	x	x	x	x	x	+	x	x	x	+
Objective 2	?	+	?	+	x	+	?	+	+	x	+	+	x	x	x	+
Objective 3	+	+	+	+	x	?	?	?	?	?	?	?	x	x	x	?
Objective 4	?	x	x	+	x	?	?	?	x	x	?	?	?	x	x	?

NDP Objectives	SEA Objectives															
	1	2	3	4	5	6	7	8	9	10	11	12	13	14	15	16
Objective 5	x	x	+	+	x	x	x	x	x	x	?	x	?	+	+	+
Objective 6	x	+	+	+	x	+	x	x	x	x	+	+	x	x	x	+
Objective 7	+	+	+	+	x	+	+	?	?	?	+	?	x	x	x	+
Objective 8	+	+	+	+	x	?	?	?	?	?	?	?	x	x	x	?
Objective 9	+	+	?	?	x	?	?	x	x	x	?	?	x	+	+	+

5.0 Assessing the NDP Options

- 5.1 All options that were considered by Sutton St. Nicholas Parish during the development of their Plan have been assessed as part of the SEA, the summary matrix of the assessment can be found in Table B2 options these tables are in Appendix 4.
- 5.2 The options covered the topics that are likely to formulate the topics going forward in the Plan. These options were formulated from the Community Plan but were also considered at public consultation events across the Parish in early 2014. The results of which will feed into the identification of the preferred options and ultimately the draft policies.
- 5.3 A 'do nothing' option was also considered by the Parish, i.e. not undertaking a Neighbourhood Development Plan, however this was disregarded at an early stage by the Parish Council.
- 5.4 The Sutton St. Nicholas options all had a generally positive or unknown impact upon the Baseline data and SEA objectives, in particular Option 4a and Option 5a would have the least impact upon the environment and move towards the SEA objectives. The Option 2b would be more unknown due to not knowing the location of any new development without a settlement boundary; therefore the policy and definition of a new settlement boundary will need to consider the SEA objectives.
- 5.5 Overall all of the options had mainly a positive effect on the SEA objectives and baseline, if the policies that are developed incorporated the elements of the options that are ensuring mitigation of new development and additional details are provided for the location and design of any proposed site then the assessment of the policies should result in a positive result. As these options were generally moving towards the SEA objectives any further alternatives would probably be moving away and therefore no further options are required to be assessed.

NDP Options	SEA Objectives															
	1	2	3	4	5	6	7	8	9	10	11	12	13	14	15	16
Option 1a	+	+	+	+	+	+	+	+	+	+	+	+				+
Option b	x	x	x	x	x	x	x	x	x	x	x	x				x
Option 2a	+	+	+	+	+	+	+	+	+	+	+	+				+
Option 2b	?	?	+	?	+	+	+	+	+	?	?	?				+
Option 3a	++	++	+	+	+	+	+	+	+	+	+	+				+
Option 3b	+	++	+	++	+	+	+	+	+	+	+	+				+
Option 4a	++	++	++	++	+	+	+	+	+	+	++	+				++
Option 4b	+	+	+	+	+	+	+	+	+	+	+	+				+
Option 5a	++	++	++	++	+	+	+	+	+	+	+	+				+
Option 5b	+	+	+	+	?	?	+	+	+	+	?	+				?

6.0 Appraisal of the policies

- 6.1 A key part of developing a plan such as the Sutton St. Nicholas NDP is developing a range of options and testing these, so that a preferred way forward can be selected.

6.2 The following, emerging set of policies and two site allocations were appraised for the purposes of Stage B of the SEA:

- Policy 1 – Settlement Boundary
- Policy 2 – Delivering new Housing
- Policy 3 – Criteria for new housing development
- Policy 4 – Small-scale Employment
- Policy 5 – Local Community Facilities
- Policy 6 – Landscape
- Policy 7 – Building Design
- Policy 8 – Open Spaces
- Policy 9 – Green Infrastructure (New policy added following Regulation 14)
- Housing Site 1 – Land adjacent to the Linnings (18 dwellings)
- Housing site 2 – Land at the Lane (20 dwellings)

Stage B of SEA

- 6.3 In the context of Task B1 of SEA, the previous section of this report identified that many of the NDP objectives are compatible with the SEA framework, while others had either a neutral impact, no relationship with the SEA objectives or if needed; further information such as location of development. Additional policy safeguards within the NDP and Local Plan (Core Strategy) would help mitigate any possible conflicts.
- 6.4 With regard to Task B2 of SEA, the NDP policies were measured against both the SEA framework and the baseline characteristics identified during Stage A of the process; here, there was no baseline data available in respect of SEA Objectives 3 and 9. Full details of this appraisal are attached at Appendix 4.
- 6.5 The policies largely score as positive or neutral against the SEA objectives and will not, therefore, have an adverse impact on the baseline characteristics or immediate environmental impacts. This is because they are criteria based policies which only consider schemes on their own merits, as and when planning applications are submitted to the local planning authority.
- 6.6 There are some unknown factors, particularly where the location of specific piece of development (i.e tourist facilities or business units) is not yet known.

NDP Policies	SEA Objectives															
	1	2	3	4	5	6	7	8	9	10	11	12	13	14	15	16
Policy 1	++	++	+	+	0	0	x	x	x	x	+	+	x	x	x	+
Policy 2	+	+	+	+	+	+	?	+	?	+	+	+	?	x	x	+
Policy 3	++	++	+	++	x	+	+	+	+	0	+	+	+	x	x	+
Policy 4	+	+	+	+	0	+	+	0	x	x	+	+	+	0	+	+
Policy 5	+	+	+	+	x	+	x	x	x	x	+	x	x	+	+	+
Policy 6	++	++	++	+	+	0	+	+	0	x	+	+	x	+	x	++
Policy 7	++	++	+	+	x	x	0	?	0	x	+	+	x	x	x	++
Policy 8	++	+	+	+	x	x	x	+	0	x	+	+	x	+	x	++
Policy 9	++	+	+	+	x	x	+	+	0	x	+	+	x	+	x	++
Site 1	+	+	+	+	x	?	?	x	x	x	+	+	x	x	x	+

NDP Policies	SEA Objectives															
	1	2	3	4	5	6	7	8	9	10	11	12	13	14	15	16
Site 2	+	+	+	+	x	?	?	?	0	x	?	+	x	x	x	+

- 6.7 The results of Task B3, as shown at Appendix 4, demonstrate that the cumulative impact of the NDP policies over the course of the plan period is generally positive. Although some policies may have a neutral or uncertain impact during the first 5 years of the plan period, there is no reason why they cannot have a positive effect in the medium to long-term due to policy safeguards included in the Local Plan (Core Strategy); these safeguards should avoid or mitigate against unacceptable adverse impacts.
- 6.8 Task B4 of SEA brings together the results of earlier tasks and thus identifies the cumulative impact of the entire of the NDP. This task, which is also attached at Appendix 4, reveals that the objectives and policies contained in the Sutton St. Nicholas NDP are in general conformity with the Local Plan (Core Strategy), which means that the cumulative effect of the plan will contribute to the achievement of the SEA objectives.
- 6.9 Following the Regulation 14 consultation, there were some minor wording alterations within policies 3, 4, 5, including adding details such promoting active travel, and ensuring there is capacity within the wastewater treatment works. Policy 1 altered the settlement boundary slightly, by including two new areas, this was demonstrated on the map the policy wording remains the same. There is a new policy that has been introduced since the consultation, Policy 9 – Green Infrastructure.
- 6.10 The results of the amended policies can be seen in full within appendix 7, amended B2 and template D3, and are shown in the table above.
- 6.10 None of the NDP policies are considered to be in direct conflict with or propose greater levels of growth and development than strategic policies contained in the Local Plan (Core Strategy), which themselves have undergone a full Sustainability Appraisal.

7.0 Implementation and monitoring

- 7.1 Herefordshire Council as the Local Planning Authority should make arrangements to monitor the significant effects of implementing a neighbourhood plan.
- 7.2 Regulation 17 of the Environmental Assessment of Plans and Programmes Regulations 2004 requires the Local Planning Authority to monitor the significant environmental effects of the implementation of any NDP that was subject to SEA, in order to identify unforeseen adverse effects at an early stage and to enable appropriate remedial actions.
- 7.3 Accordingly, Herefordshire Council will monitor outcomes from the NDP policies and the results of these will be reported in the Council's Annual Monitoring Report (AMR).
- 7.4 The AMR runs from 1 April to 31 March each year and the topics covered therein include the following:
- Housing delivery;
 - Previously developed land
 - Housing completions
 - Affordable housing conditions
 - Employment land delivery.

8.0 Next steps

- 8.1 This report alongside the final NDP plan will be formally submitted to Herefordshire Council and will be subject to a 6 week consultation as part of Regulation 16. Following this Consultation the Plan will be submitted for examination.

Appendix 1

Initial Habitat Regulations Assessment and Strategic Environmental Assessment Screening Notification

The Neighbourhood Planning (General) Regulation 2012 (Reg. 32)

Conservation of Habitats and Species Regulations 2010 (d)

Neighbourhood Area:	Sutton St Nicholas Neighbourhood Area
Parish Council:	Sutton St Nicholas Parish Council
Neighbourhood Area Designation Date:	22 nd January 2014

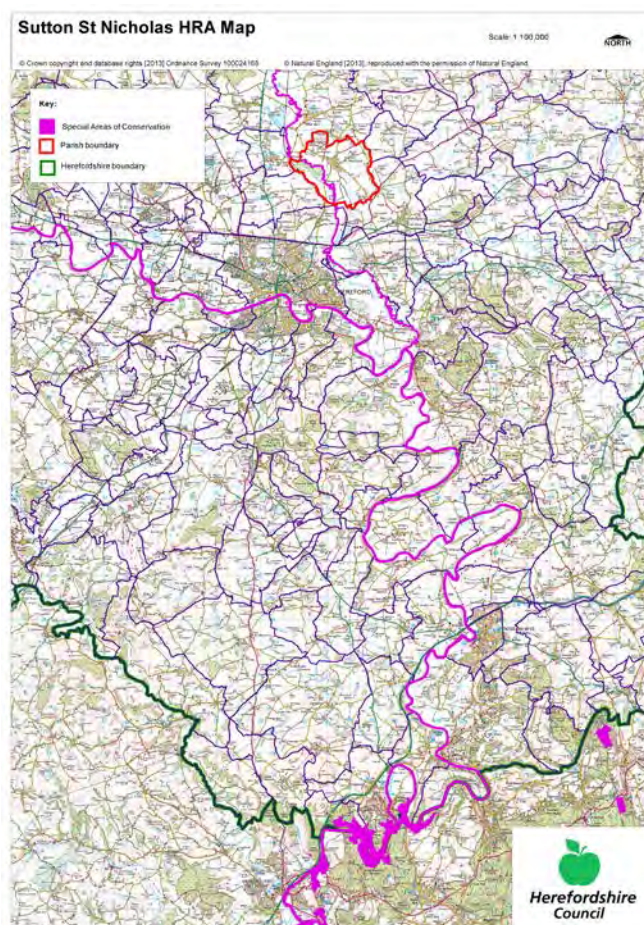
Introduction

This Initial Habitat Regulations Assessment (HRA) and Strategic Environmental Assessment (SEA) Screening has been undertaken to assess whether any European Sites exist within or in proximity to the Neighbourhood Area which could be affected by any future proposals or policies.

Through continual engagement the outcomes of any required assessments will help to ensure that proposed developments will not lead to Likely Significant Effects upon a European Site or cause adverse impacts upon other environmental assets, such as the built historic or local natural environment.

This document is copyright of Herefordshire Council, please contact the Neighbourhood Planning team if you wish to reuse it in whole or part

HRA Initial Screening: Map showing relationship of Neighbourhood Area with European Sites (not to scale)



Initial HRA Screening

River Wye (including the River Lugg) SAC:

Does the Neighbourhood Area have the River Wye (including the River Lugg) in or next to its boundary?	Y	The River Lugg SAC runs through the Parish
Is the Neighbourhood Area in the hydrological catchment of the River Wye (including the River Lugg) SAC?	Y	The Parish is within the hydrological catchment of the River Lugg
If yes above, does the Neighbourhood Area have mains drainage to deal with foul sewage?	Y	There is mains drainage in Sutton St Nicholas

Downton Gorge SAC:

Is the Neighbourhood Area within 10km of Downton Gorge SAC?	N	Downton Gorge is 27.7km away from the Parish
---	---	--

River Clun SAC:

Does the Neighbourhood Area include: Border Group Parish Council or Leintwardine Group Parish Council?	N	River Clun does not border the Parish
--	---	---------------------------------------

Usk Bat Sites SAC:

Is the Neighbourhood Area within 10km of the SAC boundary?	N	Usk Bat Sites are 42.9km away from the Parish
--	---	---

Wye Valley & Forest of Dean Bat Sites SAC:

Is the Neighbourhood Area within 10km of any of the individual sites that make up the Wye Valley & Forest of Dean Bat Sites?	N	Wye Valley and Forest of Dean Bat Sites are 25.9km away from the Parish
--	---	---

Wye Valley Woodlands SAC:

Is the Neighbourhood Area within 10km of any of the individual sites that make up the Wye Valley Woodlands Site?	N	Wye Valley Woodlands are 27.1km away from the Parish
--	---	--

HRA Conclusion:

The assessment above highlights that the following European Sites will need to be taken into account in the future Neighbourhood Development Plan for the Sutton St Nicholas Neighbourhood Area and a Full HRA Screening will be required.

European Site

(List only those which are relevant from above)

River Wye (including the River Lugg) SAC

Strategic Environmental Assessment Initial Screening for nature conservation landscape and heritage features

The following environmental features are within or in general proximity to the Sutton St Nicholas Neighbourhood Area and would need to be taken into account within a Strategic Environmental Assessment. In addition, the NDP will also need to consider the other SEA topics set out in Guidance Note 9a to ensure that the plan does not cause adverse impacts.

SEA features	Total	Explanation	SEA required
Air Quality Management Areas	0	There are no AQMAs within the Group Parish	N
Ancient Woodland	1	Long Coppice (border)	Y
Areas of Archaeological Interest	0	There are no AAls within the Parish	N
Areas of Outstanding Natural Beauty	0	There are no Conservation Areas within the Parish	N
Conservation Areas	1	Sutton St Nicholas village	Y
European Sites	1	River Lugg	Y
Flood Areas		Flood Zones run along the River Lugg and also a stream/brook off the Lugg running through the south and east of the Parish	Y
Listed Buildings	Numerous	There are numerous Listed Buildings throughout the Parish	Y
Local Sites (SWS/SINCs/RIGS)	1 (RIGS) 4 (SWS)	RIGS: Upper Lyde Quarry (border) SWS: River Lugg; Sutton Hill Gravel Pit; Field south of Sutton Rhea; Wellington Marsh (border)	Y
Long distance footpaths/trails (e.g. Herefordshire Trail)	1	Three Rivers Ride (border)	Y
Mineral Reserves	6	East of Burmarsh, west of Sutton Lakes; South east of Sutton St Nicholas; South of Moreton on Lugg x 2 (border); Area around Wellington constrained by 200m zone and area north of Wellington outside 200m zone; Upper Paradise Farm to Marden Court, Marden (border)	Y
National Nature Reserve	0	There are no NNRs within the Parish	N
Registered & Unregistered parks and gardens	1 Unregistered	Sutton Court	Y
Scheduled Ancient Monuments	4	Sutton Walls (camp); Freens Court Magnates residence, moat and fishponds, Sutton St Michael; Deserted medieval village, Sutton St Michael; The Wergins Stone	Y
Sites of Special Scientific Interest	1	River Lugg (Unfavourable Recovering)	Y

Decision Notification:

The initial screening highlights that the Neighbourhood Development Plan for the Sutton St Nicholas Neighbourhood Area:

- a) Will require further environmental assessment for Habitat Regulations Assessment and Strategic Environmental Assessment.

Assessment date: 09/12/2013

Assessed by: James Latham

Appendix 1: European Sites

The table below provides the name of each European Site, which has been screened in for the purposes of neighbourhood planning in Herefordshire; includes their site features of integrity; and vulnerability data. This is based on the sites individual features of integrity and their vulnerabilities, which could include distance criteria. This has been used in identifying which parishes are likely to require a full HRA Screening of their future Neighbourhood Development Plan, to establish if their plan might have Likely Significant Effects on a European Site.

Downton Gorge
Site Features: <i>Tilio-Acerion</i> forests of slopes, screes and ravines
Vulnerability data: 10km for air quality associated with poultry units or other intensive agricultural practices.

River Clun
Site Features: Freshwater pearl mussel <i>Margaritifera margaritifera</i>
Vulnerability data: Water quality is important to maintain the site feature. Parishes either side of the River Clun will be affected.

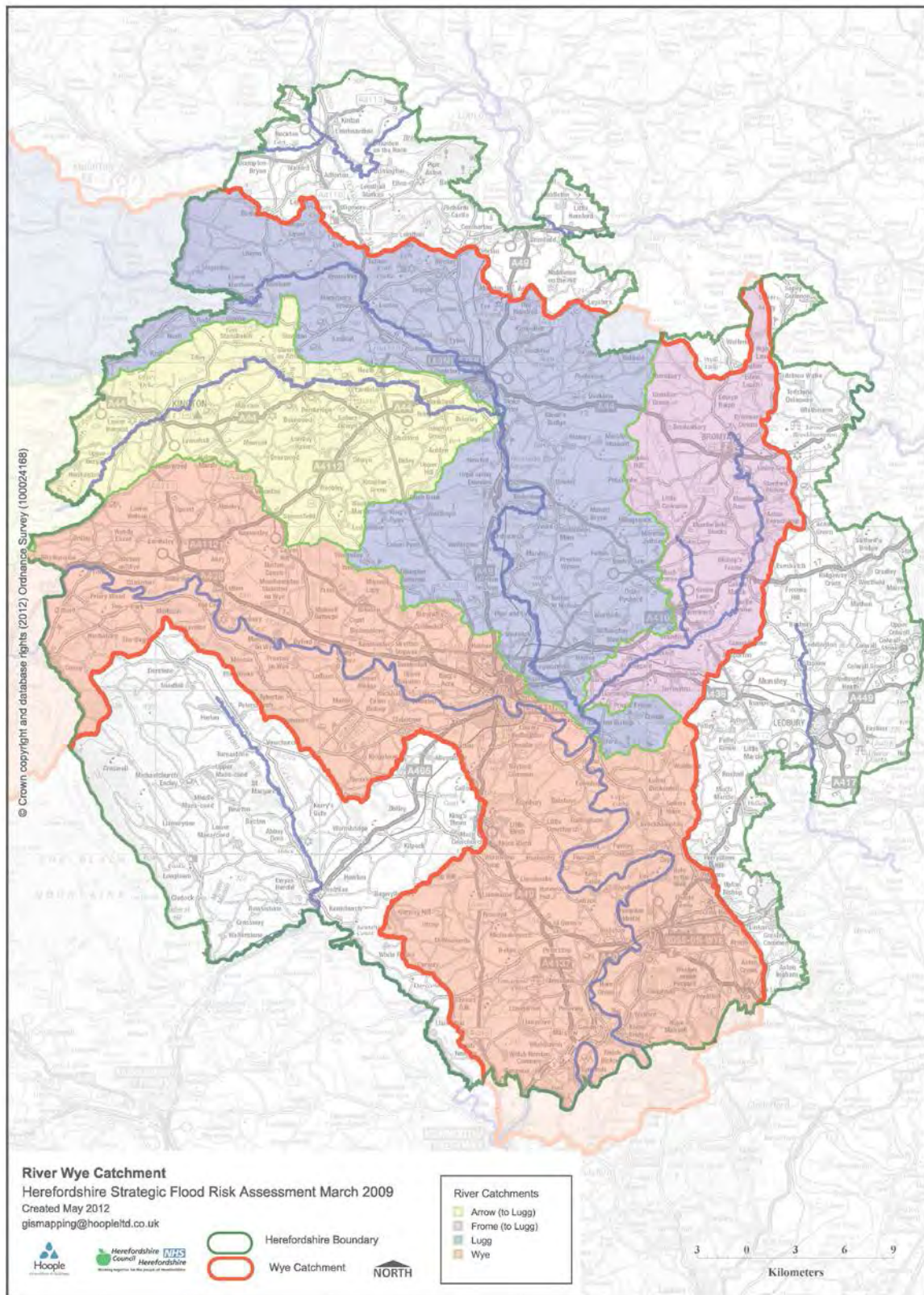
River Wye
Site Features: Water courses of plain to montane levels with the <i>Ranunculion fluitantis</i> and <i>Callitriche-Batrachion</i> vegetation. Transition mires and quaking bogs. White-clawed (or Atlantic Stream) crayfish <i>Austropotamobius pallipes</i> . Sea lamprey <i>Petromyzon marinus</i> . Brook lamprey <i>Lampetra planeri</i> . River lamprey <i>Lampetra fluviatilis</i> . Twaite shad <i>Alosa fallax</i> . Atlantic salmon <i>Salmo salar</i> . Bullhead <i>Cottus gobio</i> . Otter <i>Lutra lutra</i> . Allis shad <i>Alosa alosa</i>
Vulnerability data: Proximity: Developments should not be within 100m of the designated bank. Some developments beyond 100m may also have impacts based on proximity and these issues should be addressed where possible when developing NDP policy and choosing site allocations. Water Quality: Within the whole catchment of the River Wye, which includes the River Lugg, mains drainage issues with regards to water quality are being resolved through the Core Strategy / Local Plan and development of a Nutrient Management Plan. Welsh Water should be consulted to ensure that the proposed growth will be within the limit of their consents. Otters: "An otter will occupy a 'home range', which on fresh waters usually includes a stretch of river as well as associated tributary streams, ditches, ponds, lakes and woodland. The size of a home range depends largely on the availability of food and shelter, and the presence of neighbouring otters. On rivers, a male's home range may be up to 40km or more of watercourse and associated areas; females have smaller ranges (roughly half the size) and favour quieter locations for breeding, such as tributary streams. Otters without an established home range are known as 'transients'. They are mostly juveniles looking for a territory of their own, or adults that have been pushed out of their territories. Transient otters may use an area for a short while, but they will move on if conditions are not suitable or if they are driven away by resident otters. Transients will have been important in extending the range of otters, but they are very difficult to identify from field signs. Within a home range an otter may use many resting sites. These include above-ground shelters, such as stands of scrub or areas of rank grass, and underground 'holts' – for example, cavities under tree roots and dry drainage pipes." (Source: EA website: http://www.environmentagency.gov.uk/static/documents/Business/Otters_the_facts.pdf accessed 09/04/2013)

Usk Bat Site
Site Features: Annex I habitats present as a qualifying feature, but not a primary reason for site selection: European dry heaths, Degraded raised bogs still capable of natural regeneration, Blanket bogs, Calcareous rocky slopes with chasmophytic vegetation, Caves not open to the public, <i>Tilio-Acerion</i> forests of slopes, screes and ravines. Annex II species of primary reason for site selection: Lesser horseshoe bat <i>Rhinolophus hipposideros</i> , UK population 5%, although it is suggested this is an underestimate.
Vulnerability data: Lesser Horseshoe bats are known to migrate between 5km and 10km between their summer and winter roosts. The Lesser Horseshoe Bat is vulnerable to disturbance; light pollution; and habitat loss. Check with the planning ecologist for other issues.

Wye Valley and Forest of Dean Bat Sites
Site Features: Annex II species that are a primary reason for site selection: Lesser horseshoe bat <i>Rhinolophus hipposideros</i> . Greater horseshoe bat <i>Rhinolophus ferrumequinum</i>
Vulnerability data: Lesser Horseshoe bats are known to migrate between 5km and 10km between their summer and winter roosts. The Lesser Horseshoe Bat is vulnerable to disturbance; light pollution; and habitat loss. Check with the planning ecologist for other issues.
Greater Horseshoe bats are known to migrate between 20-30km between their summer and winter roosts.
NDPs closest to the European Site will need to consider: Woodland habitat buffer. Lesser Horseshoe Bat: Old buildings; woodland locations; sheltered valleys, extensive deciduous woods or dense scrub, close to roost sites. In areas of fragmented habitats, linear habitats such as hedgerows are important corridors. Vulnerable to loss or disturbance of both summer and winter roosts and removal of linear habitat. Greater Horseshoe Bat: Large buildings, pasture, edge of mixed deciduous woodland and hedgerows. Mixed land-use especially south-facing slopes, favours beetles, moths and insects they feed on. During the winter they depend on caves, abandoned mines and other underground sites for undisturbed hibernation. A system/series of sites required. Vulnerable to loss of insect food supply, due to insecticide use, changing farming practices and loss of broad-leaved tree-cover and loss / disturbance of underground roosts sites.

Wye Valley Woodlands
Site Features: Annex I habitats that are a primary reason for site selection: Beech forests <i>Asperulo-Fagetum</i> , <i>Tilio-Acerion</i> forests of slopes, screes and ravines, <i>Taxus baccata</i> woods of the British Isles. Annex II species present as a qualifying feature, but not a primary reason for site selection: Lesser horseshoe bat <i>Rhinolophus hipposideros</i> , 51-100 residents
Vulnerability data: Lesser Horseshoe bats are known to migrate between 5km and 10km between their summer and winter roosts. The Lesser Horseshoe Bat is vulnerable to disturbance; light pollution; and habitat loss. Check with the planning ecologist for other issues. NDPs closest to the European Site will need to consider: Woodland habitat buffer. Lesser Horseshoe Bat: Old buildings; woodland locations; sheltered valleys, extensive deciduous woods or dense scrub, close to roost sites. In areas of fragmented habitats, linear habitats such as hedgerows are important corridors. Vulnerable to loss or disturbance of both summer and winter roosts and removal of linear habitat.

Appendix 2: Wye Catchment Map

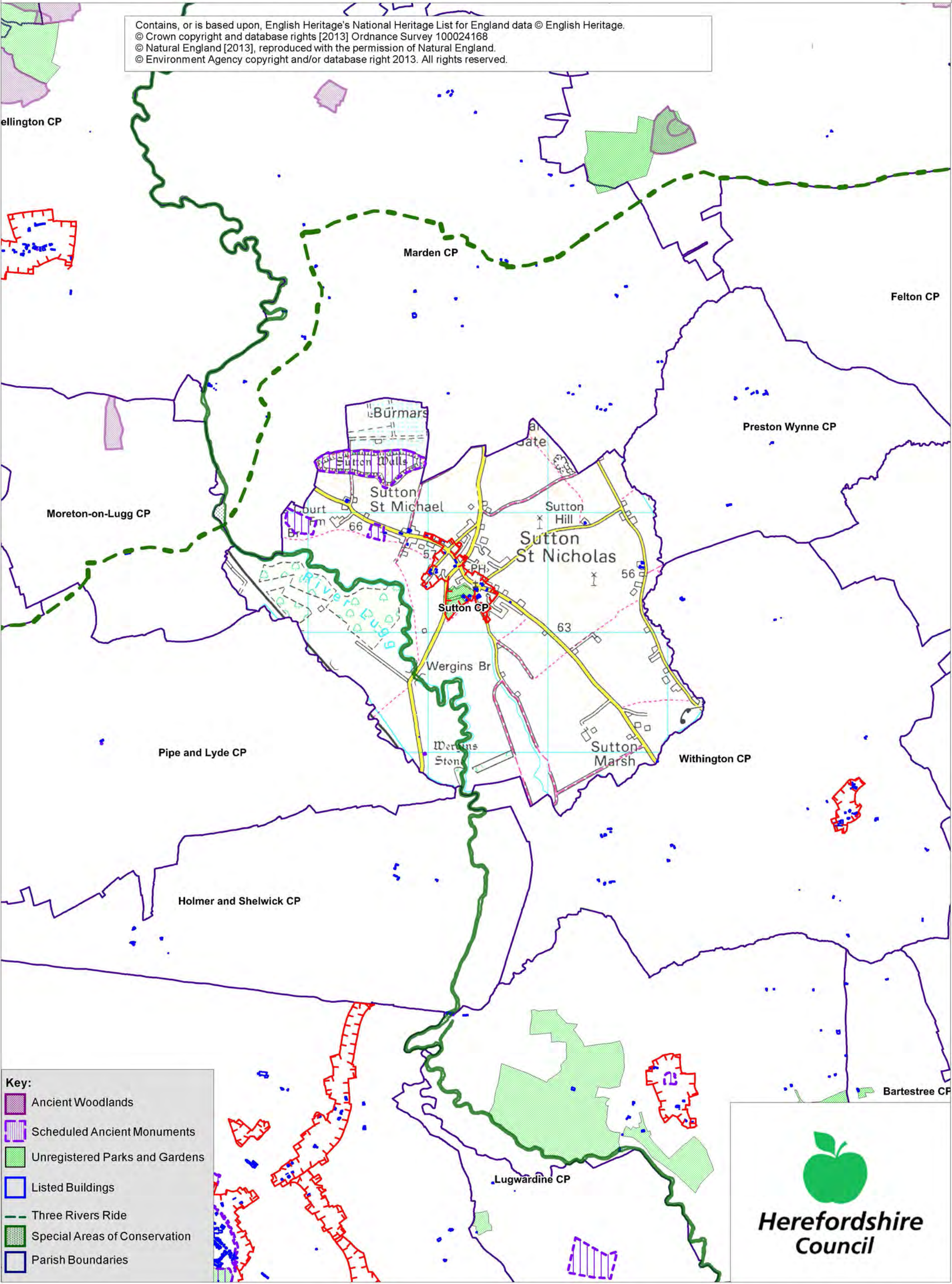


Sutton St Nicholas SEA Map 1

Scale: 1:30,000



Contains, or is based upon, English Heritage's National Heritage List for England data © English Heritage.
© Crown copyright and database rights [2013] Ordnance Survey 100024168
© Natural England [2013], reproduced with the permission of Natural England.
© Environment Agency copyright and/or database right 2013. All rights reserved.



Key:

- Ancient Woodlands
- Scheduled Ancient Monuments
- Unregistered Parks and Gardens
- Listed Buildings
- Three Rivers Ride
- Special Areas of Conservation
- Parish Boundaries

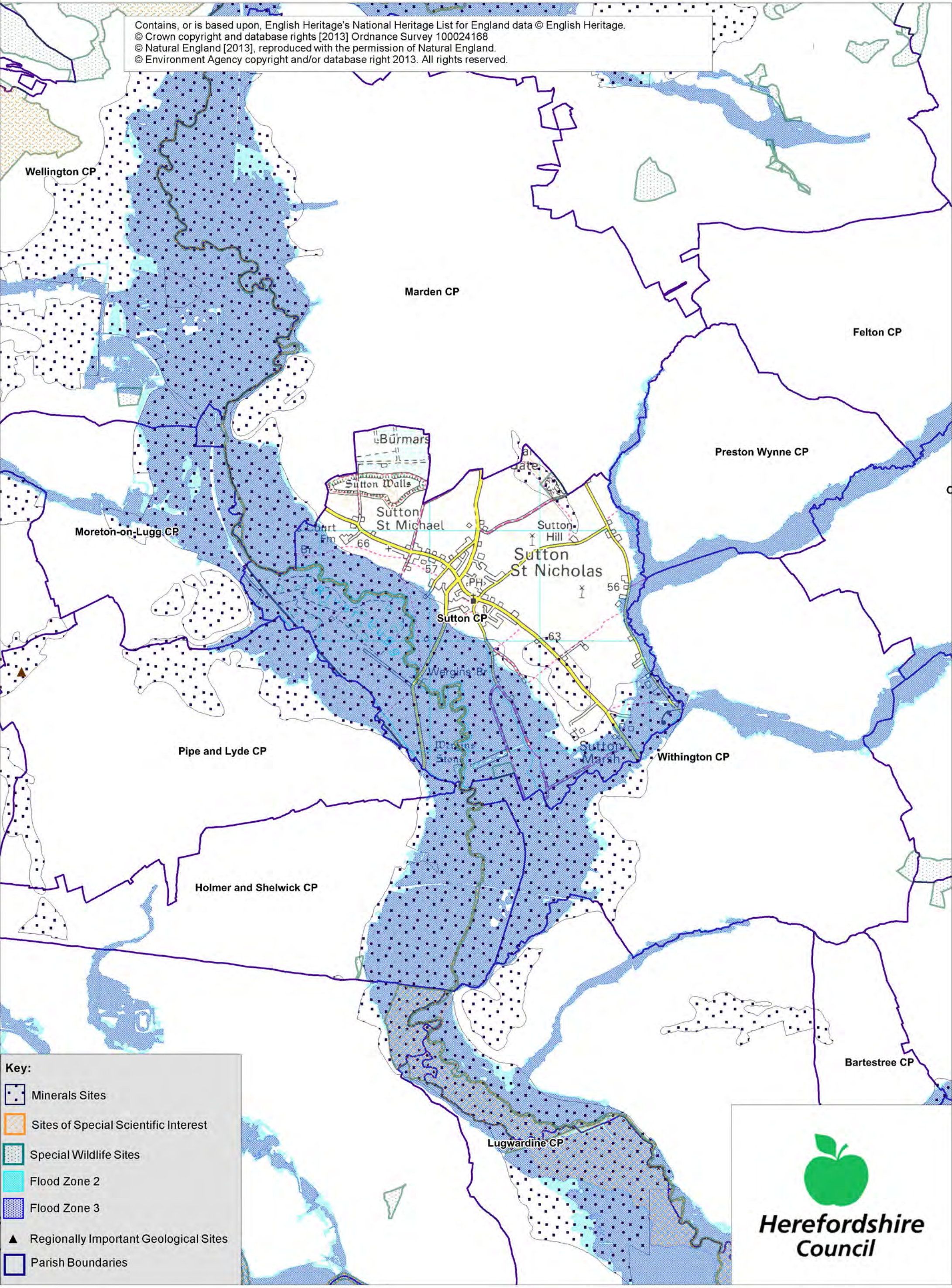
Herefordshire Council

Sutton St Nicholas SEA Map 2

Scale: 1:30,000



Contains, or is based upon, English Heritage's National Heritage List for England data © English Heritage.
© Crown copyright and database rights [2013] Ordnance Survey 100024168
© Natural England [2013], reproduced with the permission of Natural England.
© Environment Agency copyright and/or database right 2013. All rights reserved.



Key:

- Minerals Sites
- Sites of Special Scientific Interest
- Special Wildlife Sites
- Flood Zone 2
- Flood Zone 3
- Regionally Important Geological Sites
- Parish Boundaries

Herefordshire Council

Appendix 2

Strategic Environmental Assessment



Sutton St Nicholas Neighbourhood Area

Scoping Report

October 2014

Consultation on the Scoping Report

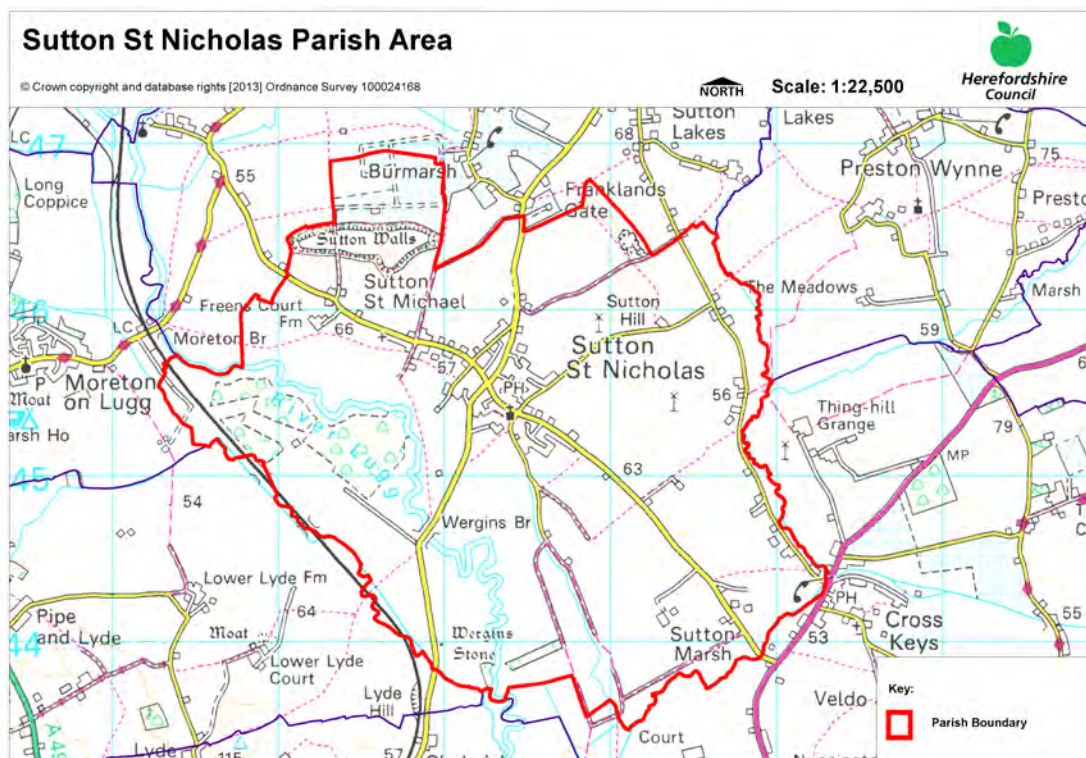
The aim of the consultation process is to involve and engage with statutory consultees and other relevant bodies on the scope of the appraisal. In particular, it seeks to:

- Ensure the SEA is both comprehensive and sufficiently robust to support the Neighbourhood Development Plan during the later stages of full public consultation;
- Seek advice on the completeness of the plan review and baseline data and gain further information where appropriate;
- Seek advice on the suitability of key sustainability issues;
- Seek advice on the suitability of the sustainability objectives.

Comments on this Scoping Report have been invited from the three consultation bodies as required by the SEA regulations, together with the Natural Resources Wales.

The three consultation bodies are as follows:

1. Natural England;
2. English Heritage;
3. Environment Agency.



Plans and Programmes	Type of document	Date	Overview	Key message, target/objective/indicator	SEA topic(s)	Implications for the NDP and SEA
The EC Conservation of Habitats and Species Regulations	European Union Legislation	2010	These regulations transpose the Habitats Directive in England, Wales and to a limited extent Scotland by ensuring that activities are carried out in accordance with the Habitats Directive, which is to protect biodiversity through the conservation of natural habitats and species of wild flora and fauna.	The Regulations make it an offence (subject to exceptions) to deliberately capture, kill, disturb, or trade in the animals listed in Schedule 2, or pick, collect, cut, uproot, destroy, or trade in the plants listed in Schedule 4. However, these actions can be made lawful through the granting of licenses by the appropriate authorities.	<ul style="list-style-type: none"> Biodiversity Cultural heritage and the landscape 	The Neighbourhood Plan should be compliant with all the relevant legislation and regulations.
The EC Water Framework Directive	European Union	2000	Commits all EU member states to achieve good qualitative and quantitative status of all water courses by 2015.	Aims for 'good status' for all ground and surface waters (rivers, lakes, transitional waters, and coastal waters) in the EU	<ul style="list-style-type: none"> Water 	The Neighbourhood Plan should be compliant with all the relevant legislation and regulations.

Plans and Programmes	Type of document	Date	Overview	Key message, target/objective/indicator	SEA topic(s)	Implications for the NDP and SEA
The Wildlife and Countryside Act (1981)	Domestic Legislation	1981	The major legal instrument for wildlife protection in Britain, although other significant acts have been passed since. It has numerous parts and supplementary lists and schedules many of which have been amended since publication.	The principle mechanism for the legislative protection of wildlife in Great Britain.	<ul style="list-style-type: none"> • Biodiversity • Cultural heritage and the landscape • Flora and fauna • Material assets • Soil 	The Neighbourhood Plan should be compliant with all the relevant legislation and regulations.
The Countryside and Right of Way Act (2000)	Domestic Legislation	2000	Creates a statutory right of access on foot to certain types of open land, to modernise the public rights of way system, to strengthen nature conservation legislation, and to facilitate better management of AONBs.	<p>The Act provides for a new right of access on foot to areas of open land comprising: Mountain (land over 600 metres); Moorland; Heath; Downland; Registered common land.</p> <p>There are provisions to consider extending the right in the future to coastal land, but not woodland despite some early publicity suggesting this.</p>	<ul style="list-style-type: none"> • Biodiversity • Cultural heritage and the landscape • Flora and fauna • Material assets • Soil 	The Neighbourhood Plan should be compliant with all the relevant legislation and regulations.

Plans and Programmes	Type of document	Date	Overview	Key message, target/objective/indicator	SEA topic(s)	Implications for the NDP and SEA
The Natural Environment and Rural Communities Act (2006)	Domestic Legislation	2006	Designed to help achieve a rich and diverse natural environment and thriving rural communities through modernised and simplified arrangements for delivering Government policy.	Provides that any public body or statutory undertaker in England and Wales must have regard to the purpose of conservation of biological diversity in the exercise of their functions.	<ul style="list-style-type: none"> • Biodiversity • Cultural heritage and the landscape • Flora and fauna • Material assets • Soil 	The Neighbourhood Plan should be compliant with all the relevant legislation and regulations.
Revised EU Sustainable Development strategy	EU Strategy.	2009	Sets out a single strategy on how the EU will better meet its long-standing commitment to meet the challenges of sustainable development.	Recognises the need to gradually change current unsustainable consumption and production patterns and move towards a better integrated approach to policy making. The Strategy sets overall objectives, targets and concrete actions for seven key priority challenges, predominantly environmental.	<ul style="list-style-type: none"> • Air • Biodiversity • Climatic factors • Cultural heritage • Flora and fauna • Material assets • Population • Soil • Water 	The NDP should take account of the objectives of the strategy, making the aim of sustainable development an integral part of its proposals.

Plans and Programmes	Type of document	Date	Overview	Key message, target/objective/indicator	SEA topic(s)	Implications for the NDP and SEA
Biodiversity 2020: A strategy for England's wildlife and ecosystem services	National Strategy	2011	Forms part of the UK's Post-2010 Biodiversity Framework by setting out England's contribution towards the UK's commitments under the United Nations Convention of Biological Diversity.	Sets out to halt overall biodiversity loss, support healthy well-functioning ecosystems and establish coherent ecological networks, with more and better places for nature for the benefit of wildlife and people.	<ul style="list-style-type: none"> Biodiversity 	The NDP should take account of the provisions of the strategy, making the most of opportunities to enhance wildlife habitats or restore degraded ecosystems in the process.
National Planning Policy Framework (NPPF)	National Planning Policy.	2012	Consolidates the suite of PPG/PPS into one succinct planning policy document.	Aims to make the planning system less complex, more accessible and able to promote growth within the ethos of sustainable development. The presumption is in favour of sustainable development.	<ul style="list-style-type: none"> Air Biodiversity Climatic factors Cultural heritage Flora and fauna Material assets Population Soil Water 	The guidance contained within the section on Neighbourhood Planning should be borne in mind during the preparation of the NDP.

Plans and Programmes	Type of document	Date	Overview	Key message, target/objective/indicator	SEA topic(s)	Implications for the NDP and SEA
Planning Practice Guidance	Government Guidance	2014	Provides guidance to local planning authorities and others on the operation of the planning system.	Offers up-to-date, electronic guidance on every aspect of planning from air quality and design to land stability and rural housing.	<ul style="list-style-type: none"> • Air • Biodiversity • Climatic factors • Cultural heritage • Flora and fauna • Material assets • Population • Soil • Water 	The NPD must be pro-growth and facilitate the provision and development of sustainable development.
Herefordshire Pre Submission Core Strategy 2011-2031	Development Plan Document (DPD)	2013	Sets out the vision, objectives and policies for the Herefordshire Local Plan (Core Strategy), which will guide development across the county up to 2031.	Outlines the emerging suite of countywide planning policies relating to housing, economic development and the environment, which the NDP will need to be in conformity with where relevant.	<ul style="list-style-type: none"> • Air • Biodiversity • Climatic factors • Cultural heritage • Flora and fauna • Material assets • Population • Soil • Water 	<p>The NDP should take account of relevant policies set within the Core Strategy.</p> <p>Where necessary, the NDP should provide services, facilities and employment opportunities that are</p>

Plans and Programmes	Type of document	Date	Overview	Key message, target/objective/indicator	SEA topic(s)	Implications for the NDP and SEA
				<p>The Pre Submission Core Strategy includes a range of objectives, five of which directly relate to rural areas:</p> <ul style="list-style-type: none"> • To meet the housing needs of all sections of the community • To improve access to services in rural areas • To strengthen the economic viability of the villages and their rural hinterlands • To achieve sustainable communities and protect the environment • To conserve, promote, utilise and enjoy our natural, built, historic and cultural assets for the fullest benefit of the whole community 		<p>accessible to both local and neighbouring communities.</p> <p>¹Approximately 52 dwellings will need to be delivered within the settlement, though these targets are indicative and provide a starting point for work on the NDP.</p>

¹ Figures do not include extant planning permissions from 2011 onwards.

Plans and Programmes	Type of document	Date	Overview	Key message, target/objective/indicator	SEA topic(s)	Implications for the NDP and SEA
				<p>To achieve a thriving rural Herefordshire, the Core Strategy seeks to enhance the role the villages have traditionally played in as accessible, sustainable centres for their rural catchments.</p> <p>Seeks proportional growth of up to 18% in Sutton St Nicholas (Hereford HMA) over the plan period, subject to EiP outcome.</p>		

Plans and Programmes	Type of document	Date	Overview	Key message, target/objective/indicator	SEA topic(s)	Implications for the NDP and SEA
Herefordshire Local Transport Plan (LTP) 2013-2015	Corporate	2013	Sets out the Council's strategy for supporting economic growth, social inclusion and reducing the environmental impacts of transport, as well as the program of investment for the period April 2013 to April 2015.	The document includes three key objectives, one of which seeks to maintain access for rural residents and people without access to a car. Intrinsic to this is the retention of a 'core network' of bus services which focus on journeys between Hereford and the market towns, along with main transport corridors close to larger rural settlements. To this end, the strategy aims to increase the number of bus users by 1.3% (4,700 journeys) by 2015.	<ul style="list-style-type: none"> • Air • Climatic factors • Population 	The LTP does not explore current transport issues in the Sutton St Nicholas neighbourhood area, but any new development proposed through the NDP should seek to reduce the environmental impacts of transport.

Plans and Programmes	Type of document	Date	Overview	Key message, target/objective/indicator	SEA topic(s)	Implications for the NDP and SEA
Herefordshire Economic Development Strategy 2011-2016	Corporate	2011	Aims to increase the economic wealth of Herefordshire by setting out proposals and to support business growth up to 2016.	<p>The document outlines the path and direction to foster economic vitality within Herefordshire. Key objectives therefore include:</p> <ul style="list-style-type: none"> • Sustaining business survival and growth • Increasing wage levels, range and quality of jobs • Having a skilled population to meet future work needs • Developing the county's built infrastructure so enterprise can flourish. 	<ul style="list-style-type: none"> • Cultural heritage • Material assets • Population 	None of merit.

Plans and Programmes	Type of document	Date	Overview	Key message, target/objective/indicator	SEA topic(s)	Implications for the NDP and SEA
Herefordshire Employment Land Study	Evidence	2012	Includes employment land assessments for the plan period 2011-2031. The study includes Quantitative and Qualitative assessments of employment land, assessment of market demand and need, as well as providing forecasts and recommendations for future employment need over the plan period.	<p>This study covers existing employment sites in Hereford, the five market towns and their rural hinterlands.</p> <p>There are no employment land allocations within Sutton St Nicholas at present and so the study does not identify sites which are worthy of continued protection from alternative uses. Nor does it make any recommendations in respect of employment need within the neighbourhood area.</p>	<ul style="list-style-type: none"> Material assets Population 	None of merit; however it would be appropriate for the NDP to examine employment need locally and determine whether there is any scope for providing employment land and premises.

Plans and Programmes	Type of document	Date	Overview	Key message, target/objective/indicator	SEA topic(s)	Implications for the NDP and SEA
Herefordshire Strategic Housing Land Availability Assessment (SHLAA)	Evidence	2009	<p>The SHLAA aims to justify site allocations in plans by:</p> <ul style="list-style-type: none"> Identifying sites which are capable of delivering housing development Assessing sites for their housing potential; and Predicting when a site could be developed for housing. 	<p>In terms of Sutton itself, the SHLAA identifies that:</p> <ul style="list-style-type: none"> 300 additional dwellings could be provided on 6 sites. Of the 300 dwellings, 30 could be provided in 1-10 years, and 270 in 11-20 years. 	<ul style="list-style-type: none"> Air Biodiversity Climatic factors Cultural heritage Flora and fauna Population Soil Water 	<p>The SHLAA assesses the potential availability of land for housing in parts of Sutton St Nicholas.</p> <p>The Sutton St Nicholas NDP should be informed either by the findings of the SHLAA or a housing land assessment, undertaken in line with Guidance Note 21: Site assessment and allocation sites.</p>

Plans and Programmes	Type of document	Date	Overview	Key message, target/objective/indicator	SEA topic(s)	Implications for the NDP and SEA
Herefordshire Local Housing Market Assessment (LHMA)	Evidence	2013	Builds on an earlier Strategic Housing Market Assessment (SHMA) developed for Herefordshire and Shropshire. Its purpose is to inform the Local Plan's policies regarding housing need and demand (for market and affordable housing) within each of the 7 Housing Market Areas (HMAs) in Herefordshire between 2011 and 2031.	<p>The LHMA uses 7 HMAs as the geography for presenting data. Sutton St Nicholas falls within the Hereford HMA. Here, the study reveals that:</p> <ul style="list-style-type: none"> • Levels of owner occupation are higher on the western side of the city • 58% of households are unable to afford market housing. • There is an annual requirement for 417 affordable dwellings between 2012 and 2017. • Higher proportion of the HMA population is of working age (62%) compared to the county average of (61%). • The proportion of the population above retirement age is slightly below average (19% compared to 22% across Herefordshire) 	<ul style="list-style-type: none"> • Air • Biodiversity • Climatic factors • Cultural heritage • Flora and fauna • Population • Soil • Water 	<p>The LHMA provides an indication of housing needs and affordability within the Hereford HMA.</p> <p>It provides evidence that could be used to inform policies or market and affordable housing requirements in the NDP.</p>

Plans and Programmes	Type of document	Date	Overview	Key message, target/objective/indicator	SEA topic(s)	Implications for the NDP and SEA
Herefordshire Local Housing Requirements Study	Evidence	2012	Technical assessment of the housing market and potential future local housing requirements which supports planning policy regarding the amount of growth, housing tenure and housing type needed within Herefordshire up to 2031.	<p>The delivery of 5,300 homes in the rural areas would:</p> <ul style="list-style-type: none"> • Support growth in the rural population by 6% • Increase the number of households by 14.5% <p>Forecasts also predict that growth in the population of the rural areas is likely to be primarily through an increase in those aged over 75.</p> <p>Moderate growth is expected in the 30-44 and 60-74 age brackets.</p> <p>The Local Housing Requirements Study therefore anticipates continuing improvements in life expectancy; significant growth is expected of those in their 80s, with the existing population in their 40s and 50s moving into retirement.</p>	<ul style="list-style-type: none"> • Air • Biodiversity • Climatic factors • Cultural heritage • Flora and fauna • Material assets • Population • Soil • Water 	<p>This study provides an indication of housing requirements in the rural areas and the Hereford HMA.</p> <p>This evidence can be used to inform the content of the Sutton St Nicholas NDP.</p>

Plans and Programmes	Type of document	Date	Overview	Key message, target/objective/indicator	SEA topic(s)	Implications for the NDP and SEA
Herefordshire Rural Housing Background Report	Evidence	2013	Provides the justification for the proportional housing growth targets outlined in the Core Strategy	The villages within the neighbourhood area are listed among the settlements which are considered to be sustainable locations for growth of up to 18%, in accordance with the EiP outcome.	<ul style="list-style-type: none"> • Air • Biodiversity • Climatic factors • Cultural heritage • Flora and fauna • Material assets • Population • Soil • Water 	The Sutton St Nicholas NDP will need to be in general conformity with the provisions of Local Plan policies concerning the rural areas.

Plans and Programmes	Type of document	Date	Overview	Key message, target/objective/indicator	SEA topic(s)	Implications for the NDP and SEA
Herefordshire Draft Gypsies and Travellers Assessment	Evidence	2013	Assesses the accommodation needs of Gypsies and Travellers across Herefordshire.	<p>Key findings from the survey of Gypsy and Traveller households in 2012 found that:</p> <ul style="list-style-type: none"> • 31% of households surveyed have some sort of accommodation need • Of the 17 households with an accommodation need, 7 had a requirement for at least one additional pitch • 10 households had a requirement for bricks and mortar housing • There is an additional requirement for 7 pitches and 9 units of Registered Social Landlord accommodation within Herefordshire. 	<ul style="list-style-type: none"> • Air • Biodiversity • Climatic factors • Cultural heritage • Flora and fauna • Material assets • Population • Soil • Water 	The Burghill NDP should establish whether any of the need identified in this assessment falls within the neighbourhood area and seek appropriate pitches and provision.

Plans and Programmes	Type of document	Date	Overview	Key message, target/objective/indicator	SEA topic(s)	Implications for the NDP and SEA
Herefordshire Local Biodiversity Action Plan	Evidence	2007	Focuses conservation efforts on the areas within Herefordshire that will result in the greatest benefit for ecological networks, habitats and species.	Integrating biodiversity objectives with other environmental, social and economic needs can provide a sustainable living and working environment that benefits both people and nature.	<ul style="list-style-type: none"> Biodiversity 	The Sutton St Nicholas NDP can help to achieve the priorities set within the LBAP.
Building Biodiversity into the LDF	Evidence	2009	Provides the Council's Local Plan (Core Strategy) with evidence in respect of biodiversity and geodiversity, identifying both opportunities and constraints across Herefordshire.	This document provides useful information in respect of Hereford and the market towns only.	<ul style="list-style-type: none"> Air Biodiversity Climatic factors Cultural heritage Flora and fauna Material assets Population Soil Water 	There is a lack of information about rural areas which means it will be necessary to gather and assess existing biodiversity and geodiversity data, in order to ensure that the Sutton St Nicholas NDP can overcome any existing constraints and capitalise on opportunities to enhance habitats and their networks.

Plans and Programmes	Type of document	Date	Overview	Key message, target/objective/indicator	SEA topic(s)	Implications for the NDP and SEA
Urban Fringe Sensitivity Analysis	Evidence	2010	Technical Paper which supports the SHLAA by classifying the landscape sensitivity of the urban fringe on the edges of Hereford and the five market towns.	The document provides useful information in respect of Hereford and the market towns only.	<ul style="list-style-type: none"> • Cultural heritage • Flora and fauna 	None of merit.
Herefordshire Green Infrastructure Strategy	Evidence	2010	Develops a framework of natural and culturally important features and functions so that planning for a sustainable future is at the heart of planning within Herefordshire.	Establishes policies and principles for the protection and enhancement of those features and functions that contributes to the environment of Herefordshire across a range of scales.	<ul style="list-style-type: none"> • Air • Biodiversity • Climatic factors • Cultural heritage • Flora and fauna • Material assets • Population • Soil • Water 	The study provides evidence that could be taken into account when preparing policies for the Sutton St Nicholas NDP.

Plans and Programmes	Type of document	Date	Overview	Key message, target/objective/indicator	SEA topic(s)	Implications for the NDP and SEA
Renewable Energy Study	Evidence	2010	Assesses the energy demand within Herefordshire and the ability for the county to accommodate renewable and low carbon energy technologies.	<p>The total energy demand excluding transport for Herefordshire, at that point in time, was calculated as being:</p> <ul style="list-style-type: none"> • Electrical: 731 GWh/yr • Heat: 1,810 GWh/yr • Total: 2,541 GWh/yr <p>There is scope for all types of renewable energy production.</p>	<ul style="list-style-type: none"> • Air • Biodiversity • Climatic factors • Cultural heritage • Flora and fauna • Material assets • Population • Soil • Water 	The study provides evidence that could be taken into account when preparing policies for the Sutton St Nicholas NDP.

Plans and Programmes	Type of document	Date	Overview	Key message, target/objective/indicator	SEA topic(s)	Implications for the NDP and SEA
Herefordshire Playing Pitch Assessment	Evidence	2012	Produces a strategic framework, audit and assessment and needs analysis of outdoor sports pitches and facilities for Herefordshire. The document arises as a result of a recommendation in the Herefordshire and Worcestershire Sports Facilities Framework to develop local standards for playing fields and sports pitches throughout Herefordshire.	<p>The study updates components of the Herefordshire and Worcestershire Sports Facilities Framework 2010 such as updating population forecasts, setting local standards for synthetic turf pitches and grass playing fields within Herefordshire. It identifies any current gaps in provision, and looks forward to 2031 to assess what facilities are likely to be required by that date.</p> <p>In terms of Sutton St Nicholas itself, the study reveals that there is:</p> <ul style="list-style-type: none"> • 1.9 ha of playing pitch area (at the Primary School) <p>There are no hectares of playing pitch area with secured community access.</p>	<ul style="list-style-type: none"> • Biodiversity • Cultural heritage • Flora and fauna • Material assets • Population 	None of merit, but there may be local evidence of need for playing pitch provision.

Plans and Programmes	Type of document	Date	Overview	Key message, target/objective/indicator	SEA topic(s)	Implications for the NDP and SEA
Open Spaces Study	Evidence	2006	The 2006 space audit and assessment of need is a snap shot of the quality, quantity and distribution of open space across Herefordshire.	<p>The study reveals that within Central Herefordshire, to which Sutton St Nicholas is a part, there is:</p> <ul style="list-style-type: none"> • Extensive over provision of parks and gardens • Extensive over provision of natural and semi-natural green space • Under provision of amenity green space and outdoor sport • Average provision for children and young people. • Extensive under provision of outdoor sports facilities. <p>In terms of Sutton St Nicholas itself, no specific sites are identified.</p>	<ul style="list-style-type: none"> • Biodiversity • Climatic factors • Cultural heritage • Flora and fauna • Material assets • Population 	The open space audit and assessment does not give a specific indication of open space shortfalls and surpluses in Sutton St Nicholas. However, there may be a need to include a policy which encourages and facilitates the provision of outdoor recreational facilities.

Plans and Programmes	Type of document	Date	Overview	Key message, target/objective/indicator	SEA topic(s)	Implications for the NDP and SEA
Play Facilities Study	Evidence	2012	The Play Facilities Study 2012 updates the previous play facilities analysis under the Open Spaces Study 2006 and provides guidance and a framework for the development, delivery and continued sustainability of providing new and improved play facilities for children and young people in Herefordshire to 2031.	In terms of Sutton St Nicholas itself, the recreation ground is identified in the study as being good in terms of its usage, play value and access.	<ul style="list-style-type: none"> • Biodiversity • Climatic factors • Cultural heritage • Flora and fauna • Material assets • Population 	Recreation grounds is worthy of continued protection through the NDP.

Plans and Programmes	Type of document	Date	Overview	Key message, target/objective/indicator	SEA topic(s)	Implications for the NDP and SEA
Strategic Flood Risk Assessment (SFRA) and Water Cycle Study	Evidence	2009	<p>The Strategic Flood Risk Assessment (SFRA) provides a summary of flood risk in Herefordshire to inform the location of future development.</p> <p>The Water Cycle Study (WCS) examines how water resources and water supply infrastructure, wastewater treatment, water quality, sewerage and flood risk could constrain growth across Herefordshire.</p>	<p>The SFRA reveals that Sutton St Nicholas is within the five highest general flood hazard catchments due to the Lower Lugg.</p> <p>The neighbourhood area is situated in the Lugg River catchment.</p> <p>Sub-catchments within this zone record a standard percentage run off of 30-35%, which is potentially moderately unsuitable for infiltration source control.</p> <p>The area has a moderately slow flood response (Tp-time to peak) time at around 9-11 hours.</p> <p>The WCS identifies a significant number of water bodies in the River Lugg catchment that have poor ecological status.</p>	<ul style="list-style-type: none"> • Biodiversity • Climatic factors • Material assets • Population • Water 	<p>New development proposed through the Sutton St Nicholas NDP should be assessed against the capacity of local infrastructure.</p> <p>Up-to-date flood risk information should be gathered from the Environment Agency, in order to ensure that any flood risks are considered when preparing the Sutton St Nicholas NDP.</p>

Appendix A2 – Baseline information for Sutton St Nicholas

N.B. This is based on countywide baseline information with some additions relevant to SSN (in red). Where no locally specific data is available for current status, trends and targets, only countywide data is reported. Any gaps in data may be filled following additional research.

SA Objective ¹	SA Theme	Proposed indicator	Current status	Trends	Targets	Issues and constraints	Baseline (information) source
SEA Topic covered by objective: <i>Biodiversity, flora and fauna</i>							
13. Value, maintain, restore or expand county biodiversity.	Natural environment	Net change in condition of SSSIs across Herefordshire.	Current status of local SSSIs: <ul style="list-style-type: none"> River Lugg (Unfavourable recovering) 	Percentage of SSSI land in favourable condition. 2006: 22% 2007: 22% 2008: 22% 2010: 24% 2011: 27% Proportion of SSSI land that was in unfavourable condition but recovering increased between 2010 and 2012 going from 41% to 65%.	% of SSSI land in favourable condition (Increase) % of SSSI land in unfavourable condition but recovering (Increase) % of SSSI land in unfavourable condition and declining (Decrease)	Herefordshire's SSSIs are in extremely poor condition relative to England as whole, where 96.1% of all SSSI land was in favourable condition in April 2014. The proportion of SSSI in unfavourable condition but recovering is greater than England as a whole, where the figure currently stands at 58.6%.	-

¹ Derived from the Pre Submission Core Strategy Sustainability Appraisal Assessment (May 2014)

SA Objective ¹	SA Theme	Proposed indicator	Current status	Trends	Targets	Issues and constraints	Baseline (information) source
				Proportion in unfavourable and declining condition had also decreased from 4% to 1%.			
13. Value, maintain, restore or expand county biodiversity.	Natural environment	After use of mineral sites especially wildlife habitat creation.	<i>There is no countywide or locally specific data available at present.</i>	-	Percentage of opportunities taken.	Should be monitored through AMR following the adoption of the Core Strategy, in line with SA recommendations.	-

SA Objective ¹	SA Theme	Proposed indicator	Current status	Trends	Targets	Issues and constraints	Baseline (information) source
13. Value, maintain, restore or expand county biodiversity.	Natural environment	Phosphate levels within the River Wye SAC and adjoining tributaries that receive increased phosphates from proportional growth.	The River Lugg section of the SAC is currently exceeding the phosphate target (0.05 mg/l phosphate) set out for the site's favourable conditions tables and is considered by Natural England to be failing its conservation objectives.	The River Wye SAC was subject to a review of consents in 2010, as a number of sections of the river were found to have greater phosphate levels than those identified in Natural England's favourable condition tables.	The roll out of the Nutrient Management Plan will determine future targets.	New development within the area could exacerbate the present situation and lead to a situation which is entrenched and self-reinforcing.	Nutrient Management Plan (2014)

SA Objective ¹	SA Theme	Proposed indicator	Current status	Trends	Targets	Issues and constraints	Baseline (information) source
13. Value, maintain, restore or expand county biodiversity.	Natural environment	Changes to protected habitats and impacts of species within the Herefordshire Local Biodiversity Action Plan.	<p>The 2011-2013 AMR does not contain updated conservation data.</p> <p><i>There is no locally specific data available at present.</i></p>	<p>2010/11: 17 Habitat Action Plans and 14 Species Action Plans are currently in operation across Herefordshire.</p> <p>There are no formal records of any unacceptable adverse impacts on habitats or protected species.</p> <p>Originally 156 Priority Species were identified for inclusion in Herefordshire's LBAP.</p> <p>Similarly Herefordshire's LBAP covered 23 habitats with Action Plans.</p>	<p>To protect or enhance the habitats of species identified.</p> <p>Zero net loss of habitats.</p>	Herefordshire Biological Records Centre (HBRC) holds limited data on some individual sites.	-

This document is copyright of Herefordshire Council. Please contact the Neighbourhood Planning team if you wish to reuse it in whole or part.

SA Objective ¹	SA Theme	Proposed indicator	Current status	Trends	Targets	Issues and constraints	Baseline (information) source
13. Value, maintain, restore or expand county biodiversity.	Natural environment	Changes in the areas of designated nature conservation sites as a consequence of planning permission.	<p>Sutton St Nicholas has:</p> <p>SSSI: 1 SWS: 4 RIGS: 1</p> <p>The River Lugg SAC runs through the parish, but there are no SINC.</p>	As of 2012, there had been no change in the areas of designated nature conservation sites as a consequence of the planning permissions granted.	To capitalise on opportunities to enhance the areas of value to nature conservation.	Should be monitored through AMR following the adoption of the Core Strategy, in line with SA recommendations.	NDP SEA/HRA Screening Notification Report (January 2014)
13. Value, maintain, restore or expand county biodiversity.	Natural environment	Proportion of local sites where positive conservation management has or is being implemented.	<p>The neighbourhood area comprises the following types of landscapes:</p> <ul style="list-style-type: none"> Principal settled farmlands. 	-	No specific targets identified.	Should be monitored through AMR following the adoption of the Core Strategy, in line with SA recommendations.	Herefordshire Landscape Character Assessment (2004; updated 2009).

SA Objective ¹	SA Theme	Proposed indicator	Current status	Trends	Targets	Issues and constraints	Baseline (information) source
SEA Topic covered by objectives: <i>Material assets</i>							
14. Use natural resources and energy more efficiently.	Resource consumption and climate change	Maintaining Herefordshire Council's County Site and Monuments Register.	Countywide data would be too large to incorporate into this template. Whilst there is no locally specific data available at present, there are numerous archaeological and historic sites in Sutton St Nicholas according to the latest version of the register.	-	No specific targets identified, but need to ensure that the register is kept up to date.	Should be monitored through AMR following the adoption of the Core Strategy, in line with SA recommendations.	Herefordshire Environmental Records Register (search June 2014).

SA Objective ¹	SA Theme	Proposed indicator	Current status	Trends	Targets	Issues and constraints	Baseline (information) source
14. Use natural resources and energy more efficiently.	Resource consumption and climate change	Monitoring changes to historic landscapes.	<i>Rapid Townscape Assessments (2010) were only undertaken for Hereford, Ledbury and Ross.</i> <i>Urban Fringe Sensitivity Analysis (2010) only considers sites on the urban fringe of Hereford and the five market towns.</i>	-	No specific targets identified.	Should be monitored through AMR following the adoption of the Core Strategy, in line with SA recommendations.	-
SEA Topic covered by objective: <i>Population, Biodiversity, Flora and Fauna</i>							
15. Value, protect, enhance or restore the landscape quality of Herefordshire, including its rural areas and open spaces.	Natural environment	Number of developments meeting and surpassing national design standards.	<i>There is no countywide or locally specific data available at present.</i>	-	No specific targets identified.	Should be monitored through AMR following the adoption of the Core Strategy, in line with SA recommendations.	-

SA Objective ¹	SA Theme	Proposed indicator	Current status	Trends	Targets	Issues and constraints	Baseline (information) source
15. Value, protect, enhance or restore the landscape quality of Herefordshire, including its rural areas and open spaces.	Natural environment	The need for, frequency and outcomes of planning enforcement investigations/ planning appeals concerning the aspects of local loss of locally important buildings within a conservation area.	Countywide data would be too large to incorporate into this template. There are no outstanding enforcement actions or appeals concerning locally important buildings within the Sutton conservation area at present.	No historic records of any planning enforcement action or appeals concerning locally important buildings within the conservation area.	To maintain or enhance current status.	Current status must be verified by Dvt Mgt and Enforcement Officers.	Council Dvt Mgt records (searched June 2014)

SA Objective ¹	SA Theme	Proposed indicator	Current status	Trends	Targets	Issues and constraints	Baseline (information) source
SEA Topic covered by objective: <i>Climatic Factors</i>							
16. Reduce Herefordshire's vulnerability to the impacts of climate change as well as its contribution to the problem.	Resource consumption and climate change.	Transport patronage by mode.	<p>% of Herefordshire residents who travel to work by:</p> <p>Car: 70.1% Foot: 14.7% Bicycle: 4.3% Bus: 2% Train: 0.8% Motorbike: 0.8% Taxi: 0.3% Other: 7%</p> <p><i>There is no locally specific data available at present.</i></p>	The number of people cycling or travelling by bus as the main form transport to get to work declined between 2001 and 2011 – across England and Wales there was little change in either. Walking or driving a car or van on the other hand increased.	To increase the take up of less polluting forms of transport.	There are a lack of transport options for many rural communities and therefore high car ownership and dependency – the last decade has seen a 15 per cent increase in household car ownership, although this is not reflected in traffic flows of recent years with volumes in Hereford City and wider county having decreased. The proportion of people working from home increased over the decade from 15 per cent in 2001 to 17 per cent in 2011.	2011 Census

SA Objective ¹	SA Theme	Proposed indicator	Current status	Trends	Targets	Issues and constraints	Baseline (information) source
16. Reduce Herefordshire's vulnerability to the impacts of climate change as well as its contribution to the problem.	Resource consumption and climate change.	Number of decentralised energy schemes granted permission.	<i>There is no countywide or locally specific data available at present.</i>	-	To contribute towards the national target.	Should be monitored through AMR following the adoption of the Core Strategy, in line with SA recommendations.	-

SA Objective ¹	SA Theme	Proposed indicator	Current status	Trends	Targets	Issues and constraints	Baseline (information) source
16. Reduce Herefordshire's vulnerability to the impacts of climate change as well as its contribution to the problem.	Resource consumption and climate	Total CO2 emissions per capita	<p>Latest figure dates back to 2010: 1.61 million tonnes (mtCO₂)</p> <p><i>There is no locally specific data available at present.</i></p>	<p>Between 2005 and 2010 Herefordshire's total and per capita carbon emission reduced by 7% and 8% respectively; while UK's total and per capita carbon emission reduced by 8% and 12% respectively within the same period. This trend hides an increase in emissions between 2009 and 2010 when total emissions in the county increased by 5% the same as across the UK (+5%).</p>	To reduce the overall carbon emissions.	CO ₂ emissions produced are decreasing.	Understanding Herefordshire: An integrated needs assessment (June 2013).

SA Objective ¹	SA Theme	Proposed indicator	Current status	Trends	Targets	Issues and constraints	Baseline (information) source
SEA Topic covered by objective: <i>Water</i>							
17. Reduce the risk of flooding and the resulting detriment to public wellbeing, the economy and the environment.	Natural environment	Number of planning permissions granted contrary to the advice of the Environment Agency on flood defence grounds.	The 2011-2013 AMR does not contain updated conservation data. <i>There is no locally specific data available at present.</i>	2010/11: None There have been no approvals contrary to EA advice since reporting began in 2004.	To have no applications permitted contrary to EA advice.	Should be monitored through AMR following the adoption of the Core Strategy, in line with SA recommendations.	-
SEA Topic covered by objective: <i>Water, air, soil, material assets</i>							
18. Minimise local and global pollution and protect or enhance environmental resources.	Natural environment	Agricultural land usage by quality	<i>There is no countywide data available at present.</i> 2011: Large tracts of land in and around Sutton St Nicholas were listed Grades 2 (Very Good) and 3 (Good to Moderate) for their agricultural quality, though data requires an update.	-	Measure the number of hectares of best and most versatile soil lost through development.	Should be monitored through AMR following the adoption of the Core Strategy, in line with SA recommendations.	West Midland ALC Map (Natural England 2011).

SA Objective ¹	SA Theme	Proposed indicator	Current status	Trends	Targets	Issues and constraints	Baseline (information) source
18. Minimise local and global pollution and protect or enhance environmental resources.	Natural environment	Percentage of river length assessed as good or very good chemical quality and ecological quality as required by the Water Framework Directive.	Latest figure dates back to 2005: 84% <i>There is no locally specific data available at present.</i>	Figure steadily improved before going into decline: Herefordshire 1999 85.9%, 2000 89.5%, 2001 92.2%, 2002 91.8%	To ensure that rivers meet their conservation objectives and do not fall below the required standard of quality.	None identified.	The State of Herefordshire Report (2007) Water Framework Directive (2000)
SEA Topic covered by objective: <i>Soil</i>							
19. Ensure integrated, efficient and balanced land use.	Built environment	Percentage of all new development completed on previously developed land.	2011/13: 57% <i>There is no locally specific data available at present.</i>	2010/11: 67% Completions on PDL had risen to 71% by 2005.	To increase the number of homes built on PDL in line with the provisions of national planning policy.	The number of brownfield completions has fallen slightly in recent years, though this is probably the offshoot of tough market conditions.	Herefordshire Council AMR (2011/13)
19. Ensure integrated, efficient and balanced land use.	Built environment	Housing densities in urban and rural areas	<i>There is no countywide or locally specific data available at present.</i>	-	No specific targets identified.	Should be monitored through AMR following the adoption of the Core Strategy, in line with SA recommendations.	-

SA Objective ¹	SA Theme	Proposed indicator	Current status	Trends	Targets	Issues and constraints	Baseline (information) source
19. Ensure integrated, efficient and balanced land use.	Built environment	Level of development in urban areas compared to rural.	<i>There is no countywide or locally specific data available at present.</i>	-	No specific targets identified.	Should be monitored through AMR following the adoption of the Core Strategy, in line with SA recommendations.	-
SEA Topic covered by objective: <i>Cultural heritage</i>							
20. Value, protect or enhance the character and built quality of settlements and neighbourhoods and the county's heritage assets, historic environment and cultural heritage.	Built environment	Number and percentage of listed buildings and Scheduled Ancient Monuments on Buildings at Risk Register (English Heritage).	<p>The 2011-2013 AMR does not contain updated conservation data.</p> <p>There are numerous listed buildings within the parish and 4 SAMs, none of which are currently recorded in the Buildings at Risk Register.</p>	In 2011, there were 58 heritage assets in Herefordshire that were considered to be at high risk and included in the Heritage at Risk Register.	To maintain or enhance current status.	None of Sutton's listed buildings or SAMs are considered to be at risk at present.	Buildings at Risk Register (English Heritage; searched June 2014)

SA Objective ¹	SA Theme	Proposed indicator	Current status	Trends	Targets	Issues and constraints	Baseline (information) source
20. Value, protect or enhance the character and built quality of settlements and neighbourhoods and the county's heritage assets, historic environment and cultural heritage.	Built environment	The need for, frequency and outcomes of planning enforcement investigations/ planning appeals concerning the aspects of local loss of heritage assets, locally important buildings across the Parish and particularly within a conservation area.	Countywide data would be too large to incorporate into this template. There are no outstanding enforcement actions or appeals concerning locally important buildings within the Sutton conservation area at present.	No historic records of any planning enforcement action or appeals concerning locally important buildings within the conservation areas.	To maintain or enhance current status.	Current status must be verified by Dvt Mgt and Enforcement Officers.	Council Dvt Mgt records (searched June 2014)

Appendix A3 – Environmental issues identified from the Sutton St Nicholas baseline

These environmental issues are the same as most of those identified for the Herefordshire Core Strategy¹

SEA Topic		Environmental issue	SA objectives
1	Air	High reliance upon the private car causing high levels of air pollution and in Hereford in particular	Objective 16
		Need to reduce carbon emissions by encouraging less polluting forms of transport.	
2	Biodiversity	Habitats and species of national, regional and local importance are under pressure from the adaptation and diversification of farming and forestry employment.	Objectives 13 & 15
		Minimise loss of biodiversity and expand opportunities for wildlife everywhere.	
3	Climatic factors	Reduce greenhouse gas emissions through planning, design and build.	Objective 16
4	Cultural heritage	Sutton St Nicholas has numerous Scheduled Ancient Monuments and listed buildings, all of which require ongoing protection and many in need of high levels of maintenance.	Objective 20
5	Flora and fauna	Conserve and enhance the character and quality of historic landscapes, including all types of natural flora and fauna.	Objective 15
6	Material assets	How the countryside can continue to be managed in an economically, socially and environmentally beneficial way in the face of continuing pressures on traditional farming.	Objectives 14 & 18
7	Population	Minimise energy waste through good designs, which help to reduce energy consumption and maximise efficiency.	Objective 15
		Need to avoid enforcement investigations/action concerning locally important buildings and those within conservation areas in particular.	
8	Soil	Promoting development of previously developed land and buildings as opposed to greenfield sites or agricultural land of the highest quality.	Objectives 18 & 19
9	Water	Issues relating to availability of resources, foul drainage, pollution, and abstraction in a county which supports water dependent biodiversity of international and national importance, given the predicted climate change consequences for water availability and demanding projections for new housing.	Objectives 17 & 18

¹ Derived from the Pre Submission Core Strategy Sustainability Appraisal Assessment (May 2014) and LDF General Scoping Report (June 2007)

		Steady decline in the chemical quality of rivers over the last 10 years.	
--	--	--	--

Appendix A4 – SEA framework (objectives, indicators and targets)

SEA Topic(s)	SEA Objective(s)	SA Objective(s)	Sub-objectives/Appraisal Questions	Indicators	Targets
Air	<ul style="list-style-type: none"> To improve air quality. To reduce the effect of traffic on the environment 	<ul style="list-style-type: none"> Minimise local and global pollution and protect or enhance environmental resources. 	<ul style="list-style-type: none"> Minimise water, air, soil, groundwater, noise and light pollution from current activities and the potential for such pollution. Protect or enhance the quality of watercourses. Provide opportunities to improve soil quality or reduce contaminated land. 	Transport patronage by mode.	To increase the take up of less polluting forms of travel.
Biodiversity, Flora and fauna	<ul style="list-style-type: none"> To maintain or enhance nature conservation (biodiversity, flora and fauna) 	<ul style="list-style-type: none"> Value, maintain, restore or expand county biodiversity. Value, protect, enhance or restore the landscape quality of Herefordshire, including its rural areas and open spaces. 	<ul style="list-style-type: none"> Protect or enhance habitats of international, national, regional or local importance. Protect international, national, regional or locally important terrestrial or aquatic species. Maintain wildlife corridors and minimise fragmentation of ecological areas and green spaces. Manage access to sites in a sustainable way that protects or enhances their nature conservation value. 	Net change in condition of SSSIs across Herefordshire.	% of SSSI land in favourable condition (Increase) % of SSSI land in unfavourable condition but recovering (Increase) % of SSSI land in unfavourable condition and declining (Decrease)
				After use of mineral sites especially wildlife habitat creation.	No specific targets identified.

SEA Topic(s)	SEA Objective(s)	SA Objective(s)	Sub-objectives/Appraisal Questions	Indicators	Targets
			<ul style="list-style-type: none"> • Create new appropriate habitats. • Value, enhance and protect natural environmental assets including AONB's, historic landscapes, open spaces, parks and gardens and their settings • Encourage local stewardship of local environments, for example by promoting best practices in agricultural management. • Ensure that environmental impacts caused by mineral operations and the transport of minerals are minimised. • Promote the use of rural areas and open space by all, encourage easy non-car based access, and accommodate the needs of disabled users. 	Phosphate levels within the River Wye SAC and adjoining tributaries that receive increased phosphates from proportional growth.	The roll out of the Nutrient Management Plan will determine future targets
				Changes to protected habitats and impacts of species within the Herefordshire Local Biodiversity Action Plan.	To ensure that the amount of land covered by traditional orchards does not decline further.
				Changes in the areas of designated nature conservation sites as a consequence of planning permission.	To capitalise on opportunities to enhance the areas of value to nature conservation.
				Proportion of local sites where positive conservation management has or is being implemented.	The number of local sites under positive conservation management (Increase).

SEA Topic(s)	SEA Objective(s)	SA Objective(s)	Sub-objectives/Appraisal Questions	Indicators	Targets
Climatic factors	<ul style="list-style-type: none"> To reduce contributions to climate change To reduce vulnerability to climate change 	<ul style="list-style-type: none"> Reduce Herefordshire's vulnerability to the impacts of climate change as well as its contribution to the problem. 	<ul style="list-style-type: none"> Reduce the county's contribution to climate change by reducing greenhouse gas emissions from transport, domestic, commercial and industrial sources. Increase the proportion of energy generated from renewable and low carbon sources including by micro-generation, Combined Heat and Power (CHP), district heating and in transportation. 	Number of decentralised energy schemes granted permission.	To contribute towards the national target.
				Total CO2 emissions per capita.	To reduce the overall carbon emissions.

SEA Topic(s)	SEA Objective(s)	SA Objective(s)	Sub-objectives/Appraisal Questions	Indicators	Targets
Cultural heritage	<ul style="list-style-type: none"> To conserve or enhance the historic environment, heritage assets and cultural heritage. 	<ul style="list-style-type: none"> Value, protect or enhance the character and built quality of settlements and neighbourhoods and the county's heritage assets, historic environment and cultural heritage. 	<ul style="list-style-type: none"> Preserve, protect or enhance Conservation Areas, Listed Buildings, archaeological remains, and other features and areas of historical heritage and cultural value e.g. locally listed buildings. Prevent development which is inappropriate in scale, form or design to its setting or to its function or local area. Encourage development that creates and sustains well-designed, high quality built environments that incorporate green space, encourage biodiversity and promote local distinctiveness and sense of place. Encourage cleanliness and/or improve the general appearance of the area. 	Number and percentage of listed buildings and Scheduled Ancient Monuments on Buildings at Risk Register (English Heritage).	To maintain or enhance current status in Sutton St Nicholas.
				The need for, frequency and outcomes of planning enforcement investigations/ planning appeals concerning the aspects of local loss of heritage assets, locally important buildings across the Parish and particularly within a conservation area.	To maintain or enhance current status in Sutton St Nicholas.

SEA Topic(s)	SEA Objective(s)	SA Objective(s)	Sub-objectives/Appraisal Questions	Indicators	Targets
Material assets	<ul style="list-style-type: none"> To conserve natural and man-made resources. To improve the quality of surroundings To maintain or enhance the quality of landscapes and townscapes 	<ul style="list-style-type: none"> Use natural resources and energy more efficiently. Minimise local and global pollution and protect or enhance environmental resources. 	<ul style="list-style-type: none"> Maximise energy efficiency and minimise the consumption of non-renewable energy i.e. from fossil fuels. Minimise the consumption of water, land, soil, minerals, aggregates and other raw materials by all? E.g. through integrated transport, sustainable resource-efficient design, local sourcing of food, goods, materials. Encourage the re-use/enhancement (to high standards of sustainable resource-efficient design) of existing buildings and minimise the need for new build. Encourage the use of clean technologies and water minimisation techniques. 	Maintaining Herefordshire Council's County Site and Monuments Register.	No specific targets identified, but need to ensure that the register is kept up to date.
				Monitoring changes to historic landscapes.	No specific targets identified.
				Agricultural land usage by quality	Measure the number of hectares of best and most versatile soil lost through development.

SEA Topic(s)	SEA Objective(s)	SA Objective(s)	Sub-objectives/Appraisal Questions	Indicators	Targets
Population	<ul style="list-style-type: none"> To improve the health and well-being of the population. 	<ul style="list-style-type: none"> Value, protect, enhance or restore the landscape quality of Herefordshire, including its rural areas and open spaces. 	<ul style="list-style-type: none"> Value, enhance and protect natural environmental assets including AONB's, historic landscapes, open spaces, parks and gardens and their settings. Encourage local stewardship of local environments, for example by promoting best practices in agricultural management. Ensure that environmental impacts caused by mineral operations and the transport of minerals are minimised. Promote the use of rural areas and open space by all, encourage easy non-car based access, and accommodate the needs of disabled users. 	Number of developments meeting and surpassing national design	No specific targets identified.
				The need for, frequency and outcomes of planning enforcement investigations/ planning appeals concerning the aspects of local loss of locally important buildings within a conservation area.	To maintain or enhance current status in Sutton St Nicholas.

SEA Topic(s)	SEA Objective(s)	SA Objective(s)	Sub-objectives/Appraisal Questions	Indicators	Targets
Soil	<ul style="list-style-type: none"> To conserve soil resources and quality 	<ul style="list-style-type: none"> Minimise local and global pollution and protect or enhance environmental resources. Ensure integrated, efficient and balanced land use. 	<ul style="list-style-type: none"> Minimise water, air, soil, groundwater, noise and light pollution from current activities and the potential for such pollution. Provide opportunities to improve soil quality or reduce contaminated land. Ensure new developments are in appropriate locations, optimising the use of previously developed land and buildings, primarily focussed on the urban areas and are accessible by walking, cycling or sustainable transport and/or will increase the share of these transport modes, thereby reducing the need to travel. 	Percentage of all new development completed on previously developed land.	To increase the number of homes built on PDL in line with the provisions of national planning policy.
				Housing densities in urban and rural areas.	No specific targets identified.

SEA Topic(s)	SEA Objective(s)	SA Objective(s)	Sub-objectives/Appraisal Questions	Indicators	Targets
Water	<ul style="list-style-type: none"> To improve water quality To provide for sustainable sources of water supply To reduce, avoid and manage flood risk 	<ul style="list-style-type: none"> Reduce the risk of flooding and the resulting detriment to public well-being, the economy and the environment. Minimise local and global pollution and protect or enhance environmental resources. 	<ul style="list-style-type: none"> Reduce flood risk both presently and taking into account climate change. Prevent inappropriate development of the floodplain, and include flood protection systems. Include sustainable urban drainage systems where appropriate. Minimise water, air, soil, groundwater, noise and light pollution from current activities and the potential for such pollution. Protect or enhance the quality of watercourses. 	Number of planning permissions granted contrary to the advice of the Environment Agency on flood defence grounds.	To have no applications permitted contrary to EA advice.
				Percentage of river length assessed as good or very good chemical quality and ecological quality.	To ensure that rivers meet their conservation objectives and do not fall below the required standard of quality, as set out in the Water Framework Directive.

Appendix 3

Date: 08 August 2014
Our ref: 127587
Your ref: None



James Latham
Technical Support Officer
Neighbourhood Planning, Strategic Planning & Conservation teams
Herefordshire Council

Customer Services
Hornbeam House
Crewe Business Park
Electra Way
Crewe
Cheshire
CW1 6GJ

BY EMAIL ONLY

neighbourhoodplanning@herefordshire.gov.uk

BY EMAIL ONLY

T 0300 060 3900

Dear Mr Latham

Sutton St Nicholas Strategic Environmental Assessment Scoping and Habitat Regulations Assessment Screening

Thank you for your consultation on the above dated 14 July 2014 which was received by Natural England on the same date.

Natural England is a non-departmental public body. Our statutory purpose is to ensure that the natural environment is conserved, enhanced, and managed for the benefit of present and future generations, thereby contributing to sustainable development.

Where Neighbourhood Plans could have significant environmental effects, they may require a Strategic Environmental Assessment (SEA) under the Environment Assessment of Plans and Programmes Regulations 2004.

Further guidance on deciding whether the proposals are likely to have significant environmental effects and the requirements for consulting Natural England on SEA are set out in the National Planning Practice Guidance at:
<http://planningguidance.planningportal.gov.uk/blog/guidance/strategic-environmental-assessment-and-sustainability-appraisal/does-a-neighbourhood-plan-require-a-sustainability-appraisal/>

We welcome the production of this SEA Scoping report. The following comments are intended to further improve the SEA and its usefulness in assessing the Neighbourhood Plan.

Appendix A1 – Plans, policies and programmes

In addition to the plans, policies and programmes listed, we suggest that the following are relevant and should be added:

- The EC Conservation of Habitats and Species Regulations 2010
- The EC Water Framework Directive 2000
- The Wildlife and Countryside Act 1981
- The Countryside and Rights of Way Act 2000
- The Natural Environment and Rural Communities Act 2006
- Herefordshire Local Biodiversity Action Plan

Appendix A2 – Baseline information for Bartestree and Lugwardine Group

Biodiversity, flora and fauna

Against the proposed indicator “*Net change in condition of SSSIs across Herefordshire*”, under “*current status*” the table states that there is no data available. Natural England is able to provide up to date information on the condition of SSSI’s. Please contact us for this information as and when required.

Under the proposed indicator “*Changes to protected habitats and impacts of species within the Herefordshire Local Biodiversity Action Plan*”, no baseline information source has been identified. Maps of priority habitats and species are available on *Magic*, Defra’s GIS package for environmental assets (www.natureonthemap.naturalengland.org.uk).

Baseline information on the landscape and open spaces needs to be included under SA objective 15: “*Value, protect, enhance and restore the landscape quality of Herefordshire, including its rural areas and open spaces*”. Reference could be made to the county Landscape Character Assessment and Landscape Characterisation studies including Historic Landscape Characterisation if this has been carried out.

Water, air, soil and material assets

This section (or suitable alternative) should include information on geodiversity. The baseline and assessment should make reference to geological conservation and the need to conserve, interpret and manage geological sites and features, both in the wider environment and in relation to designated features. The Herefordshire & Worcestershire Earth Heritage Trust may be of assistance.

The proposed indicator “*Agricultural land usage by quality*” has no countywide data identified. Agricultural land classification maps are available via *Magic* (website above). We suggest as an indicator that the Local Planning Authority could monitor and report on the number of hectares of best and most versatile agricultural land (grades 3a and higher) lost to development.

Soil

We note that the best and most versatile agricultural land has not been considered. We suggest including an indicator to monitor the hectares of the best and most versatile agricultural land lost to development.

Appendix A3 – Environmental issues identified from Bartestree and Lugwardine Group baseline

We note that landscape, soil and geodiversity are not covered. These issues should be added to the SEA baseline information, so that significant impacts on these aspects of the environment can be given appropriate consideration.

Under the SEA topic “Biodiversity”, we suggest that development should be noted as an additional pressure.

Template A4: SEA Framework

Under the SEA topic “Air”, not all of the sub-objectives/indicators are relevant, i.e. water quality, soil and contaminated land are covered.

Under the SEA topic “*Biodiversity, flora and fauna*” and the SEA objective “*Value, protect, enhance and restore the landscape quality of Herefordshire, including its rural areas and open spaces*”, landscape quality and open spaces have not been covered in the indicators. Relevant indicators should be added, or will not be possible to monitor the impacts of the plan on the landscape and open space. Reference could be made to the county Landscape Character Assessment and Landscape Characterisation studies including Historic Landscape Characterisation if this has been carried out. Applications resulting in the loss of open space could be monitored.

We would also welcome the inclusion of an indicator/target around the impact/benefit to ecological networks (NPPF paragraph 109, 113 and 117). We note that no targets have been identified against the indicator “*After use of mineral sites especially wildlife habitat creation*”; we suggest that perhaps the percentage of opportunities taken could be monitored.

Under SEA topic “*material assets*”, there are no targets identified against the indicator “*monitoring changes to the historic landscape*”. We suggest that the LPA could monitor the number of applications permitted despite a significant impact on the landscape having been identified.

Under the SEA topic “*Soils*”, we note that the best and most versatile agricultural land has not been considered. We suggest including an indicator to monitor the hectares of the best and most versatile agricultural land lost to development.

Under the SEA topic “*water*”, the indicator “*Percentage of river length assessed as good or very good chemical quality*” should also refer to ecological quality. Reference could be made to the Water Framework Directive.

Habitats Regulations Assessment Screening

We note the recommendation that a full Habitat Regulations Assessment Screening is undertaken due to proximity to the River Wye Special Area of Conservation (SAC).

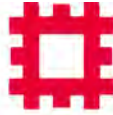
We would be happy to comment further should the need arise but if in the meantime you have any queries please do not hesitate to contact us.

For any queries relating to the specific advice in this letter only please contact Hayley Fleming on 0300 060 1594. For any new consultations, or to provide further information on this consultation please send your correspondences to consultations@naturalengland.org.uk.

We really value your feedback to help us improve the service we offer. We have attached a feedback form to this letter and welcome any comments you might have about our service.

Yours sincerely

Hayley Fleming
Lead adviser – Planning
South Mercia Area Team
(Gloucestershire, Herefordshire, Worcestershire, Warwickshire, Coventry and Solihull)



ENGLISH HERITAGE

WEST MIDLANDS REGION

Neighbourhood Planning Team
Herefordshire Council
Planning Services
PO Box 230
Blueschool House
Blueschool Street
Hereford
HR1 2ZB.

Our ref:
Your ref:

Telephone 0121 625 6887
Fax 0121 625 6820

15 August 2014

Dear Sir or Madam

CONSULTATION ON SEA SCOPING REPORTS FOR NEIGHBOURHOOD PLANS IN:

(Bartestree & Lugwardine; Breinton; Brimfield little Hereford; Callow & Haywood; Dorstone; Eardisley; Lyonshall; Peterchurch; Staunton on Wye; Stretton Sugwas; Sutton St. Nicholas; Wellington; Whitbourne; Withington).

Thank you for your e-mails and the invitation to comment on the SEA Scoping Reports for the Neighbourhood Plans listed above. We have no substantive objection to the contents of the documents but have the following comments and recommendations which we urge you to consider before finalizing the reports.

Firstly, as regards terminology there appears to be very little reference made to “heritage assets” generally which leaves a perhaps undue emphasis upon designated assets such as conservation areas, listed buildings and SAMs. This is at variance with the Government’s objective, expressed as a core planning principle in the National Planning Policy Framework (NPPF) to “conserve heritage assets in a manner appropriate to their significance, so that they can be enjoyed for their contribution to the quality of life of this and future generations”. No distinction is made here between designated and undesignated assets. The accompanying Planning Practice Guidance also states (inter alia) that local planning authorities should identify specific opportunities within their area for the conservation and enhancement of heritage assets and equally this applies to all such assets.

We strongly encourage you, therefore, to weave the term “heritage assets” into the SEA templates wherever reference is made to the cultural heritage. It is difficult to be more specific as there is a degree of variation in the template content across the range of

Neighbourhood Plans covered, presumably due to differing authorships. Nevertheless in English Heritage's view some templates are more successful at reflecting historic environment concerns than others. In this regard we would particularly endorse the approach taken in relation to Dorstone, Breinton, Stretton Sugwas, Peterchurch, Brimfield and Whitbourne and suggest similar wording is applied to the other NP templates. That said, however, we would also suggest slight rewording and additions to those preferred templates.

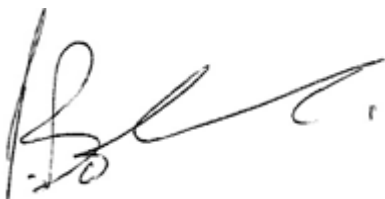
Taking the Dorstone "Task 4" template (page 3 of 7) and the Cultural heritage SA Objective as an example, we would suggest "Value protect and enhance the character and built quality of settlements and neighbourhoods and the county's *heritage assets*, historic environment and cultural heritage". Similarly under Sub-objectives consider "Preserve, protect and enhance *heritage assets*, including Conservation Areas....." Under Indicators please consider ".....aspects of local loss of *heritage assets and* locally important buildings across the Parish *and particularly* within a conservation area. Under Targets we would suggest "To *wherever possible improve upon or otherwise* maintain current status...". This reflects (inter alia) the repeated statement for each Parish under Environmental Issues that many listed buildings are in need of high levels of maintenance and there may eg be the potential for grant schemes. In the same vein, where applicable (eg Lyonshall) it should we believe be a target to "*Promote opportunities to achieve the removal of heritage assets from the At Risk Register*".

A further Indicator and Target that features in some templates (eg Staunton on Wye, Brimfield and Withington and we suggest should apply to all is "*Maintaining Herefordshire Council's Sites and Monuments Register*" with a target of "*Ensure that the Herefordshire Council Sites and Monuments Register is kept up to date*". It should in fact be possible to use the Register as an effective monitoring tool in relation to the changing status of heritage assets and the effectiveness of planning tools in achieving their conservation and enhancement. We would strongly suggest that you hold detailed discussions in this respect with your own Council historic environment specialists in order to achieve an effective indicator for the wider historic environment beyond designated heritage assets.

A final minor comment is that there are apparently stray references to "Huntingdon and Broomy Hill" that appear in the templates for Breinton and Stretton Sugwas and presumably these need editing out.

I hope you find this advice helpful.

Yours faithfully

A handwritten signature in black ink, appearing to read 'P. Boland', with a stylized flourish at the end.

Pete Boland
Historic Places Adviser
E-mail: peter.boland@english-heritage.org.uk

Appendix 4

Template B1: Sutton NDP Objectives review against SEA objectives

Parish Council Name: Sutton Parish

Neighbourhood Development Plan Name: Sutton NDP

Date completed: 14/10/15

Objectives verses SEA Objectives (SMART and Compatibility Test)				
SEA Stage B1	Key:	SMART criteria:		The following matrix appraises the emerging Sutton St. Nicholas NDP Objectives in terms of their SMART criteria and their compatibility with the SEA Objectives. These have been developed from Government guidance on SEA and from the local evidence base gathered for identifying the NDP issues.
+ =/++	Compatible/ Very comp	S – Specific:	NDP objectives should specify what is intended to be done in detail and should not be open to a wide range of misinterpretations	
- =	Possible conflict	M – Measurable:	It should be possible to monitor NDP objectives in a quantifiable way, by the use of indicators. Indicators should be measurable with limited resource implications.	
0 =	Neutral	A – Attainable/achievable:	NDP objectives should be achievable and deliverable, related to the scale of growth proposed	
X =	No relationship between objectives	R – Realistic:	NDP objectives should relate to the overall vision of the plan. Likewise, chosen indicators should relate to objectives and their outcomes.	
? =	Unclear, more information needed	T – Time-Bound:	Objectives should be specific to the NDP period or another specified time-frame. Objectives should be associated with a target and indicators should specify when the target should be achieved.	

SEA Objectives

- 1- To maintain and enhance nature conservation (biodiversity, flora and fauna)
- 2- To maintain and enhance the quality of landscapes and townscapes
- 3- To improve quality of surroundings
- 4- To conserve and where appropriate enhance the historic environment and culture heritage
- 5- To improve air quality
- 6- To reduce the effect of traffic on the environment
- 7- To reduce contributions to climate change
- 8- To reduce vulnerability to climate change
- 9- To improve water quality
- 10- To provide for sustainable sources of water supply
- 11- To avoid, reduce and manage flood risk
- 12- To conserve soil resources and quality
- 13- To minimise the production of waste
- 14- To improve health of the population
- 15- To reduce crime and nuisance
- 16- To conserve natural and manmade resources

NDP objectives	SEA Objectives																Conclusions	Recommendations	SMART Test of NDP objective	After SMART objectives
	1	2	3	4	5	6	7	8	9	10	11	12	13	14	15	16				
Settlement boundary – to define the extent of the village over the Plan period, 2011-2031	+	+	+	+	X	X	X	X	X	X	X	+	X	X	X	+	This objective is generally compatible with the SEA objectives. Policy safeguards exist within both the Core Strategy and neighbourhood plan to mitigate any impacts upon the environment.		This objective meets all of the SMART criteria.	
To identify land for necessary new housing development	?	+	?	+	X	+	?	+	+	X	+	+	X	X	X	+	This objective is generally compatible with the SEA objectives. Policy safeguards exist within both the Core Strategy and neighbourhood plan to mitigate any impacts upon the environment.	To ensure that site are fully assessed to have the lowest impact on the environment.	This objective meets all of the SMART criteria.	
To ensure that new housing is well designed, sustainable and makes a positive contribution to townscape and landscape	+	+	+	+	X	?	?	?	?	?	?	?	X	X	X	?	This objective is generally compatible with the SEA objectives. Policy safeguards exist within both the Core Strategy and neighbourhood plan to mitigate any impacts upon the environment.		This objective meets all of the SMART criteria. This objective is specific and measurable via the Authority Monitoring Report (AMR). It will be attainable, achievable and realistic.	
To enable new employment proposals of suitable scale and uses, consistent with the rural character of the parish and residential amenity	?	X	X	+	X	?	?	?	X	X	?	?	?	X	X	?	Further details are required with regards to the type of business and location.	Many of these objectives could be positive if the business were kept local thereby reducing traffic, and had policy safeguards to ensure no adverse impact upon the environment.	This objective meets all of the SMART criteria. This objective is specific and measurable via the Authority Monitoring Report (AMR). It will be attainable, achievable and realistic.	
To protect local community services and support the provision of new facilities	X	X	+	+	X	X	X	X	X	X	?	X	?	+	+	+	This objective does not have a direct relationship with many of the SEA objectives, but the objectives that there is a relationship are compatible		This objective meets the SMART criteria. This objective is specific and measurable via the Authority Monitoring Report (AMR). It will be attainable, achievable and realistic.	

To identify community needs and infrastructure to be met through developer contributions	X	+	+	+	X	+	X	X	X	X	+	+	X	X	X	+	This objective is generally compatible with the SEA objectives. Policy safeguards exist within both the Core Strategy and neighbourhood plan to mitigate any impacts upon the environment.		This objective meets the SMART criteria. This objective is specific and measurable via the Authority Monitoring Report (AMR). It will be attainable, achievable and realistic.	
To protect and enhance landscape character throughout the parish, particularly in respect of the setting of the village	+	+	+	+	X	+	+	?	?	?	+	?	X	X	X	+	This objective is generally compatible with the SEA objectives. Policy safeguards exist within both the Core Strategy and neighbourhood plan to mitigate any impacts upon the environment.		This objective meets all of the SMART criteria. This objective is specific and measurable via the Authority Monitoring Report (AMR). It will be attainable, achievable and realistic.	
To ensure design of new buildings is in keeping with the distinctive character and appearance of the village and rural area	+	+	+	+	X	?	?	?	?	?	?	?	X	X	X	?	This objective is generally compatible with the SEA objectives. Policy safeguards exist within both the Core Strategy and neighbourhood plan to mitigate any impacts upon the environment.		This objective meets all of the SMART criteria. This objective is specific and measurable via the Authority Monitoring Report (AMR). It will be attainable, achievable and realistic.	
To safeguard valued local open green spaces	+	+	?	?	X	?	?	X	X	X	?	?	X	+	+	+	This objective is generally compatible, need the location of the open spaces to ensure no adverse impact on flooding and the environment.	Ensure the location of the open spaces does not have an adverse effect on the environment, and ensure that policy safeguards exist.	This objective meets all of the SMART criteria. This objective is specific and measurable via the Authority Monitoring Report (AMR). It will be attainable, achievable and realistic.	

Template B2: Develop and Refinement of NDP options and alternatives - Draft Sutton St. Nicholas NDP, (November 2015 version) options and policies review against SEA objectives

Parish Council Name: Sutton St. Nicholas Parish Council

Neighbourhood Development Plan Name: Sutton St. Nicholas NDP

Date completed: October 2015

Objectives verses SEA Objectives (SMART and Compatibility Test)				
SEA Stage B1	Key:	SMART criteria:		
+ =/++	Compatible/very comp	S – Specific:	NDP objectives should specify what is intended to be done in detail and should not be open to a wide range of misinterpretations	<p>The following matrix appraises the emerging Sutton St. Nicholas Neighbourhood Plan options and alternatives in terms of their SMART criteria and their compatibility with the SEA Objectives.</p> <p>These have been developed from Government guidance on SEA and from the local evidence base gathered for identifying the NDP issues.</p>
- =	Possible conflict	M – Measurable:	It should be possible to monitor NDP objectives in a quantifiable way, by the use of indicators. Indicators should be measurable with limited resource implications.	
0 =	Neutral	A – Attainable/achievable:	NDP objectives should be achievable and deliverable, related to the scale of growth proposed	
X =	No relationship between objectives	R – Realistic:	NDP objectives should relate to the overall vision of the plan. Likewise, chosen indicators should relate to objectives and their outcomes.	
? =	Unclear, more information needed	T – Time-Bound:	Objectives should be specific to the NDP period or another specified time-frame. Objectives should be associated with a target and indicators should specify when the target should be achieved.	

SEA Objectives	Baseline carried over from Stage A
<p>1- To maintain and enhance nature conservation (biodiversity, flora and fauna)</p> <p>2- To maintain and enhance the quality of landscapes and townscapes</p> <p>3- To improve quality of surroundings</p> <p>4- To conserve and where appropriate enhance the historic environment and culture heritage</p> <p>5- To improve air quality</p> <p>6- To reduce the effect of traffic on the environment</p> <p>7- To reduce contributions to climate change</p> <p>8- To reduce vulnerability to climate change</p> <p>9- To improve water quality</p> <p>10- To provide for sustainable sources of water supply</p> <p>11- To avoid, reduce and manage flood risk</p> <p>12- To conserve soil resources and quality</p> <p>13- To minimise the production of waste</p> <p>14- To improve health of the population</p> <p>15- To reduce crime and nuisance</p> <p>16- To conserve natural and manmade resources</p>	<p>1-The 2011-2013 AMR does not contain updated conservation data.2010/11: 27% of Herefordshire's SSSI land was in favourable condition. Within Sutton St. Nicholas Parish there is 1 SSSI's, River Lugg unfavourable recovering. 2010/11: 17 Habitat Action Plans and 14 Species Action Plans are currently in operation across Herefordshire. There are SSSI: 1, SWS: 1, 1 SAC, no NNRs, SINC's and LNRs within the parish.</p> <p>2-There are no outstanding enforcement actions or appeals concerning locally important buildings within Sutton st Nicholas conservation area.</p> <p>3-The study reveals that within Sutton St. Nicholas parish there 1.9 ha of playing pitch area at the primary school. There are no hectares of playing pitch area with secured community access.</p> <p>4-Whilst there is no qualitative, locally specific data available at present, there are 4 SAMs in the parish, according to the latest version of the register.</p> <p>5-Between 2005 and 2010 Herefordshire's total and per capita carbon emission reduced by 7% and 8% respectively; while UK's total and per capita carbon emission reduced by 8% and 12% respectively within the same period. This suggests that air quality is improving.</p> <p>6-% of Herefordshire residents who travel to work by: Car: 70.1%, Foot: 14.7%;Bicycle: 4.3%,Bus: 2%, Train: 0.8%,Motorbike: 0.8%,Taxi: 0.3%,Other: 7%.</p> <p>7-Herefordshire latest figure of C02 emissions per capita-dates back to 2010: 1.61 million tonnes (mtCO²)</p> <p>8-Reduce the risk of flooding-There have been no approvals contrary to EA advice since reporting began in 2004.The 2011-2013 AMR does not contain updated conservation data.</p> <p>9-Percentage of river length assessed as good or very good chemical quality and ecological quality as required by the Water Framework Directive. Latest figure dates back to 2005: 84%.</p> <p>10-The parish falls into the Herefordshire Conjunctive Use Water Resource Zones (WRZs), one of 6 zones covering Herefordshire. 39% of demand is from non-household use.</p> <p>11-Number of planning permissions granted contrary to the advice of the Environment Agency on flood defence grounds. The 2011-2013 AMR does not contain updated conservation data. Sutton st. Nicholas Parish falls within the Lower Lugg catchment</p> <p>12-. Within Sutton St. Nicholas Parish the majority of the land is grade 2 and 3 (very good to moderate). Percentage of all new development completed on previously developed land.2010/11: 67%2011-13: 57%.</p> <p>16- There are numerous listed buildings within the parish and 4 SAMs. None are currently recorded in the Buildings at Risk Register. There are no outstanding enforcement actions or appeals concerning locally important buildings within Sutton St. Nicholas Parish at present. The Parish Area has the following landscape types: Principal settled farmlands.</p>

NDP Options and alternatives	SEA objectives																		
	1	2	3	4	5	6	7	8	9	10	11	12	13	14	15	16	Summary in relation to baseline	Overall commentary and any initial cumulative effects/ Recommendations	Conformity with Core Strategy in terms of SEA
Baseline	1	2	3	4	5	6	7	8	9	10	11	12	NA	NA	NA	16			
Option 1 NDP preparation A / Prepare a NDP	+	+	+	+	+	+	+	+	+	+	+	+				+	Prepare a NDP allows for certainty for the Parish, and ensures that local policies are in place to guide development.	All policies within the NDP would need to be in general conformity with the national policies and the Local Plan.	This option would meet the requirements of the Core Strategy in terms of SEA.
B / Do nothing	X	X	X	X	X	X	X	X	X	X	X	X				X	Do nothing option is essential not to produce a neighbourhood plan and rely on the criteria policies within the Core Strategy to guide further development. Specific policies and proposals for the parishes would not exist.	All developments would need to be in conformity with the Core Strategy. The Core Strategy has been subject to a Sustainability Appraisal and policies met the SEA objectives.	n/a
Option 2 Village boundary A / Use a settlement boundary to manage development at Sutton St. Nicholas	+	+	+	+	+	+	+	+	+	+	+	+				+	The designation of a settlement boundary will give additional certainty and help define those areas considered as the built form and open countryside. This can aid the direction of further growth to maintain the quality of the landscape and surroundings. There is less certainty over the positive effects on the baseline as any growth with be adjudged by criteria based policy.	Any settlement boundary would need to be designated to ensure that sufficient capacity was included to permit the proportional growth requirements within Policy RA2 of the Core Strategy. Criteria would need to be included within the policy to safeguard against effects on any SEA objectives.	This option would meet the Core Strategy requirements in terms of the SEA.
B / Do not use a settlement boundary to manage village development	?	?	+	?	+	+	+	+	+	?	?	?				+	Without a settlement boundary it would risk housing development coming forward which could cause additional environmental concerns. It does not give any level of certainty as to where potential development will be located.	The NDPs policies will need to safeguard against any effects on any of the SEA objectives.	This option would meet the Core Strategy requirements in terms of the SEA.
Option 3 Village boundary A / Retain existing boundary	++	++	+	+	+	+	+	+	+	+	+	+				+	Retaining the existing boundary would provide certainty to where the development will take place within the village, this means that specific environmental concerns can be investigated for all sites within this boundary and appropriately addressed within the policy wording.	Caution needs to be paid that the boundary isn't too restrictive that it means cramped development or inappropriate infill; policies should ensure that development is not halted due to	This option would meet with the Core Strategy requirements in terms of the SEA.

																		insufficient space.	
B / Revise the boundary with carefully considered extensions	+	++	+	++	+	+	+	+	+	+	+	+				+	This would allow a certainty for the parish as to where the development will go, but will also allow for capacity for growth within the boundary. Specific environmental concerns can be investigated for all sites within the boundary, and the boundary can be developed in the best location to limit environmental concerns.	Allowances for housing numbers within the settlement boundary will ensure that development will be appropriately located	This option would meet with the Core Strategy requirements in terms of the SEA.
Option 4 Housing Delivery A / Allocate sites for housing, as part of an overall approach to managing delivery	++	++	++	++	++	+	++	++	++	+	++	+				++	Allocation of sites for housing or other uses would give certainty to future development. Specific environmental issues could be investigated during the site search and be positively addressed within the policy wording. This option could have a positive effect on the baseline.	Pursuing this option would give greater certainty over future development within the area. If required mitigation criteria can be added to site allocations policies to ensure all SEA objectives are achieved.	This option would meet the Core Strategy requirements in terms of the SEA.
B / Deliver housing through managed windfall development, with no site allocation	+	+	+	+	+	+	+	+	+	+	+	+				+	Criteria based policy does not give the same level of certainty as the other options as it will be more reactionary than proactive in terms of growth proposals. However provided criterion is added to the policy to safeguard or mitigate against any harm, the option will have a positive effect on the baseline.	Criteria would need to be included within the policy to safeguard against effects on any SEA objectives.	This option would meet the Core Strategy requirements in terms of the SEA
Option 5 Employment development A / Allocating land for employment, as part of the overall approach to economic development	++	++	++	++	++	+	++	+	+	+	+	+				+	Allocation of sites for employment would give certainty to future development. Specific environmental issues could be investigated during the site search and be positively addressed within the policy wording. This option could have a positive effect on the baseline.	Pursuing this option would give greater certainty over future employment development within the area. If required mitigation criteria can be added to site allocations policies to ensure all SEA objectives are achieved.	This option would meet with the Core Strategy requirements in terms of the SEA.
B / Not to allocate land for employment development	+	+	+	+	?	?	+	+	+	+	?	+				?	Without the allocation of land for employment there will be the loss of certainty of land coming forward for employment. This could have an environmental impact as no sites have been chosen therefore mitigation would need to be included in the policies within the Plan.	Policies within the Plan would need to allow for mitigation for sites that would come forward for employment to ensure all SEA objectives are achieved.	This option would meet with the Core Strategy requirements in terms of the SEA.

NDP Policies	SEA objectives																Summary in relation to baseline	Overall commentary and any initial cumulative effects/ Recommendations	Conformity with Core Strategy in terms of SEA
	1	2	3	4	5	6	7	8	9	10	11	12	13	14	15	16			
Baseline	1	2	3	4	5	6	7	8	9	10	11	12	13	14	15	16			
Policy 1 – Settlement Boundary	++	++	+	+	0	0	x	x	x	x	+	+	x	x	x	+	Overall this policy has a positive effect on the baseline, as the settlement boundary will provide certainty about where development will go.	Overall this policy meets the SEA objectives and the requirements in the Core Strategy in relation to the settlement boundaries and housing development within policy RA2.	Overall this policy meets the Core Strategy requirements for the purposes of the SEA.
Policy 2 – Delivering new Housing	+	+	+	+	+	+	?	+	?	+	+	+	?	x	x	+	Overall this policy has a positive impact upon the baseline as the policy seeks to have regard to environmental constraints. The two allocated sites allow certainty as to where the majority of the development will occur within the Plan period and will allow environmental concerns to be mitigated against.	Overall this policy meets the SEA objectives and the requirements in the Core Strategy in relation to the housing strategy.	Overall this policy meets the Core Strategy requirements for the purposes of the SEA.
Policy 3 – Criteria for new housing development	++	++	+	++	x	+	+	+	+	0	+	+	+	x	x	+	Overall this policy has a positive effect on the baseline, and seeks to mitigate against the effects of housing development on the environment.	Overall this policy meets the SEA objectives and the requirements in the Core Strategy for housing proposals.	Overall this policy meets the Core Strategy requirements for the purposes of the SEA.
Policy 4 – Small-scale Employment	+	+	+	+	+	+	+	0	x	x	+	+	+	0	+	+	Overall this policy has a positive effect on the baseline. Reusing redundant buildings for employment use will help the baseline. Enabling traffic to be safely accommodated on the local roads will help meet the baseline also.	Overall this policy meets the SEA objectives and the requirements in the Core Strategy.	Overall this policy meets the Core Strategy requirements for the purposes of the SEA.
Policy 5 – Local Community Facilities	+	+	+	+	+	+	x	x	x	x	+	x	x	+	+	+	Overall this policy has a positive effect on the baseline, and seeks to mitigate against the effects of any new community development would have on the environment, it also seeks to retain and protect the existing community facilities.	Overall this policy meets the SEA objectives and the requirements in the Core Strategy.	Overall this policy meets the Core Strategy requirements for the purposes of the SEA.
Policy 6 – Landscape	++	++	+	+	+	0	+	+	0	x	+	+	x	+	x	++	Overall this policy has a positive effect on the baseline, retaining the character and setting of the landscape within the parish.	Overall this policy meets the SEA objectives and the requirements in the Core Strategy, and	Overall this policy meets the Core Strategy requirements

			+															retaining the landscape character and setting of the area.	for the purposes of the SEA.
Policy 7 – Building Design	++	++	+	+	X	X	0	?	0	X	+	+	X	X	X	++	Overall this policy has a positive effect on the baseline, retaining the distinctive character and appearance of the landscape within the parish.	Overall this policy meets the SEA objectives and the requirements in the Core Strategy, and retaining the distinctive character and appearance of the area.	Overall this policy meets the Core Strategy requirements for the purposes of the SEA.
Policy 8 – Open Spaces	++	+	+	+	X	X	X	+	0	X	+	+	X	+	X	++	Overall this policy has a positive effect on the baseline, retaining the character of the area and ensuring a valued green space is protected.	Overall this policy meets the SEA objectives and the requirements in the Core Strategy.	Overall this policy meets the Core Strategy requirements for the purposes of the SEA.
Housing Site 1 – Land adjacent to the Linnings (18 dwellings)	+	+	+	+	X	?	?	X	X	X	+	+	X	X	X	+	Overall this policy has a positive effect on the baseline, retaining the character of the area. There are policy safeguards within Policy 2 and also other policies within the Plan. To strengthen the site further renewable energy schemes could be implemented on site.	Overall this policy meets the SEA objectives and the requirements in the Core Strategy.	Overall this policy meets the Core Strategy requirements for the purposes of the SEA.
Housing site 2 – Land at the Lane (20 dwellings)	+	+	+	+	X	?	?	?	0	X	?	+	X	X	X	+	Overall this policy has a positive effect on the baseline, the supporting text details that the southern tip of the site must be retained to help with structural landscaping, and helping biodiversity measures, and to ensure sensitive design due to adjacent conservation area and listed buildings.	Overall this policy meets the SEA objectives and the requirements in the Core Strategy. Need to ensure mitigation to avoid any flood risk or flooding further downstream.	Overall this policy meets the Core Strategy requirements for the purposes of the SEA.

Template B3: Predict and evaluate the effects of the policies and sites within the Neighbourhood Development Plan

Parish Council Name: Sutton St. Nicholas Parish

Neighbourhood Development Plan Name: Sutton St. Nicholas NDP

Date completed: October 2015

Key:

++ Move towards significantly	+ Move towards Marginally	- - Move away significantly	- Move away marginally	0 Neutral	? Uncertain	N/A No relationship
--------------------------------------	----------------------------------	------------------------------------	-------------------------------	------------------	--------------------	----------------------------

Policy 1 – Settlement Boundary

SEA Objective	Assessment of effect (consider cumulative effects, significance of the effect and magnitude of the effect in terms of the three time periods)			Summary Explanation	Enhancement and mitigation opportunities
	Short term (1 – 5 years)	Medium term (6 – 10 years)	Long term (11 years +)		
To maintain and enhance nature conservation (biodiversity, flora and fauna)	++	++	++	This Policy would not lead to development itself but would direct where development would be located. This Policy is not over and above the Core Strategy in	

				terms of SEA objectives.	
To maintain and enhance the quality of landscapes and townscapes	++	++	++	This Policy would not lead to development itself but would direct where development would be located. This Policy is not over and above the Core Strategy in terms of SEA objectives.	
To improve quality of surroundings	+	+	+	This Policy would not lead to development itself but would direct where development would be located. This Policy is not over and above the Core Strategy in terms of SEA objectives.	
To conserve and where appropriate enhance the historic environment and cultural heritage	+	+	+	This Policy would not lead to development itself but would direct where development would be located. This Policy is not over and above the Core Strategy in terms of SEA objectives.	
To improve air quality	0	0	0	This Policy would not lead to development itself but would direct where development would	

				be located. This Policy is not over and above the Core Strategy in terms of SEA objectives.	
To reduce the effect of traffic on the environment	0	0	0	This Policy is not over and above the Core Strategy in terms of SEA objectives.	
To reduce contributions to climate change	X	X	X	N/A	
To reduce vulnerability to climate change	X	X	X	N/A	
To improve water quality	X	X	X	N/A	
To provide for sustainable sources of water supply	X	X	X	N/A	
To avoid, reduce and manage flood risk	+	+	+	This Policy would not lead to development itself but would direct where development would be located. This Policy is not over and above the Core Strategy in terms of SEA objectives.	
To conserve soil resources and quality	+	+	+	This Policy would not lead to development itself but would direct where development would	

				be located. This Policy is not over and above the Core Strategy in terms of SEA objectives.	
To minimise the production of waste	X	X	X	N/A	
To improve health of the population	X	X	X	N/A	
To reduce crime and nuisance	X	X	X	N/A	
To conserve natural and manmade resources	+	+	+	This Policy would not lead to development itself but would direct where development would be located. This Policy is not over and above the Core Strategy in terms of SEA objectives.	
Overall commentary and any cumulative effects	This Policy does not go over and above the Core Strategy. This policy will direct where the development within the parish should go, it will not lead to development itself.				

Policy 2 – Delivering new housing

SEA Objective	Assessment of effect (consider cumulative effects, significance of the effect and magnitude of the effect in terms of the three time periods)	Summary Explanation	Enhancement and mitigation opportunities

	Short term (1 – 5 years)	Medium term (6 – 10 years)	Long term (11 years +)		
To maintain and enhance nature conservation (biodiversity, flora and fauna)	+	+	+	This Policy is not over and above the Core Strategy in terms of SEA objectives and would only lead to small scale development in line with Policy RA3 within the Core Strategy.	
To maintain and enhance the quality of landscapes and townscapes	+	+	+	This Policy is not over and above the Core Strategy in terms of SEA objectives and would only lead to small scale development in line with Policy RA3 within the Core Strategy.	
To improve quality of surroundings	+	+	+	This Policy is not over and above the Core Strategy in terms of SEA objectives and would only lead to small scale development in line with Policy RA3 within the Core Strategy.	
To conserve and where appropriate enhance the historic environment and cultural heritage	+	+	+	This Policy is not over and above the Core Strategy in terms of SEA objectives and would only lead to small scale development in line with Policy RA3 within the Core	

				Strategy.	
To improve air quality	+	+	+	This Policy is not over and above the Core Strategy in terms of SEA objectives and would only lead to small scale development in line with Policy RA3 within the Core Strategy.	
To reduce the effect of traffic on the environment	+	+	+	This Policy is not over and above the Core Strategy in terms of SEA objectives and would only lead to small scale development in line with Policy RA3 within the Core Strategy.	
To reduce contributions to climate change	?	+	+	This Policy is not over and above the Core Strategy in terms of SEA objectives and would only lead to small scale development in line with Policy RA3 within the Core Strategy.	Additional policies within the Plan should support renewable energy and be mitigating against contributions to climate change.
To reduce vulnerability to climate change	+	+	+	This Policy is not over and above the Core Strategy in terms of SEA objectives and would only lead to small scale development in line with Policy RA3 within the Core	

				Strategy.	
To improve water quality	?	+	+	This Policy is not over and above the Core Strategy in terms of SEA objectives and would only lead to small scale development in line with Policy RA3 within the Core Strategy.	Additional policies should mitigate for the improvement in water quality.
To provide for sustainable sources of water supply	+	+	+	This Policy is not over and above the Core Strategy in terms of SEA objectives and would only lead to small scale development in line with Policy RA3 within the Core Strategy.	
To avoid, reduce and manage flood risk	+	+	+	This Policy is not over and above the Core Strategy in terms of SEA objectives and would only lead to small scale development in line with Policy RA3 within the Core Strategy.	
To conserve soil resources and quality	+	+	+	This Policy is not over and above the Core Strategy in terms of SEA objectives and would only lead to small scale development in line with Policy RA3 within the Core Strategy.	

To minimise the production of waste	?	?	+	This Policy is not over and above the Core Strategy in terms of SEA objectives and would only lead to small scale development in line with Policy RA3 within the Core Strategy.	During the development phases protocols should be in place to minimise any waste produced and ensure recycling takes place.
To improve health of the population	X	X	X	N/A	
To reduce crime and nuisance	X	X	X	N/A	
To conserve natural and manmade resources	+	+	+	This Policy is not over and above the Core Strategy in terms of SEA objectives and would only lead to small scale development in line with Policy RA3 within the Core Strategy.	
Overall commentary and any cumulative effects	This policy compliments policy RA3 of the Core Strategy and would only lead to small scale development. Policy safeguarding exists to ensure that environmental considerations are taken into account. As the majority of the housing proposed will be via two allocated sites therefore certainty of location will help to meet the SEA objectives.				

Policy 3 – Criteria for new housing

SEA Objective	Assessment of effect (consider cumulative effects, significance of the effect and magnitude of the effect in terms of the three time periods)			Summary Explanation	Enhancement and mitigation opportunities
	Short term (1 – 5 years)	Medium term (6 – 10 years)	Long term (11 years +)		
To maintain and enhance nature conservation (biodiversity, flora and fauna)	++	++	++	This Policy would not lead to development itself but contains design criteria and mitigation criteria for environmental protection. This Policy is not over and above the Core Strategy in terms of SEA objectives.	
To maintain and enhance the quality of landscapes and townscapes	++	++	++	This Policy would not lead to development itself but contains design criteria and mitigation criteria for environmental protection. This Policy is not over and above the Core Strategy in terms of SEA objectives.	
To improve quality of surroundings	+	+	+	This Policy would not lead to development itself but contains design criteria and mitigation	

				criteria for environmental protection. This Policy is not over and above the Core Strategy in terms of SEA objectives.	
To conserve and where appropriate enhance the historic environment and cultural heritage	++	++	++	This Policy would not lead to development itself but contains design criteria and mitigation criteria for environmental protection. This Policy is not over and above the Core Strategy in terms of SEA objectives.	
To improve air quality	X	X	X	N/A	
To reduce the effect of traffic on the environment	?	+	+	This Policy would not lead to development itself but contains design criteria and mitigation criteria for environmental protection. This Policy is not over and above the Core Strategy in terms of SEA objectives.	Over time the proposals should provide safe access to the developments and to the existing network
To reduce contributions to climate change	+	+	+	This Policy would not lead to development itself but contains design criteria and mitigation criteria for environmental protection. This Policy is not over and above the Core Strategy in	

				terms of SEA objectives.	
To reduce vulnerability to climate change	+	+	+	This Policy would not lead to development itself but contains design criteria and mitigation criteria for environmental protection. This Policy is not over and above the Core Strategy in terms of SEA objectives.	
To improve water quality	+	+	+	This Policy would not lead to development itself but contains design criteria and mitigation criteria for environmental protection. This Policy is not over and above the Core Strategy in terms of SEA objectives.	
To provide for sustainable sources of water supply	0	0	0	This Policy would not lead to development itself but contains design criteria and mitigation criteria for environmental protection. This Policy is not over and above the Core Strategy in terms of SEA objectives.	Policy could include criteria for water harvesting.
To avoid, reduce and manage flood risk	+	+	+	This Policy would not lead to development itself but contains design criteria and mitigation criteria for environmental	

				protection. This Policy is not over and above the Core Strategy in terms of SEA objectives.	
To conserve soil resources and quality	+	+	+	This Policy would not lead to development itself but contains design criteria and mitigation criteria for environmental protection. This Policy is not over and above the Core Strategy in terms of SEA objectives.	
To minimise the production of waste	+	+	+	This Policy would not lead to development itself but contains design criteria and mitigation criteria for environmental protection. This Policy is not over and above the Core Strategy in terms of SEA objectives.	
To improve health of the population	X	X	X	N/A	
To reduce crime and nuisance	X	X	X	N/A	
To conserve natural and manmade resources	+	+	+	This Policy would not lead to development itself but contains design criteria and mitigation criteria for environmental	

				protection. This Policy is not over and above the Core Strategy in terms of SEA objectives.	
Overall commentary and any cumulative effects	This Policy would not lead to development itself but contains design criteria and mitigation criteria for environmental protection. For both of the allocated sites and for any other housing proposals that may come forward through the plan period. This policy does not go over and above the Core Strategy.				

Policy 4 – Small-scale Employment

SEA Objective	Assessment of effect (consider cumulative effects, significance of the effect and magnitude of the effect in terms of the three time periods)			Summary Explanation	Enhancement and mitigation opportunities
	Short term (1 – 5 years)	Medium term (6 – 10 years)	Long term (11 years +)		
To maintain and enhance nature conservation (biodiversity, flora and fauna)	+	+	+	This Policy is not over and above the Core Strategy in terms of SEA objectives.	
To maintain and enhance the quality of landscapes and townscapes	+	+	+	This Policy is not over and above the Core Strategy in terms of SEA objectives.	

To improve quality of surroundings	+	+	+	This Policy is not over and above the Core Strategy in terms of SEA objectives.	
To conserve and where appropriate enhance the historic environment and cultural heritage	+	+	+	This Policy is not over and above the Core Strategy in terms of SEA objectives.	
To improve air quality	0	0	0	This Policy is not over and above the Core Strategy in terms of SEA objectives.	
To reduce the effect of traffic on the environment	+	+	++	This Policy is not over and above the Core Strategy in terms of SEA objectives.	Local areas of employment will encourage alternative modes of transport for the commute and will reduce traffic on the roads
To reduce contributions to climate change	+	+	+	This Policy is not over and above the Core Strategy in terms of SEA objectives.	
To reduce vulnerability to climate change	0	0	0	This Policy is not over and above the Core Strategy in terms of SEA objectives.	

To improve water quality	X	X	X	N/A	
To provide for sustainable sources of water supply	X	X	X	N/A	
To avoid, reduce and manage flood risk	+	+	+	This Policy is not over and above the Core Strategy in terms of SEA objectives.	
To conserve soil resources and quality	+	+	+	This Policy is not over and above the Core Strategy in terms of SEA objectives.	
To minimise the production of waste	+	+	+	This Policy is not over and above the Core Strategy in terms of SEA objectives.	
To improve health of the population	0	0	0	This Policy is not over and above the Core Strategy in terms of SEA objectives.	
To reduce crime and nuisance	X	X	X	N/A	
To conserve natural and manmade resources	+	+	+	This Policy is not over and above the Core Strategy in terms of SEA objectives.	
Overall commentary and any cumulative	This policy does not go over and above the Core Strategy. Safeguards are in place to mitigate against the				

effects	adverse impact of new development.
----------------	------------------------------------

Policy 5 – Community Facilities

SEA Objective	Assessment of effect (consider cumulative effects, significance of the effect and magnitude of the effect in terms of the three time periods)			Summary Explanation	Enhancement and mitigation opportunities
	Short term (1 – 5 years)	Medium term (6 – 10 years)	Long term (11 years +)		
To maintain and enhance nature conservation (biodiversity, flora and fauna)	+	+	+	This Policy is not over and above the Core Strategy in terms of SEA objectives.	
To maintain and enhance the quality of landscapes and townscapes	+	+	+	This Policy is not over and above the Core Strategy in terms of SEA objectives.	
To improve quality of surroundings	+	+	+	This Policy is not over and above the Core Strategy in terms of SEA objectives.	

To conserve and where appropriate enhance the historic environment and cultural heritage	+	+	+	This Policy is not over and above the Core Strategy in terms of SEA objectives.	
To improve air quality	X	X	X	N/A	
To reduce the effect of traffic on the environment	+	+	+	This Policy is not over and above the Core Strategy in terms of SEA objectives.	
To reduce contributions to climate change	X	X	X	N/A	
To reduce vulnerability to climate change	X	X	X	N/A	
To improve water quality	X	X	X	N/A	
To provide for sustainable sources of water supply	X	X	X	N/A	
To avoid, reduce and manage flood risk	+	+	+	This Policy is not over and above the Core Strategy in terms of SEA objectives.	
To conserve soil resources and quality	X	X	X	N/A	

This document is copyright of Herefordshire Council, please contact the Neighbourhood Planning team if you wish to reuse it in whole or part.

To minimise the production of waste	X	X	X	N/A	
To improve health of the population	+	+	+	This Policy is not over and above the Core Strategy in terms of SEA objectives.	
To reduce crime and nuisance	+	+	+	This Policy is not over and above the Core Strategy in terms of SEA objectives.	
To conserve natural and manmade resources	+	+	+	This Policy is not over and above the Core Strategy in terms of SEA objectives.	
Overall commentary and any cumulative effects	This policy does not go over and above the Core Strategy. Policy safeguards exist within this policy, other policies in the NDP and Core Strategy to avoid and mitigate against significant harm.				

Policy 6 – Landscape

SEA Objective	Assessment of effect (consider cumulative effects, significance of the effect and magnitude of the effect in terms of the three time periods)			Summary Explanation	Enhancement and mitigation opportunities
	Short term (1 – 5 years)	Medium term (6 – 10 years)	Long term (11 years +)		

To maintain and enhance nature conservation (biodiversity, flora and fauna)	++	++	++	This policy would not lead to development itself but contains the design and landscape criteria. This Policy is not over and above the Core Strategy in terms of SEA objectives.	
To maintain and enhance the quality of landscapes and townscapes	++	++	++	This policy would not lead to development itself but contains the design and landscape criteria. This Policy is not over and above the Core Strategy in terms of SEA objectives.	
To improve quality of surroundings	++	++	++	This policy would not lead to development itself but contains the design and landscape criteria. This Policy is not over and above the Core Strategy in terms of SEA objectives.	
To conserve and where appropriate enhance the historic environment and cultural heritage	+	+	+	This policy would not lead to development itself but contains the design and landscape criteria. This Policy is not over and above the Core Strategy in terms of SEA objectives.	

To improve air quality	+	+	+	This policy would not lead to development itself but contains the design and landscape criteria. This Policy is not over and above the Core Strategy in terms of SEA objectives.	
To reduce the effect of traffic on the environment	0	0	0	This policy would not lead to development itself but contains the design and landscape criteria. This Policy is not over and above the Core Strategy in terms of SEA objectives.	
To reduce contributions to climate change	+	+	+	This policy would not lead to development itself but contains the design and landscape criteria. This Policy is not over and above the Core Strategy in terms of SEA objectives.	
To reduce vulnerability to climate change	+	+	+	This policy would not lead to development itself but contains the design and landscape criteria. This Policy is not over and above the Core Strategy in terms of SEA objectives.	

To improve water quality	0	0	0	This policy would not lead to development itself but contains the design and landscape criteria. This Policy is not over and above the Core Strategy in terms of SEA objectives.	
To provide for sustainable sources of water supply	X	X	X	N/A	
To avoid, reduce and manage flood risk	+	+	+	This policy would not lead to development itself but contains the design and landscape criteria. This Policy is not over and above the Core Strategy in terms of SEA objectives.	
To conserve soil resources and quality	+	+	+	This policy would not lead to development itself but contains the design and landscape criteria. This Policy is not over and above the Core Strategy in terms of SEA objectives.	
To minimise the production of waste	X	X	X	N/A	
To improve health of the population	+	+	+	This policy would not lead to development itself but contains the design and landscape criteria.	

				This Policy is not over and above the Core Strategy in terms of SEA objectives.	
To reduce crime and nuisance	X	X	X	N/A	
To conserve natural and manmade resources	++	++	++	This policy would not lead to development itself but contains the design and landscape criteria. This Policy is not over and above the Core Strategy in terms of SEA objectives.	
Overall commentary and any cumulative effects	This policy would not lead to development itself but contains the design and landscape criteria. This Policy is not over and above the Core Strategy in terms of SEA objectives.				

Policy 7 – Building Design

SEA Objective	Assessment of effect (consider cumulative effects, significance of the effect and magnitude of the effect in terms of the three time periods)			Summary Explanation	Enhancement and mitigation opportunities
	Short term (1 – 5 years)	Medium term (6 – 10 years)	Long term (11 years +)		

To maintain and enhance nature conservation (biodiversity, flora and fauna)	++	++	++	This policy would not lead to development itself but contains the design criteria. This Policy is not over and above the Core Strategy in terms of SEA objectives.	
To maintain and enhance the quality of landscapes and townscapes	++	++	++	This policy would not lead to development itself but contains the design criteria. This Policy is not over and above the Core Strategy in terms of SEA objectives.	
To improve quality of surroundings	+	+	+	This policy would not lead to development itself but contains the design criteria. This Policy is not over and above the Core Strategy in terms of SEA objectives.	
To conserve and where appropriate enhance the historic environment and cultural heritage	+	+	+	This policy would not lead to development itself but contains the design criteria. This Policy is not over and above the Core Strategy in terms of SEA objectives.	
To improve air quality	X	X	X	N/A	
To reduce the effect of traffic on the environment	X	X	X	N/A	

To reduce contributions to climate change	0	0	0	This policy would not lead to development itself but contains the design criteria. This Policy is not over and above the Core Strategy in terms of SEA objectives.	
To reduce vulnerability to climate change	?	?	?	This policy would not lead to development itself but contains the design criteria. This Policy is not over and above the Core Strategy in terms of SEA objectives.	
To improve water quality	0	0	0	This policy would not lead to development itself but contains the design criteria. This Policy is not over and above the Core Strategy in terms of SEA objectives.	
To provide for sustainable sources of water supply	X	X	X	N/A	
To avoid, reduce and manage flood risk	+	+	+	This policy would not lead to development itself but contains the design criteria. This Policy is not over and above the Core Strategy in terms of SEA objectives.	
To conserve soil resources and quality	+	+	+	This policy would not lead to development itself but contains	

				the design criteria. This Policy is not over and above the Core Strategy in terms of SEA objectives.	
To minimise the production of waste	X	X	X	N/A	
To improve health of the population	X	X	X	N/A	
To reduce crime and nuisance	X	X	X	N/A	
To conserve natural and manmade resources	++	++	++	This policy would not lead to development itself but contains the design criteria. This Policy is not over and above the Core Strategy in terms of SEA objectives.	
Overall commentary and any cumulative effects	This policy would not lead to development itself but contains the design criteria. This Policy is not over and above the Core Strategy in terms of SEA objectives.				

Policy 8 – Open Spaces

SEA Objective	Assessment of effect (consider cumulative effects, significance of the effect and magnitude of the effect in terms of the three time periods)	Summary Explanation	Enhancement and mitigation opportunities
---------------	---	---------------------	--

	Short term (1 – 5 years)	Medium term (6 – 10 years)	Long term (11 years +)		
To maintain and enhance nature conservation (biodiversity, flora and fauna)	++	++	++	This Policy is not over and above the Core Strategy in terms of SEA objectives.	
To maintain and enhance the quality of landscapes and townscapes	+	+	+	This Policy is not over and above the Core Strategy in terms of SEA objectives.	
To improve quality of surroundings	+	+	+	This Policy is not over and above the Core Strategy in terms of SEA objectives.	
To conserve and where appropriate enhance the historic environment and cultural heritage	+	+	+	This Policy is not over and above the Core Strategy in terms of SEA objectives.	
To improve air quality	X	X	X	N/A	
To reduce the effect of traffic on the environment	X	X	X	N/A	

To reduce contributions to climate change	X	X	X	N/A	
To reduce vulnerability to climate change	+	+	+	This Policy is not over and above the Core Strategy in terms of SEA objectives.	
To improve water quality	0	0	0	This Policy is not over and above the Core Strategy in terms of SEA objectives.	
To provide for sustainable sources of water supply	X	X	X	N/A	
To avoid, reduce and manage flood risk	+	+	+	This Policy is not over and above the Core Strategy in terms of SEA objectives.	
To conserve soil resources and quality	+	+	+	This Policy is not over and above the Core Strategy in terms of SEA objectives.	
To minimise the production of waste	X	X	X	N/A	
To improve health of the population	+	+	+	This Policy is not over and above the Core Strategy in terms of SEA objectives.	

To reduce crime and nuisance	X	X	X	N/A	
To conserve natural and manmade resources	++	++	++	This Policy is not over and above the Core Strategy in terms of SEA objectives.	
Overall commentary and any cumulative effects	Retaining the existing open space will benefit the community, and ensuring that the loss of open space is resisted will help to mitigate against the impact of development in the parish and meet the SEA objectives.				

Site 1 – Land at the Lane (20 dwellings)

SEA Objective	Assessment of effect (consider cumulative effects, significance of the effect and magnitude of the effect in terms of the three time periods)			Summary Explanation	Enhancement and mitigation opportunities
	Short term (1 – 5 years)	Medium term (6 – 10 years)	Long term (11 years +)		
To maintain and enhance nature conservation (biodiversity, flora and fauna)	+	+	++	This Policy is not over and above the Core Strategy in terms of SEA objectives. The mitigation methods coming through the allocation will help to enhance the nature conservation of the area.	

To maintain and enhance the quality of landscapes and townscapes	+	+	++	This Policy is not over and above the Core Strategy in terms of SEA objectives. The mitigation methods coming through the allocation will help to enhance the setting of the village.	
To improve quality of surroundings	+	+	+	This Policy is not over and above the Core Strategy in terms of SEA objectives. The mitigation methods coming through the allocation will help to enhance the setting of the village.	
To conserve and where appropriate enhance the historic environment and cultural heritage	+	+	+	This Policy is not over and above the Core Strategy in terms of SEA objectives. The mitigation methods coming through the allocation will help to enhance the setting of the village.	
To improve air quality	X	X	X	N/A	
To reduce the effect of traffic on the environment	?	?	?	This Policy is not over and above the Core Strategy in terms of SEA objectives. The allocation encourages additional uses other than private car, encouraging pedestrian and cycling access to	

				the village.	
To reduce contributions to climate change	?	?	?	This Policy is not over and above the Core Strategy in terms of SEA objectives. The allocation encourages additional uses other than private car, encouraging pedestrian and cycling access to the village.	
To reduce vulnerability to climate change	X	X	X	N/A	
To improve water quality	X	X	X	N/A	
To provide for sustainable sources of water supply	X	X	X	N/A	
To avoid, reduce and manage flood risk	+	+	+	This Policy is not over and above the Core Strategy in terms of SEA objectives. The mitigation methods coming through the allocation will help to manage flood risk.	
To conserve soil resources and quality	+	+	+	This Policy is not over and above the Core Strategy in terms of SEA objectives.	

To minimise the production of waste	X	X	X	N/A	
To improve health of the population	X	X	X	N/A	
To reduce crime and nuisance	X	X	X	N/A	
To conserve natural and manmade resources	+	+	+	This Policy is not over and above the Core Strategy in terms of SEA objectives. The mitigation methods coming through the allocation will help to enhance the setting of the village.	
Overall commentary and any cumulative effects	This Policy is not over and above the Core Strategy in terms of SEA objectives. The mitigation methods coming through the allocation will help to enhance the setting of the village.				

Site 2 – Land adjacent to the Linnings (18 dwellings)

SEA Objective	Assessment of effect (consider cumulative effects, significance of the effect and magnitude of the effect in terms of the three time periods)			Summary Explanation	Enhancement and mitigation opportunities
	Short term	Medium term	Long term		

	(1 – 5 years)	(6 – 10 years)	(11 years +)		
To maintain and enhance nature conservation (biodiversity, flora and fauna)	+	+	++	This Policy is not over and above the Core Strategy in terms of SEA objectives. The mitigation methods coming through the allocation will help to enhance the nature conservation of the area.	
To maintain and enhance the quality of landscapes and townscapes	+	+	++	This Policy is not over and above the Core Strategy in terms of SEA objectives. The mitigation methods coming through the allocation will help to enhance the setting of the village.	
To improve quality of surroundings	+	+	+	This Policy is not over and above the Core Strategy in terms of SEA objectives. The mitigation methods coming through the allocation will help to enhance the setting of the village.	
To conserve and where appropriate enhance the historic environment and cultural heritage	+	+	+	This Policy is not over and above the Core Strategy in terms of SEA objectives. The mitigation methods coming through the allocation will help to enhance the setting of the	

				village.	
To improve air quality	X	X	X	N/A	
To reduce the effect of traffic on the environment	?	?	?	This Policy is not over and above the Core Strategy in terms of SEA objectives. The allocation encourages additional uses other than private car, encouraging pedestrian and cycling access to the village.	
To reduce contributions to climate change	?	?	?	This Policy is not over and above the Core Strategy in terms of SEA objectives. The allocation encourages additional uses other than private car, encouraging pedestrian and cycling access to the village.	
To reduce vulnerability to climate change	?	?	?	This Policy is not over and above the Core Strategy in terms of SEA objectives. The allocation encourages additional uses other than private car, encouraging pedestrian and cycling access to the village.	

To improve water quality	0	0	0	This Policy is not over and above the Core Strategy in terms of SEA objectives.	
To provide for sustainable sources of water supply	X	X	X	N/A	
To avoid, reduce and manage flood risk	?	?	?	This Policy is not over and above the Core Strategy in terms of SEA objectives.	
To conserve soil resources and quality	+	+	+	This Policy is not over and above the Core Strategy in terms of SEA objectives. The mitigation methods coming through the allocation will help to enhance the nature conservation of the area.	
To minimise the production of waste	X	X	X	N/A	
To improve health of the population	X	X	X	N/A	
To reduce crime and nuisance	X	X	X	N/A	
To conserve natural and manmade resources	+	+	++	This Policy is not over and above the Core Strategy in terms of SEA objectives. The mitigation	

				methods coming through the allocation will help to enhance the nature conservation of the area.	
Overall commentary and any cumulative effects	This Policy does not go over and above the Core Strategy. The mitigation methods coming through the allocation will help to enhance the nature conservation and enhance the setting of the village.				

Template B4: Assessment of cumulative impacts of the Neighbourhood Development Plan

Parish Council Name: Sutton St. Nicholas

Neighbourhood Development Plan Name: Sutton St. Nicholas

Date completed: October 2015

Key:

++ Move towards significantly	+ Move towards marginally	-- Move away Significantly	- Move away marginally	0 Neutral	? Uncertain	X No relationship
--------------------------------------	----------------------------------	-----------------------------------	-------------------------------	------------------	--------------------	--------------------------

SEA Objective Objective / Policy	1. To maintain and enhance nature conservation (biodiversity, flora and fauna)	2. To maintain and enhance the quality of landscapes and townscapes	3. To improve quality of surroundings	4. To conserve and where appropriate enhance the historic environment and culture heritage	5. To improve air quality	6. To reduce the effect of traffic on the environment	7. To reduce contributions to climate change	8. To reduce vulnerability to climate change	9. To improve water quality	10. To provide for sustainable sources of water supply	11. To avoid, reduce and manage flood risk	12. To conserve soil resources and quality	13. To minimise the production	14. To improve health of the population	15. To reduce crime and nuisance	16. To conserve natural and manmade resources
Objective 1	+	+	+	+	x	x	x	x	x	x	x	+	x	x	x	+
Objective 2	?	+	?	+	x	+	?	+	+	x	+	+	x	x	x	+
Objective 3	+	+	+	+	x	?	?	?	?	?	?	?	x	x	x	?
Objective 4	?	x	x	+	x	?	?	?	x	x	?	?	?	x	x	?
Objective 5	x	x	+	+	x	x	x	x	x	x	?	x	?	+	+	+
Objective 6	x	+	+	+	x	+	x	x	x	x	+	+	x	x	x	+
Objective 7	+	+	+	+	x	+	+	?	?	?	+	?	x	x	x	+
Objective 8	+	+	+	+	x	?	?	?	?	?	?	?	x	x	x	?
Objective 9	+	+	?	?	x	?	?	x	x	x	?	?	x	+	+	+
Policy 1	++	++	+	+	0	0	x	x	x	x	+	+	x	x	x	+
Policy 2	+	+	+	+	+	+	?	+	?	+	+	+	?	x	x	+
Policy 3	++	++	+	++	x	+	+	+	+	0	+	+	+	x	x	+
Policy 4	+	+	+	+	+	+	+	0	x	x	+	+	+	0	+	+
Policy 5	+	+	+	+	+	+	x	x	x	x	+	x	x	+	+	+
Policy 6	++	++	++	+	+	0	+	+	0	x	+	+	x	+	x	++

Policy 7	++	++	+	+	x	x	0	?	0	x	+	+	x	x	x	++
Policy 8	++	+	+	+	x	x	x	+	0	x	+	+	x	+	x	++
Site 1	+	+	+	+	x	?	?	x	x	x	+	+	x	x	x	+
Site 2	+	+	+	+	x	?	?	?	0	x	?	+	x	x	x	+
Summary of effects of whole plan on each SEA Objective	+ On balance the plan aiming to converse and enhance the natural environment.	+ On balance the plan aims to protect and enhance the environment around Sutton St. Nicholas parish and the setting and character of the village	+ The plan aims improve the quality of the surroundings and encourage additional facilities	+ The plan aims to protect and enhance the environment around Sutton St. Nicholas and the setting and character of the village	+ The Plan's objectives and policies do not specifically detail reducing the need to travel and therefore this could be strengthened to improve air quality.	+ The Plan's objectives and policies do not specifically detail reducing the need to travel and therefore this could be strengthened to improve air quality.	+ Policies include provisions to reduce the contributions to climate change such as design and renewable energy.	+ Policies are included to reduce the risks of flooding.	+ Policies are in conformity with the requirements of the Core Strategy.	+ Policies are in conformity with the requirements of the Core Strategy.	+ Policies are included to reduce the risks of flooding.	+ Policies aim to conform to the locational policies within the Core Strategy.	x	x	x	+ Policies exist to conserve or reuse existing resources.
Cumulative effects of whole plan (1 + 2 + 3...)	<i>Overall the Sutton St. Nicholas Neighbourhood Plan will contribute to meeting the SEA objectives and having a positive impact on the baseline. Policies have been drafted in general conformity with the Core Strategy objectives and contain many policy safeguards to ensure that the effects on environmental assets can be avoided or mitigated against. None of the policies are over and above those already assessed for the Core Strategy.</i>															
Commentary for significant cumulative effects	<i>The Sutton St. Nicholas neighbourhood plan is unlikely to have any significant cumulative effects on the SEA objectives.</i>															

Appendix 5

Sutton St Nicholas NDP • Note on options considered in formulating the draft Plan

Option area	Options considered	Evidence	Conclusion	Plan ref.
1: NDP preparation	A. Prepare a NDP. B. Do nothing.	Parish Council minutes.	The view of the Parish Council is that the opportunity to prepare an element of the statutory development plan for the area should be taken, to help deliver greater local control over development. Selected option: 1A.	N/A
2: Village boundary (1)	A. Use a settlement boundary to manage development at Sutton St Nicholas. B. Do not use a settlement boundary to manage village development.	Survey Q1, Core Strategy Modification MM038.	Evidence and strategic policy strongly favour definition of a settlement boundary for the village. Selected option: 2A.	Policy 1.
3: Village boundary (2)	A. Retain existing boundary. B. Revise the boundary with carefully considered extensions.	Survey Q2.	Boundary revisions seen as necessary to accommodate development and protect village character. Selected option : 3B.	Policy 1.
4: Housing delivery	A. Allocating land for housing, as part of overall approach to managing delivery. B. Deliver housing through managed windfall development, with no site allocation.	Survey Q6, Housing Site Assessment	The survey supported the positive allocation of land for new homes. The local Housing Site Assessment was used to identify suitable sites and assess windfall potential. Selected option: 4A.	Policy 2.
5: Employment development	A. Allocating land for employment, as part of the overall approach to economic development. B. Not to allocate land for employment development.	Survey Q10 and Q11, Local Plan Core Strategy policy RA6 and E1.	The survey showed limited support for new light industry or manufacturing within the Plan, or for new land allocations. Strategic policy directs such growth to larger centres. Policy 5 supports small-scale employment development through building conversion and home working. Selected option: 5B.	Policy 5.

Appendix 6

Date: 01 February 2016
Our ref: 175328
Your ref: Sutton St Nicholas



Mr J Latham
Herefordshire Council
Planning Services,
Blueschool House,
Blueschool Street
Hereford,
HR1 2ZB

Customer Services
Hornbeam House
Crewe Business Park
Electra Way
Crewe
Cheshire
CW1 6GJ

BY EMAIL ONLY

T 0300 060 3900

Dear Mr Latham

Re: Sutton St Nicholas Neighbourhood Development Plan SEA and HRA

Thank you for your consultation on the above dated and received by Natural England on 04 January 2016.

Natural England is a non-departmental public body. Our statutory purpose is to ensure that the natural environment is conserved, enhanced, and managed for the benefit of present and future generations, thereby contributing to sustainable development.

**THE CONSERVATION OF HABITATS AND SPECIES REGULATIONS 2010 (AS AMENDED)
(HABITATS REGULATIONS)**

Habitats Regulations Assessment (HRA) Report

Having reviewed the Habitats Regulations Assessment (HRA) Report we agree with the conclusion that the Sutton St Nicholas Neighbourhood Plan will not have a likely significant effect on the River Wye SAC as the draft neighbourhood plan conforms with the adopted Herefordshire Core Strategy and the proposed housing allocations fall within the level of growth proposed for the Housing Market Area in the Herefordshire Core Strategy.

Environment Report

Natural England welcomes the production of an Environmental Report. Having reviewed the report Natural England confirms that it meets the requirements of the Strategic Environmental Assessment (SEA) European Directive and national regulations, and that we concur with its conclusions.

We would be happy to comment further should the need arise but if in the meantime you have any queries please do not hesitate to contact us.

For any queries relating to the specific advice in this letter only please contact Gillian Driver on 0300 060 4335. For any new consultations, or to provide further information on this consultation please send your correspondences to consultations@naturalengland.org.uk.

We really value your feedback to help us improve the service we offer. We have attached a feedback form to this letter and welcome any comments you might have about our service.

Yours sincerely

Gillian Driver

Miss Gillian Driver
Planning Adviser
South Mercia Team

Appendix 7

Template D1: SEA Consultation Feedback

This consultation feedback is **only** for comments received on the SEA of your Neighbourhood Development Plan

Parish Council Name: Sutton St. Nicholas

Neighbourhood Development Plan Name: Sutton St. Nicholas NDP

Consultation title: Regulation 14 Draft Plan Consultation

Response Date	Consultee	Summary of Comments
01/02/2016	Natural England	Natural England welcomes the production of an Environmental Report. Having reviewed the report Natural England confirms that it meets the requirements of the Strategic Environmental Assessment (SEA) European Directive and national regulations, and that we concur with its conclusions.

Template B2: Develop and Refinement of NDP policies – Submission Draft Sutton St. Nicholas NDP, (March 2016 version) following Regulation 14 consultation

Parish Council Name: Sutton St. Nicholas Parish Council

Neighbourhood Development Plan Name: Sutton St. Nicholas NDP

Date completed: March 2016

Objectives verses SEA Objectives (SMART and Compatibility Test)				
SEA Stage B1	Key:	SMART criteria:		
+ =/++	Compatible/very comp	S – Specific:	NDP objectives should specify what is intended to be done in detail and should not be open to a wide range of misinterpretations	<p>The following matrix appraises the emerging Sutton St. Nicholas Neighbourhood Plan options and alternatives in terms of their SMART criteria and their compatibility with the SEA Objectives.</p> <p>These have been developed from Government guidance on SEA and from the local evidence base gathered for identifying the NDP issues.</p>
- =	Possible conflict	M – Measurable:	It should be possible to monitor NDP objectives in a quantifiable way, by the use of indicators. Indicators should be measurable with limited resource implications.	
0 =	Neutral	A – Attainable/achievable:	NDP objectives should be achievable and deliverable, related to the scale of growth proposed	
X =	No relationship between objectives	R – Realistic:	NDP objectives should relate to the overall vision of the plan. Likewise, chosen indicators should relate to objectives and their outcomes.	
? =	Unclear, more information needed	T – Time-Bound:	Objectives should be specific to the NDP period or another specified time-frame. Objectives should be associated with a target and indicators should specify when the target should be achieved.	

NDP Policies	SEA objectives																Summary in relation to baseline	Overall commentary and any initial cumulative effects/ Recommendations	Conformity with Core Strategy in terms of SEA
	1	2	3	4	5	6	7	8	9	10	11	12	13	14	15	16			
Baseline	1	2	3	4	5	6	7	8	9	10	11	12	13	14	15	16			
Policy 1 – Settlement Boundary	++	++	+	+	0	0	x	x	x	x	+	+	x	x	x	+	Overall this policy has a positive effect on the baseline, as the settlement boundary will provide certainty about where development will go.	Overall this policy meets the SEA objectives and the requirements in the Core Strategy in relation to the settlement boundaries and housing development within policy RA2.	Overall this policy meets the Core Strategy requirements for the purposes of the SEA.
Policy 2 – Delivering new Housing	+	+	+	+	+	+	?	+	?	+	+	+	?	x	x	+	Overall this policy has a positive impact upon the baseline as the policy seeks to have regard to environmental constraints. The two allocated sites allow certainty as to where the majority of the development will occur within the Plan period and will allow environmental concerns to be mitigated against.	Overall this policy meets the SEA objectives and the requirements in the Core Strategy in relation to the housing strategy.	Overall this policy meets the Core Strategy requirements for the purposes of the SEA.
Policy 3 – Criteria for new housing development	++	++	+	++	x	+	+	+	+	0	+	+	+	x	x	+	Overall this policy has a positive effect on the baseline, and seeks to mitigate against the effects of housing development on the environment.	Overall this policy meets the SEA objectives and the requirements in the Core Strategy for housing proposals.	Overall this policy meets the Core Strategy requirements for the purposes of the SEA.

Policy 4 – Small-scale Employment	+	+	+	+	0	+	+	0	x	x	+	+	+	0	+	+	Overall this policy has a positive effect on the baseline. Reusing redundant buildings for employment use will help the baseline. Enabling traffic to be safely accommodated on the local roads will help meet the baseline also.	Overall this policy meets the SEA objectives and the requirements in the Core Strategy.	Overall this policy meets the Core Strategy requirements for the purposes of the SEA.
Policy 5 – Local Community Facilities	+	+	+	+	x	+	x	x	x	x	+	x	x	+	+	+	Overall this policy has a positive effect on the baseline, and seeks to mitigate against the effects of any new community development would have on the environment, it also seeks to retain and protect the existing community facilities.	Overall this policy meets the SEA objectives and the requirements in the Core Strategy.	Overall this policy meets the Core Strategy requirements for the purposes of the SEA.
Policy 6 – Landscape	++	++	+	+	+	0	+	+	0	x	+	+	x	+	x	++	Overall this policy has a positive effect on the baseline, retaining the character and setting of the landscape within the parish.	Overall this policy meets the SEA objectives and the requirements in the Core Strategy, and retaining the landscape character and setting of the area.	Overall this policy meets the Core Strategy requirements for the purposes of the SEA.
Policy 7 – Building Design	++	++	+	+	x	x	0	?	0	x	+	+	x	x	x	++	Overall this policy has a positive effect on the baseline, retaining the distinctive character and appearance of the landscape within the parish.	Overall this policy meets the SEA objectives and the requirements in the Core Strategy, and retaining the distinctive character and appearance of the area.	Overall this policy meets the Core Strategy requirements for the purposes of the SEA.
Policy 8 – Open Spaces	++	+	+	+	x	x	x	+	0	x	+	+	x	+	x	++	Overall this policy has a positive effect on the baseline, retaining the character of the area and ensuring a valued green space is protected.	Overall this policy meets the SEA objectives and the requirements in the Core Strategy.	Overall this policy meets the Core Strategy requirements for the purposes of the SEA.
Policy 9 – Green Infrastructure	++	+	+	+	x	x	+	+	0	x	+	+	x	+	x	++	Overall this policy has a positive effect on the baseline, retaining the Green Infrastructure within the parish.	Overall this policy meets the SEA objectives and the requirements in the Core Strategy.	Overall this policy meets the Core Strategy requirements for the purposes of the SEA.

Template D3: Predict and evaluate the effects of the amended policies within the Neighbourhood Development Plan

Parish Council Name: Sutton St. Nicholas Parish

Neighbourhood Development Plan Name: Sutton St. Nicholas NDP

Date completed: March 2016 following Regulation 14 Draft Plan consultation

Key:

++ Move towards significantly	+ Move towards Marginally	- - Move away significantly	- Move away marginally	0 Neutral	? Uncertain	N/A No relationship
--------------------------------------	----------------------------------	------------------------------------	-------------------------------	------------------	--------------------	----------------------------

Policy 1 – Settlement Boundary

SEA Objective	Assessment of effect (consider cumulative effects, significance of the effect and magnitude of the effect in terms of the three time periods)			Summary Explanation	Enhancement and mitigation opportunities
	Short term (1 – 5 years)	Medium term (6 – 10 years)	Long term (11 years +)		
To maintain and enhance nature conservation (biodiversity, flora and fauna)	++	++	++	This Policy would not lead to development itself but would direct where development would be located. This Policy is not over and above the Core Strategy in	

				terms of SEA objectives.	
To maintain and enhance the quality of landscapes and townscapes	++	++	++	This Policy would not lead to development itself but would direct where development would be located. This Policy is not over and above the Core Strategy in terms of SEA objectives.	
To improve quality of surroundings	+	+	+	This Policy would not lead to development itself but would direct where development would be located. This Policy is not over and above the Core Strategy in terms of SEA objectives.	
To conserve and where appropriate enhance the historic environment and cultural heritage	+	+	+	This Policy would not lead to development itself but would direct where development would be located. This Policy is not over and above the Core Strategy in terms of SEA objectives.	
To improve air quality	0	0	0	This Policy would not lead to development itself but would direct where development would	

				be located. This Policy is not over and above the Core Strategy in terms of SEA objectives.	
To reduce the effect of traffic on the environment	0	0	0	This Policy is not over and above the Core Strategy in terms of SEA objectives.	
To reduce contributions to climate change	X	X	X	N/A	
To reduce vulnerability to climate change	X	X	X	N/A	
To improve water quality	X	X	X	N/A	
To provide for sustainable sources of water supply	X	X	X	N/A	
To avoid, reduce and manage flood risk	+	+	+	This Policy would not lead to development itself but would direct where development would be located. This Policy is not over and above the Core Strategy in terms of SEA objectives.	
To conserve soil resources and quality	+	+	+	This Policy would not lead to development itself but would direct where development would	

				be located. This Policy is not over and above the Core Strategy in terms of SEA objectives.	
To minimise the production of waste	X	X	X	N/A	
To improve health of the population	X	X	X	N/A	
To reduce crime and nuisance	X	X	X	N/A	
To conserve natural and manmade resources	+	+	+	This Policy would not lead to development itself but would direct where development would be located. This Policy is not over and above the Core Strategy in terms of SEA objectives.	
Overall commentary and any cumulative effects	This Policy does not go over and above the Core Strategy. This policy will direct where the development within the parish should go, it will not lead to development itself. The additional two areas Added to the settlement boundary do not have an significant adverse effect.				

Policy 2 – Delivering new housing

SEA Objective	Assessment of effect (consider cumulative effects, significance of the effect and magnitude of the effect in terms of the three time periods)	Summary Explanation	Enhancement and mitigation opportunities

	Short term (1 – 5 years)	Medium term (6 – 10 years)	Long term (11 years +)		
To maintain and enhance nature conservation (biodiversity, flora and fauna)	+	+	+	This Policy is not over and above the Core Strategy in terms of SEA objectives and would only lead to small scale development in line with Policy RA3 within the Core Strategy.	
To maintain and enhance the quality of landscapes and townscapes	+	+	+	This Policy is not over and above the Core Strategy in terms of SEA objectives and would only lead to small scale development in line with Policy RA3 within the Core Strategy.	
To improve quality of surroundings	+	+	+	This Policy is not over and above the Core Strategy in terms of SEA objectives and would only lead to small scale development in line with Policy RA3 within the Core Strategy.	
To conserve and where appropriate enhance the historic environment and cultural heritage	+	+	+	This Policy is not over and above the Core Strategy in terms of SEA objectives and would only lead to small scale development in line with Policy RA3 within the Core	

				Strategy.	
To improve air quality	+	+	+	This Policy is not over and above the Core Strategy in terms of SEA objectives and would only lead to small scale development in line with Policy RA3 within the Core Strategy.	
To reduce the effect of traffic on the environment	+	+	+	This Policy is not over and above the Core Strategy in terms of SEA objectives and would only lead to small scale development in line with Policy RA3 within the Core Strategy.	
To reduce contributions to climate change	?	+	+	This Policy is not over and above the Core Strategy in terms of SEA objectives and would only lead to small scale development in line with Policy RA3 within the Core Strategy.	
To reduce vulnerability to climate change	+	+	+	This Policy is not over and above the Core Strategy in terms of SEA objectives and would only lead to small scale development in line with Policy RA3 within the Core Strategy.	

To improve water quality	?	+	+	This Policy is not over and above the Core Strategy in terms of SEA objectives and would only lead to small scale development in line with Policy RA3 within the Core Strategy.	
To provide for sustainable sources of water supply	+	+	+	This Policy is not over and above the Core Strategy in terms of SEA objectives and would only lead to small scale development in line with Policy RA3 within the Core Strategy.	
To avoid, reduce and manage flood risk	+	+	+	This Policy is not over and above the Core Strategy in terms of SEA objectives and would only lead to small scale development in line with Policy RA3 within the Core Strategy.	
To conserve soil resources and quality	+	+	+	This Policy is not over and above the Core Strategy in terms of SEA objectives and would only lead to small scale development in line with Policy RA3 within the Core Strategy.	

To minimise the production of waste	?	?	+	This Policy is not over and above the Core Strategy in terms of SEA objectives and would only lead to small scale development in line with Policy RA3 within the Core Strategy.	During the development phases protocols should be in place to minimise any waste produced and ensure recycling takes place.
To improve health of the population	X	X	X	N/A	
To reduce crime and nuisance	X	X	X	N/A	
To conserve natural and manmade resources	+	+	+	This Policy is not over and above the Core Strategy in terms of SEA objectives and would only lead to small scale development in line with Policy RA3 within the Core Strategy.	
Overall commentary and any cumulative effects	<p>This policy compliments policy RA3 of the Core Strategy and would only lead to small scale development. Policy safeguarding exists to ensure that environmental considerations are taken into account. As the majority of the housing proposed will be via two allocated sites therefore certainty of location will help to meet the SEA objectives. The additional information within the supporting statements is ensuring that there is sufficient capacity within the waste water treatment prior to development, this adds additional positive conclusions against the SEA objectives.</p>				

Policy 3 – Criteria for new housing

SEA Objective	Assessment of effect (consider cumulative effects, significance of the effect and magnitude of the effect in terms of the three time periods)			Summary Explanation	Enhancement and mitigation opportunities
	Short term (1 – 5 years)	Medium term (6 – 10 years)	Long term (11 years +)		
To maintain and enhance nature conservation (biodiversity, flora and fauna)	++	++	++	This Policy would not lead to development itself but contains design criteria and mitigation criteria for environmental protection. This Policy is not over and above the Core Strategy in terms of SEA objectives.	
To maintain and enhance the quality of landscapes and townscapes	++	++	++	This Policy would not lead to development itself but contains design criteria and mitigation criteria for environmental protection. This Policy is not over and above the Core Strategy in terms of SEA objectives.	
To improve quality of surroundings	+	+	+	This Policy would not lead to development itself but contains design criteria and mitigation	

				criteria for environmental protection. This Policy is not over and above the Core Strategy in terms of SEA objectives.	
To conserve and where appropriate enhance the historic environment and cultural heritage	++	++	++	This Policy would not lead to development itself but contains design criteria and mitigation criteria for environmental protection. This Policy is not over and above the Core Strategy in terms of SEA objectives.	
To improve air quality	X	X	X	N/A	
To reduce the effect of traffic on the environment	+	++	++	This Policy would not lead to development itself but contains design criteria and mitigation criteria for environmental protection. This Policy is not over and above the Core Strategy in terms of SEA objectives. The policy encourages active travel.	
To reduce contributions to climate change	+	+	++	This Policy would not lead to development itself but contains design criteria and mitigation criteria for environmental protection. This Policy is not over	

				and above the Core Strategy in terms of SEA objectives.	
To reduce vulnerability to climate change	+	+	+	This Policy would not lead to development itself but contains design criteria and mitigation criteria for environmental protection. This Policy is not over and above the Core Strategy in terms of SEA objectives.	
To improve water quality	+	+	+	This Policy would not lead to development itself but contains design criteria and mitigation criteria for environmental protection. This Policy is not over and above the Core Strategy in terms of SEA objectives.	
To provide for sustainable sources of water supply	0	0	0	This Policy would not lead to development itself but contains design criteria and mitigation criteria for environmental protection. This Policy is not over and above the Core Strategy in terms of SEA objectives.	
To avoid, reduce and manage flood risk	+	++	++	This Policy would not lead to development itself but contains design criteria and mitigation	

				criteria for environmental protection. This Policy is not over and above the Core Strategy in terms of SEA objectives. There is a specific criteria in the policy that ensures that development will not cause additional risk to flooding and will undertake sequential testing prior to applications being approved.	
To conserve soil resources and quality	+	+	+	This Policy would not lead to development itself but contains design criteria and mitigation criteria for environmental protection. This Policy is not over and above the Core Strategy in terms of SEA objectives.	
To minimise the production of waste	+	+	+	This Policy would not lead to development itself but contains design criteria and mitigation criteria for environmental protection. This Policy is not over and above the Core Strategy in terms of SEA objectives.	
To improve health of the population	X	X	X	N/A	

To reduce crime and nuisance	X	X	X	N/A	
To conserve natural and manmade resources	+	+	+	This Policy would not lead to development itself but contains design criteria and mitigation criteria for environmental protection. This Policy is not over and above the Core Strategy in terms of SEA objectives.	
Overall commentary and any cumulative effects	This Policy would not lead to development itself but contains design criteria and mitigation criteria for environmental protection. For both of the allocated sites and for any other housing proposals that may come forward through the plan period. This policy does not go over and above the Core Strategy. The additional wording encourages active travel and ensures that development does not come before there is capacity within the wastewater treatment works.				

Policy 4 – Small-scale Employment

SEA Objective	Assessment of effect (consider cumulative effects, significance of the effect and magnitude of the effect in terms of the three time periods)			Summary Explanation	Enhancement and mitigation opportunities
	Short term (1 – 5 years)	Medium term (6 – 10 years)	Long term (11 years +)		

To maintain and enhance nature conservation (biodiversity, flora and fauna)	+	+	+	This Policy is not over and above the Core Strategy in terms of SEA objectives.	
To maintain and enhance the quality of landscapes and townscapes	+	+	+	This Policy is not over and above the Core Strategy in terms of SEA objectives.	
To improve quality of surroundings	+	+	+	This Policy is not over and above the Core Strategy in terms of SEA objectives.	
To conserve and where appropriate enhance the historic environment and cultural heritage	+	+	+	This Policy is not over and above the Core Strategy in terms of SEA objectives.	
To improve air quality	0	0	0	This Policy is not over and above the Core Strategy in terms of SEA objectives.	
To reduce the effect of traffic on the environment	+	+	++	This Policy is not over and above the Core Strategy in terms of SEA objectives. Local areas of employment will encourage alternative modes of transport for the commute and will reduce	Local areas of employment will encourage alternative modes of transport for the commute and will reduce traffic on the

				traffic on the roads. Active travel is being encouraged to reduce the effect of traffic on the roads.	roads
To reduce contributions to climate change	+	+	++	This Policy is not over and above the Core Strategy in terms of SEA objectives. Encouraging active travel will help to reduce emissions from vehicles .	
To reduce vulnerability to climate change	0	0	0	This Policy is not over and above the Core Strategy in terms of SEA objectives.	
To improve water quality	X	X	X	N/A	
To provide for sustainable sources of water supply	X	X	X	N/A	
To avoid, reduce and manage flood risk	+	+	+	This Policy is not over and above the Core Strategy in terms of SEA objectives.	
To conserve soil resources and quality	+	+	+	This Policy is not over and above the Core Strategy in terms of SEA objectives.	
To minimise the production of waste	+	+	+	This Policy is not over and above the Core Strategy in terms of SEA	

				objectives.	
To improve health of the population	0	0	0	This Policy is not over and above the Core Strategy in terms of SEA objectives.	
To reduce crime and nuisance	X	X	X	N/A	
To conserve natural and manmade resources	+	+	+	This Policy is not over and above the Core Strategy in terms of SEA objectives.	
Overall commentary and any cumulative effects	This policy does not go over and above the Core Strategy. Safeguards are in place to mitigate against the adverse impact of new development.				

Policy 5 – Community Facilities

SEA Objective	Assessment of effect (consider cumulative effects, significance of the effect and magnitude of the effect in terms of the three time periods)			Summary Explanation	Enhancement and mitigation opportunities
	Short term (1 – 5 years)	Medium term (6 – 10 years)	Long term (11 years +)		

To maintain and enhance nature conservation (biodiversity, flora and fauna)	+	+	+	This Policy is not over and above the Core Strategy in terms of SEA objectives.	
To maintain and enhance the quality of landscapes and townscapes	+	+	+	This Policy is not over and above the Core Strategy in terms of SEA objectives.	
To improve quality of surroundings	+	+	+	This Policy is not over and above the Core Strategy in terms of SEA objectives.	
To conserve and where appropriate enhance the historic environment and cultural heritage	+	+	+	This Policy is not over and above the Core Strategy in terms of SEA objectives.	
To improve air quality	X	X	X	N/A	
To reduce the effect of traffic on the environment	+	+	++	This Policy is not over and above the Core Strategy in terms of SEA objectives. Active travel is being encouraged.	
To reduce contributions to climate change	X	X	X	N/A	

To reduce vulnerability to climate change	X	X	X	N/A	
To improve water quality	X	X	X	N/A	
To provide for sustainable sources of water supply	X	X	X	N/A	
To avoid, reduce and manage flood risk	+	+	+	This Policy is not over and above the Core Strategy in terms of SEA objectives.	
To conserve soil resources and quality	X	X	X	N/A	
To minimise the production of waste	X	X	X	N/A	
To improve health of the population	+	+	+	This Policy is not over and above the Core Strategy in terms of SEA objectives.	
To reduce crime and nuisance	+	+	+	This Policy is not over and above the Core Strategy in terms of SEA objectives.	
To conserve natural and manmade resources	+	+	+	This Policy is not over and above the Core Strategy in terms of SEA objectives.	

Overall commentary and any cumulative effects	This policy does not go over and above the Core Strategy. Policy safeguards exist within this policy, other policies in the NDP and Core Strategy to avoid and mitigate against significant harm. Active travel is being encouraged which will reduce the need for the volume of vehicles on the road.
--	--

Policy 9 – Green Infrastructure

SEA Objective	Assessment of effect (consider cumulative effects, significance of the effect and magnitude of the effect in terms of the three time periods)			Summary Explanation	Enhancement and mitigation opportunities
	Short term (1 – 5 years)	Medium term (6 – 10 years)	Long term (11 years +)		
To maintain and enhance nature conservation (biodiversity, flora and fauna)	++	++	++	This Policy is not over and above the Core Strategy in terms of SEA objectives.	
To maintain and enhance the quality of landscapes and townscapes	+	+	+	This Policy is not over and above the Core Strategy in terms of SEA objectives.	
To improve quality of surroundings	+	+	+	This Policy is not over and above the Core Strategy in terms of SEA objectives.	

To conserve and where appropriate enhance the historic environment and cultural heritage	+	+	+	This Policy is not over and above the Core Strategy in terms of SEA objectives.	
To improve air quality	X	X	X	N/A	
To reduce the effect of traffic on the environment	X	X	X	N/A	
To reduce contributions to climate change	+	+	+	This Policy is not over and above the Core Strategy in terms of SEA objectives.	
To reduce vulnerability to climate change	+	+	+	This Policy is not over and above the Core Strategy in terms of SEA objectives.	
To improve water quality	0	0	+	This Policy is not over and above the Core Strategy in terms of SEA objectives.	
To provide for sustainable sources of water supply	X	X	X	N/A	
To avoid, reduce and manage flood risk	+	+	+	This Policy is not over and above the Core Strategy in terms of SEA	

				objectives.	
To conserve soil resources and quality	+	+	+	This Policy is not over and above the Core Strategy in terms of SEA objectives.	
To minimise the production of waste	X	X	X	N/A	
To improve health of the population	+	+	+	This Policy is not over and above the Core Strategy in terms of SEA objectives.	
To reduce crime and nuisance	X	X	X	N/A	
To conserve natural and manmade resources	++	++	++	This Policy is not over and above the Core Strategy in terms of SEA objectives.	
Overall commentary and any cumulative effects	Protecting and enhancing the existing green infrastructure and seeking to provide new Green Infrastructure will protect the environment, and will help to mitigate against the impact of development in the parish and meet the SEA objectives.				

Appendix 8

Objectives and context	Where referenced in NDP/SEA
<ul style="list-style-type: none"> • The Neighbourhood Development Plan's purpose and objectives are made clear. • The Neighbourhood Area's environmental issues and constraints, including acknowledgement of those in the Local Plan (Core Strategy) SA, where relevant, and local environmental protection objectives, are considered in developing objectives and targets. • SEA objectives are clearly set out and linked to indicators and targets where appropriate. • Links with other locally related plans, programmes and policies are identified, explained and acknowledgement for those set out in the SA of the Local Plan (Core Strategy) is given, where relevant. • Conflicts that exist between SEA and Neighbourhood Development Plan objectives; and between SEA objectives and other local plan objectives are identified and described. 	<ul style="list-style-type: none"> • Section 1 (paras 1.9 – 1.10). • Sections 2 and 3; and Tables A2 and A3 • Section 3 (para 3.7). • Section 3 (para 3.5). • Section 3 (paras 3.8 – 3.13)
Scoping	
<ul style="list-style-type: none"> • Statutory Consultees are consulted in appropriate ways and at appropriate times on the content and scope of the Environmental Report. • The assessment focuses on significant issues. • Technical, procedural and other difficulties encountered are discussed; assumptions and uncertainties are made explicit. 	<ul style="list-style-type: none"> • Section 2 (paras 2.6 – 2.12) and Appendix 3 and 6 • Sections 2 and 4 • Sections 2 and 4

Alternatives	
<ul style="list-style-type: none"> Realistic alternatives are considered for key issues, and the reasons for choosing them are documented. Alternatives include 'do minimum' and/or 'business as usual' scenarios wherever relevant. The environmental effects (both adverse and beneficial) of each alternative are identified and compared. Inconsistencies between the alternatives and other relevant local plans, programmes or policies are identified and explained. Reasons are given for selection or elimination of alternatives. 	Section 5 (5.1 to 5.5)
Baseline information	
<ul style="list-style-type: none"> Relevant aspects of the current state of the local, neighbourhood area environment and their likely evolution without the Neighbourhood Development Plan are described. Acknowledgement to the information in the SA of the Local Plan (Core Strategy) is given, where relevant. Environmental characteristics of the local, neighbourhood area, likely to be significantly affected are described, including areas wider than the physical boundary of the designated neighbourhood area, where it is likely to be affected by the Neighbourhood Development Plan. Difficulties such as deficiencies in information or methods are explained. 	<ul style="list-style-type: none"> Section 1 and 4. Initial screening report and Section 1. Section 2.

Prediction and evaluation of likely significant environmental effects	
<ul style="list-style-type: none"> Effects identified include the types listed in the Directive (biodiversity, population, human health, fauna, flora, soil, water, air, climate factors, material assets, cultural heritage and landscape), as relevant; and other local likely environmental effects are also covered, as appropriate. Both positive and negative effects are considered, and the duration of effects (short, medium or long-term) is addressed. Likely secondary, cumulative (growing in quantity and strength) and synergistic (acting together) effects are identified, where practicable. Inter-relationships between effects are considered, where practicable. The prediction and evaluation of effects makes use of relevant accepted standards, regulations, and thresholds (i.e. data gathered for the evidence base). Methods used to evaluate the effects are described. 	<ul style="list-style-type: none"> Tables A2, A3 and A4 (Appendix 2) Tables B2 and B3 (Appendix 4) Table B4 (Appendix 4) Section 4 Section 4 Section 2
Mitigation measures	
<ul style="list-style-type: none"> Measures envisaged to prevent, reduce and offset any significant adverse effects of implementing the Neighbourhood Development Plan are indicated. Issues to be taken into account when determining planning applications or other projects, for example funding bids, are identified. 	<ul style="list-style-type: none"> Section 6 (paras 6.5 to 6.9) Section 4

The Environmental Report	
<ul style="list-style-type: none"> • Is clear and concise in its layout and presentation. • Uses simple, clear language and avoids or explains technical terms. • Uses maps and other illustrations, where appropriate. • Explains the methodology used. • Explains who was consulted and what methods of consultation were used. • Identifies sources of information, including expert judgement and matters of opinion. • Contains a non-technical summary covering the overall approach to the SEA, the objectives of the Neighbourhood Development Plan, the main options considered, and any changes to the Neighbourhood Development Plan resulting from the SEA. 	<ul style="list-style-type: none"> • N/A • N/A • N/A • Section 2 • Section 2 • Section 2 • Included at page 1
Consultation	
<ul style="list-style-type: none"> • The SEA is consulted on as an integral part of the plan-making process of the Neighbourhood Development Plan. • Consultation Bodies and the public likely to be affected by, or having an interest in, the Neighbourhood Development Plan are consulted in ways and at times, which give them an early and effective opportunity within appropriate time frames to express their opinions on the draft Neighbourhood Development Plan and Environmental Report. 	<ul style="list-style-type: none"> • Section 2 (paras 2.4 – 2.5) • Section 6

Decision-making and information on the decision	
<ul style="list-style-type: none"> The environmental report and the opinions of those consulted are taken into account in finalising and adopting the Neighbourhood Development Plan. An explanation is given of how they have been taken into account. Reasons are given for choosing the Neighbourhood Development Plan as adopted, in the light of other reasonable alternatives considered. 	<ul style="list-style-type: none"> Sections 2 and 6 Section 6 Section 6
Monitoring measures	
<ul style="list-style-type: none"> Measures proposed for monitoring the Neighbourhood Development Plan are clear, practicable and linked to the indicators and objectives used in the SEA. Monitoring is used, where appropriate, during implementation of the Neighbourhood Development Plan to make good deficiencies in baseline information in the SEA. Acknowledgement that monitoring enables unforeseen adverse effects to be identified at an early stage. (These effects may include predictions which prove to be incorrect.) Proposals are made for action in response to significant adverse effects arising from the monitoring of the Neighbourhood Development Plan. 	<ul style="list-style-type: none"> Section 5 Section 5 Section 5 Section 5