

Strategic Environmental Assessment



Bartestree with Lugwardine Neighbourhood Area

Scoping Report

July 2014

Consultation on the Scoping Report

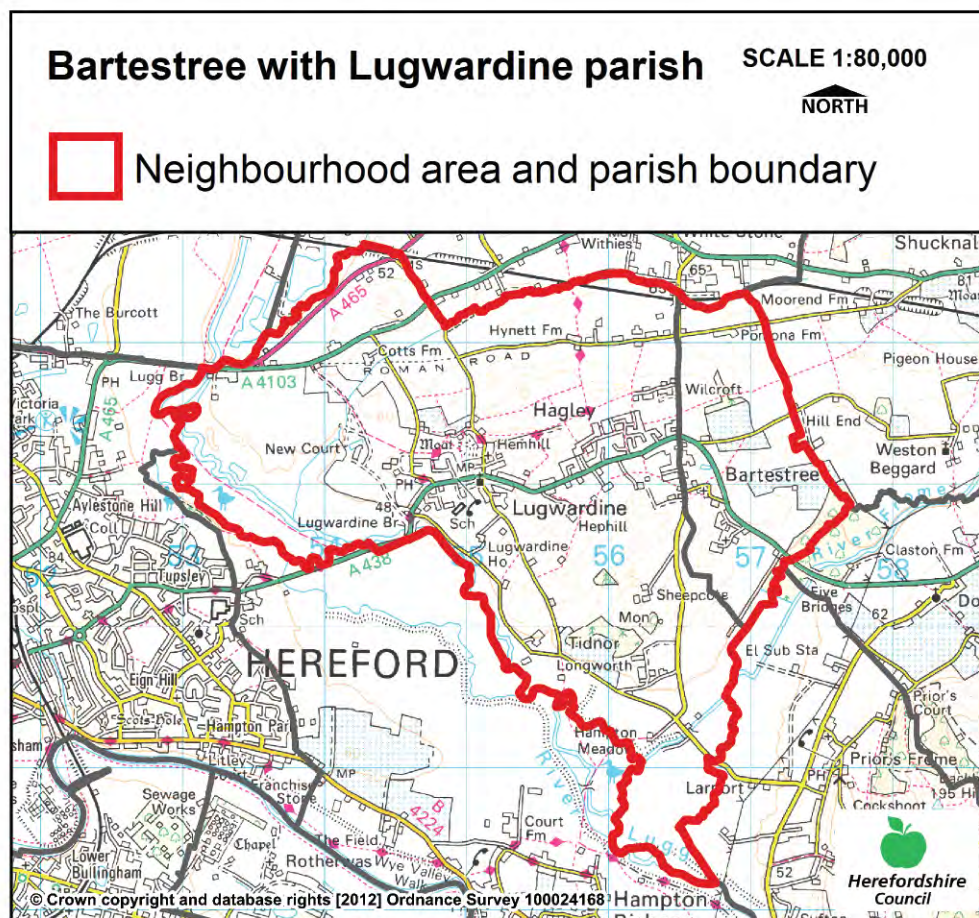
The aim of the consultation process is to involve and engage with statutory consultees and other relevant bodies on the scope of the appraisal. In particular, it seeks to:

- Ensure the SEA is both comprehensive and sufficiently robust to support the Neighbourhood Development Plan during the later stages of full public consultation;
- Seek advice on the completeness of the plan review and baseline data and gain further information where appropriate;
- Seek advice on the suitability of key sustainability issues;
- Seek advice on the suitability of the sustainability objectives.

Comments on this Scoping Report have been invited from the three consultation bodies as required by the SEA regulations, together with the Natural Resources Wales.

The three consultation bodies are as follows:

1. Natural England;
2. English Heritage;
3. Environment Agency.



Template A1: Identification and review of local Neighbourhood Area relevant plans, policies and programmes

Parish Council Name: Bartestree and Lugwardine group

Neighbourhood Development Plan Name: Bartestree and Lugwardine group plan

Date completed: June 2014

Plans and Programmes	Type of document	Date	Overview	Key message, target/objective/indicator	SEA topic(s) ¹	Implications for the NDP and SEA
Revised EU Sustainable Development strategy	European Union Strategy	2009	Sets out a single strategy on how the EU will more effectively meet its long-standing commitment to meet the challenges of sustainable development.	Recognises the need to gradually change current unsustainable consumption and production patterns and move towards a better integrated approach to policy making. The Strategy sets overall objectives, targets and concrete actions for seven key priority challenges, predominantly environmental: <ul style="list-style-type: none">• Climate change and clean energy;• Sustainable transport• Sustainable production and consumption;• Public health threats;• Better management of natural resources;• Social inclusion, demography and migration;• Fighting global poverty.	<ul style="list-style-type: none">• Air• Climate factors• Cultural heritage and the landscape• Population and human health	The Neighbourhood Plans should take into account the objectives of the strategy. The aim of sustainable development should be implicit in its approach.

¹ Derived from the LDF General Scoping Report (June 2007)

This document is copyright of Herefordshire Council, please contact the Neighbourhood Planning team if you wish to reuse it in whole or part.

Plans and Programmes	Type of document	Date	Overview	Key message, target/objective/indicator	SEA topic(s) ¹	Implications for the NDP and SEA
				•		
National Planning Policy Framework (NPPF)	National planning policy.	2012	Consolidates the suite of PPG/PPS into one succinct planning policy document.		<ul style="list-style-type: none"> • Air • Biodiversity • Climate factors • Cultural heritage and the landscape • Flora and fauna • Material assets • Population and human health • Soil • Water 	The NDP should take into account the relevant policies set within the NPPF.
Planning Practice Guidance	Government Guidance	2014	Provides guidance to local planning authorities and others on the operation of the planning system.		<ul style="list-style-type: none"> • Air • Biodiversity • Climate factors • Cultural heritage and the landscape • Flora and fauna • Material assets • Population and human health • Soil • Water 	The NDP should take into account the planning guidance provided within these documents.

Plans and Programmes	Type of document	Date	Overview	Key message, target/objective/indicator	SEA topic(s) ¹	Implications for the NDP and SEA
Herefordshire Core Strategy, Pre-submission document 2011-2031	Development Plan Document (DPD)	2013	Sets out the vision, objectives and policies for the Herefordshire Local Plan (Core Strategy), which will guide development across the county up to 2031.	<p>Outlines the emerging suite of countywide planning policies relating to housing, economic development and the environment, which the NDP will need to be in conformity with where relevant.</p> <p>The Core Strategy includes a range of objectives, five of which directly relate to rural areas:</p> <ul style="list-style-type: none"> • To meet the housing needs of all sections of the community • To improve access to services in rural areas • To strengthen the economic viability of the villages and their rural hinterlands • To achieve sustainable communities and protect the environment • To conserve, promote, utilise and enjoy our natural, built, historic and cultural assets for the fullest benefit of the whole community <p>To achieve a thriving rural Herefordshire, the Core Strategy seeks to enhance the role the villages have</p>	<ul style="list-style-type: none"> • Air • Biodiversity • Climate factors • Cultural heritage and the landscape • Flora and fauna • Material assets • Population and human health • Soil • Water 	<p>The NDP should take account of relevant policies set within in the Core Strategy.</p> <p>Where necessary, the NDP should provide services, facilities and employment opportunities that are accessible to both local and neighbouring communities.</p> <p>Bartestree and Lugwardine Group is under RA1 policy and should take into consideration the criteria set within this policy.</p> <p>Approx 117 dwellings will need to be delivered within the villages of Bartestree and Lugwardine.</p>

This document is copyright of Herefordshire Council, please contact the Neighbourhood Planning team if you wish to reuse it in whole or part.

Plans and Programmes	Type of document	Date	Overview	Key message, target/objective/indicator	SEA topic(s) ¹	Implications for the NDP and SEA
				<p>traditionally played in as accessible, sustainable centres for their rural catchments.</p> <p>Seeks proportional growth of up to 18% in Bartestree and Lugwardine villages (which in in the Hereford HMA) over the plan period.</p>		
Herefordshire Local Transport Plan 3 (LTP) 2013-2015	Corporate	2013	Sets out the Council's strategy for supporting economic growth, social inclusion and reducing the environmental impacts of transport, as well as the program of investment for the period April 2013 to April 2015.	The document includes three key objectives, one which seeks to maintain access for rural residents and people without access to a car. Intrinsic to this is the retention of a 'core network' of bus services which focus on journeys between Hereford and the market towns, along with main transport corridors close to larger rural settlements. To this end, the strategy aims to increase the number of bus users by 1.3% (4,700 journeys) by 2015.	<ul style="list-style-type: none"> • Air • Climate factors • Population and human health 	<p>The LTP does not explore current transport issues in the Bartestree and Lugwardine Group Plan neighbourhood area.</p> <p>But any new development proposed through the NDP should seek to reduce the environmental impacts of transport.</p>

Plans and Programmes	Type of document	Date	Overview	Key message, target/objective/indicator	SEA topic(s) ¹	Implications for the NDP and SEA
Malvern Hills AONB Management Plan 2009-2014	Corporate	2009	Identifies the issues and challenges facing the special features of the area and contains 24 guiding principles and 46 strategic objectives which will help address them.		<ul style="list-style-type: none"> • Air • Biodiversity • Climate factors • Cultural heritage and the landscape • Flora and fauna • Material assets • Population and human health • Soil • Water 	The Bartestree and Lugwardine Group plan, neighbourhood Area is not within or adjacent to the Malvern Hills AONB.

Plans and Programmes	Type of document	Date	Overview	Key message, target/objective/indicator	SEA topic(s) ¹	Implications for the NDP and SEA
Wye Valley AONB management Plan 2009-2014	Corporate	2009	The Management Plan is the prime document which sets out the vision for the area and the priorities for its management.		<ul style="list-style-type: none"> • Air • Biodiversity • Climate factors • Cultural heritage and the landscape • Flora and fauna • Material assets • Population and human health • Soil • Water 	The Bartestree and Lugwardine Group Plan neighbourhood Area is not within or adjacent to the Wye Valley AONB.

Plans and Programmes	Type of document	Date	Overview	Key message, target/objective/indicator	SEA topic(s) ¹	Implications for the NDP and SEA
Herefordshire Economic Development Strategy 2011-2016	Corporate	2011	Aims to increase the economic wealth of Herefordshire by setting out proposals and to support business growth up to 2016.	<p>The document outlines the path and direction to foster economic vitality within Herefordshire. Key objectives therefore include:</p> <ul style="list-style-type: none"> • Sustaining business survival and growth • Increasing wage levels, range and quality of jobs • Having a skilled population to meet future work needs • Developing the county's built infrastructure so enterprise can flourish. 	<ul style="list-style-type: none"> • Cultural heritage and the landscape • Material assets • Population and human health 	None of merit.

Plans and Programmes	Type of document	Date	Overview	Key message, target/objective/indicator	SEA topic(s) ¹	Implications for the NDP and SEA
Herefordshire Employment Land Study	Evidence	2012	Includes employment land assessments for the plan period 2011-2031. The study includes Quantitative and Qualitative assessments of employment land, assessment of market demand and need, as well as providing forecasts and recommendations for future employment need over the plan period.	<p>This study covers existing employment sites in Hereford, the five market towns and their rural hinterlands.</p> <p>There are no employment land allocations within Bartestree and Lugwardine at present and so the study does not identify sites which are worthy of continued protection from alternative uses. Nor does it make any recommendations in respect of employment need within the neighbourhood area.</p>	<ul style="list-style-type: none"> • Material assets • Population and human health 	None of merit; however the NDP process may have to explore whether there is any employment need locally and if so whether there is any scope for providing employment land and premises.

Plans and Programmes	Type of document	Date	Overview	Key message, target/objective/indicator	SEA topic(s) ¹	Implications for the NDP and SEA
Herefordshire Strategic Housing Land Availability Assessment (SHLAA)	Evidence	2009	<p>The SHLAA aims to justify site allocations in plans by:</p> <ul style="list-style-type: none"> Identifying sites which are capable of delivering housing development Assessing sites for their housing potential; and Predicting when a site could be developed for housing. 	<p>In terms of Bartestree and Lugwardine Group previous SHLAA undertaken in 2009 identified:</p> <ul style="list-style-type: none"> 3 sites in Lugwardine that were significantly constraints with a total of 65 possible dwellings; 9 sites in Lugwardine that were rejected due to constraints; 6 sites in Bartestree with minor constraints; 2 sites in Bartestree with significant constraints; and 9 sites in Bartestree that were rejected 	<ul style="list-style-type: none"> Air Biodiversity Climate factors Cultural heritage and the landscape Flora and fauna Population and human health Soil Water 	<p>The SHLAA assesses the potential availability of land for housing in Bartestree and Lugwardine Group</p> <p>The Bartestree and Lugwardine Group NDP should be informed by the findings of the SHLAA. However, as the assessments were undertaken 5 years ago it would be useful for a local site assessment exercise should be undertaken for these two villages to update the assessments and to identify any new sites.</p>

Plans and Programmes	Type of document	Date	Overview	Key message, target/objective/indicator	SEA topic(s) ¹	Implications for the NDP and SEA
Herefordshire Local Housing Market Assessment (LHMA)	Evidence	2013	Builds on an earlier Strategic Housing Market Assessment (SHMA) developed for Herefordshire and Shropshire. Its purpose is to inform the Local Plan's policies regarding housing need and demand (for market and affordable housing) within each of the 7 Housing Market Areas (HMAs) in Herefordshire between 2011 and 2031.	<p>Bartestree and Lugwardine Group fall within the Hereford HMA. Here, the study reveals that:</p> <ul style="list-style-type: none"> • 57% of households are unable to afford market housing. • There is an annual requirement for 98 affordable dwellings between 2011 to 2031. <p>The study identifies that by 2031 Hereford HMA, additional need for :</p> <ul style="list-style-type: none"> • 5440 market houses • 2929 affordable houses. <p>The study highlights that within the Hereford HMA the overall estimated housing need by size 2011-2031 is as follows: 1 Bed - 30.3%, 2 bed -34%, 3 bed – 32.3% 4 bed-3.5%.</p>	<ul style="list-style-type: none"> • Air • Biodiversity • Climate factors • Cultural heritage and the landscape • Flora and fauna • Population and human health • Soil • Water 	<p>The LHMA provides an indication of housing needs and affordability within the Hereford HMA.</p> <p>It provides evidence that could be used to inform policies or market and affordable housing requirements in the NDP.</p> <p>As Bartestree and Lugwardine falls within RA1 policy, development will be proportionate to the rural HMA (Housing Market Areas) characteristics.</p>

This document is copyright of Herefordshire Council, please contact the Neighbourhood Planning team if you wish to reuse it in whole or part.

Plans and Programmes	Type of document	Date	Overview	Key message, target/objective/indicator	SEA topic(s) ¹	Implications for the NDP and SEA
Herefordshire Local Housing Requirements Study	Evidence	2012	Technical assessment of the housing market and potential future local housing requirements which supports planning policy regarding the amount of growth, housing tenure and housing type needed within Herefordshire up to 2031.	<p>The delivery of 5,300 homes in the rural areas would:</p> <ul style="list-style-type: none"> • Support growth in the rural population by 6% • Increase the number of households by 14.5% <p>Forecasts also predict that growth in the population of the rural areas is likely to be primarily through an increase in those aged over 75.</p> <p>Moderate growth is expected in the 30-44 and 60-74 age brackets.</p> <p>The Local Housing Requirements Study therefore anticipates continuing improvements in life expectancy; significant growth is expected of those in their 80s, with the existing population in their 40s and 50s moving into retirement. As a consequence, the rural areas will face an increasing urgency to provide more 3 bedroom homes, with more 1 and 2 bed homes required in the affordable sector.</p>	<ul style="list-style-type: none"> • Air • Biodiversity • Climate factors • Cultural heritage and the landscape • Flora and fauna • Material assets • Population and human health • Soil • Water 	<p>This study provides an indication of housing requirements in the rural areas and the Hereford HMA.</p> <p>This evidence can be used to inform the content of the Bartestree and Lugwardine Group NDP, which could include policies to facilitate the provision of the right types of homes in the right places.</p>

This document is copyright of Herefordshire Council, please contact the Neighbourhood Planning team if you wish to reuse it in whole or part.

Plans and Programmes	Type of document	Date	Overview	Key message, target/objective/indicator	SEA topic(s) ¹	Implications for the NDP and SEA
Herefordshire Rural Housing Background Report	Evidence	2013	Provides the justification for the proportional housing growth targets outlined in the Core Strategy	The villages of Bartestree and Lugwardine Group are listed as RA1 settlements, which means they are considered a sustainable location for proportional growth of up to 18%.	<ul style="list-style-type: none"> • Air • Biodiversity • Climate factors • Cultural heritage and the landscape • Flora and fauna • Material assets • Population and human health • Soil • Water 	The Bartestree and Lugwardine Group NDP will need to be in conformity with the provisions of Policy RA1.

Plans and Programmes	Type of document	Date	Overview	Key message, target/objective/indicator	SEA topic(s) ¹	Implications for the NDP and SEA
Herefordshire Draft Gypsies and Travellers Assessment	Evidence	2013	Assesses the accommodation needs of Gypsies and Travellers across Herefordshire.	<p>Key findings from the survey of Gypsy and Traveller households in 2012 found that:</p> <ul style="list-style-type: none"> • 31% of households surveyed have some sort of accommodation need • Of the 17 households with an accommodation need, 7 had a requirement for at least one additional pitch • 10 households had a requirement for bricks and mortar housing • There is an additional requirement for 7 pitches and 9 units of Registered Social Landlord accommodation within Herefordshire. 	<ul style="list-style-type: none"> • Air • Biodiversity • Climate factors • Cultural heritage and the landscape • Flora and fauna • Material assets • Population and human health • Soil • Water 	The Bartestree and Lugwardine Group NDP must establish whether any of the need identified in this assessment falls within the neighbourhood area and make appropriate provisions for it.

Plans and Programmes	Type of document	Date	Overview	Key message, target/objective/indicator	SEA topic(s) ¹	Implications for the NDP and SEA
Building Biodiversity into the LDF	Evidence	2009	Provides the Council's Local Plan (Core Strategy) with evidence in respect of biodiversity and geodiversity, identifying both opportunities and constraints across Herefordshire.	<p>Identifies a range of semi-natural habitats and sites which are subject to local designations for their importance to nature conservation.</p> <p>This document provides useful information in respect of Bartestree Quarry which is a regionally important geological site. Lugwardine have a number of veteran trees.</p>	<ul style="list-style-type: none"> • Air • Biodiversity • Climate factors • Cultural heritage and the landscape • Flora and fauna • Material assets • Population and human health • Soil • Water 	There is a lack of information about rural areas which means it will be necessary to gather and assess existing biodiversity and geodiversity data, in order to ensure that the Bartestree and Lugwardine Group NDP can overcome any existing constraints and capitalise on opportunities to enhance habitats and their networks.

Plans and Programmes	Type of document	Date	Overview	Key message, target/objective/indicator	SEA topic(s) ¹	Implications for the NDP and SEA
Herefordshire Green Infrastructure Strategy	Evidence	2010	Develops a framework of natural and culturally important features and functions so that planning for a sustainable future is at the heart of planning within Herefordshire.	Establishes policies and principles for the protection and enhancement of those features and functions that contributes to the environment of Herefordshire across a range of scales.	<ul style="list-style-type: none"> • Air • Biodiversity • Climate factors • Cultural heritage and the landscape • Flora and fauna • Material assets • Population and human health • Soil • Water 	The study provides evidence that could be taken into account when preparing policies for the Bartestree and Lugwardine Group NDP.

Plans and Programmes	Type of document	Date	Overview	Key message, target/objective/indicator	SEA topic(s) ¹	Implications for the NDP and SEA
Renewable Energy Study	Evidence	2010	Assesses the energy demand within Herefordshire and the ability for the county to accommodate renewable and low carbon energy technologies.	<p>The total energy demand excluding transport for Herefordshire, at that point in time, was calculated as being:</p> <ul style="list-style-type: none"> • Electrical: 731 GWh/yr • Heat: 1,810 GWh/yr • Total: 2,541 GWh/yr <p>There is scope for all types of renewable energy production.</p>	<ul style="list-style-type: none"> • Air • Biodiversity • Climate factors • Cultural heritage and the landscape • Flora and fauna • Material assets • Population and human health • Soil • Water 	The study provides evidence that could be taken into account when preparing policies for the Bartestree and Lugwardine Group NDP.

Plans and Programmes	Type of document	Date	Overview	Key message, target/objective/indicator	SEA topic(s) ¹	Implications for the NDP and SEA
Herefordshire Playing Pitch Assessment	Evidence	2012	Produces a strategic framework, audit and assessment and needs analysis of outdoor sports pitches and facilities for Herefordshire. The document arises as a result of a recommendation in the Herefordshire and Worcestershire Sports Facilities Framework to develop local standards for playing fields and sports pitches throughout Herefordshire.	<p>The study updates components of the Herefordshire and Worcestershire Sports Facilities Framework 2010 such as updating population forecasts, setting local standards for synthetic turf pitches and grass playing fields within Herefordshire. It identifies any current gaps in provision, and looks forward to 2031 to assess what facilities are likely to be required by that date.</p> <p>In terms of Bartestree and Lugwardine Group parish itself, the study reveals that there is:</p> <ul style="list-style-type: none"> • 3.978 ha of playing pitch area • 3.2 ha of playing pitch area is secured community access. • Village hall playing field, senior football and cricket pitch in Bartestree are both rated as good, and changing facilities as excellent. • Lugwardine primary school pitch rated excellent. • 0.77 is not secured by community access (Cricket pitch) as it is not used by the community. 	<ul style="list-style-type: none"> • Biodiversity • Cultural heritage and the landscape • Flora and fauna • Material assets • Population and human health 	<p>The study provides evidence that could be taken into account when preparing policies for the Bartestree and Lugwardine Group NDP.</p> <p>Additional local evidence may be required to identify if there is a need for any secured playing pitch facilities within the Group Parish.</p>

This document is copyright of Herefordshire Council, please contact the Neighbourhood Planning team if you wish to reuse it in whole or part.

Plans and Programmes	Type of document	Date	Overview	Key message, target/objective/indicator	SEA topic(s) ¹	Implications for the NDP and SEA
Open Spaces Study	Evidence	2006	The 2006 space audit and assessment of need is a snapshot of the quality, quantity and distribution of open space across Herefordshire.	<p>The study reveals that within the Central Hereford Area, to which Bartestree and Lugwardine Group is a part, there is:</p> <ul style="list-style-type: none"> • Extensive over provision of parks, gardens and semi-natural green space • Under provision of amenity green space. • Average provision for children and young people. • Extensive under provision for outdoor sport. <p>Within Central Hereford the largest amount of land classified as parks and gardens within Herefordshire, and rated as excellent quality.</p>	<ul style="list-style-type: none"> • Biodiversity • Climate factors • Cultural heritage and the landscape • Flora and fauna • Material assets • Population and human health 	The open space audit and assessment of does not give a specific indication of open space shortfalls and surpluses in Bartestree and Lugwardine Group Parish.

This document is copyright of Herefordshire Council, please contact the Neighbourhood Planning team if you wish to reuse it in whole or part.

Plans and Programmes	Type of document	Date	Overview	Key message, target/objective/indicator	SEA topic(s) ¹	Implications for the NDP and SEA
Play Facilities Study	Evidence	2012	The Play Facilities Study 2012 updates the previous play facilities analysis under the Open Spaces Study 2006 and provides guidance and a framework for the development, delivery and continued sustainability of providing new and improved play facilities for children and young people in Herefordshire to 2031.	<p>In terms of Bartestree and Lugwardine Group itself, the study reveals that the play facilities.</p> <p>Bartestree Frome Park, rated as a medium priority. As the play value is poor, the equipment is over 10 years old and there is a low usage. The course of action is to keep as it is and identify community need for the future.</p> <p>Bartestree village hall course of action is to keep as it is.</p>	<ul style="list-style-type: none"> • Biodiversity • Climate factors • Cultural heritage and the landscape • Flora and fauna • Material assets • Population and human health 	The study provides evidence that could be taken into account when preparing policies for the Bartestree and Lugwardine Group NDP.

Plans and Programmes	Type of document	Date	Overview	Key message, target/objective/indicator	SEA topic(s) ¹	Implications for the NDP and SEA
Strategic Flood Risk Assessment (SFRA) and Water Cycle Study	Evidence	2009	<p>The Strategic Flood Risk Assessment (SFRA) provides a summary of flood risk in Herefordshire to inform the location of future development.</p> <p>The Water Cycle Study examines how water resources and water supply infrastructure, wastewater treatment, water quality, sewerage and flood risk could constrain growth across Herefordshire.</p>	<p>Bartestree and Lugwardine area is situated in the Lower Lugg catchment. 3.5% of properties in the Lower Lugg area have a high risk of fluvial flooding. It is in the top five of flood report catchments within the entire county.</p> <p>The Lower Lugg has a 33.4% standard run percentage run off by sub catchment. Potentially moderately unsuitable for infiltration source control.</p> <p>Lower Lugg has a very slow flood response (Tp-time to peak) time at around 11 + hours.</p> <p>The WCS identifies sites in the River Lugg catchment area are principally affected by water resources adverse impacts. It requires an holistic integrated approach to flood risk management.</p> <p>37 sites are further identified which relate to water resources adverse impacts, and of these 32 are within Herefordshire. The lower Lugg (Leominster to Hereford) and the lower Wye (Hereford to Monmouth) are principally affected, and also the River Wye at Hereford</p>	<ul style="list-style-type: none"> • Biodiversity • Climate factors • Material assets • Population and human health • Water 	<p>New development proposed through the Bartestree and Lugwardine Group NDP should be assessed against the capacity of local infrastructure.</p> <p>Up-to-date flood risk information should be gathered from the Environment Agency, in order to ensure that any flood risks are considered when preparing the Bartestree and Lugwardine Group NDP.</p>

This document is copyright of Herefordshire Council, please contact the Neighbourhood Planning team if you wish to reuse it in whole or part.

Plans and Programmes	Type of document	Date	Overview	Key message, target/objective/indicator	SEA topic(s) ¹	Implications for the NDP and SEA
Bartestree and Lugwardine Parish Plan	Evidence – local document	2014	Presents the broadly agreed wishes, likes, dislikes & intentions of members of the Parish. It recommends to the Parish Council what should be done & provides information for the Herefordshire Council on local housing development.	The residents of the Parish wish their views objective on the following topics to be taken into consideration: Housing & Planning; Transport , roads & road safety; Safer communities; Facilities , services & communications; Environment& sustainability; Sport , leisure & learning; Children & young persons	<ul style="list-style-type: none"> • Air • Biodiversity • Climate factors • Cultural, heritage and landscape • Flora and fauna • Material assets • Population & human health 	The Plan provides evidence that could be taken into account when preparing policies for the Bartestree and Lugwardine Group NDP.

Appendix A2 – Baseline information for Bartestree and Lugwardine Group

N.B. This is based on countywide baseline information with some additions relevant to Bartestree and Lugwardine Group (in red). Where no locally specific data is available for current status, trends and targets, only countywide data is reported. Any gaps in data may be filled following additional research.

SA Objective ¹	SA Theme	Proposed indicator	Current status	Trends	Targets	Issues and constraints	Baseline (information) source
SEA Topic covered by objective: <i>Biodiversity, flora and fauna</i>							
13. Value, maintain, restore and expand county biodiversity.	Natural environment	Net change in condition of SSSIs across Herefordshire.	<p>The 2011-2013 AMR does not contain updated conservation data.</p> <p>2010/11: 27% of Herefordshire's SSSI land was in favourable condition.</p> <p><i>There is no locally specific data available at present.</i></p>	<p>2006: 22% 2007: 22% 2008: 22% 2010: 24 %</p> <p>Proportion of SSSI land that was in unfavourable condition but recovering increased between 2010 and 2012 going from 41% to 65%. Proportion in unfavourable and declining condition had also decreased from 4% to 1%.</p>	<p>% of SSSI land in favourable condition (Increase)</p> <p>% of SSSI land in unfavourable condition but recovering (Increase)</p> <p>% of SSSI land in unfavourable condition and declining (Decrease)</p>	<p>Herefordshire's SSSIs are in extremely poor condition relative to England as whole, where 96.1% of all SSSI land was in favourable condition in April 2014.</p> <p>The proportion of SSSI in unfavourable condition but recovering is greater than England as a whole, where the figure currently stands at 58.6%.</p>	Understanding Herefordshire: An integrated needs assessment (June 2013).

¹ Derived from the Pre Submission Core Strategy Sustainability Appraisal Assessment (May 2014)

SA Objective ¹	SA Theme	Proposed indicator	Current status	Trends	Targets	Issues and constraints	Baseline (information) source
13. Value, maintain, restore and expand county biodiversity.	Natural environment	After use of mineral sites especially wildlife habitat creation	<i>There is no countywide or locally specific data available at present.</i>	-	No specific targets identified.	Should be monitored through AMR following the adoption of the Core Strategy, in line with SA recommendations.	-
13. Value, maintain, restore and expand county biodiversity.	Natural environment	Phosphate levels within the River Wye SAC and adjoining tributaries that receive increased phosphates from proportional growth.	Countywide data is available, this would apply to this Neighbourhood Area, as the parish falls inside the catchment area for the River Wye (including River Lugg) SAC.	N/A	N/A	N/A	N/A

SA Objective ¹	SA Theme	Proposed indicator	Current status	Trends	Targets	Issues and constraints	Baseline (information) source
13. Value, maintain, restore and expand county biodiversity.	Natural environment	Changes to protected habitats and impacts of species within the Herefordshire Local Biodiversity Action Plan.	<p>The 2011-2013 AMR does not contain updated conservation data.</p> <p>2010/11: 17 Habitat Action Plans and 14 Species Action Plans are currently in operation across Herefordshire.</p> <p><i>There is no locally specific data available at present.</i></p>	<p>There are no formal records of any unacceptable adverse impacts on habitats or protected species.</p> <p>Originally 156 Priority Species were identified for inclusion in Herefordshire's LBAP.</p> <p>Similarly Herefordshire's LBAP covered 23 habitats with Action Plans.</p>	No specific targets identified.	Herefordshire Biological Records Centre (HBRC) holds limited data on some individual sites.	Herefordshire Council AMR (2010/11)

SA Objective ¹	SA Theme	Proposed indicator	Current status	Trends	Targets	Issues and constraints	Baseline (information) source
13. Value, maintain, restore and expand county biodiversity.	Natural environment	Changes in the areas of designated nature conservation sites as a consequence of planning permission.	<p>Bartestree and Lugwardine Group has:</p> <p>SSSI: 2 SWS: 1 RIGS:1</p> <p>River Wye (Including River Lugg) SAC.</p> <p>There are no NNRs, SINC's and LNRs within the parish group.</p>	As of 2012, there had been no change in the areas of designated nature conservation sites as a consequence of the planning permissions granted.	To capitalise on opportunities to enhance the areas of value to nature conservation as much as possible.	Herefordshire Biological Records Centre (HBRC) holds limited data on some individual sites.	Herefordshire Council Initial Screening Report for the Neighbourhood Plan 2013
13. Value, maintain, restore and expand county biodiversity.	Natural environment	Proportion of local sites where positive conservation management has or is being implemented.	<i>There is no countywide or locally specific data available at present.</i>	-	No specific targets identified.	Should be monitored through AMR following the adoption of the Core Strategy, in line with SA recommendations.	-

SA Objective ¹	SA Theme	Proposed indicator	Current status	Trends	Targets	Issues and constraints	Baseline (information) source
SEA Topic covered by objectives: <i>Material assets</i>							
14. Use natural resources and energy more efficiently.	Resource consumption and climate change	Maintaining Herefordshire Council's County Site and Monuments Register.	Countywide data would be too large to incorporate into this template. Whilst there is no qualitative, locally specific data available at present, there are two scheduled monuments in Bartestree and Lugwardine Group according to the latest version of the register.	-	No specific targets identified, but need to ensure that the register is kept up to date.	Should be monitored through AMR following the adoption of the Core Strategy, in line with SA recommendations.	Herefordshire Environmental Records Register (search June 2014).
14. Use natural resources and energy more efficiently.	Resource consumption and climate change	Monitoring changes to historic landscapes.	<i>There is no countywide or locally specific data available at present.</i>	-	No specific targets identified.	Should be monitored through AMR following the adoption of the Core Strategy, in line with SA recommendations.	-

SA Objective ¹	SA Theme	Proposed indicator	Current status	Trends	Targets	Issues and constraints	Baseline (information) source
SEA Topic covered by objective: <i>Population, Biodiversity, Flora and Fauna</i>							
15. Value, protect, enhance and restore the landscape quality of Herefordshire, including its rural areas and open spaces.	Natural environment	Number of developments meeting and surpassing national design standards.	<i>There is no countywide or locally specific data available at present.</i>	-	No specific targets identified.	Should be monitored through AMR following the adoption of the Core Strategy, in line with SA recommendations.	-
15. Value, protect, enhance and restore the landscape quality of Herefordshire, including its rural areas and open spaces.	Natural environment	The need for, frequency and outcomes of planning enforcement investigations/ planning appeals concerning the aspects of local loss of locally important buildings within a conservation area.	Countywide data would be too large to incorporate into this template. There are no outstanding enforcement actions or appeals concerning locally important buildings within Bartestree and Lugwardine at present.	No historic records of any planning enforcement action or appeals concerning locally important buildings within the one conservation area.	To maintain current status.	Current status must be verified by Dvt Mgt and Enforcement Officers, but the NDP can help to avoid enforcement action and appeals during the plan period.	Council Dvt Mgt records (searched June 2014)
SEA Topic covered by objective: <i>Climatic Factors</i>							

SA Objective ¹	SA Theme	Proposed indicator	Current status	Trends	Targets	Issues and constraints	Baseline (information) source
16. Reduce Herefordshire's vulnerability to the impacts of climate change as well as its contribution to the problem.	Resource consumption and climate change.	Transport patronage by mode	<p>% of Herefordshire residents who travel to work by:</p> <p>Car: 70.1% Foot: 14.7% Bicycle: 4.3% Bus: 2% Train: 0.8% Motorbike: 0.8% Taxi: 0.3% Other: 7%</p> <p><i>There is no locally specific data available at present</i></p>	The number of people cycling or travelling by bus as the main form transport to get to work declined between 2001 and 2011 – across England and Wales there was little change in either. Walking or driving a car or van on the other hand increased.	To increase the take up of alternative modes to the private car.	There are a lack of transport options for many rural communities and therefore high car ownership and dependency – the last decade has seen a 15 per cent increase in household car ownership, although this is not reflected in traffic flows of recent years with volumes in Hereford City and wider county having decreased. The proportion of people working from home increased over the decade from 15 per cent in 2001 to 17 per cent in 2011.	2011 Census

SA Objective ¹	SA Theme	Proposed indicator	Current status	Trends	Targets	Issues and constraints	Baseline (information) source
16. Reduce Herefordshire's vulnerability to the impacts of climate change as well as its contribution to the problem.	Resource consumption and climate change.	Number of decentralised energy schemes granted permission.	<i>There is no countywide or locally specific data available at present.</i>	-	To contribute towards the national target.	Should be monitored through AMR following the adoption of the Core Strategy, in line with SA recommendations.	-

SA Objective ¹	SA Theme	Proposed indicator	Current status	Trends	Targets	Issues and constraints	Baseline (information) source
16. Reduce Herefordshire's vulnerability to the impacts of climate change as well as its contribution to the problem.	Resource consumption and climate	Total CO2 emissions per capita	<p>Latest figure dates back to 2010: 1.61 million tonnes (mtCO₂)</p> <p><i>There is no locally specific data available at present.</i></p>	<p>Between 2005 and 2010 Herefordshire's total and per capita carbon emission reduced by 7% and 8% respectively; while UK's total and per capita carbon emission reduced by 8% and 12% respectively within the same period. This trend hides an increase in emissions between 2009 and 2010 when total emissions in the county increased by 5% the same as across the UK (+5%).</p>	To reduce the overall carbon emissions.	CO ₂ emissions produced are decreasing.	Understanding Herefordshire: An integrated needs assessment (June 2013).

SA Objective ¹	SA Theme	Proposed indicator	Current status	Trends	Targets	Issues and constraints	Baseline (information) source
SEA Topic covered by objective: <i>Water</i>							
17. Reduce the risk of flooding and the resulting detriment to public wellbeing, the economy and the environment.	Natural environment	Number of planning permissions granted contrary to the advice of the Environment Agency on flood defence grounds.	The 2011-2013 AMR does not contain updated conservation data. 2010/11: None <i>There is no locally specific data available at present.</i>	There have been no approvals contrary to EA advice since reporting began in 2004.	To have no applications permitted contrary to EA advice.	None identified.	Herefordshire Council AMR (2010/11)
SEA Topic covered by objective: <i>Water, air, soil, material assets</i>							
18. Minimise local and global pollution and protect or enhance environmental resources.	Natural environment	Agricultural land usage by quality	<i>There is no countywide or locally specific data available at present.</i>	-	No specific targets identified.	Should be monitored through AMR following the adoption of the Core Strategy, in line with SA recommendations.	-

SA Objective ¹	SA Theme	Proposed indicator	Current status	Trends	Targets	Issues and constraints	Baseline (information) source
18. Minimise local and global pollution and protect or enhance environmental resources.	Natural environment	Percentage of river length assessed as good or very good chemical quality	Latest figure dates back to 2005: 84% <i>There is no locally specific data available at present.</i>	Figure steadily improved before going into decline: Herefordshire 1999 85.9%, 2000 89.5%, 2001 92.2%, 2002 91.8%	To ensure that rivers meet their conservation objectives and do not fall below the required standard of quality.	None identified.	The State of Herefordshire Report (2007)
SEA Topic covered by objective: <i>Soil</i>							
19. Ensure integrated, efficient and balanced land use.	Built environment	Percentage of all new development completed on previously developed land.	2010/11: 67% 2011-13: 57% <i>There is no locally specific data available at present.</i>	Completions on PDL had risen to 71% by 2005.	To increase the number of homes built on PDL in line with the provisions of national planning policy.	The number of brownfield completions has fallen slightly in recent years, though this is probably the offshoot of tough market conditions.	Herefordshire Council AMR (2010/11) and (2011-2013)
19. Ensure integrated, efficient and balanced land use.	Built environment	Housing densities in urban and rural areas	<i>There is no countywide or locally specific data available at present.</i>	-	No specific targets identified.	Should be monitored through AMR following the adoption of the Core Strategy, in line with SA recommendations.	-

SA Objective ¹	SA Theme	Proposed indicator	Current status	Trends	Targets	Issues and constraints	Baseline (information) source
19. Ensure integrated, efficient and balanced land use.	Built environment	Level of development in urban areas compared to rural.	<p><i>There is no countywide or locally specific data available at present.</i></p> <p>This indicator would not be applicable to rural NDPs.</p>	N/A	N/A	N/A	N/A
SEA Topic covered by objective: <i>Cultural heritage</i>							
20. Value, protect and enhance the character and built quality of settlements and neighbourhoods and the county's historic environment and cultural heritage.	Built environment	Number and percentage of listed buildings and Scheduled Ancient Monuments on Buildings at Risk Register (English Heritage).	<p>Up-to-date countywide information will be presented in the next AMR and which is due to be published in 2014. However, this data would be too large to incorporate into this template.</p> <p>There are numerous listed buildings within the parish and two SAMs. None are currently recorded in the Buildings at Risk Register.</p>	There were 70 heritage assets in Herefordshire that were considered to be at high risk and included in the Heritage at Risk Register 2011.	To maintain current status.	None of Bartestree and Lugwardine Group listed buildings or SAMs are considered to be at risk at present.	Buildings at Risk Register (English Heritage; search June 2014)

SA Objective ¹	SA Theme	Proposed indicator	Current status	Trends	Targets	Issues and constraints	Baseline (information) source
20. Value, protect and enhance the character and built quality of settlements and neighbourhoods and the county's historic environment and cultural heritage.	Built environment	The need for, frequency and outcomes of planning enforcement investigations/ planning appeals concerning the aspects of local loss of locally important buildings within a conservation area.	Countywide data would be too large to incorporate into this template. There are no outstanding enforcement actions or appeals concerning locally important buildings within Bartestree and Lugwardine at present.	No historic records of any planning enforcement action or appeals concerning locally important buildings within the one conservation area.	To maintain current status.	Current status must be verified by Dvt Mgt and Enforcement Officers, but the NDP can help to avoid enforcement action and appeals during the plan period.	Council Dvt Mgt records (searched June 2014)

Appendix A3 – Environmental issues identified from Bartestree and Lugwardine Group baseline

These environmental issues are the same as most of those identified for the Herefordshire Core Strategy¹

SEA Topic		Environmental issue	SA objectives
1	Air	High reliance upon the private car causing high levels of air pollution and in Hereford in particular	Objective 16
		Need to reduce carbon emissions by encouraging alternative modes of travel.	
2	Biodiversity	Habitats and species of national, regional and local importance are under pressure from the adaptation and diversification of farming and forestry employment.	Objectives 13 & 15
		Minimise loss of biodiversity and expand opportunities for wildlife everywhere.	
3	Climatic factors	Reduce greenhouse gas emissions through planning, design and build.	Objective 16
4	Cultural heritage	Bartestree and Lugwardine group Group has two Scheduled Ancient Monuments and numerous listed buildings, all of which require ongoing protection and many in need of high levels of maintenance.	Objective 20
5	Flora and fauna	Conserve and enhance the character and quality of historic landscapes, including all types of natural flora and fauna.	Objective 15
6	Material assets	How the countryside can continue to be managed in an economically, socially and environmentally beneficial way in the face of continuing pressures on traditional farming.	Objectives 14 & 18
7	Population	Minimise energy waste through good designs, which help to reduce energy consumption and maximise efficiency.	Objective 15
		Need to avoid enforcement investigations/action concerning locally important buildings and those within conservation areas in particular.	
8	Soil	Promoting development of previously developed land and buildings as opposed to greenfield sites or agricultural land of the highest quality.	Objectives 18 & 19
9	Water	Issues relating to availability of resources, foul drainage, pollution, and abstraction in a county which supports water dependent biodiversity of international and national importance, given the predicted climate change consequences for water availability and demanding projections for new housing.	Objectives 17 & 18
		Steady decline in the chemical quality of rivers over the last 10 years.	

¹ Derived from the Pre-submission Core Strategy Sustainability Appraisal Assessment (May 2014) and LDF General Scoping Report (June 2007)

Template A4: SEA Framework

SEA Scoping Stage A, Task A4 - SEA Framework SEA Objectives, Indicators, Targets

Parish Council Name: Bartestree and Lugewardine group

Neighbourhood Development Plan Name: Bartestree and Lugewardine group Plan

Date completed: June 2014

SEA Topics	SEA Objective (These objectives are strategic overall SEA objectives, which you may need to refine, based on your local evidence, to make them locally relevant)	Sub-objectives / Appraisal Questions (Will the option/proposal/site...) (These sub-objectives are strategic overall SEA sub-objectives, which you may need to refine, based on your local evidence, to make them locally relevant)	Indicators (Insert indicators, based on evidence, to test and monitor whether your NDP proposals and policies are working. These should relate to the sub-objectives and be taken from Template A2)	Targets (Insert targets, based on evidence, to monitor whether the NDP proposals and policies are working. These should relate to the sub-objectives indicators and be taken from Template A2)
Nature Conservation (Biodiversity, flora and fauna)	To maintain and enhance nature conservation (biodiversity, flora and fauna)	<ul style="list-style-type: none">• Conserve and enhance natural / semi-natural habitats• Conserve and enhance species diversity• Avoid harm to protected species• Avoid damage to wildlife and geological sites designated for their conservation interest• Maintain and enhance woodland cover and management• Maintain biodiversity, avoiding irreversible losses• Restore the full range of characteristic habitats and species to viable levels• Reverse the long term decline in farmland birds• Ensure the sustainable management of key wildlife sites and the ecological processes on which they depend• Provide opportunities for people to come into contact with and appreciate wildlife and wild place	<p>Net change in condition of SSSIs across Herefordshire.</p> <p>After use of mineral sites especially wildlife habitat creation</p> <p>Changes to protected habitats and impacts of species within the Herefordshire Local Biodiversity Action Plan.</p>	<p>% of SSSI land in favourable condition (Increase)</p> <p>% of SSSI land in unfavourable condition but recovering (Increase)</p> <p>% of SSSI land in unfavourable condition and declining (Decrease)</p> <p>No specific targets identified.</p> <p>No specific targets identified.</p>

SEA Topics	SEA Objective (These objectives are strategic overall SEA objectives, which you may need to refine, based on your local evidence, to make them locally relevant)	Sub-objectives / Appraisal Questions (Will the option/proposal/site...) (These sub-objectives are strategic overall SEA sub-objectives, which you may need to refine, based on your local evidence, to make them locally relevant)	Indicators (Insert indicators, based on evidence, to test and monitor whether your NDP proposals and policies are working. These should relate to the sub-objectives and be taken from Template A2)	Targets (Insert targets, based on evidence, to monitor whether the NDP proposals and policies are working. These should relate to the sub-objectives indicators and be taken from Template A2)
Landscape	<p>To maintain and enhance the quality of landscapes and townscapes</p> <p>To improve quality of surroundings</p>	<ul style="list-style-type: none"> • Protect and enhance the landscape everywhere and particularly in designated areas • Value and protect diversity and local distinctiveness • Improve landscape and ecological quality and character of the countryside • Improve the quantity and quality of publicly accessible open space • Improve satisfaction of people with their neighbourhoods as places to live • Decrease litter and graffiti in towns and countryside 	<p>Changes in the areas of designated nature conservation sites as a consequence of planning permission.</p> <p>Proportion of local sites where positive conservation management has or is being implemented.</p> <p>Monitoring changes to historic landscapes.</p>	<p>To capitalise on opportunities to enhance the areas of value to nature conservation as much as possible.</p> <p>No specific targets identified.</p> <p>No specific targets identified.</p>
Heritage	To conserve and where appropriate enhance the historic environment and culture heritage	<ul style="list-style-type: none"> • Preserve historic buildings, archaeological sites and other culturally important features in both urban and rural settings • Create places, spaces and buildings that work well, wear well and look well 	<p>The need for, frequency and outcomes of planning enforcement investigations/ planning appeals concerning the aspects of local loss of locally important buildings within a conservation area.</p> <p>Number and percentage of listed buildings and Scheduled Ancient Monuments on Buildings at Risk Register (English Heritage).</p> <p>Maintaining Herefordshire Council's County Site and Monuments Register.</p>	<p>To maintain current status.</p> <p>To maintain current status</p> <p>No specific targets identified, but need to ensure that the register is kept up to date.</p>

SEA Topics	SEA Objective (These objectives are strategic overall SEA objectives, which you may need to refine, based on your local evidence, to make them locally relevant)	Sub-objectives / Appraisal Questions (Will the option/proposal/site...) (These sub-objectives are strategic overall SEA sub-objectives, which you may need to refine, based on your local evidence, to make them locally relevant)	Indicators (<i>Insert indicators, based on evidence, to test and monitor whether your NDP proposals and policies are working. These should relate to the sub-objectives and be taken from Template A2</i>)	Targets (<i>Insert targets, based on evidence, to monitor whether the NDP proposals and policies are working. These should relate to the sub-objectives indicators and be taken from Template A2</i>)
Air and Climate	<p>To improve air quality</p> <p>To reduce the effect of traffic on the environment</p> <p>To reduce contributions to climate change</p> <p>To reduce vulnerability to climate change</p>	<ul style="list-style-type: none"> • Limit air pollution, including greenhouse gas emissions and ozone depleting substances • Improve air quality • Reduce the need to travel • Reduce traffic volumes and congestion • Reduce road traffic accidents • Reduce commuting and improve accessibility by public transport walking and cycling • Increase proportion of journeys using modes other than the car • Reduce the effects of heavy goods traffic (freight) on people and the environment • Reduce respiratory illnesses • Reduce energy consumption and improve energy efficiency • Increase proportion of energy needs being met from renewable sources • Reduce vulnerability to the effects of climate change e.g. flooding, disruption to travel by extreme weather 	<p>Transport patronage by mode</p> <p>Number of decentralised energy schemes granted permission.</p> <p>Total CO2 emissions per capita</p>	<p>To increase the take up of alternative modes to the private car.</p> <p>To contribute towards the national target.</p> <p>To reduce the overall carbon emissions.</p>

SEA Topics	SEA Objective (These objectives are strategic overall SEA objectives, which you may need to refine, based on your local evidence, to make them locally relevant)	Sub-objectives / Appraisal Questions (Will the option/proposal/site...) (These sub-objectives are strategic overall SEA sub-objectives, which you may need to refine, based on your local evidence, to make them locally relevant)	Indicators (Insert indicators, based on evidence, to test and monitor whether your NDP proposals and policies are working. These should relate to the sub-objectives and be taken from Template A2)	Targets (Insert targets, based on evidence, to monitor whether the NDP proposals and policies are working. These should relate to the sub-objectives indicators and be taken from Template A2)
Water	<p>To improve water quality</p> <p>To provide for sustainable sources of water supply</p> <p>To avoid, reduce and manage flood risk</p>	<ul style="list-style-type: none"> • Improve the quality of inland water: rivers, lakes and ponds • Limit water pollution • Maintain water abstraction, run-off and recharge within carrying capacity (including future capacity) • Reduce water consumption and improve water efficiency • Minimise the risk of flooding from rivers and watercourses to people and property • Minimise risk of subsidence • Reduce risk of damage to property from storm events 	<p>Number of planning permissions granted contrary to the advice of the Environment Agency on flood defence grounds.</p> <p>Percentage of river length assessed as good or very good chemical quality</p> <p>Phosphate levels within the River Wye SAC and adjoining tributaries that receive increased phosphates from proportional growth.</p>	<p>To have no applications permitted contrary to EA advice.</p> <p>To ensure that rivers meet their conservation objectives and do not fall below the required standard of quality.</p> <p>To meet the targets set out in the Nutrient Management Plan (2014)</p>
Soil	<p>To conserve soil resources and quality</p> <p>To minimise the production</p>	<ul style="list-style-type: none"> • Reduce contamination, and safeguard soil quality and quantity • Minimise loss of greenfield land / maximise development on brownfield land • Reduce the amount of derelict and underused land • Minimise waste generation and increase re-use or recovery through recycling, composting or energy recovery • Maximise the amount of waste diverted from landfill through recovery and recycling • Reduce household waste going to landfill • Reduce hazardous waste • Reduce waste in the construction of developments 	<p>Percentage of all new development completed on previously developed land.</p>	<p>To increase the number of homes built on PDL in line with the provisions of national planning policy.</p>

SEA Topics	SEA Objective (These objectives are strategic overall SEA objectives, which you may need to refine, based on your local evidence, to make them locally relevant)	Sub-objectives / Appraisal Questions (Will the option/proposal/site...) (These sub-objectives are strategic overall SEA sub-objectives, which you may need to refine, based on your local evidence, to make them locally relevant)	Indicators (<i>Insert indicators, based on evidence, to test and monitor whether your NDP proposals and policies are working. These should relate to the sub-objectives and be taken from Template A2</i>)	Targets (<i>Insert targets, based on evidence, to monitor whether the NDP proposals and policies are working. These should relate to the sub-objectives indicators and be taken from Template A2</i>)
Population and Human Health	To improve health of the population To reduce crime and nuisance	<ul style="list-style-type: none"> • Create conditions to improve health and reduce health inequalities in those areas most affected • Promote healthy living and lifestyles • Reduce death rates • Protect and enhance human health • Reduce and prevent crime, reduce fear of crime • Decrease noise and vibration • Increase opportunities for indoor recreation and exercise 	Number of developments meeting and surpassing national design standards.	No specific targets identified.
Material Assets	To conserve natural and manmade resources	<ul style="list-style-type: none"> • Protect built assets, property, infrastructure and services • Increase proportion of building materials from sustainable sources • Promote the development of a sustainable settlement pattern and physical infrastructure • Promote the efficient use of land and resources • Reduce consumption of materials and resources 	<p>Agricultural land usage by quality</p> <p>Housing densities in urban and rural areas</p> <p>Level of development in urban areas compared to rural.</p>	<p>No specific targets identified.</p> <p>No specific targets identified.</p> <p>N/A</p>

Initial Habitat Regulations Assessment and Strategic Environmental Assessment Screening Notification

The Neighbourhood Planning (General) Regulation 2012 (Reg. 32)

Conservation of Habitats and Species Regulations 2010 (d)

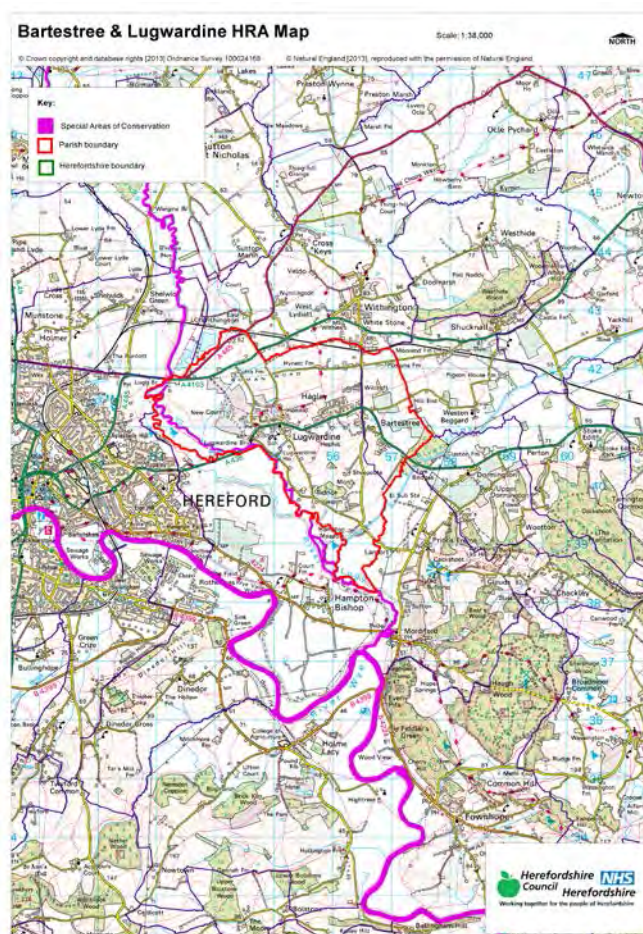
Neighbourhood Area:	Bartestree & Lugwardine Neighbourhood Area
Parish Council:	Bartestree and Lugwardine GPC
Neighbourhood Area Designation Date:	6 th September 2012

Introduction

This Initial Habitat Regulations Assessment (HRA) and Strategic Environmental Assessment (SEA) Screening has been undertaken to assess whether any European sites exist within or in proximity to the neighbourhood area which could be affected by any future proposals or policies.

Through continual engagement the outcomes of any required assessments will help to ensure that proposed developments will not lead to Likely Significant Effects upon a European Site or cause adverse impacts upon other environmental assets, such as the built historic or local natural environment.

HRA Initial Screening: Map showing relationship of Neighbourhood Area with European Sites (not to scale)



Initial HRA Screening

River Wye (including the River Lugg) SAC:

Does the Neighbourhood Area have the River Wye (including the River Lugg) in or next to its boundary?	Y	The River Lugg runs along the border of Lugwardine Parish. The River Wye is about 1km away from the Parish
Does the Neighbourhood Area have any watercourses?	Y	As well as the River Lugg running along the border of Lugwardine Parish, the River Frome runs through the southern part of the Parish. There are also several streams/brooks in the Parish
Is the Neighbourhood Area in the hydrological catchment of the River Wye (including the River Lugg) SAC?	Y	The Group Parish is within the River Lugg hydrological catchment
If yes above, does the Neighbourhood Area have mains drainage to deal with foul sewage?	Y	There is mains drainage within Hereford City

Downton Gorge SAC:

Appendix 1

Is the Neighbourhood Area within 10km of Downton Gorge SAC?	N	Downton Gorge is 32.1km away from the Parish
---	---	--

River Clun SAC:

Does the Neighbourhood Area include: Border Group Parish Council or Leintwardine Group Parish Council?	N	River Clun does not border the Parish
--	---	---------------------------------------

Usk Bat Sites SAC:

Is the Neighbourhood Area within 10km of the SAC boundary?	N	Usk Bat Sites are 42.1km away from the Parish
--	---	---

Wye Valley & Forest of Dean Bat Sites SAC:

Is the Neighbourhood Area within 10km of any of the individual sites that make up the Wye Valley & Forest of Dean Bat Sites?	N	Wye Valley and Forest of Dean Bat Sites are 22.1km away from the Parish
--	---	---

Wye Valley Woodlands SAC:

Is the Neighbourhood Area within 10km of any of the individual sites that make up the Wye Valley Woodlands Site?	N	Wye Valley Woodlands are 22.6km away from the Parish
--	---	--

HRA Conclusion:

The assessment above highlights that the following European Sites will need to be taken into account in the future Neighbourhood Development Plan for the Bartestree and Lugwardine Neighbourhood Area and a Full HRA Screening will be required.

European Site

(List only those which are relevant from above)

River Wye (including the River Lugg) SAC

Appendix 1
Strategic Environmental Assessment Initial Screening for nature conservation landscape and heritage features

The following environmental features are within or in general proximity to the Bartestree & Lugwardine Neighbourhood Area and would need to be taken into account within a Strategic Environmental Assessment. In addition, the NDP will also need to consider the other SEA topics set out in Guidance Note 9a to ensure that the plan does not cause adverse impacts.

SEA features	Total	Explanation	SEA required
Air Quality Management Areas	0	There are no AQMA's within the Parish	N
Ancient Woodland	1	Tidnor Wood	Y
Areas of Archaeological Interest	0	There are no AAI's within the Parish	N
Areas of Outstanding Natural Beauty	0	There are NO AONB's within the Parish	N
Conservation Areas	1	Lugwardine village is a Conservation Area	Y
European Sites	1	River Lugg SAC runs along the border of Lugwardine Parish	Y
Flood Areas		Flood Zones 2 and 3 in the south and west of the Parish, and also along the north ending just north of Hynett Farm	Y
Listed Buildings	Numerous	There are numerous listed buildings throughout the Parish	Y
Local Sites (SWS/SINCs/RIGS)	1 RIGS 1 SWS	RIGS: Bartestree Quarry (Lowes Hill) SWS: Lugg Meadows	Y
Long distance footpaths/trails	0	No Long distance footpaths run through the Parish	N
Mineral Reserves	4	2 sites in the west, 1 central, and 1 to the east of the Parish	Y
National Nature Reserve	0	There are No NNR's within the Parish	N
Registered & unregistered parks and gardens	6 Unregistered	New Court Lugwardine, Lugwardine Court, Hagley Park/Court, Bartestree Court, Longworth, Old Sufton	Y
Scheduled Ancient Monuments	2	Moated site 60m south west of Old Court Farm Hemhill, Lugg Bridge	Y
Sites of Special Scientific Interest	2	Lugg and Hampton Meadows, River Lugg	Y

Decision Notification:

The initial screening highlights that the Neighbourhood Development Plan for the Bartestree and Lugwardine Neighbourhood Area:

- a) Will require further environmental assessment for Habitat Regulations Assessment and Strategic Environmental Assessment.

Assessment date: 16/05/2013

Assessed by: James Latham

Appendix 1: European Sites

The table below provides the name of each European Site, which has been screened in for the purposes of neighbourhood planning in Herefordshire; includes their site features of integrity; and vulnerability data. This is based on the sites individual features of integrity and their vulnerabilities, which could include distance criteria. This has been used in identifying which parishes are likely to require a full HRA Screening of their future Neighbourhood Development Plan, to establish if their plan might have Likely Significant Effects on a European Site.

Downton Gorge
Site Features: <i>Tilio-Acerion</i> forests of slopes, screes and ravines
Vulnerability data: 10km for air quality associated with poultry units or other intensive agricultural practices.

River Clun
Site Features: Freshwater pearl mussel <i>Margaritifera margaritifera</i>
Vulnerability data: Water quality is important to maintain the site feature. Parishes either side of the River Clun will be affected.

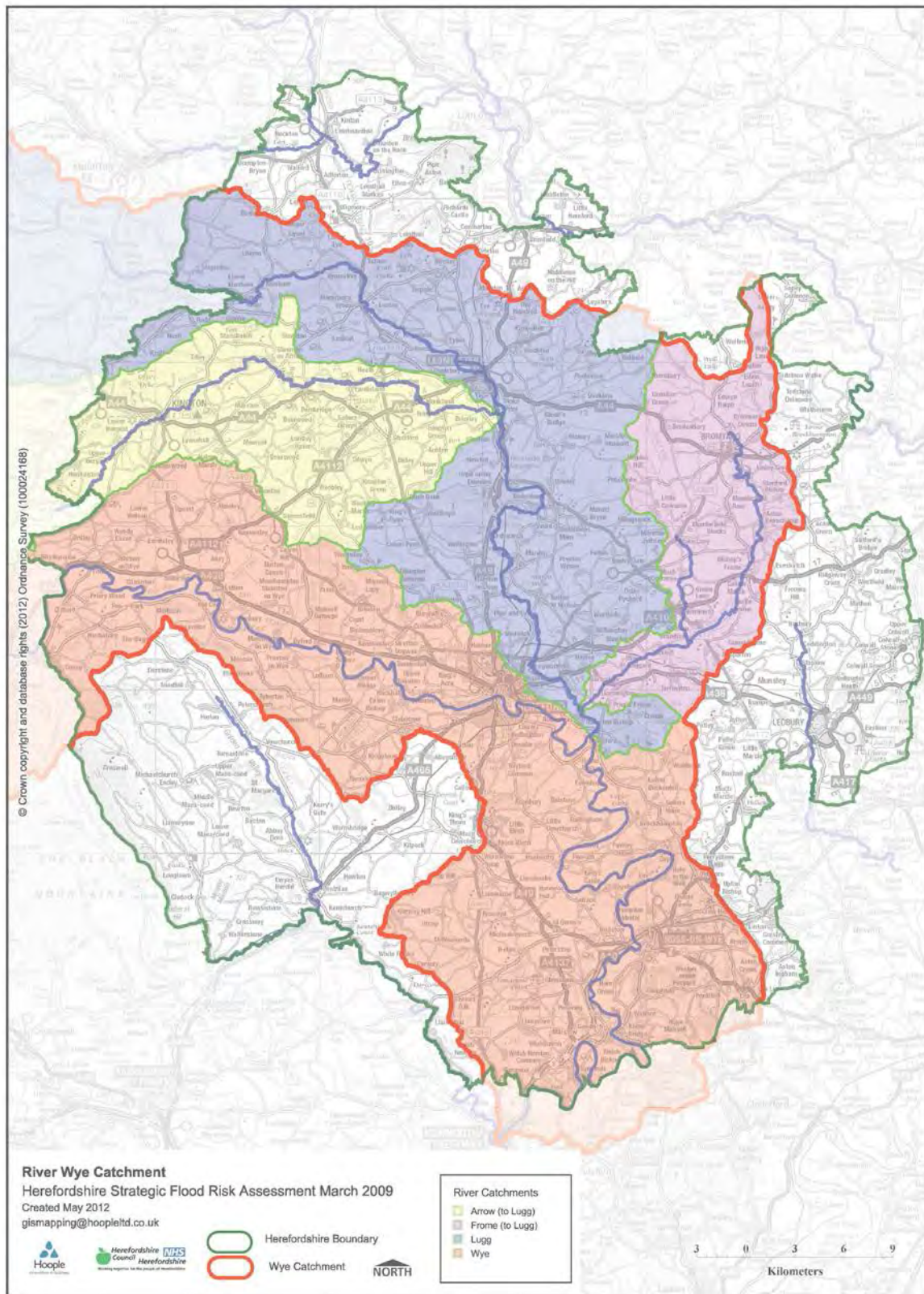
River Wye
Site Features: Water courses of plain to montane levels with the <i>Ranunculion fluitantis</i> and <i>Callitriche-Batrachion</i> vegetation. Transition mires and quaking bogs. White-clawed (or Atlantic Stream) crayfish <i>Austropotamobius pallipes</i> . Sea lamprey <i>Petromyzon marinus</i> . Brook lamprey <i>Lampetra planeri</i> . River lamprey <i>Lampetra fluviatilis</i> . Twaite shad <i>Alosa fallax</i> . Atlantic salmon <i>Salmo salar</i> . Bullhead <i>Cottus gobio</i> . Otter <i>Lutra lutra</i> . Allis shad <i>Alosa alosa</i>
Vulnerability data: Proximity: Developments should not be within 100m of the designated bank. Some developments beyond 100m may also have impacts based on proximity and these issues should be addressed where possible when developing NDP policy and choosing site allocations. Water Quality: Within the whole catchment of the River Wye, which includes the River Lugg, mains drainage issues with regards to water quality are being resolved through the Core Strategy / Local Plan and development of a Nutrient Management Plan. Welsh Water should be consulted to ensure that the proposed growth will be within the limit of their consents. Otters: "An otter will occupy a 'home range', which on fresh waters usually includes a stretch of river as well as associated tributary streams, ditches, ponds, lakes and woodland. The size of a home range depends largely on the availability of food and shelter, and the presence of neighbouring otters. On rivers, a male's home range may be up to 40km or more of watercourse and associated areas; females have smaller ranges (roughly half the size) and favour quieter locations for breeding, such as tributary streams. Otters without an established home range are known as 'transients'. They are mostly juveniles looking for a territory of their own, or adults that have been pushed out of their territories. Transient otters may use an area for a short while, but they will move on if conditions are not suitable or if they are driven away by resident otters. Transients will have been important in extending the range of otters, but they are very difficult to identify from field signs. Within a home range an otter may use many resting sites. These include above-ground shelters, such as stands of scrub or areas of rank grass, and underground 'holts' – for example, cavities under tree roots and dry drainage pipes." (Source: EA website: http://www.environmentagency.gov.uk/static/documents/Business/Otters_the_facts.pdf accessed 09/04/2013)

Usk Bat Site
Site Features: Annex I habitats present as a qualifying feature, but not a primary reason for site selection: European dry heaths, Degraded raised bogs still capable of natural regeneration, Blanket bogs, Calcareous rocky slopes with chasmophytic vegetation, Caves not open to the public, <i>Tilio-Acerion</i> forests of slopes, screes and ravines. Annex II species of primary reason for site selection: Lesser horseshoe bat <i>Rhinolophus hipposideros</i> , UK population 5%, although it is suggested this is an underestimate.
Vulnerability data: Lesser Horseshoe bats are known to migrate between 5km and 10km between their summer and winter roosts. The Lesser Horseshoe Bat is vulnerable to disturbance; light pollution; and habitat loss. Check with the planning ecologist for other issues.

Wye Valley and Forest of Dean Bat Sites
Site Features: Annex II species that are a primary reason for site selection: Lesser horseshoe bat <i>Rhinolophus hipposideros</i> . Greater horseshoe bat <i>Rhinolophus ferrumequinum</i>
Vulnerability data: Lesser Horseshoe bats are known to migrate between 5km and 10km between their summer and winter roosts. The Lesser Horseshoe Bat is vulnerable to disturbance; light pollution; and habitat loss. Check with the planning ecologist for other issues.
Greater Horseshoe bats are known to migrate between 20-30km between their summer and winter roosts.
NDPs closest to the European Site will need to consider: Woodland habitat buffer. Lesser Horseshoe Bat: Old buildings; woodland locations; sheltered valleys, extensive deciduous woods or dense scrub, close to roost sites. In areas of fragmented habitats, linear habitats such as hedgerows are important corridors. Vulnerable to loss or disturbance of both summer and winter roosts and removal of linear habitat. Greater Horseshoe Bat: Large buildings, pasture, edge of mixed deciduous woodland and hedgerows. Mixed land-use especially south-facing slopes, favours beetles, moths and insects they feed on. During the winter they depend on caves, abandoned mines and other underground sites for undisturbed hibernation. A system/series of sites required. Vulnerable to loss of insect food supply, due to insecticide use, changing farming practices and loss of broad-leaved tree-cover and loss / disturbance of underground roosts sites.

Wye Valley Woodlands
Site Features: Annex I habitats that are a primary reason for site selection: Beech forests <i>Asperulo-Fagetum</i> , <i>Tilio-Acerion</i> forests of slopes, screes and ravines, <i>Taxus baccata</i> woods of the British Isles. Annex II species present as a qualifying feature, but not a primary reason for site selection: Lesser horseshoe bat <i>Rhinolophus hipposideros</i> , 51-100 residents
Vulnerability data: Lesser Horseshoe bats are known to migrate between 5km and 10km between their summer and winter roosts. The Lesser Horseshoe Bat is vulnerable to disturbance; light pollution; and habitat loss. Check with the planning ecologist for other issues. NDPs closest to the European Site will need to consider: Woodland habitat buffer. Lesser Horseshoe Bat: Old buildings; woodland locations; sheltered valleys, extensive deciduous woods or dense scrub, close to roost sites. In areas of fragmented habitats, linear habitats such as hedgerows are important corridors. Vulnerable to loss or disturbance of both summer and winter roosts and removal of linear habitat.

Appendix 2: Wye Catchment Map

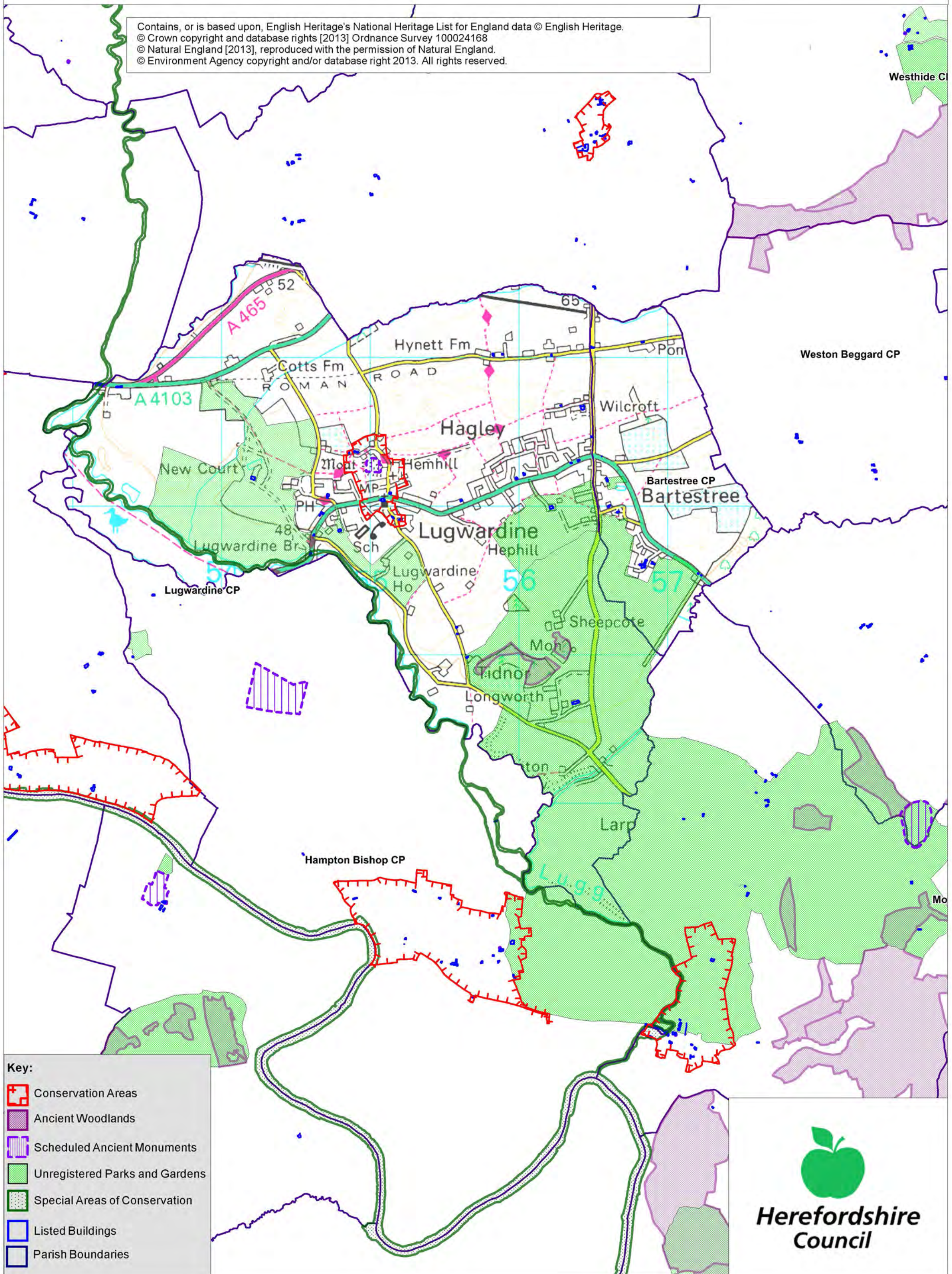


Bartestree & Lugwardine SEA Map 1

Scale: 1:42,000



Contains, or is based upon, English Heritage's National Heritage List for England data © English Heritage.
© Crown copyright and database rights [2013] Ordnance Survey 100024168
© Natural England [2013], reproduced with the permission of Natural England.
© Environment Agency copyright and/or database right 2013. All rights reserved.



Key:

- Conservation Areas
- Ancient Woodlands
- Scheduled Ancient Monuments
- Unregistered Parks and Gardens
- Special Areas of Conservation
- Listed Buildings
- Parish Boundaries

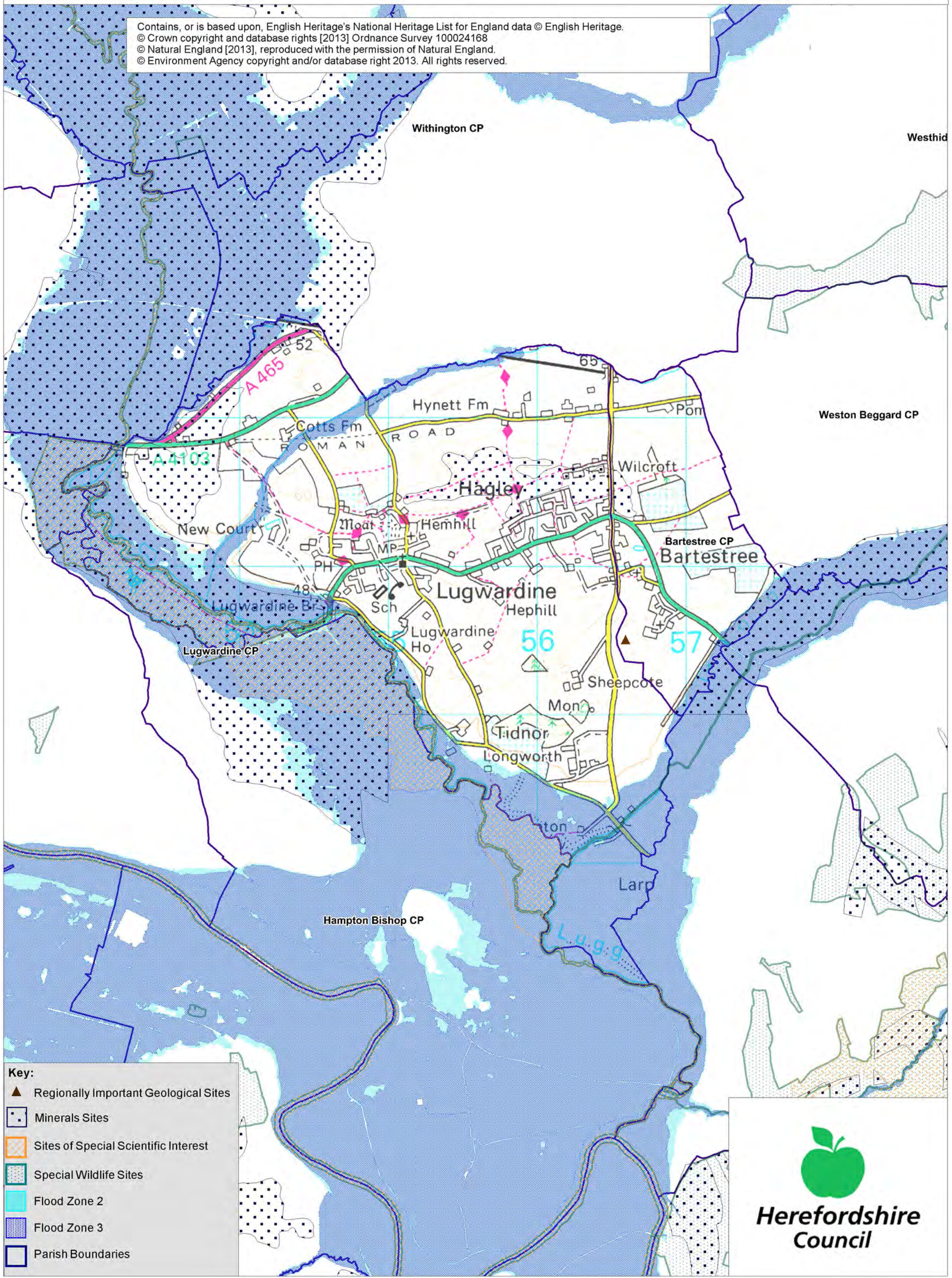
**Herefordshire
Council**

Bartestree & Lugwardine SEA Map 2

Scale: 1:22,000



Contains, or is based upon, English Heritage's National Heritage List for England data © English Heritage.
© Crown copyright and database rights [2013] Ordnance Survey 100024168
© Natural England [2013], reproduced with the permission of Natural England.
© Environment Agency copyright and/or database right 2013. All rights reserved.



- Key:**
- Regionally Important Geological Sites
 - Minerals Sites
 - Sites of Special Scientific Interest
 - Special Wildlife Sites
 - Flood Zone 2
 - Flood Zone 3
 - Parish Boundaries

