

# Hereford School Capital Investment

Briefing and Discussion 7<sup>th</sup> July 2015.

# Meeting overview

- Purpose of meeting

- Discuss what the data might be telling us. (data still being verified )
- Examine what the future demand for school places is likely to be and where.
- Give ideas about how we can shape the strategy, get agreement and to a position where significant investment is made.

- The Agenda

1. The story so far
2. Some county level findings
3. Local issues
4. Consultation and initial thoughts

# Where are we in the process....



- The schools estate is made up of 100 Assets including:-
  - 78 Primary school
  - 15 Secondary schools
  - 1 all through school
  - 4 Special school
  - 1 PRU ( two sites)

Asset category / Type	VA	VC	Academy	Federation all through	Community	Trust	Free
Primary Schools	20	12	16	1	27	1	1
Secondary Schools	2		9		3		1
Special			2		2		
PRU					1 (two sites)		
All through School			1				

# Across Herefordshire - 1

- 88% of primary pupils attend a good or outstanding school ( *82% national and 80% across the west midlands* )
- 83% of secondary pupils attend a good or outstanding school ( *70% national and 71% west midlands* )



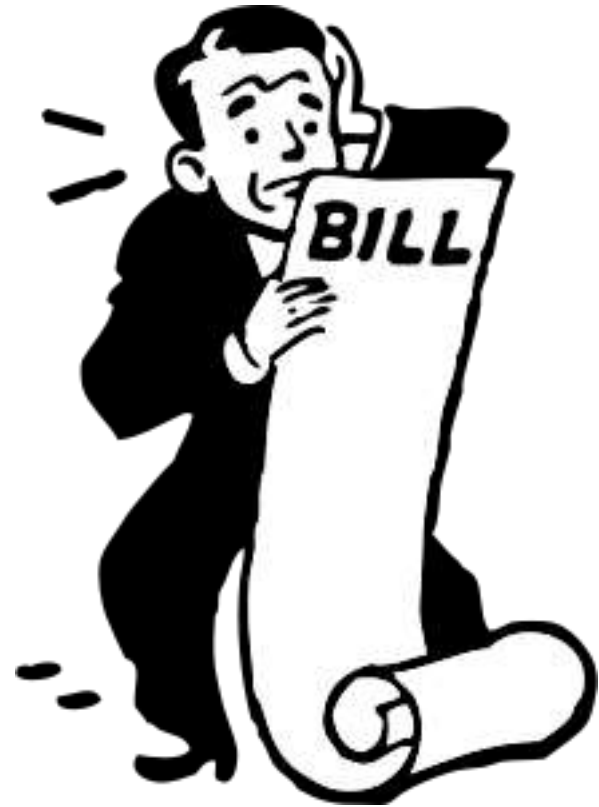
# Across Herefordshire - 2

- 1500 or 12% primary surplus places.
- 1100 or 11% secondary surplus places
- The spare places are not always where parents want them.
- On average 50% of children are not going to their nearest or catchment school.



# Across Herefordshire - 3

- The known LA maintenance bill is circa £8.5m
- Bill to make schools compliant circa £30m



# Previous funding sources seem to have dried up





But .....



# Schools serving Hereford

Schools that draw 10%+ of their roll from defined Hereford city region

## Primary Schools

Broadlands Primary School

Burghill Community Primary School

Clehonger CE Primary School

Hampton Dene Primary School

Holmer Primary Academy

Little Dewchurch CE Primary School

Lord Scudamore Academy

Lugwardine Primary Academy

Madley Primary School

Marden Primary Academy

Marlbrook Primary School

Mordiford CE Primary School

Much Birch CE Primary School

Our Lady's RC Primary School

Riverside Primary School

St Francis Xavier's RC Primary School

St James' CE Primary School

St Martin's Primary School

St Mary's CE Primary School, Credenhill

St Mary's CE Primary School, Fownhope

St Paul's CE Primary Academy

St Thomas Cantilupe CE Primary School

Stretton Sugwas CE Academy

Sutton Primary Academy

Trinity Primary School

Wellington Primary School

Withington Primary School

# Schools serving Hereford

Schools that draw 10%+ of their roll from defined Hereford city region

## Secondary Schools

Aylestone Business and Enterprise College

Bishop of Hereford's Bluecoat School

St Mary's RC High School

The Hereford Academy

Whitecross High School and Specialist  
Sports College

The Robert Owen Vocational School

## Special Schools

Barrs Court School

Blackmarston School

The Brookfield School and Specialist  
College

## PRU's

St David's Centre

# Future growth - county level

- 16,000 new homes across Herefordshire by 2031
- The expected average yield
  - Primary school ratio 0.17
  - Secondary school ratio 0.13
  - Special school places 1.2% of pupil population



Area
Hereford
Leominster
Ross
Ledbury
Bromyard
Kington
Rural

Proposed Housing Total
5830
2235
842
822
564
282
5137

Forecast Primary Children
1014
389
146
143
98
48
894

Forecast Secondary children
773
296
112
109
75
37
681



# Future growth – Hereford

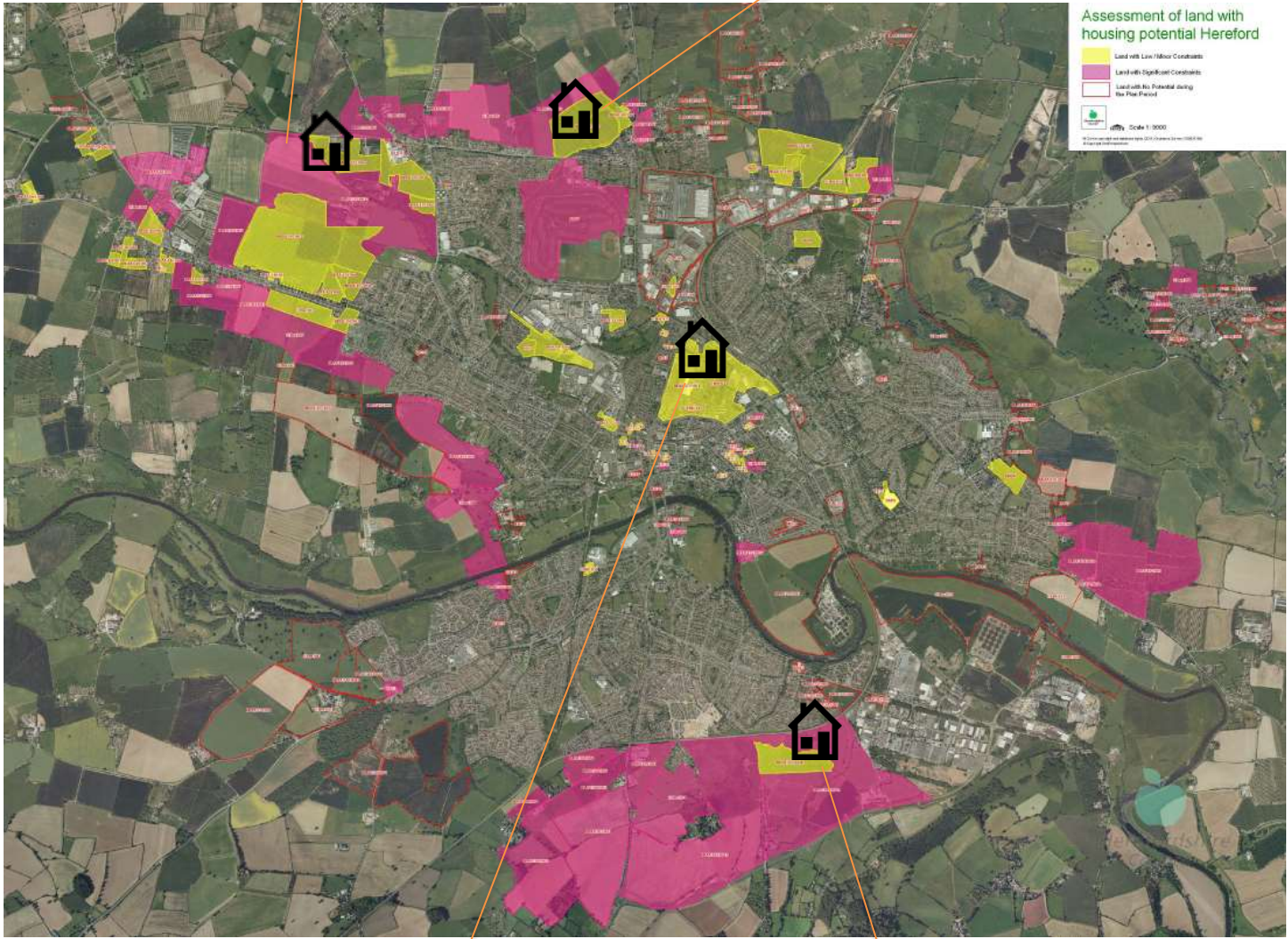
- *Hereford 5830 plus new homes by 2031*
  - *1014 primary places*
  - *773 secondary places*
  - *21 special school places*



# Proposed housing development for Hereford

Hereford Three Elms Site  
1000 New homes

Holmer west site  
500 New homes



City centre Site  
608 New homes

Lower Bullingham Site  
1000 New homes

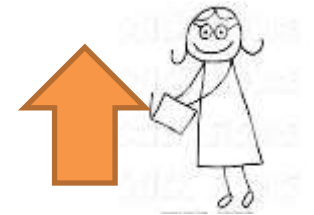
1022 new homes as  
existing commitments



5830 proposed for  
the Hereford area  
by 2031



Total Primary School  
children set to  
increase by around  
1014 children by  
2031



Total Secondary  
School children set to  
increase by around  
773 children by 2031

# Hereford – Headlines

- 27 Primary schools serve the Hereford area (27% of the school estate), 6 secondary (6% of the school estate) 3 Specials (3% of the school estate) & 1 PRU (1% of the school estate)
- £6.5M maintenance for 19 LA maintained schools over the next 5 years including backlog
- Average 94% building compliance.
- 20 out of 37 schools are located on recommended or larger sites than the standard criteria noted within BB103.
- Based upon current PAN we have provision for 7021 primary pupils.
- Based upon current PAN we have provision for 4810 Secondary pupils.
- 4 Schools have achieved an outstanding ofsted rating, 24 schools have a good rating , 3 require improvement , 1 is inadequate & 5 not available

School	School Capacity	Number on Roll Aut 2014	NOR Spr 2014	NOR Spr 2013	NOR Spr 2012	NOR Spr 2011
Broadlands Primary School	315	135	156	166	171	168
Burghill Community Primary School	105	105	96	98	94	90
Clelonger CE Primary School	147	116	119	117	116	117
Hampton Dene Primary School	210	242	246	250	245	238
Holmer Primary Academy	420	364	349	326	303	300
Little Dewchurch CE Primary School	63	71	71	62	54	43
Lord Scudamore Academy	616	583	578	571	574	568
Lugwardine Primary Academy	210	195	191	209	192	171
Madley Primary School	182	207	212	204	194	195
Marden Primary Academy	119	75	87	86	85	84
Marlbrook Primary School	420	445	421	423	403	405
Mordiford CE Primary School	147	154	150	144	136	132
Much Birch CE Primary School	210	197	196	189	180	188
Our Lady's RC Primary School	210	192	194	178	173	185
Riverside Primary School	630	482	438	406	372	324



School	School Capacity	Number on Roll Aut 2014	NOR Spr 2014	NOR Spr 2013	NOR Spr 2012	NOR Spr 2011
St Francis Xavier's RC Primary School	210	213	211	202	209	202
St James' CE Primary School	210	208	200	184	184	196
St Martin's Primary School	420	323	344	320	321	319
St Mary's CE Primary School	210	192	198	199	188	177
St Mary's CE Primary School	105	139	131	132	120	105
St Paul's CE Primary Academy	420	425	424	412	408	421
St Thomas Cantilupe CE Primary School	210	164	174	190	187	194
Stretton Sugwas CE Academy	120	121	115	110	105	103
Sutton Primary Academy	105	121	114	87	89	80
Trinity Primary School	588	562	567	547	535	544
Wellington Primary School	105	77	86	94	104	103
Withington Primary School	105	53	55	56	57	60
<b>Total</b>	<b>6812</b>	<b>6161</b>	<b>6123</b>	<b>5962</b>	<b>5799</b>	<b>5712</b>

School	School Capacity	Number on Roll Aut 2014	NOR Spr 2014	NOR Spr 2013	NOR Spr 2012	NOR Spr 2011
Aylestone Business and Enterprise College	750	441	478	551	605	689
Bishop of Hereford's Bluecoat School	1180	1116	1137	1163	1168	1180
St Mary's RC High School	750	743	740	720	720	712
The Hereford Academy	1120	884	829	748	767	731
The Robert Owen Vocational School	-	-	-	-	-	-
Whitecross High School and Specialist Sports College	900	841	829	844	875	897
<b>Total</b>	<b>2770</b>	<b>2468</b>	<b>2398</b>	<b>2312</b>	<b>2362</b>	<b>2340</b>

School	Published admission number	2014 first preference applications	2014 % first preference applications	2013 % first preference applications	2012 % first preference applications	2011 % first preference applications
Broadlands Primary School	45	11	24%	27%	66%	48%
Burghill Community Primary School	15	20	133%	80%	86%	106%
Clehonger CE Primary School	21	8	38%	62%	76%	85%
Hampton Dene Primary School	30	38	127%	153%	126%	133%
Holmer Primary Academy	60	47	78%	97%	103%	96%
Little Dewchurch CE Primary School	9	9	100%	89%	66%	44%
Lord Scudamore Academy	88	92	105%	101%	104%	136%
Lugwardine Primary Academy	30	17	57%	93%	63%	83%
Madley Primary School	26	36	138%	123%	111%	92%
Marden Primary Academy	17	3	18%	71%	47%	58%
Marlbrook Primary School	60	105	175%	155%	133%	136%
Mordiford CE Primary School	21	25	119%	119%	114%	166%
Much Birch CE Primary School	30	40	133%	103%	93%	120%
Our Lady's RC Primary School	30	40	133%	133%	100%	100%
Riverside Primary School	90	69	77%	70%	82%	64%

School	Published admission number	2014 first preference applications	2014 % first preference applications	2013 % first preference applications	2012 % first preference applications	2011 % first preference applications
St Francis Xavier's RC Primary School	30	24	80%	97%	80%	113%
St James' CE Primary School	30	29	97%	123%	96%	93%
St Martin's Primary School	60	34	57%	48%	65%	83%
St Mary's CE Primary School	30	31	103%	83%	120%	96%
St Mary's CE Primary School	15	23	153%	113%	153%	86%
St Paul's CE Primary Academy	60	56	93%	117%	93%	86%
St Thomas Cantilupe CE Primary School	30	16	53%	120%	103%	80%
Stretton Sugwas CE Academy	20	23	115%	115%	133%	100%
Sutton Primary Academy	15	20	133%	127%	126%	120%
Trinity Primary School	84	82	98%	76%	116%	84%
Wellington Primary School	15	10	67%	80%	93%	73%
Withington Primary School	15	7	47%	60%	100%	73%

	Published admission number	2014 first preference applications	2014 % first preference applications	2013 % first preference applications	2012 % first preference applications	2011 % first preference applications
Aylestone Business and Enterprise College	150	73	49%	58%	69%	64%
Bishop of Hereford's Bluecoat School	236	213	90%	82%	96%	96%
St Mary's RC High School	150	172	127%	119%	119%	114%
The Hereford Academy	180	171	95%	76%	62%	73%
The Robert Owen Vocational School	-	-	-	-	-	-
Whitecross High School and Specialist Sports College	180	198	110%	79%	86%	108%

School	Number of children for whom this school is the nearest	Number of children for whom it is the nearest who are actually attending the school	Percentage of NOR for whom it is nearest school	NOR Aut 2014
Broadlands Primary School	166	58	43%	135
Burghill Community Primary School	73	46	44%	105
Clehonger CE Primary School	123	47	41%	116
Hampton Dene Primary School	388	122	50%	242
Holmer Primary Academy	135	64	18%	364
Little Dewchurch CE Primary School	43	16	23%	71
Lord Scudamore Academy	376	225	39%	583
Lugwardine Primary Academy	162	99	51%	195
Madley Primary School	108	85	41%	207
Marden Primary Academy	133	47	63%	75
Marlbrook Primary School	1075	346	78%	445
Mordiford CE Primary School	101	71	46%	154
Much Birch CE Primary School	127	72	37%	197
Our Lady's RC Primary School	397	32	17%	192
Riverside Primary School	428	127	26%	482

School	Number of children for whom this school is the nearest	Number of children for whom it is the nearest who are actually attending the school	Percentage of NOR for whom it is nearest school	NOR Aut 2014
St Francis Xavier's RC Primary School	417	91	43%	213
St James' CE Primary School	208	110	53%	208
St Martin's Primary School	205	87	27%	323
St Mary's CE Primary School	254	152	79%	192
St Mary's CE Primary School	88	57	41%	139
St Paul's CE Primary Academy	35	17	4%	425
St Thomas Cantilupe CE Primary School	161	38	23%	164
Stretton Sugwas CE Academy	73	32	26%	121
Sutton Primary Academy	70	49	41%	121
Trinity Primary School	740	405	74%	562
Wellington Primary School	81	37	48%	77
Withington Primary School	136	41	77%	53

School	Number of children for whom this school is the nearest	Number of children for whom it is the nearest who are actually attending the school	Percentage of NOR for whom it is nearest school	NOR Aut 2014
Aylestone Business and Enterprise College	604	176	40%	441
Bishop of Hereford's Bluecoat School	565	387	35%	1116
St Mary's RC High School	441	153	21%	743
The Hereford Academy	1368	734	83%	884
The Robert Owen Vocational School	-	-	-	-
Whitecross High School and Specialist Sports College	1079	606	72%	841



School	Maintenance cost exceeds 30% of asset	PAN for compliance comparison	Overall Gross site compliance	Overall building compliance
Broadlands Primary School	No	-	-	-
Burghill Community Primary School	Data held by school	15	Over	Under
Clehonger CE Primary School	Yes	20	Under	Under
Hampton Dene Primary School	No	30	Over	Over
Holmer Primary Academy	Data held by school	60	Under	Under
Little Dewchurch CE Primary School	Yes	10	Under	Under
Lord Scudamore Academy	Data held by school	90	Under	Under
Lugwardine Primary Academy	Data held by school	30	Under	Under
Madley Primary School	Yes	30	Under	Under
Marden Primary Academy	Data held by school	20	Over	Under
Marlbrook Primary School	No	60	Over	Over
Mordiford CE Primary School	Data held by school	20	Over	Under
Much Birch CE Primary School	Yes	30	Under	Under
Our Lady's RC Primary School	Yes	30	Over	Over
Riverside Primary School	Not Available	90	Over	Over

School	Maintenance cost exceeds 30% of asset	PAN for compliance comparison	Overall Gross site compliance	Overall building compliance
St Francis Xavier's RC Primary School	No	30	Over	Under
St James' CE Primary School	No	30	Under	Under
St Martin's Primary School	Yes	60	Over	Over
St Mary's CE Primary School	No	30	Over	Under
St Mary's CE Primary School	No	15	Over	Over
St Paul's CE Primary Academy	Data held by school	60	Over	Over
St Thomas Cantilupe CE Primary School	Data held by school	30	Under	Over
Stretton Sugwas CE Academy	Data held by school	20	Over	Under
Sutton Primary Academy	Data held by school	15	Over	Over
Trinity Primary School	No	90	Under	Under
Wellington Primary School	No	15	Over	Over
Withington Primary School	No	15	Over	Under

School	Maintenance cost exceeds 30% of asset	PAN for compliance comparison	Overall Gross site compliance	Overall building compliance
Aylestone Business and Enterprise College	NO	-	Over	Over
Bishop of Hereford's Bluecoat School	Yes	-	Over	Over
St Mary's RC High School	Yes	-	Over	Over
The Hereford Academy	Data held by school	-	Under	Under
The Robert Owen Vocational School	Data held by school	-	-	-
Whitecross High School and Specialist Sports College	Data held by school	-	Over	Over

# Next steps

- Development of ideas
- Acceptance of the principles
- Options
- A report setting out a strategy November 2015