

HEREFORDSHIRE PUBLIC REALM CONTRACT 2025/26

ANNEX 10 – NETWORK REHABILITATION AND MAINTENANCE



ANNUAL PLAN FINAL APPROVAL

BBLP: Anthony Agate

HC: Bruce Evans

SERVICE OVERVIEW

SERVICE SUMMARY

Network rehabilitation and maintenance includes routine and reactive network rehabilitation and maintenance services such as emergency incidence response and highway maintenance. This includes repairs to carriageways, footways and routine maintenance to kerbs and road signs. Reactive (make safe) repairs will be made to safety fences, pedestrian fencing and barriers.

COMMISSIONED WORKS

The annex shall deliver all activities and works as set out in Schedule 4 – Service Information Annex 14 - Service Information Network Rehabilitation Maintenance V1.2 unless deemed out of scope as detailed below

“Annex 14 Original Service Outcomes:

As set out in the Highways Maintenance plan, the *Provider* is to:

- Maintain and improve the condition and safety of carriageways appropriate to hierarchy and usage.
- Maintain and improve the condition and safety of footways/cycleways appropriate to Hierarchy and usage.
- Maintain safety fencing, parapet fencing, handrails, visibility fencing and other barriers in a safe condition to protect the safety of the highway user.
- Keep all signs legible and visible as far as possible at all times in relation to road use and traffic speeds
- *Maintain and improve the drainage network so water is removed from the surface of highways as quickly as possible to maintain safety and minimise flooding. - **Delivered under Annex 7***

THE SERVICE

HIGH LEVEL SERVICE DELIVERY

SERVICE	RESOURCES	DIRECT/SUB CONTRACT	DELIVERY	2025 26 Costs
Defect Maintenance				
Supervision & commercial	Operations Managers, Public Realm Supervisors and Operational Support	Direct	Effective supervision and management	£3,512,450.69
Depots	Yardman & Fleet	Direct	Depots, Staff, Fleet, Fuel, vehicles	
Multitask	2 x Work Gangs	Direct and Sub-contract	Delivery of Cat 1 & 2 Re-active defects on the Network	
Hotbox Team	1 x Gang	Direct and Sub-contract	Delivery of Cat 1 & 2 Re-active carriageway repairs	
Mastic Asphalt	1 x Gang	Direct and Sub-contract	Delivery of Reactive Repairs	
Cold Lay	3 x Gangs	Direct and Sub-contract	Delivery of Reactive Repairs	
Traffic Signage Maintenance	Utilisation of Multitask Works Gangs	Direct and Sub-contract	Delivery of Cat 1 and 2 Re-active repairs or replacement of safety critical highway signage	

SERVICE	RESOURCES	DIRECT/SUB CONTRACT	DELIVERY	2025 26 Costs
OOH Response	1 x OOH Supervisor, 2 x Ops North and 2 x Ops South	Direct and Sub-contract	Provision of emergency response and severe weather teams to Re-active defects outside core hours	£239,092.33
Spray Injection Repairs 10months	1 x Work Gang	Direct and Sub-contract	Delivery of spray injection carriageway Re-active and program repairs	£254,224.29
Patching Gang	Subcontract Managed by BBLP Staff	Sub-contract	Delivering repairs designed to reduce future defect likelihood and where appropriate, feed future surface dressing programmes.	£250,000
Improving Lining Assets Following Safety Inspection	Subcontract Managed by BBLP Staff	Sub-contract	Programme developed to manage risk on the network highlighted through safety inspection feedback throughout the year.	£219,660
Minor maintenance	1 x Work Gang	Direct and Sub-contract	Delivery of Minor work across the county to follow up on make-safe repairs by re-active gangs	£250,000
OOH Storm Events	As required	Direct and Sub-contract	Named Weather Events resourcing based on risk and severity of warning	No provision made.
Reactive Lining	1 x supervisor and subcontract	Direct and Sub-contract	Reactive lining repairs	£219,660.00

IN AND OUT OF SCOPE ACTIVITIES

The activities or works are out of scope:

Service	Reason
Emergency response (incidents affecting Public Realm)	<p>Commissioned Service Scope</p> <ul style="list-style-type: none"> • Response to weather emergencies, river flooding & flooding from inadequate drainage • Road traffic accidents • Subsistence / heave affecting the network • Offensive graffiti • Traffic Management / Road Closure response due to structural collapse that has an immediate effect on the public realm network • Make safe response to any impact or indirect incident on the public realm that poses a safety risk to the public or network • Fuel and chemical spillages • Green Claims – (See Appendix A) • Daily site checks for legal compliance <p>OUT OF SCOPE</p> <ul style="list-style-type: none"> • Structural collapse not affecting Public Realm network • Diversions on closures in named weather events. • Services above current basic structure – Named Weather events will require specific resource and WBS codes to be raised and captured to ensure accurate forecasting and network resilience and safety.
CAT 1 Response	<p>Commissioned Service Scope</p> <ul style="list-style-type: none"> • Carriageway Repairs • Footway Repairs • Emergency Minor Maintenance Repairs to street furniture or attendance to make safe • Attendance for repair or make safe to any safety issues affecting the public realm <p>OUT OF SCOPE</p> <ul style="list-style-type: none"> • Replacement of Street Furniture were deemed out of scope for minor maintenance repair. (Delivered through Annex 3)

Service	Reason
Traffic Signage	<p>Commissioned Service Scope</p> <ul style="list-style-type: none"> • Maintenance, Repair or Replacement as identified in the HMP as the following: <ul style="list-style-type: none"> ○ Traffic Signage identified as a safety issue or potential safety issue following a risk-based assessment in line with the HMP ○ Separation of potential traffic conflicts ○ Risks identified from route delineation in darkness or bad weather ○ Accident Cluster Sites <p>OUT OF SCOPE</p> <ul style="list-style-type: none"> • Any traffic sign not defined as a safety issue or potential safety issue following a risk-based assessment in line with HMP • Name Plates- (See Cat 2c Process in appendices) • Bus stop Flags
Potholes (Carriageway and Footway repairs)	<p>Commissioned Service Scope</p> <ul style="list-style-type: none"> • Repairs requiring intervention as set out in the HMP, following inspection • Find and fix • Spray Injection programme • Repairs to protect the network from significant further deterioration where it's evident intervention will prolong the assets usage as identified by the Senior Highway Engineer • Make Safe Repair to Cats Eye defects <p>OUT OF SCOPE</p> <ul style="list-style-type: none"> • Anything not defined as a safety issue or potential safety issue following risk-based assessment in line with HMP • Replacement of Cats eyes on the network (Delivered through Annex 3)
Safety barrier repairs	<p>Commissioned Service Scope</p> <ul style="list-style-type: none"> • Minor maintenance and make safe repairs to safety barriers <p>OUT OF SCOPE</p> <ul style="list-style-type: none"> • Safety Barrier replacement (Delivered through Annex 3)

Service	Reason
Street Furniture Maintenance	<p>Commissioned Service Scope</p> <ul style="list-style-type: none"> • Replacement or repair of existing Verge Markers • Replacement or repair of existing Roadside Visibility Bollards • Make safe repairs to Vis fencing and Pedestrian Barriers • Make safe or Minor Maintenance repairs to Highway Asset Street Furniture • Make safe or Minor Maintenance repair to Bus Stops that pose a safety risk to either public or network <p>OUT OF SCOPE</p> <ul style="list-style-type: none"> • Bus Stop Replacement • Bus Stop Cleaning
Edge of Carriageway	<p>Commissioned Service Scope</p> <ul style="list-style-type: none"> • Repairs requiring intervention as set out in the HMP, following inspection <p>OUT OF SCOPE</p> <ul style="list-style-type: none"> • Any repair not defined as a safety issue or potential safety issue following risk-based assessment in line with HMP
Cattle Grids	<p>Commissioned Service Scope</p> <ul style="list-style-type: none"> • Minor maintenance and make safe repairs to Cattle Grids <p>OUT OF SCOPE</p> <ul style="list-style-type: none"> • Cattle Grid Replacement (Delivered through Annex 3)
Traffic Mirror Sites	<p>Commissioned Service Scope</p> <ul style="list-style-type: none"> • Maintenance of HC owned authorised traffic mirror sites <p>OUT OF SCOPE</p> <ul style="list-style-type: none"> • Maintenance of any traffic mirror not owned or authorised by HC

Service	Reason
Footway Scraping / Siding out	<p>Commissioned Service Scope</p> <ul style="list-style-type: none"> Footways requiring intervention as set out in the HMP, following inspection <p>OUT OF SCOPE</p> <ul style="list-style-type: none"> Any works not defined as a safety issue or potential safety issue following a risk-based assessment in line with the HMP
Minor Works	<p>Commissioned Service Scope</p> <ul style="list-style-type: none"> Drainage Repairs – As identified in program of works Fencing / Guard Railing – As identified in program of works Signage Repair / Replacement – As identified in program of works Street Furniture Repair / Replacement – As identified in program of works Kerbs / Slabs / Pavers – As identified in program of works <p>OUT OF SCOPE</p> <ul style="list-style-type: none"> Major works outside of commissioned scope above – Appropriate scheme should be raised through Annex 3 to be forward programmed accordingly
PROW	Out Of Scope – all service support requests in line with with non-commissioned services.

RISK INTERVENTION

As stated in the risk register, there may be times during seasonal peaks when it is not possible to keep up with the levels in which defects are raised and completed. During these periods there may be a requirement to increase resource by utilising our supply chain or change/reduce the specification to works in order to retain and ensure a safe network.

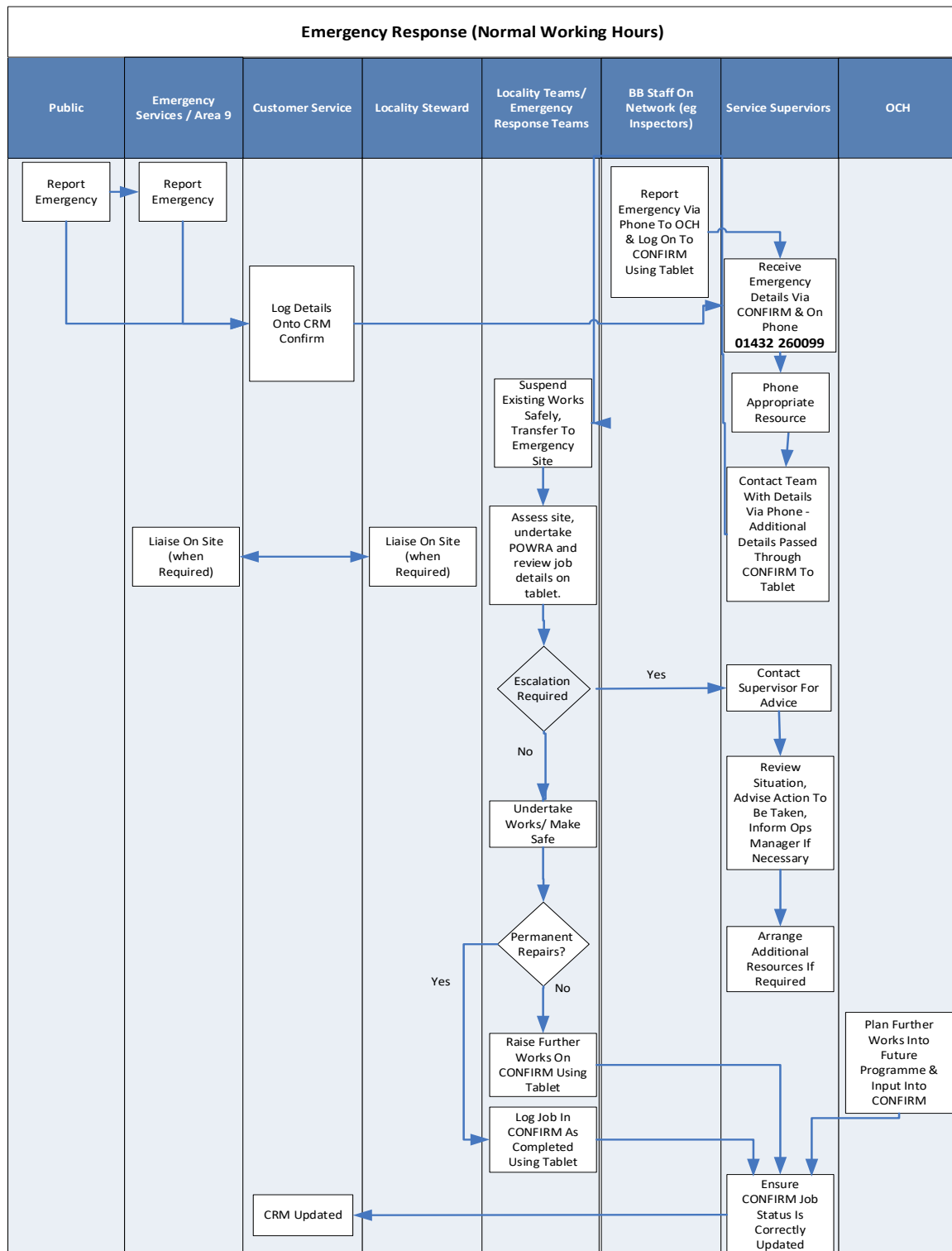
The current level for intervention will be set and reviewed annually. Prior to any intervention action taken, BBLP will ensure early warnings are raised to Herefordshire Council.

The current intervention level sits at 1600 outstanding Carriageway Defects across the county for a sustained 7-day period.

APPENDICES

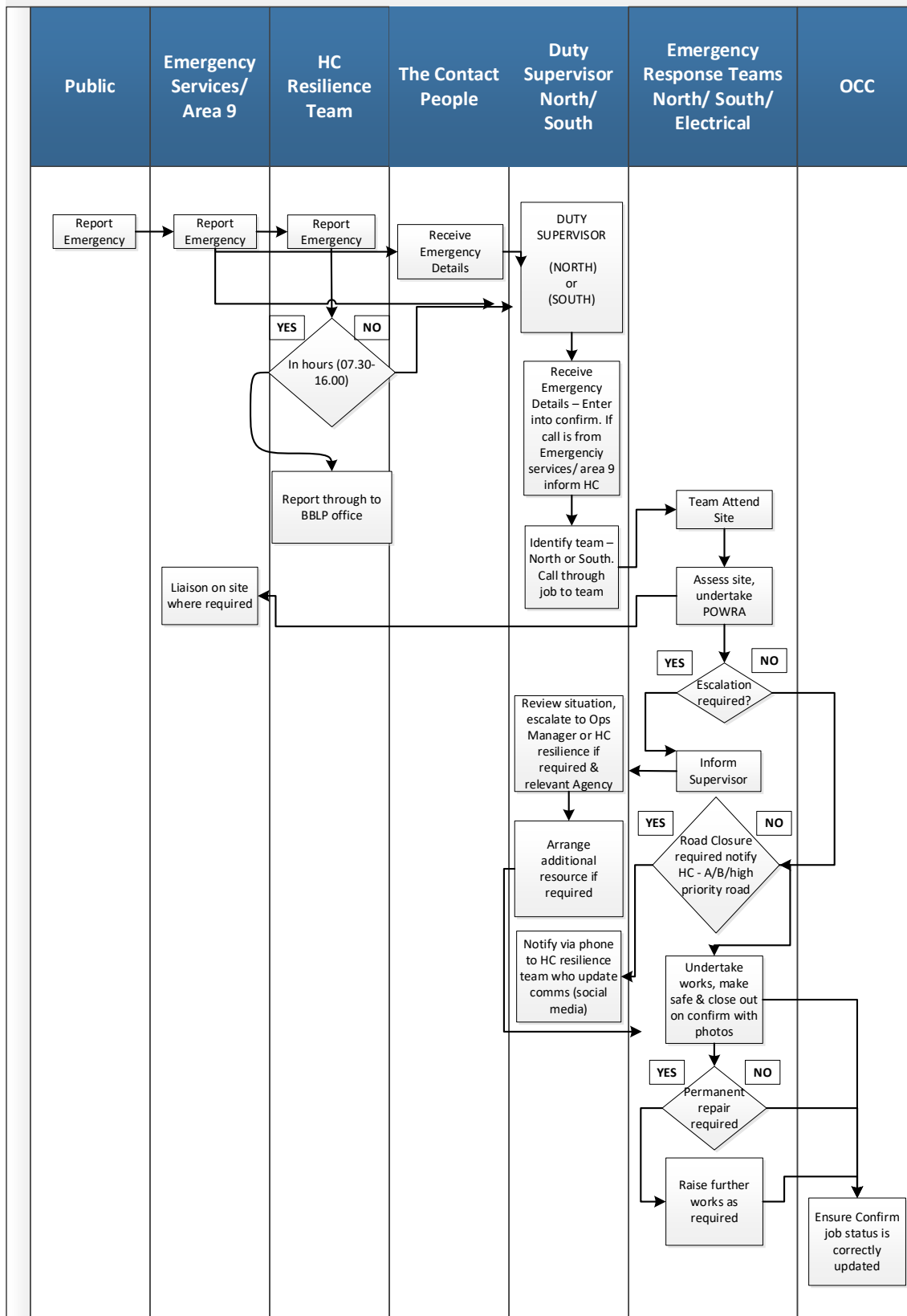
APPENDIX A: BBLP POLICY & PROCESSES TO BE USED IN THE DELIVERY OF THE ANNEX

Incident Response (NORMAL-HOURS SERVICE)

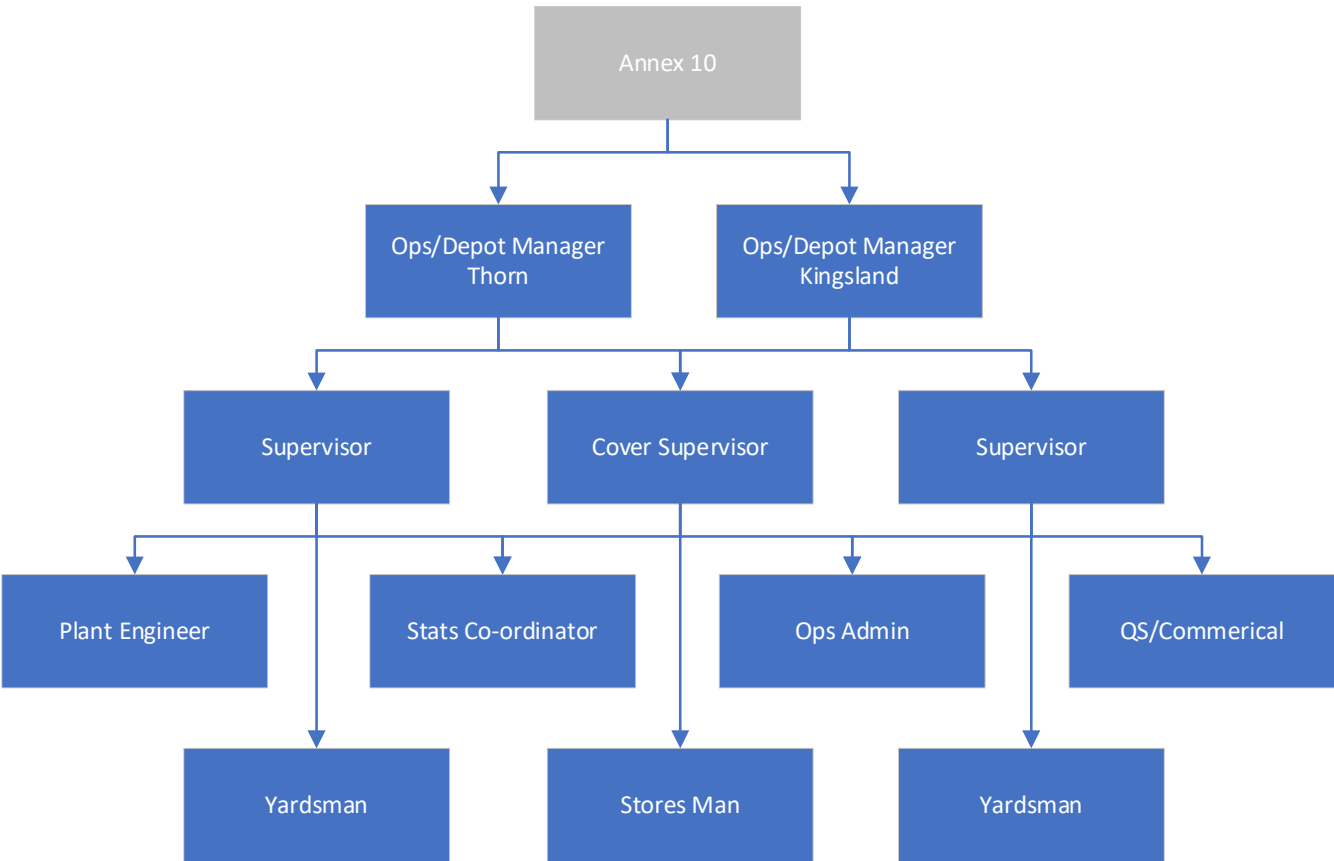


Incident Response (OUT OF HOURS SERVICE)

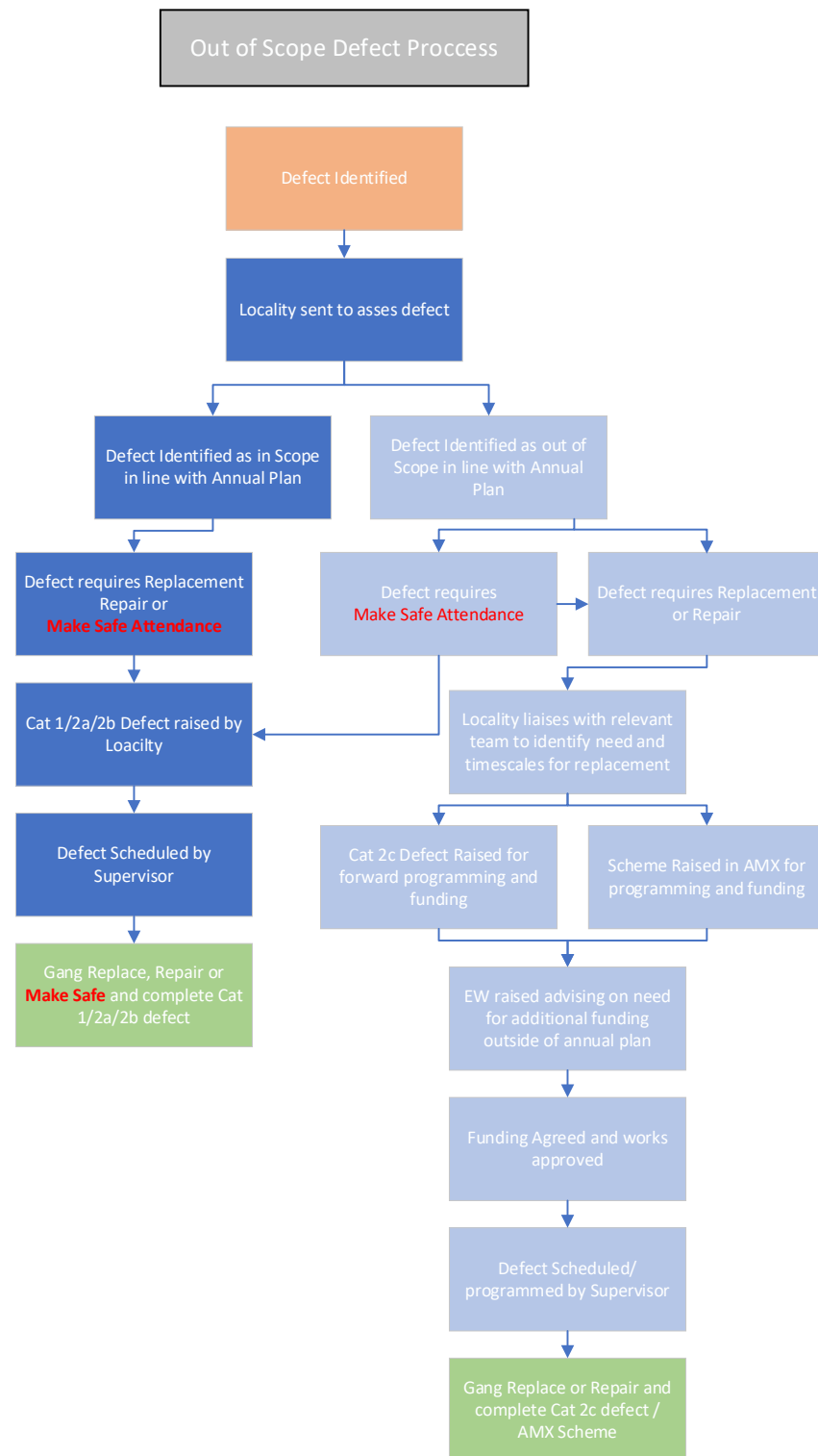
Emergency response process (OOH)



Organogram



Out of Scope – Cat 2c/AMX Process



APPENDIX B: PROGRAMME OF WORKS

Velocity Proposed Programme of works - Created from Vaisala SPI road review that takes place on an annual basis utilising the road condition points system.

All other areas are Reactive.

APPENDIX C: BUDGET BREAKDOWN

For a detailed breakdown refer to Budget Master

	Revenue	Capital	Total
OOH Response	239,092.33		£239,092.33
OOH Storm Event			
Defect Maintenance (Cat 1) A Roads		£6,792.59	£6,792.59
Defect Maintenance (Cat 1) B & Other Roads		£38,491.36	£38,491.36
Defect Maintenance (Cat 2a) A Roads		£289,058.52	£289,058.52
Defect Maintenance (Cat 2a) B & Other Roads		£447,944.77	£447,944.77
Defect Maintenance (Cat 2b) A Roads		£844,777.21	£844,777.21
Defect Maintenance (Cat 2b) B & Other Roads		£1,885,386.24	£1,885,386.24
Spray Injection		£254,266.29	£254,266.29
Minor Works team A Roads		£37,500.00	£37,500.00
Minor Works team B Roads		£212,500.00	£212,500.00
Reactive Lining		£219,660.00	£219,660.00
Subcontract Reactive Patching		250,000.00	£250,000.00
Total	£239,092.33	£4,486,376.99	£4,725,469.32

APPENDIX D: LIST OF NOMINATED SUBCONTRACTORS

Name of Subcontractor	Service Provided
INSIDEOUT	Labour Workforce
VELOCITY	Spray Injection Carriageway Repairs
AMBERON	Traffic Management
TARMAC TM	Traffic Management
TBC	Drainage Services for programmed gulley cleansing
CR MCDONALD	Carriageway Patching