

Chapter 8

Accessibility analysis

Setting accessibility standards

8.1 The development of access standards draws on established guidance from a range of sources including the Natural England Green Infrastructure Standards and standards for provision for children as defined by the Fields in Trust. Accessibility standards are expressed as average walk time distances converted into straight line 'buffers' measured from the boundary of each site. Guidance produced by Fields in Trust has been used as the basis of calculating walk time distances. This is shown in **Table 8.1 [See reference 30]**. Although the GI Framework uses slightly different distances (as described in **paragraph 8.4**).

Table 8.1: Converting walk time distances into straight line 'buffers'

Straight line distance	Walking time
300 metres	5 minutes
600 metres	10 minutes
900 metres	15 minutes
1200 metres	20 minutes
2000 metres	35 minutes

8.2 The standards that have been set reflect the generally accepted principle that people are willing to travel further to sites which have a wider 'offer' and range of facilities. The assumption is that larger sites (district and wider neighbourhood hierarchies as outlined in **Table 5.1**) will provide a greater offer

or have the potential to provide a greater offer and so people will travel further to these sites.

8.3 The accessibility standards proposed are show in **Table 8.2**.

Table 8.2: Accessibility standards for the typology and hierarchy differences

Hierarchy	Size threshold (greater than or equal to)	Catchment areas
Sub-regional	500ha	10km
District	100ha	5km
Wider Neighbourhood	20ha	2km
Neighbourhood	10ha	1km
Local	2ha	0.3km
Doorstep	0.5ha	0.2km

8.4 The GI Framework sets a target for greenspace close to home. This states that everyone should be within the catchment buffer for:

- Either the doorstep (200m) or local (300m) standard (This is the 5-minute standard); and
- The neighbourhood (1km) standard (This is the 15-minute standard).

Applying accessibility standards

Greenspace close to home

8.5 Table 8.3 shows the areas which are covered by the 5 and 15-minute standards, and areas which are covered by both. Access to both the 5 and 15 minute standards are headline standards for accessible greenspace within the GI Framework. Generally, accessibility is best in Hereford, Ledbury and Kington. Figure 8.1 summarises the area covered by each of the standards across Herefordshire.

Table 8.3: Areas covered by the 5 and 15-minute accessible green standards

Locality	Percentage area in 5 minute standard	Percentage area in 15-minute standard	Percentage area in both standards	Percentage area in neither standard
Hereford	71%	90%	69%	8%
Bromyard	45%	1%	1%	55%
Kington	65%	77%	44%	3%
Ledbury	69%	68%	39%	17%
Leominster	47%	6%	0%	48%
Ross-on-Wye	61%	54%	33%	19%
Rural area	13%	24%	10%	73%

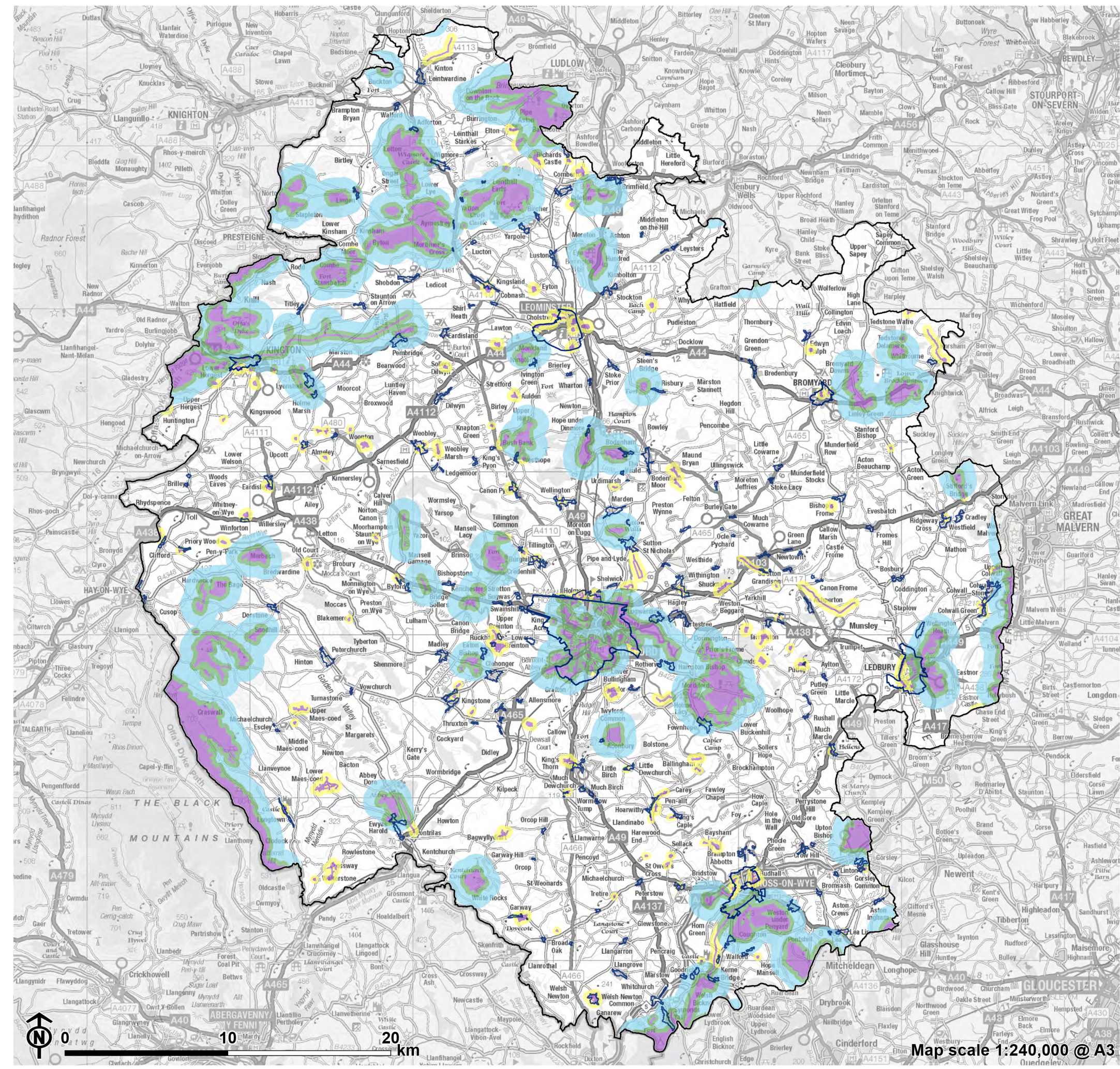
8.6 The rural area has the greatest percentage of area which is outside of either the 5-minute or 15-minute standard (58%). However, when accounting only for settlements within the rural part of the county the percentage area falls to 27%.

Just over half of the 162 rural settlements (shown in **Appendix F**) have no areas which are outside of both access standards.

8.7 Within rural parishes, accessibility to open spaces outside of the 5- and 15-minute access standard is also possible through the PRoW network. The PRoW network plays an important role in increasing the accessibility of open spaces in the wider countryside.

Figure 8.1: Access to greenspace close to home

- Herefordshire boundary
- Settlement
- Greenspace
- 5 minute standards - access to doorstep or local greenspace
- 15 minute standards - access to neighbourhood greenspace
- Access to 5 minute and 15 minute standards



Source: Herefordshire Council, Natural England, Ordnance Survey

Map scale 1:240,000 @ A3

Access to greenspace

8.8 Figure 8.2 to Figure 8.6 show the accessibility of accessible greenspace by hierarchy.

8.9 Overall, there is better access to district and wider neighbourhood greenspaces within the rural area, particularly around the margins of the county on higher ground. This is dominated by access to natural and semi-natural greenspace, notably common land.

8.10 Access to local and doorstep greenspace is more continuous within more urban areas.

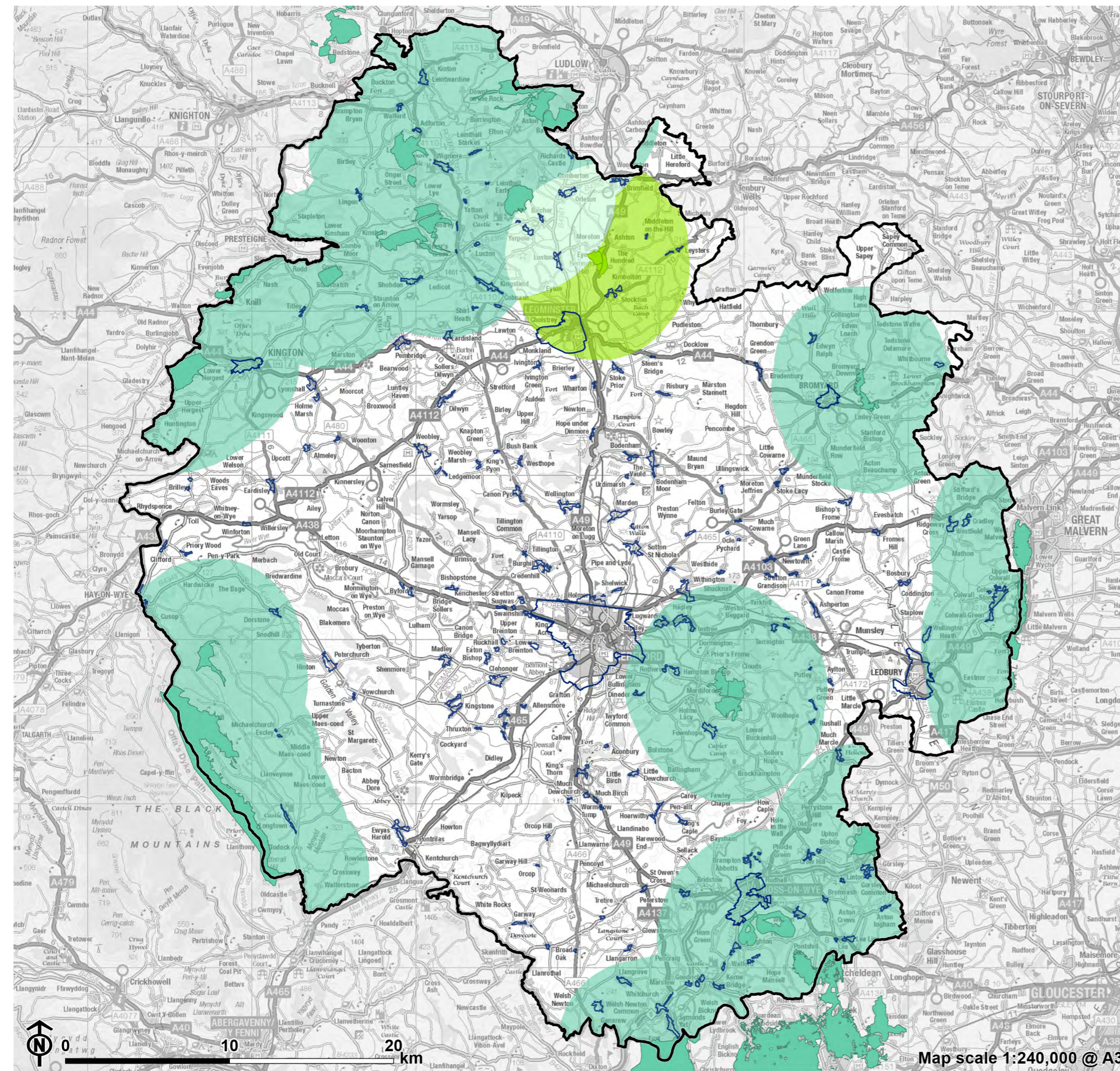
8.11 Figure 8.7 to Figure 8.13 show the accessibility to different types of greenspace across the county and within the major settlements. This gives an indication of the overall multi-functionality of the greenspace network.

8.12 The network is dominated by natural and semi-natural greenspace. Bromyard and Kington in particular are dominated by access to this typology. Leominster is the exception to this trend, with access to amenity greenspace but limited access to natural and semi-natural open space.

8.13 More multifunctional networks of greenspace are located in Hereford, around Ross-on-Wye and in a linear route north of Hereford, roughly following the route of the A49 and the River Lugg.

Figure 8.2: Access to district greenspace

- Herefordshire boundary
- Settlement
- Greenspace**
 - Amenity greenspace
 - Natural and semi-natural greenspace
- 5km access buffer**
 - Amenity greenspace buffer
 - Natural and semi-natural greenspace buffer
 - Amenity greenspace and Natural and semi-natural greenspace buffer

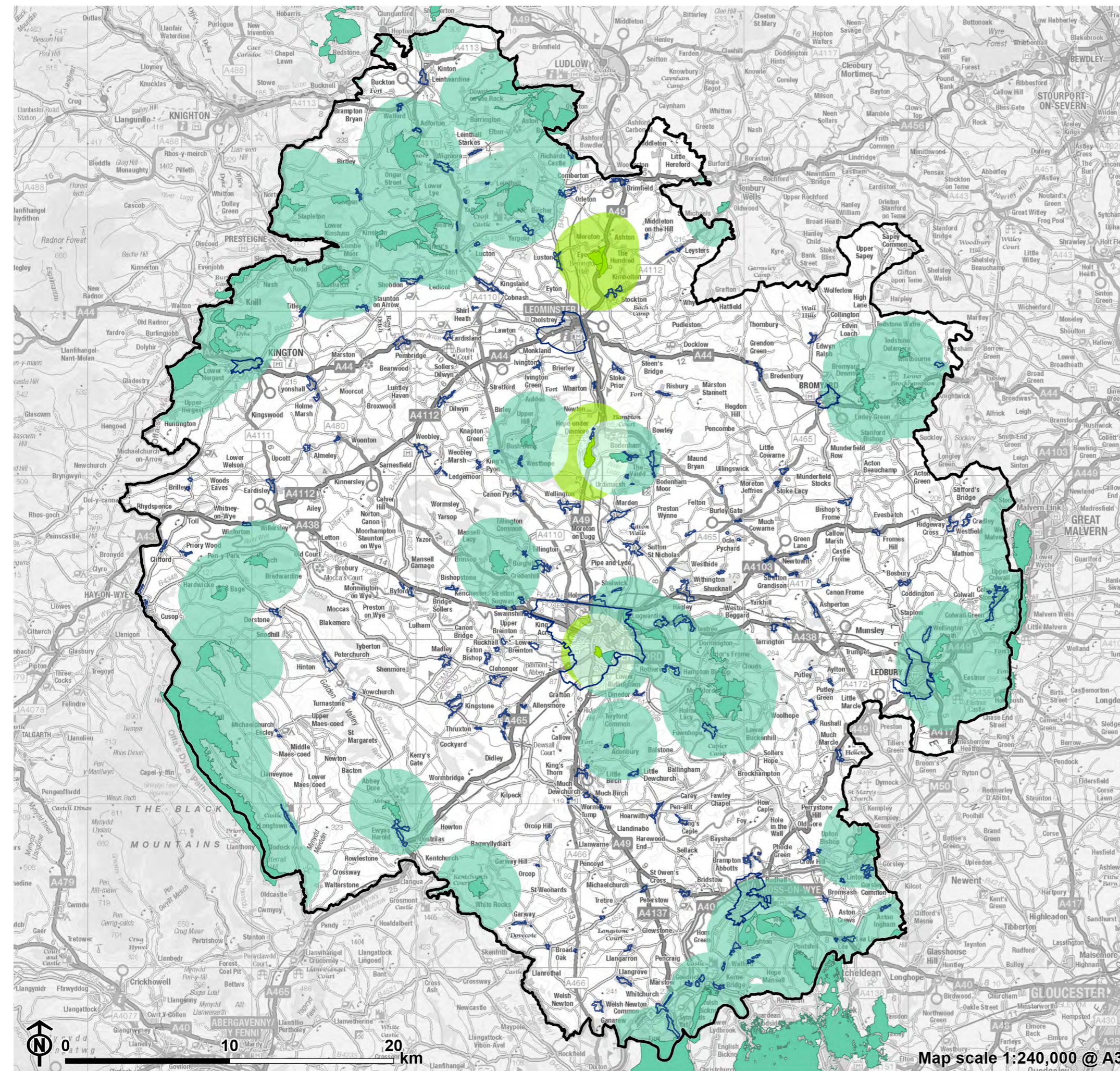


Source: Herefordshire Council, Natural England, Ordnance Survey

Map scale 1:240,000 @ A3

Figure 8.3: Access to wider neighbourhood greenspace

- Herefordshire boundary
- Settlement
- Greenspace**
 - Amenity greenspace
 - Natural and semi-natural greenspace
- 2km access buffer**
 - Amenity greenspace buffer
 - Natural and semi-natural greenspace buffer
 - Amenity greenspace and natural and semi-natural greenspace buffer

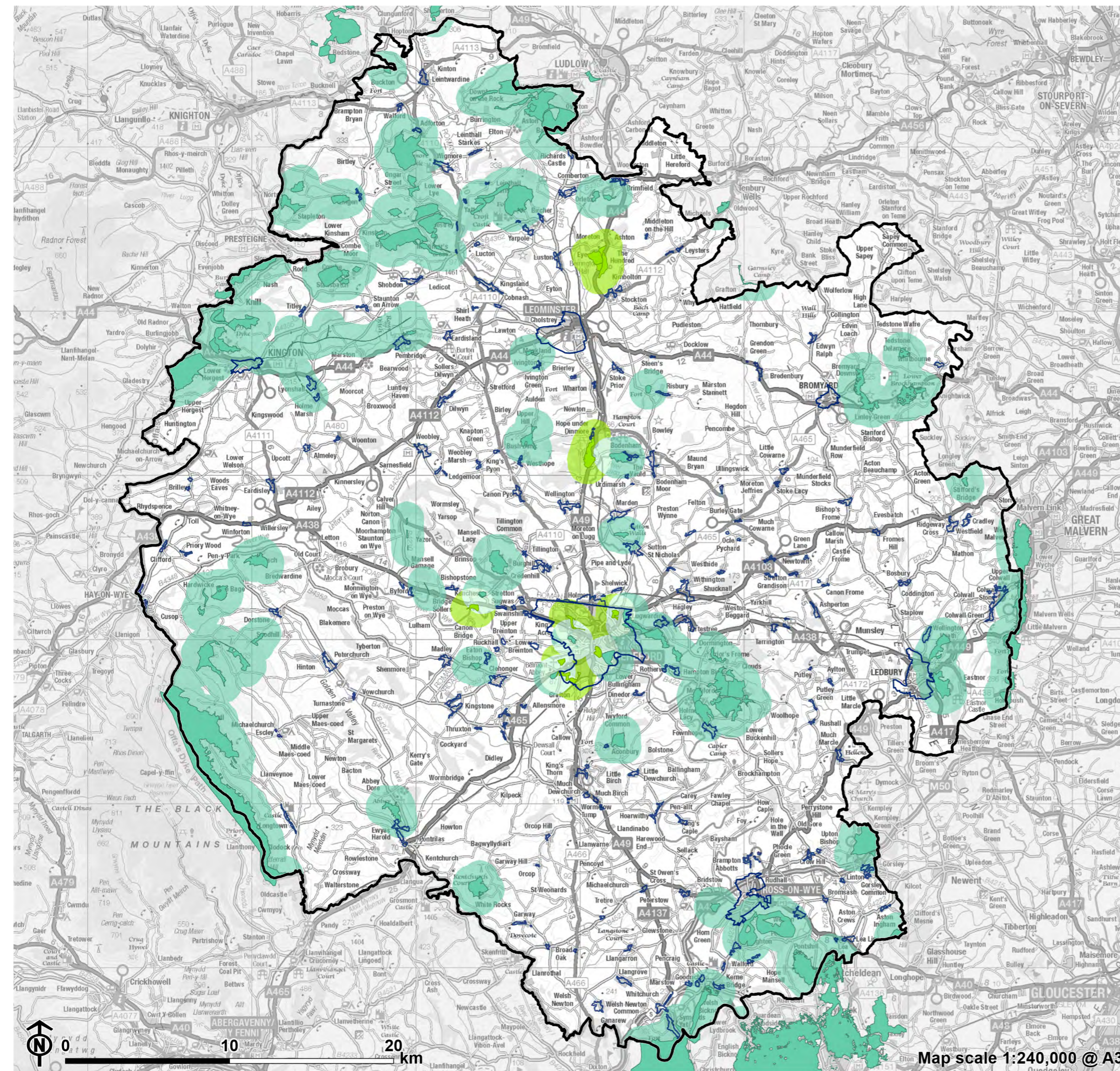


Source: Herefordshire Council, Natural England, Ordnance Survey

Map scale 1:240,000 @ A3

Figure 8.4: Access to neighbourhood greenspace

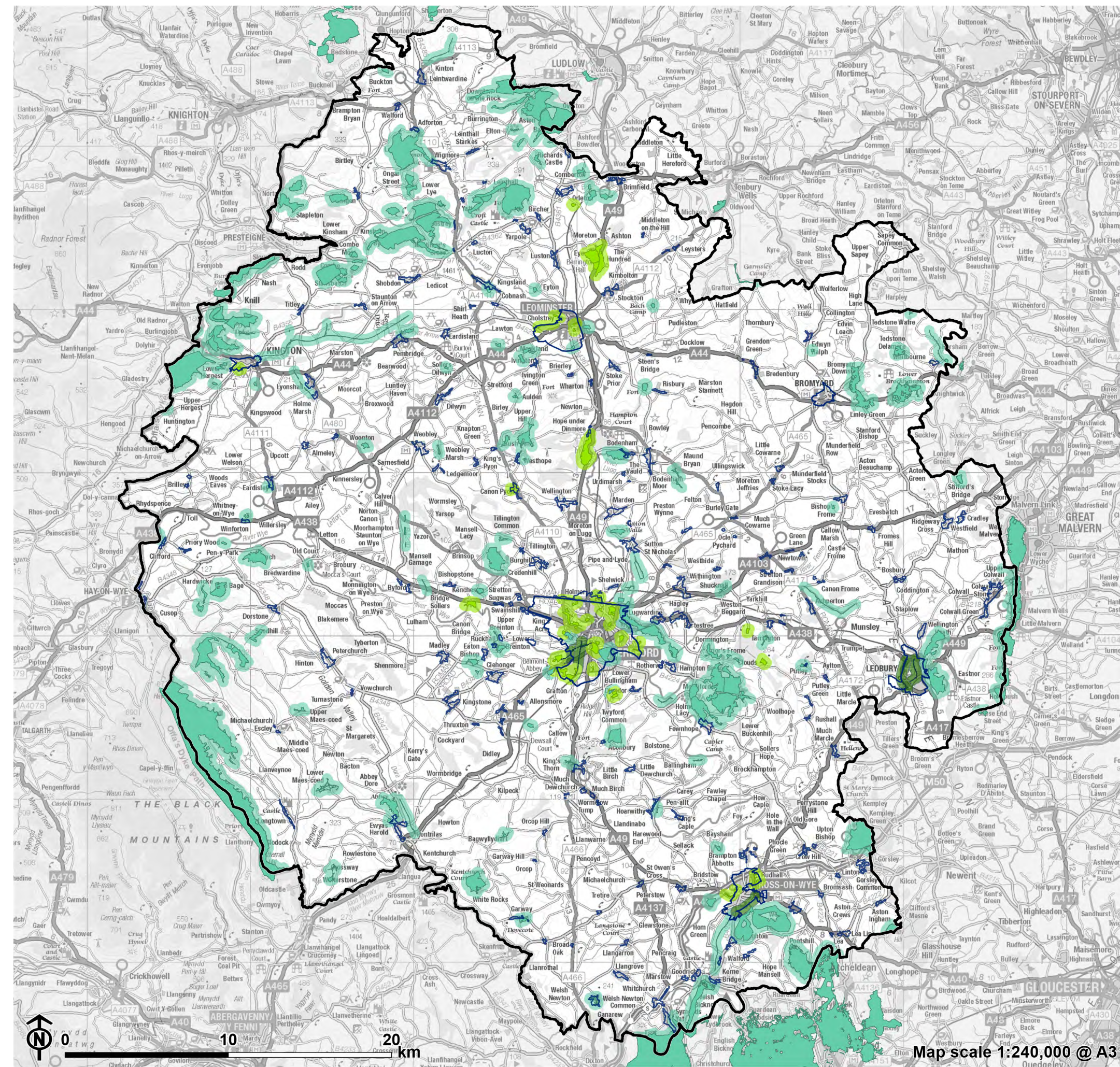
- Herefordshire boundary
- Settlement
- Greenspace**
 - Amenity greenspace
 - Natural and semi-natural greenspace
- 1km access buffer**
 - Amenity greenspace buffer
 - Natural and semi-natural greenspace buffer
 - Amenity greenspace and natural and semi-natural greenspace buffer



Source: Herefordshire Council, Natural England, Ordnance Survey

Map scale 1:240,000 @ A3

Figure 8.5: Access to local greenspace



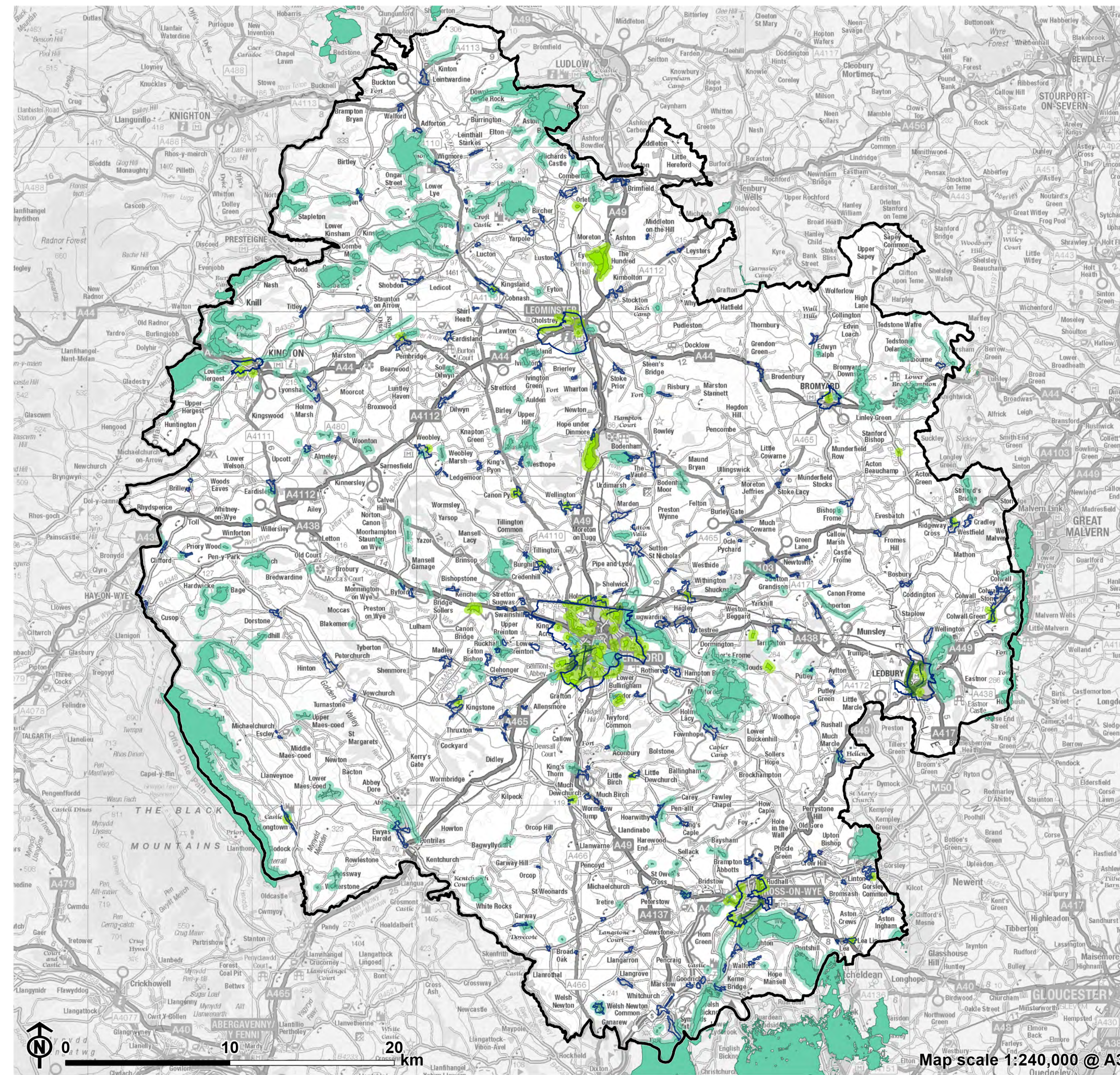
- Herefordshire boundary
- Settlement
- Greenspace**
- Amenity greenspace
- Green corridor or chain
- Natural and semi-natural greenspace
- 300m access buffer**
- Amenity greenspace buffer
- Green corridor or chain buffer
- Natural and semi-natural greenspace buffer

Source: Herefordshire Council, Natural England, Ordnance Survey

Map scale 1:240,000 @ A3

Figure 8.6: Access to doorstep
greenspace

- Herefordshire boundary
- Settlement
- Greenspace**
 - Amenity green space
 - Green corridor or chain
 - Natural and semi natural green space
- 200m access buffer**
 - Amenity greenspace buffer
 - Green corridor or chain buffer
 - Natural and semi-natural greenspace buffer



Source: Herefordshire Council, Natural England,
Ordnance Survey

Map scale 1:240,000 @ A3