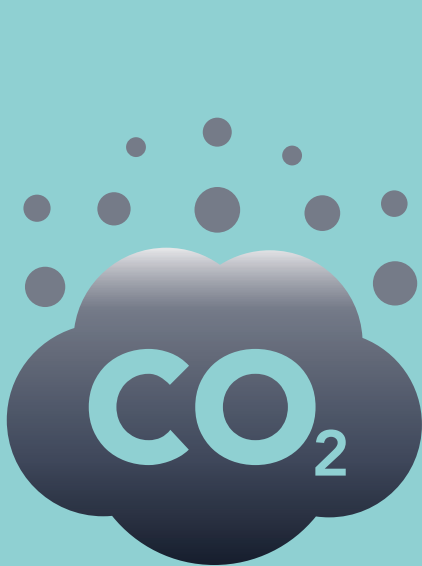


Over the past decade Herefordshire Council has made excellent progress leading local action on carbon dioxide reductions, laying a strong foundation as we strive for carbon neutrality by 2030.

Carbon Footprint

Herefordshire Council has been working to reduce Greenhouse gas emissions, with a new aspirational target for achieving carbon neutrality by 2030.



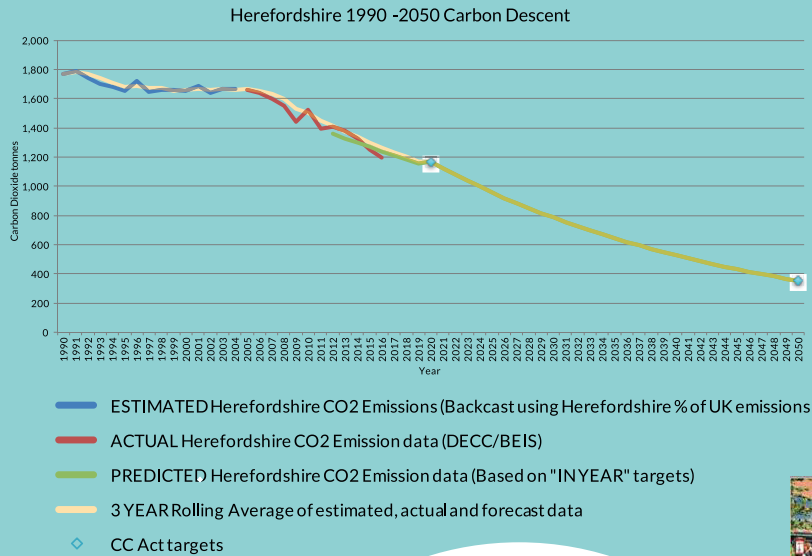
Between 2008/9 and 2018/19 we delivered a 43% reduction in our CO₂ emissions, exceeding the target reduction of 40% by 2020/21 two years early – that’s a difference of 11,875 tonnes of CO₂e – or equivalent to over 11,000 hot air balloons.



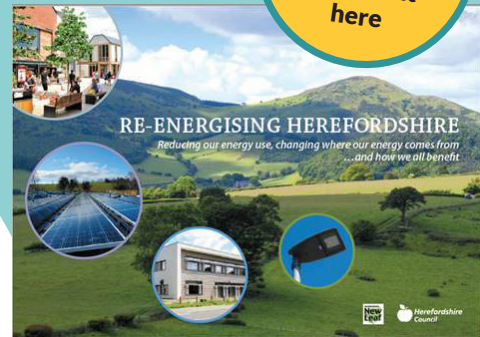
Re-energising Herefordshire

In 2013, Herefordshire communities, businesses and organisation signed the 'Re-energising Herefordshire Charter' a first of its kind countywide CO2 reduction target.

Herefordshire has achieved a 32.5% reduction in countywide emissions based on 1990 levels.



Download
Re-energising
Herefordshire
document
here



LED lighting

LED lights are much more efficient and longer-lasting than traditional lamps, using around 50% less electricity.

LED street lighting

We believe Herefordshire was the first county in the UK to upgrade all street lighting to LED. This has significantly reduced levels of light pollution and Herefordshire is reported by the Campaign to Protect Rural England as being the darkest county in England with the lowest average light levels.

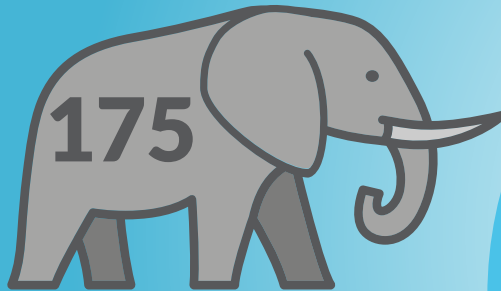
e l e c t r i c i t y

2011/12

65%
reduction

2018/19

the annual CO₂ saved is equivalent in weight
to 175 elephants



65% reduction in electricity used for street lighting, from
around 4.7m kWh to an estimated 1.7m kWh



LED lighting in office and car parks

The council has installed LED lighting across car parks and offices to further reduce emissions and costs.

Maylords Orchard Car Park is expected to save £11,872 per year. Garrick Car Park reduction of 65% in electricity. Unit 3, Thorn Business Park, annual emissions reduction of 12.4 tonnes of CO₂, annual saving £4,000.

WHAT

YOU

CAN

DO

What you can do

Change the lights in your home to LED lighting – find out more on the

Energy Saving Trust website 

2016/17 – 2020/21 - An estimated £1.5m saving from the LED street lighting.

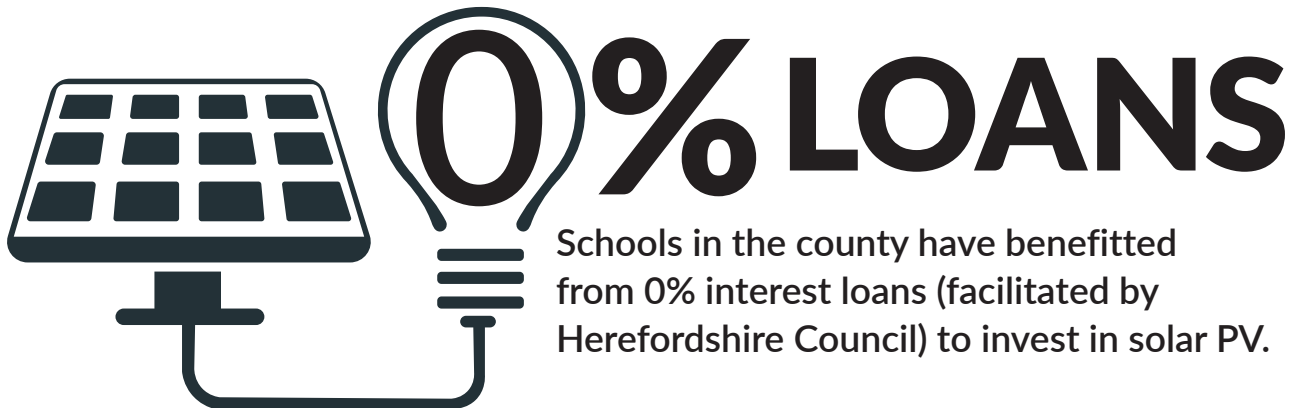
Renewable energy

Herefordshire Council is looking to increase the amount of energy it uses from renewable resources, and has been a national leader for the local installation of small scale renewables, in particular solar panels.

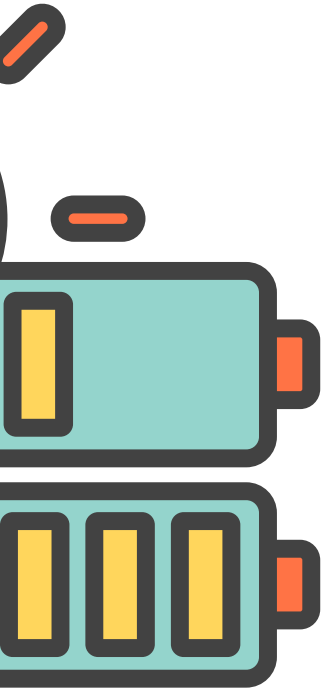
Investment across the Council's estate

Herefordshire Council has committed to invest £2.1m in solar photovoltaic (PV) panels across council buildings.

As of March 2020, there is 608 kWp of solar PV installed on council buildings, generating 512,487kWh per annum. This saves 131 tonnes of CO₂ each year.



Schools in the county have benefitted from 0% interest loans (facilitated by Herefordshire Council) to invest in solar PV.



Sustainable Energy in Public Buildings project (SEPuBu)


The European Regional Development Fund (ERDF) funded SEPuBu project is led by Herefordshire Council in conjunction with Shropshire Council and Telford & Wrekin Council.

Project outputs are targeted at annual energy and greenhouse gas reductions of just under 1.0 GWh or 328 tonnes (CO₂e) - 0.3 GWh and 110 tonnes CO₂e in Herefordshire.

Marches Renewable Energy Project

In Summer 2019, Herefordshire Council successfully applied for European Regional Development Funds to implement a grant scheme across the Marches. The projects provides 50% grants to install renewable energy. To date, 7 grants to have been awarded to SMEs, public and private sector, charities and not for profit organisations

**WHAT
YOU
CAN
DO**

If you're a business or community group take advantage of the up-coming MarRE project and get 50% funding towards any renewable technology.
eem@herefordshire.gov.uk 



More efficient home heating

The more energy efficient our homes are the less they cost to heat and keep warm.

Keep Herefordshire Warm

Herefordshire's affordable warmth service seeks to reduce fuel poverty in the county by providing advice, referrals and assistance for home energy efficiency measures, such as insulation and more efficient heating systems.

If you live in Hereford or one of the market towns, you can see the thermal efficiency and heat loss of your home through the heat loss map on the council's website.

[Click here to see heat loss map](#) 

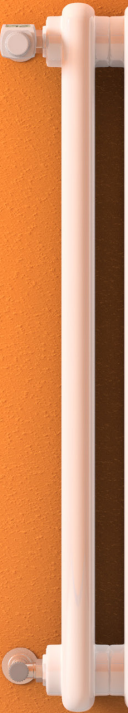
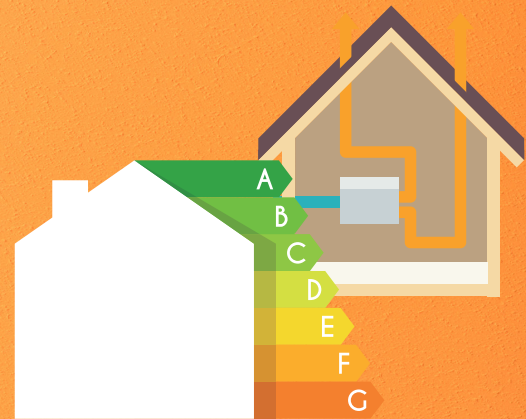
Warm Homes funding -

Find out if you're eligible for FREE home energy advice and support - contact Keep Herefordshire Warm.

Freephone: 0800 677 1432,

Text: 07583 740914,

Email: khw@mea.org.uk 



Warm Homes Fund - Spring 2019

In December 2018 Herefordshire Council and Shropshire Council in conjunction with their energy advice providers* were successful in bidding for the installation of affordable first time central heating systems for households in fuel poverty.

To date some 47 eligible low income households across the two counties have been fitted with first time central heating systems, with a further 700 plus set to benefit between now and May 2022 across both urban and rural areas in the two counties. Systems that can be funded include LPG and/or renewables (rural) as well as mains gas (urban).

**Keep Herefordshire Warm is run by Severn Wye Energy Agency on behalf of Herefordshire Council*



WHAT

YOU

CAN

DO

To reduce CO2 emissions at home, you can turn your heating down 1 degree C, and fit energy saving devices in your home.

How we travel

Choosing more active ways to travel, such as walking and cycling, not only helps reduce car emissions but also improves health and fitness.

Encouraging active travel

Herefordshire Council is making it easier for people to choose active travel options by:

- Developing new cycling routes, including quiet routes
- Offering Bikeability cycle training to all Herefordshire schools
- Developing and improving Park and Cycle sites around Hereford
- Offering free bike loans to people trying to access employment and training
- Making it safer to walk, with improved crossings and walkways
- Walking and Cycling rangers on bikes help keep our off-road cycle routes clean



69% 

Cycling on dedicated off-road cycle network has increased by 69% since 2003

**WHAT
YOU
CAN
DO**

Could you cycle or walk instead of taking the car?

Visit the **Choose How You Move** pages on the council website



The council offers Travel Grants to schools and businesses to encourage sustainable travel

Beryl Bikes

In July 2019, Herefordshire Council partnered with a company called Beryl to provide bike share across Hereford. 186 bikes, and 39 parking bays are distributed across the city at key destinations.

The bikes are available to hire via the Beryl App which lets users find a bike and then simply unlock it using their smartphone.

www.beryl.cc/bikeshare/hereford



Smart Travel

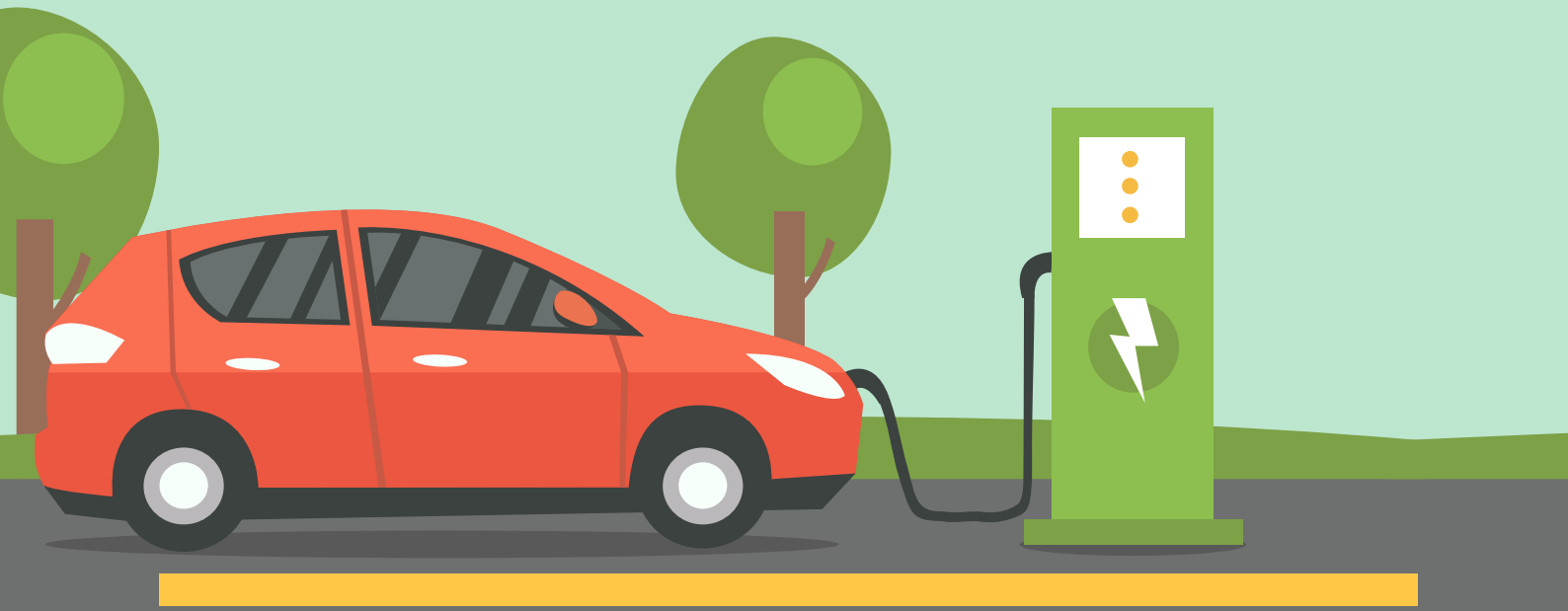
Electric vehicle charging points

Demand for electric cars reached a record high. On average, an electric vehicle emits (through the electricity it takes to charge the vehicle) approximately 60% less CO₂e than an average petrol vehicle.

Currently there are 12 publicly available EV charge points installed across the county and we are actively seeking to install more.

Council pool cars

The Council has replaced its aging fleet of vehicles with new more efficient vehicles including 7 fully electric vehicles and 6 hybrid vehicles to significantly reduce emissions. This is supported by Electric Vehicle Charge Point infrastructure in council offices and in market towns across the county.



Pedicargo

Pedicargo have avoided approximately 7.8 tonnes of CO₂e over five years by using bikes instead of small vans to deliver post and internal mail for Herefordshire Council. They have travelled approximately 42,000 kms.



WHAT YOU CAN DO

You may be able to access government grants for:

- Buying a low emission car:
www.gov.uk/plug-in-car-van-grants
- Installing a home charging point:
www.gov.uk/government/publications/customer-guidance-electric-vehicle-homecharge-scheme

www.herefordshire.gov.uk
