

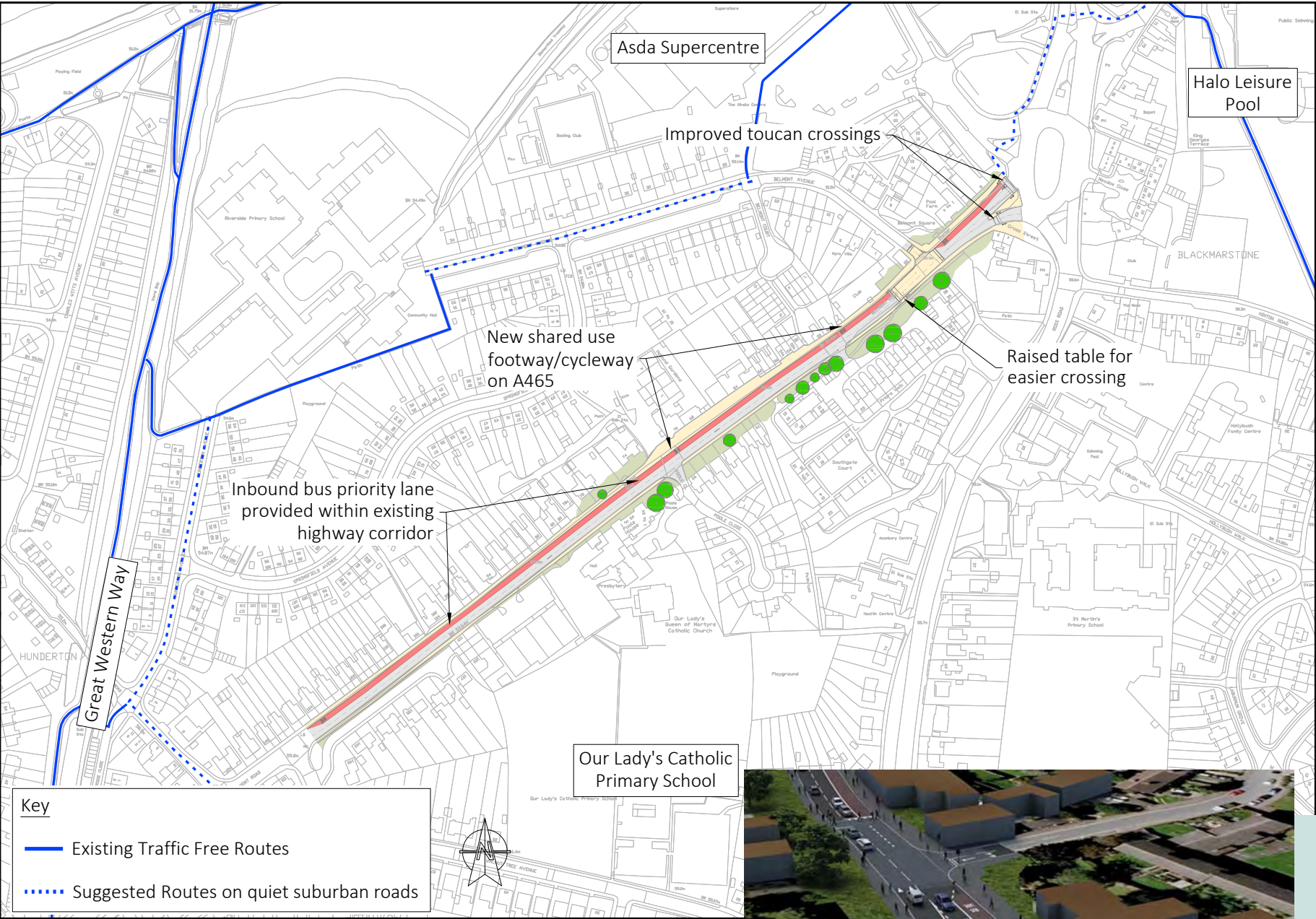
Belmont Road bus priority measures

An inbound bus lane on Belmont Road (A465) complemented by new and improved cycleway/footways and an improved crossing at Belmont Avenue

Benefits

- An inbound bus lane and new cycleway from Hunderton Road to Asda Roundabout
- Easier to cross Belmont Road
- Safer journeys to the city centre
- Improved bus journey times to the city centre
- Cleaner air quality
- Healthier and happier journeys
- Encourages inexperienced and returning cyclists

Visualisation looking north-east from Walnut Tree Avenue junction to show possible bus priority measures along the A465



Visualisation of possible bus priority measures and improved crossings along the A465 approaching the Asda Roundabout



Belmont Road walking and cycling improvements

Improving the environment for walking and cycling and connecting communities either side of Belmont Road

Benefits

A new cycleway on Belmont Road from Tesco Roundabout to Walnut Tree Avenue

Easier to cross Belmont Road

Better connected local communities

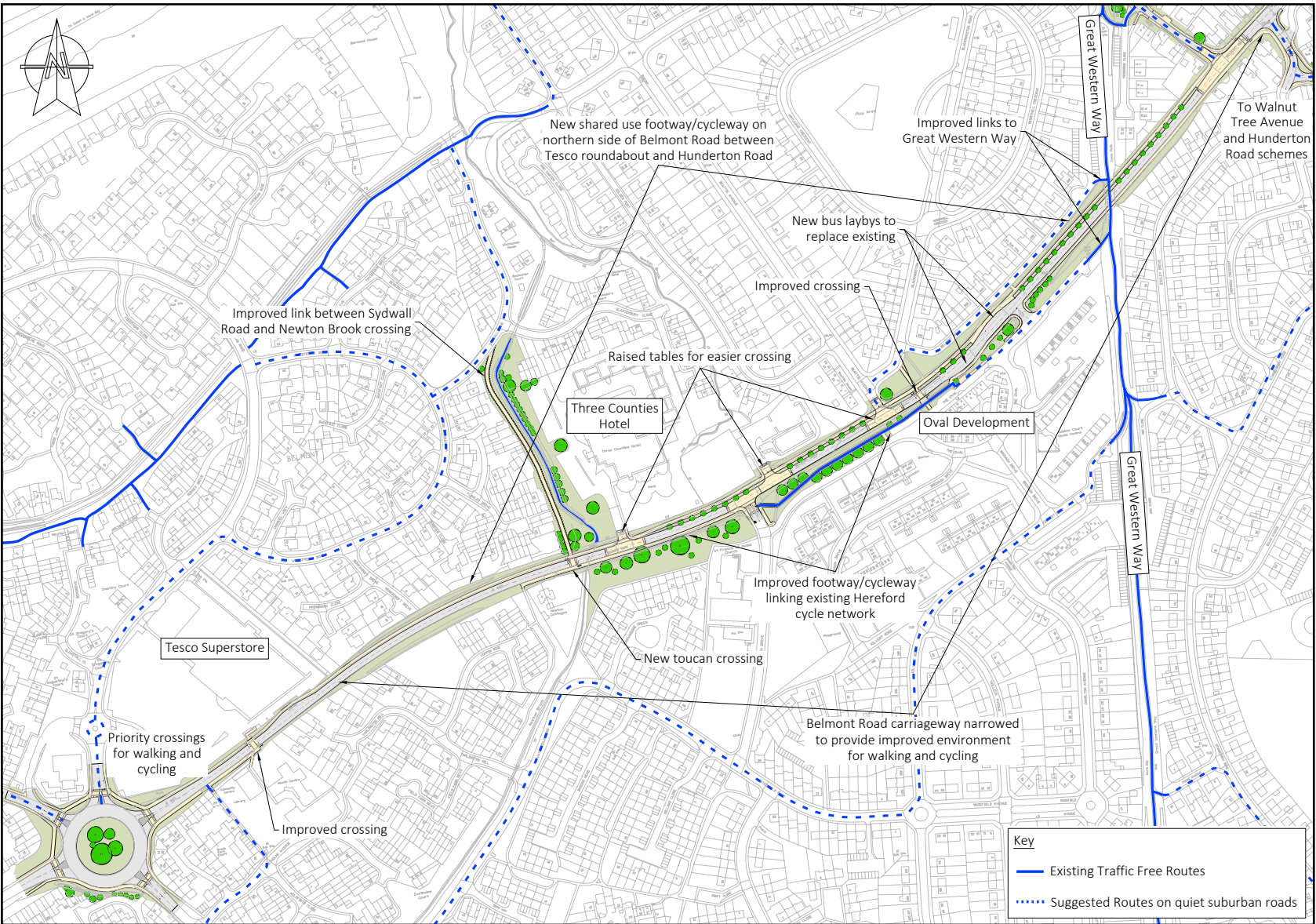
Safer journeys to school

Healthier and happier journeys to school

Improved links to existing walking and cycling routes, such as Great Western Way

Improved tree-lined street environment

Encourages inexperienced and returning cyclists



Visualisation of possible walking and cycling improvements at Tesco Roundabout



Visualisation of possible new toucan crossing on Belmont Road near Newton Brook, with connecting shared use path and improved link to Sydwall Road



Belmont Road weight restriction

Diverting heavy goods vehicles away from communities, improving the environment for walking and cycling. The location of the weight restriction is subject to separate consultation.

Benefits

Improved traffic flow & fewer HGVs on Belmont Road

Cleaner air quality

Quieter streets

Safer journeys for all

Healthier and happier journeys

Belmont Road (West) walking and cycling improvements

Improving the environment for walking and cycling and connecting communities along Belmont Road west of Tesco Roundabout

Benefits

A new cycleway on Belmont Road from Ruckhall Lane to Tesco Roundabout

Better connected local communities via new cyclepath from Ruckhall Lane

Cleaner air quality

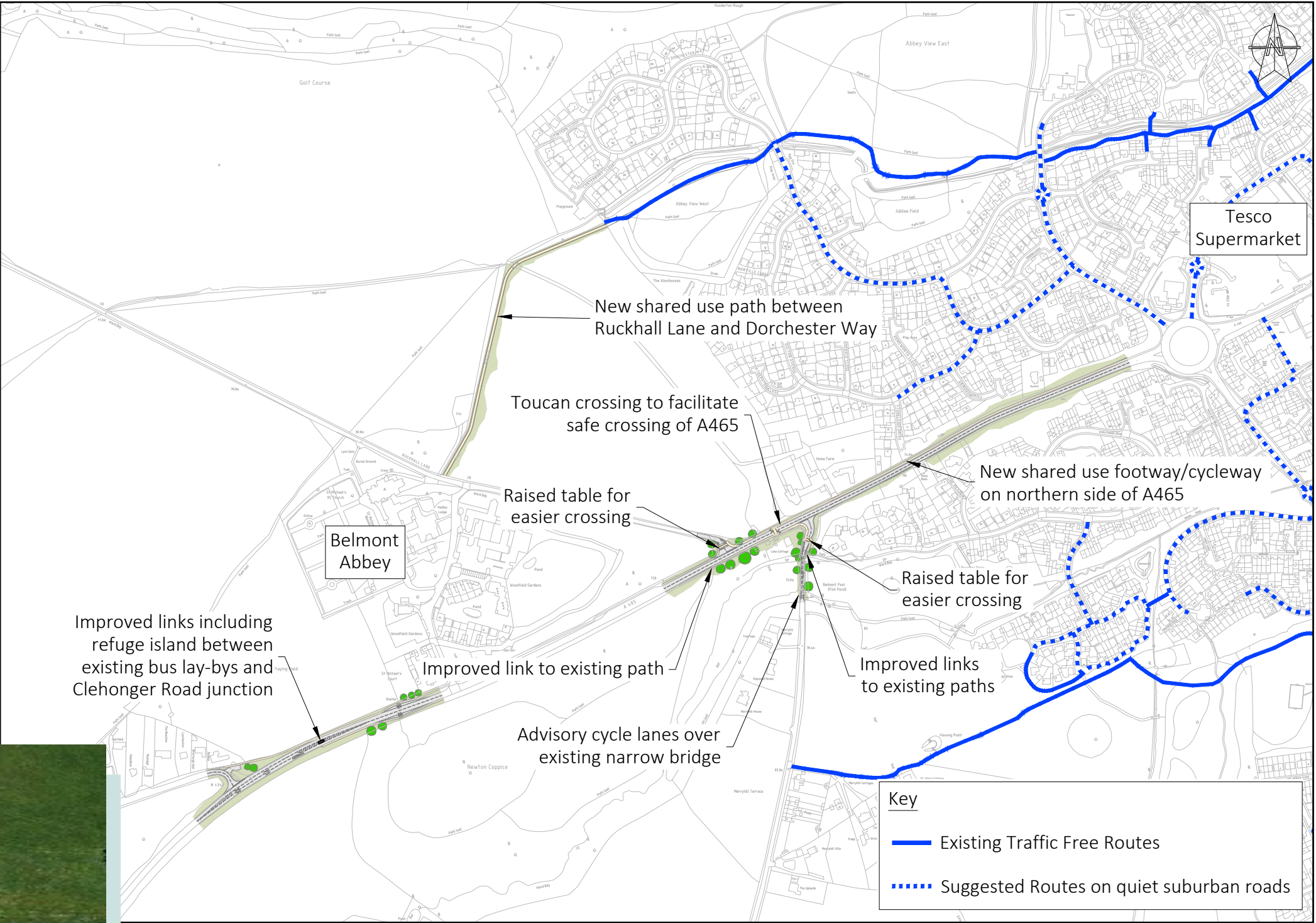
Quieter streets

Easier to cross Belmont Road

Safer journeys for all

Healthier and happier journeys

Encourages inexperienced and returning cyclists



Visualisation looking northwest of possible walking and cycling improvements at western end of Belmont Road. Shows possible Toucan crossing of Belmont Road and improvements at junction with Ruckhall Lane

Better walking and cycling routes to Hereford Enterprise Zone

Improving quieter alternatives to the main roads for walking and cycling, extending from Belmont to Hereford Enterprise Zone

Benefits

Tackling barriers to walking and cycling

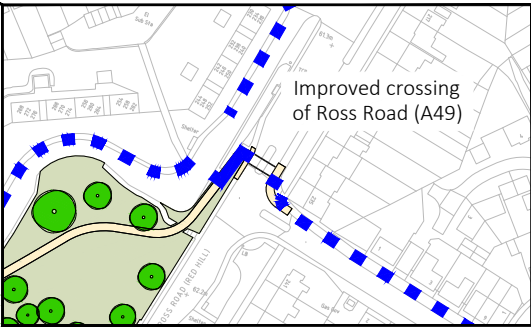
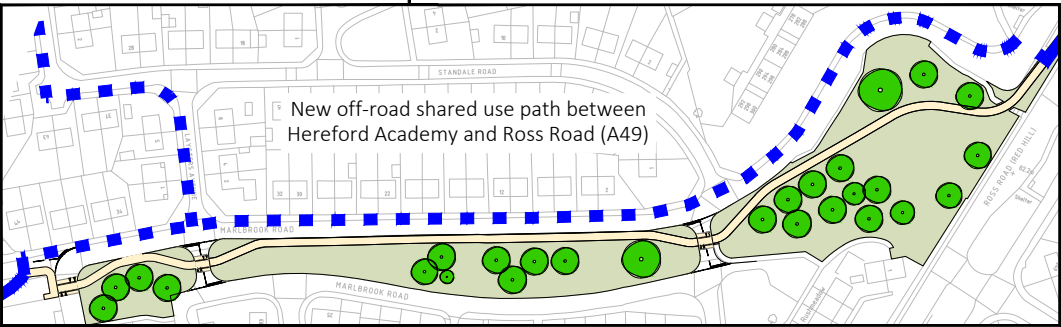
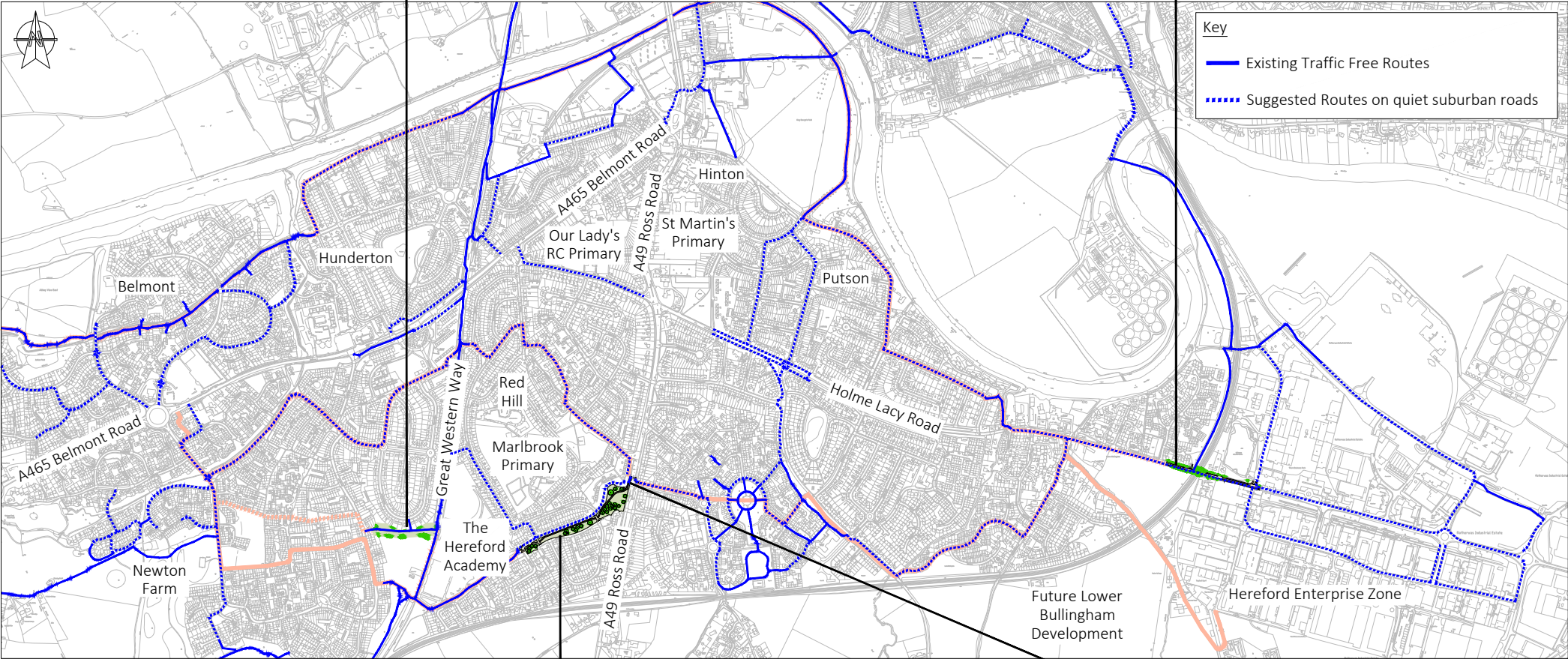
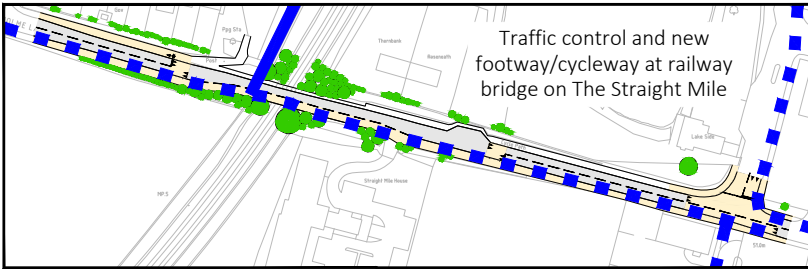
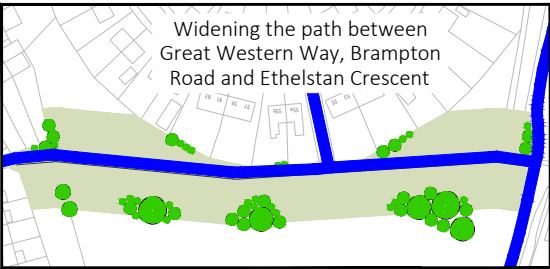
Opening up new links and opportunities for walking and cycling

Encourages inexperienced and returning cyclists

Safer journeys to school and work

Healthier and happier journeys to school and work

Visualisation looking east along Marlbrook Road showing possible off-road shared use path from Hereford Academy to Ross Road (A49)



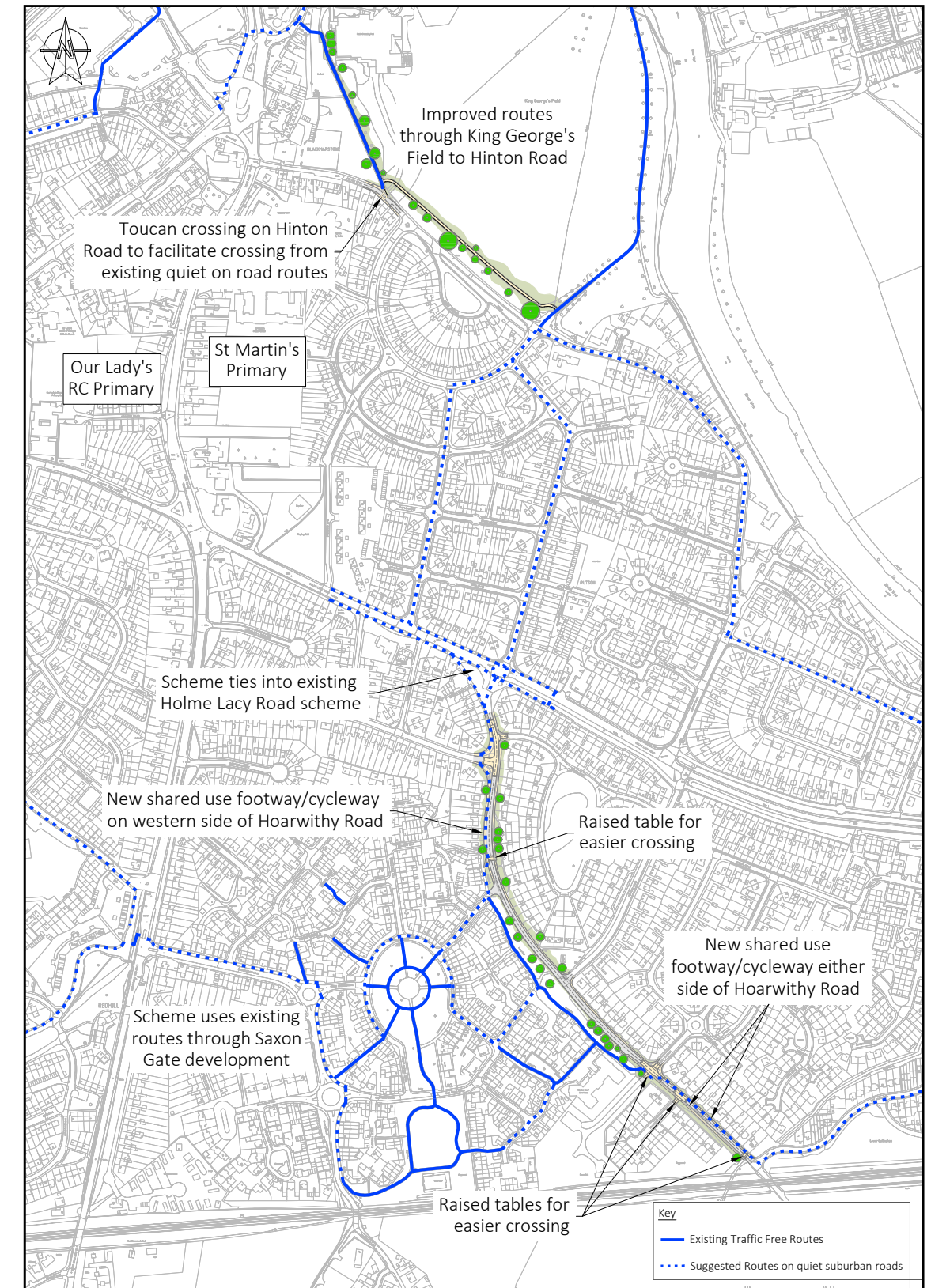
Hoarwithy Road and Hinton Road walking and cycling links

Improving links to Holme Lacy Road from the north and south, connecting communities with the city centre and HEZ

Benefits

- New cycleway on Hoarwithy Road from The Pastures to Holme Lacy Road
- Improved link between Hinton Road and the Leisure Pool and city centre
- Improved connections between the city centre and the HEZ
- Better connected local communities
- Easier to cross Hoarwithy Road and Hinton Road
- Safer journeys to work
- Opening up new links and opportunities for walking and cycling
- Encourages inexperienced and returning cyclists

Visualisation of possible shared use footway/cycleway either side of Hoarwithy Road at the Aconbury Avenue / Saxon Hall entrance crossroads, looking north towards existing cycleway at Poppy Walk



Holme Lacy Road —further walking and cycling improvements

Improving the environment for walking and cycling and connecting communities along Holme Lacy Road to the HEZ

Benefits

New cycleway between Walnut Tree Avenue and the HEZ

Priority working under rail bridge

Improved walking and cycling route under rail bridge

Joining up recent improvements on Holme Lacy Road

Improved connections to the HEZ

Better connected local communities

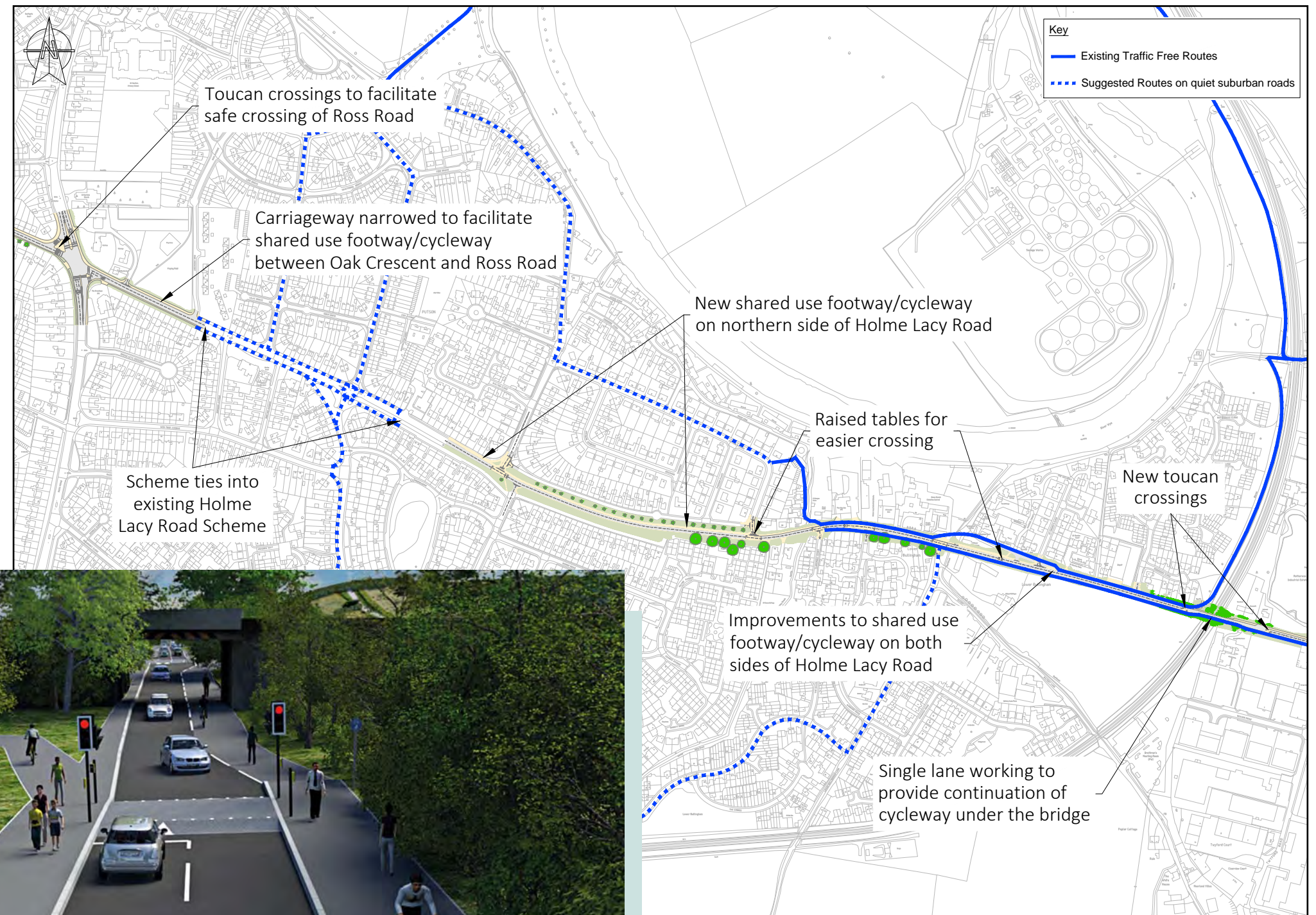
Easier to cross Holme Lacy Road

Safer journeys to work

Healthier and happier journeys to work

Encourages inexperienced and returning cyclists

Opening up new links and opportunities for walking and cycling



Visualisation of possible shared use footway/cycleway under the rail bridge on The Straight Mile, looking towards Hereford Enterprise Zone. Shows toucan crossing and the priority working for motor vehicles under rail bridge

Walnut Tree Avenue / Hunderton Road traffic reduction

Removing through traffic and connecting communities either side of the A465 to enable a walking and cycling friendly environment

Benefits

Through traffic removed from Walnut Tree Avenue and Hunderton Road

Better connected local communities

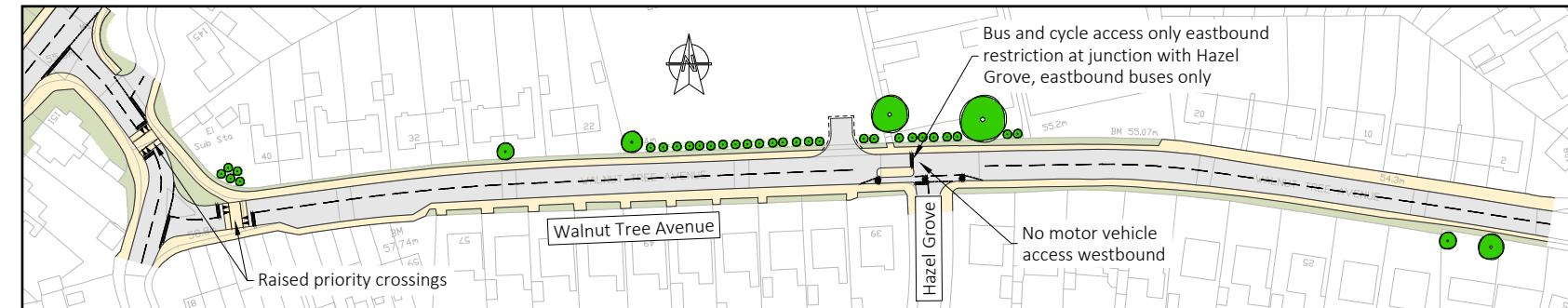
Easier to cross Belmont Road

Safer journeys to school

Healthier and happier journeys to school



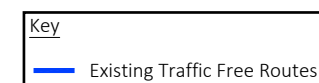
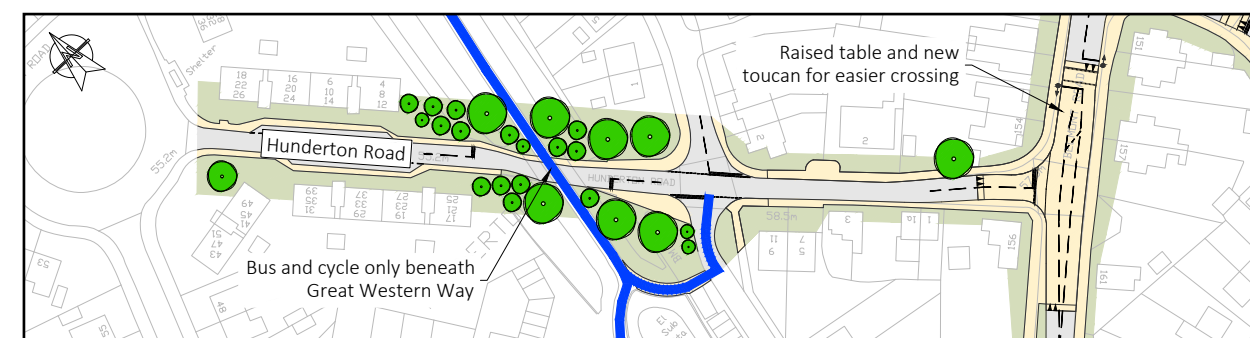
Inset plan – Walnut Tree Avenue



Overview plan



Inset Plan – Hunderton Road



Visualisation looking south showing possible walking and cycling improvements at the Belmont Road / Walnut Tree Avenue / Home Lane junctions

Visualisation of Walnut Tree Avenue looking towards Belmont Road showing possible bus and cycle only access at Hazel Grove junction



Have your say

If you would like more information on the improvements presented today or to give your views on what you've seen, you can:

- Speak to a member of the team
- Visit our website at:
www.herefordshire.gov.uk/south-wye-transport-package
- Fill in the questionnaire today or return it in the Freepost envelope provided
- Email us: **southwyeTP@balfourbeatty.com**
- Write to us at:
FREEPOST: RTHL-BBZH-JATH
(SWTP Active Travel)
Balfour Beatty Living Places
Unit 3, Thorn Business Park
Rotherwas
HEREFORD
HR2 6JT

The closing date for feedback is:
Tuesday 25th October 2016

What happens next?

Late 2016

- Public consultation until 25th October
- Review of consultation feedback
- Council decides improvements to take further

2017 and onwards

- Preliminary design
- Further community consultation
- Detailed design and implementation



www.facebook.com/herford2020



www.twitter.com/herford_2020