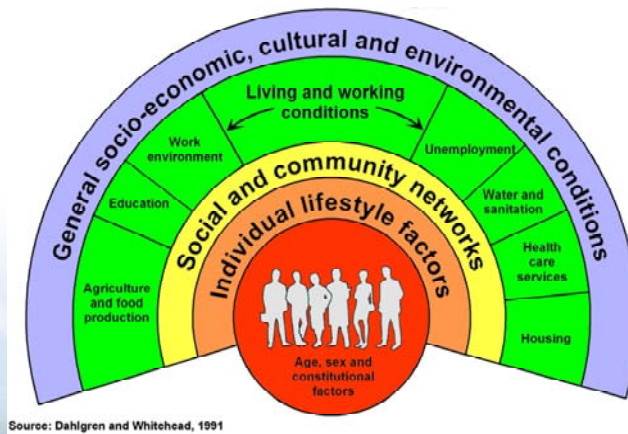


Overview of the 2011 State of Herefordshire report & Joint Strategic Needs Assessment

HEREFORDSHIRE JOINT STRATEGIC NEEDS ASSESSMENT 2011 KEY POINTS AND RECOMMENDATIONS



THE HEREFORDSHIRE
partnership

the state of Herefordshire report
2011

Key findings



Structure

- Introduction
- Overview of **current** evidence
- 10 min break @ 10h30
- Overview of **facts & figures** website
- What we propose for the **future**
- Group discussion: what do you think?



Introduction

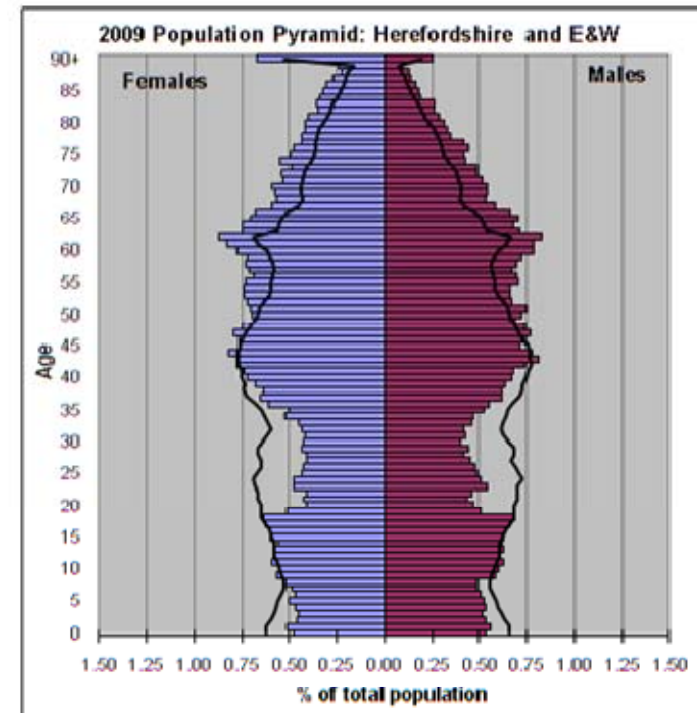
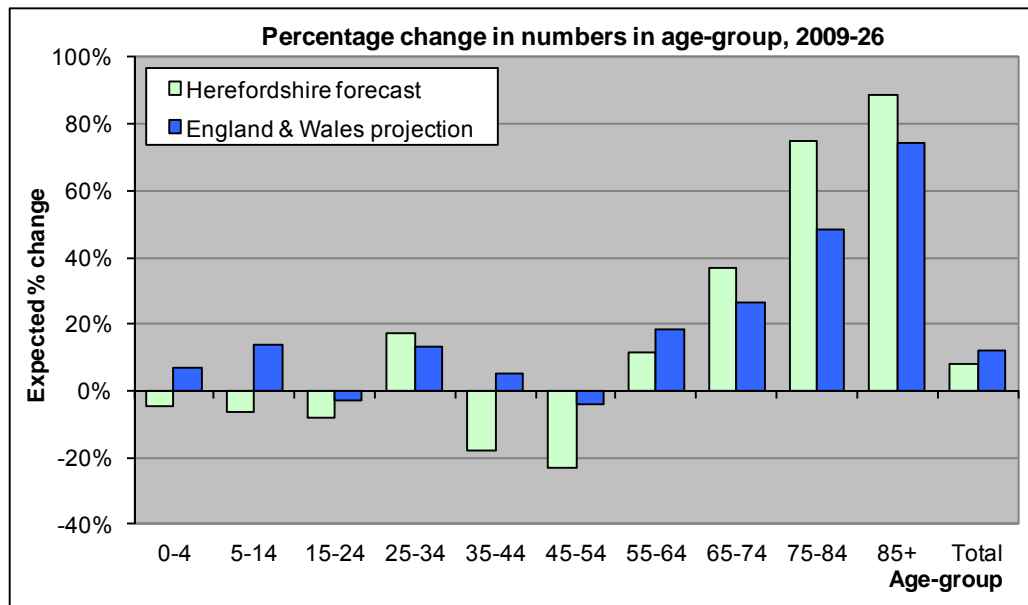
- **State of Herefordshire**: 10th annual report, overview of the key issues, evidence base for the Herefordshire Partnership
- **Joint Strategic Needs Assessment**: 4th annual report, statutory, health & well-being needs of Herefordshire's population
- **Underpinning evidence**: available on the 'Facts & Figures' website (by theme or area)

Population

- Population is **increasing due to in-migration**, although slowed during the recession
- **Small but growing BAME population**
- **Dramatic increase in numbers of migrant workers** but no single figure
- Herefordshire is **sparsely populated**
- **Older age structure** and it is increasing disproportionately to the whole population

Population

- Older age structure



Children & young people

- Although overall numbers of children continue to fall, there have been more births than expected in recent years.
- Positive outcomes for young offenders
- Qualifications generally good but vulnerable groups don't do as well and concern about early years development
- Numbers in Education, Employment & Training are not as high as needed esp. for young offenders and care leavers
- Poor dental health
- Problems with alcohol and young people esp. in deprived areas
- Still large proportions of child obesity

Child poverty deteriorating links to areas of high social housing

Herefordshire Children in Poverty.

Showing North and South Locality Areas, and LSOA areas.
 Highlighting top 10% of children eligible for Free School Meals.

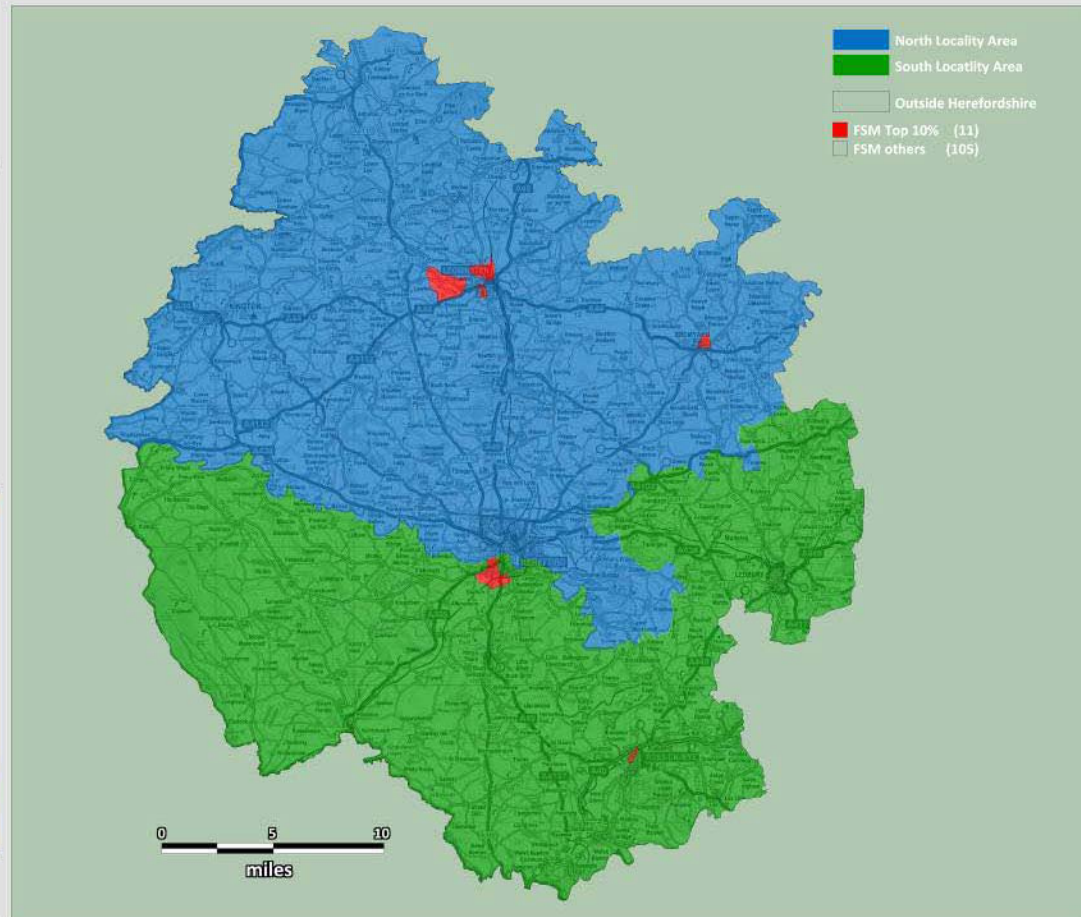
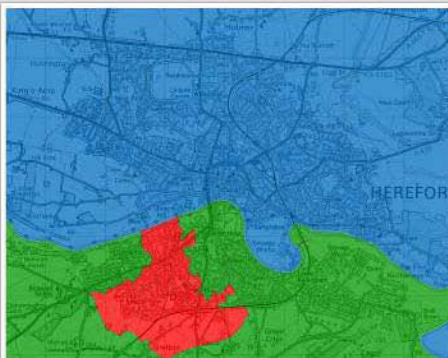
Herefordshire Council
 Children and Young People's Directorate.
 PO Box 185, Blackfriars, Blackfriars Street, Hereford. HR4 9ZR

Map produced by: Martin D. Clarke

Herefordshire Children in Poverty

Percentage of children (under 16) who are eligible for Free School Meals.

LSOA_ID	LSOA_Name	U16 FSM %
E01013992	Newton Farm - Treago	31521.72%
E01013993	Newton Farm-Brampton Road	39925.5%
E01013994	Hunderton	35727.78%
E01013995	Golden Post-Newton Farm	48934.46%
E01014005	Bromyard Central	26825%
E01014042	Leominster - Ridgemoor	46626.3%
E01014044	Leominster - Barons Cross	37521.22%
E01014047	Leominster - Gateway	28525.89%
E01014064	Ross - John Kyrle	31521.05%
E01014071	Redhill-Belmont Road	27224.89%
E01014072	Redhill-Ross Road	43020.96%



This map is based upon Ordnance Survey material with the permission of Ordnance Survey on behalf of the Controller of Her Majesty's Stationery Office © Crown copyright. Unauthorised reproduction infringes Crown copyright and may lead to prosecution or civil proceedings. (100024168) (2010).

Older People

- Increasing numbers of older people who need social care esp dementia
- Increasing numbers of older people living in income deprived households

Health and well being

- Long and healthy life expectancy
- Falling premature mortality which remains lower than nationally
- Significant health inequalities exist between those living in the most and least deprived areas, specifically:
 - 65% more likely to die of chronic lower respiratory diseases.
 - 59% more likely to die from coronary heart disease, and 159% more likely to die prematurely (i.e. before age 75) from coronary heart disease.
 - 24% more likely to die from cancers.

Health and well being

- Cancer and coronary heart disease are the county's biggest killers
 - **Smoking** remains the single most important cause of premature death, ill-health and hospital admission in Herefordshire
 - **Obesity is** emerging as a major contributory factor to poor health, disability and premature death
 - New analysis shows that **physical inactivity and obesity levels** are major causes of coronary heart disease and stroke
- **Alcohol misuse** is a growing problem, particularly young people
- The **number of 18 - 64 year olds with disabilities** in Herefordshire is likely to increase by 2026
- Reliance on and support for **carers** is currently a challenge and will only get worse in future years

Safer communities

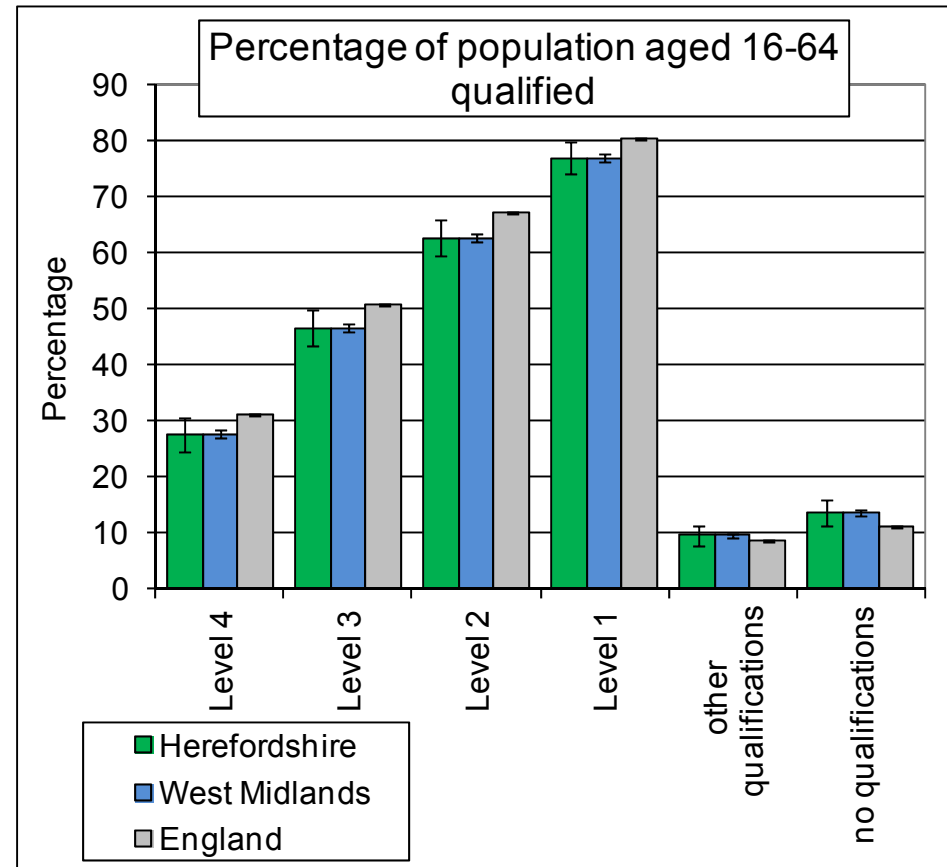
- ASB is a concern in Hfds but numbers of incidents decreasing
- Downward trend in numbers of fires, numbers killed in fires are very low and hoax calls are being reduced
- Crime is low and is decreasing although risk of increase due to recession
- Alcohol misuse a growing problem
- Increasing reoffending rates
- Road Traffic Collisions still a burden on services but numbers KSI reducing, concerns around young people and drink drivers but not so much motorcycles
- Falls are the largest cause of admission to hospital due to an accident

Economy

- Low productivity/low wage economy
- Net exporter of workers
- High employment rate due to high self-employment
- Unemployment remains high, but.....more people claim benefits because they are unable to work for health reasons
- Broadband, mobile phone and other infrastructure can be a challenge
- The age profile of the workforce is changing
- Projected decreases in employment in agriculture and manufacturing

Qualifications, skills gaps and migrant labour

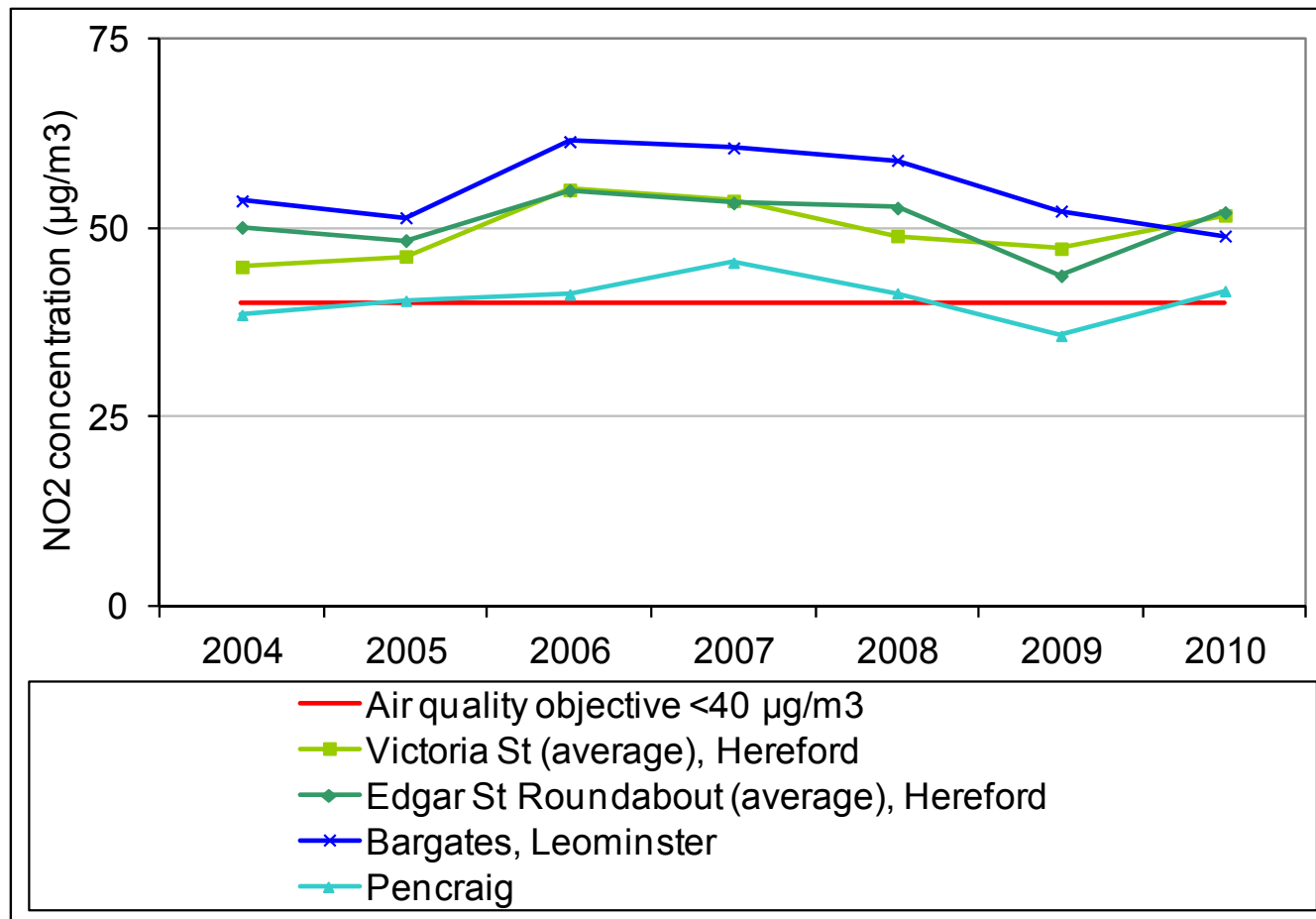
- Low qualification rates
- Some vacancies hard to fill because of a lack of skills – particularly in skilled trades
- Skills gaps in current workforce
- Some young people poorly prepared for work
- Still a demand for migrant labour



Transport and Environment

- Congestion in Hereford City
- Climate change and volatility in energy prices will pose challenges for both businesses and residents in future
- Households are producing less waste and recycling more
- Access to nature and environment are important
- Management wildlife sites had improved in 2010

A deterioration in air quality (NO₂)



Stronger communities

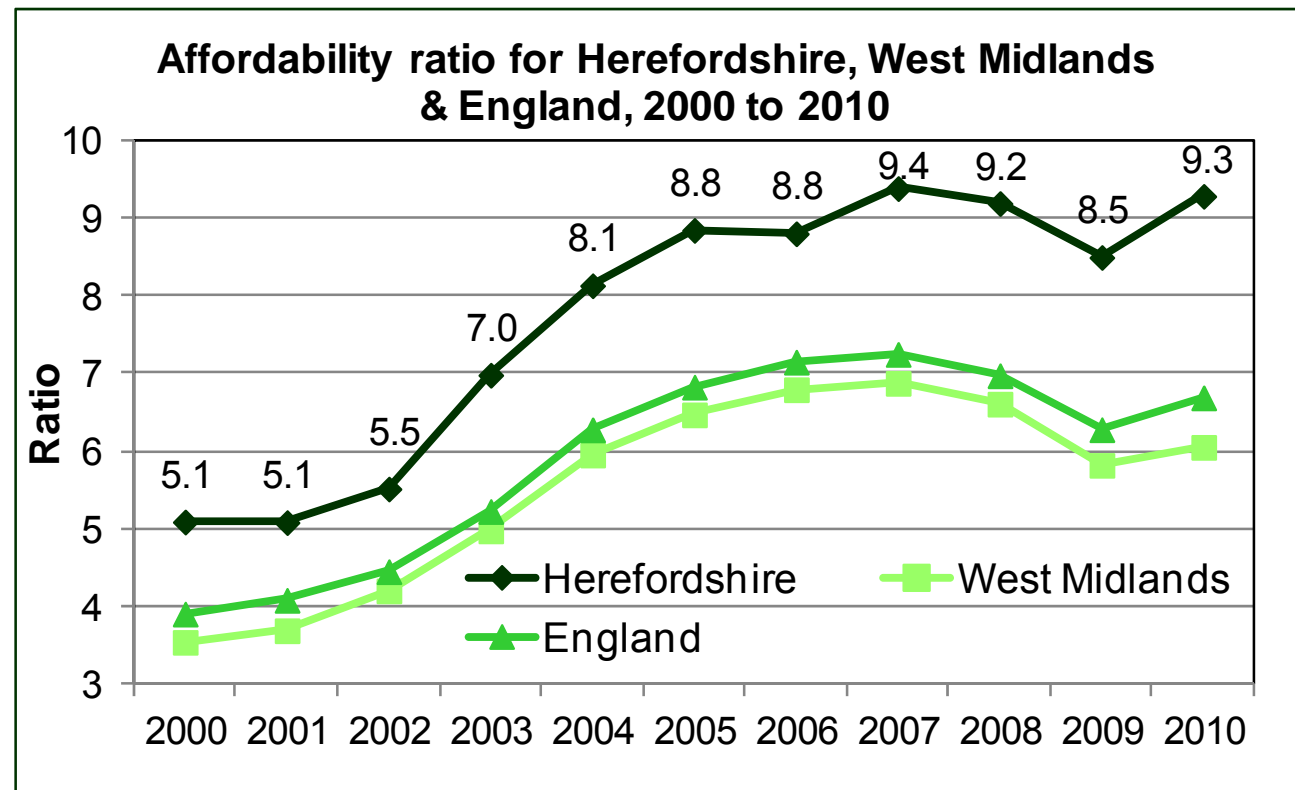
- Language can be a problem for some minority groups
- Access to finance was the biggest problem facing third sector organisations in 2010
- Residents of villages most likely to think they can influence decisions
- Access to services (geographical)

Housing

- Affordability of housing (rental and purchase)
- Decrease in the number of people applying and accepted as homeless
- Condition of private rented accommodation
- Increasing need for certain types of suitable accommodation

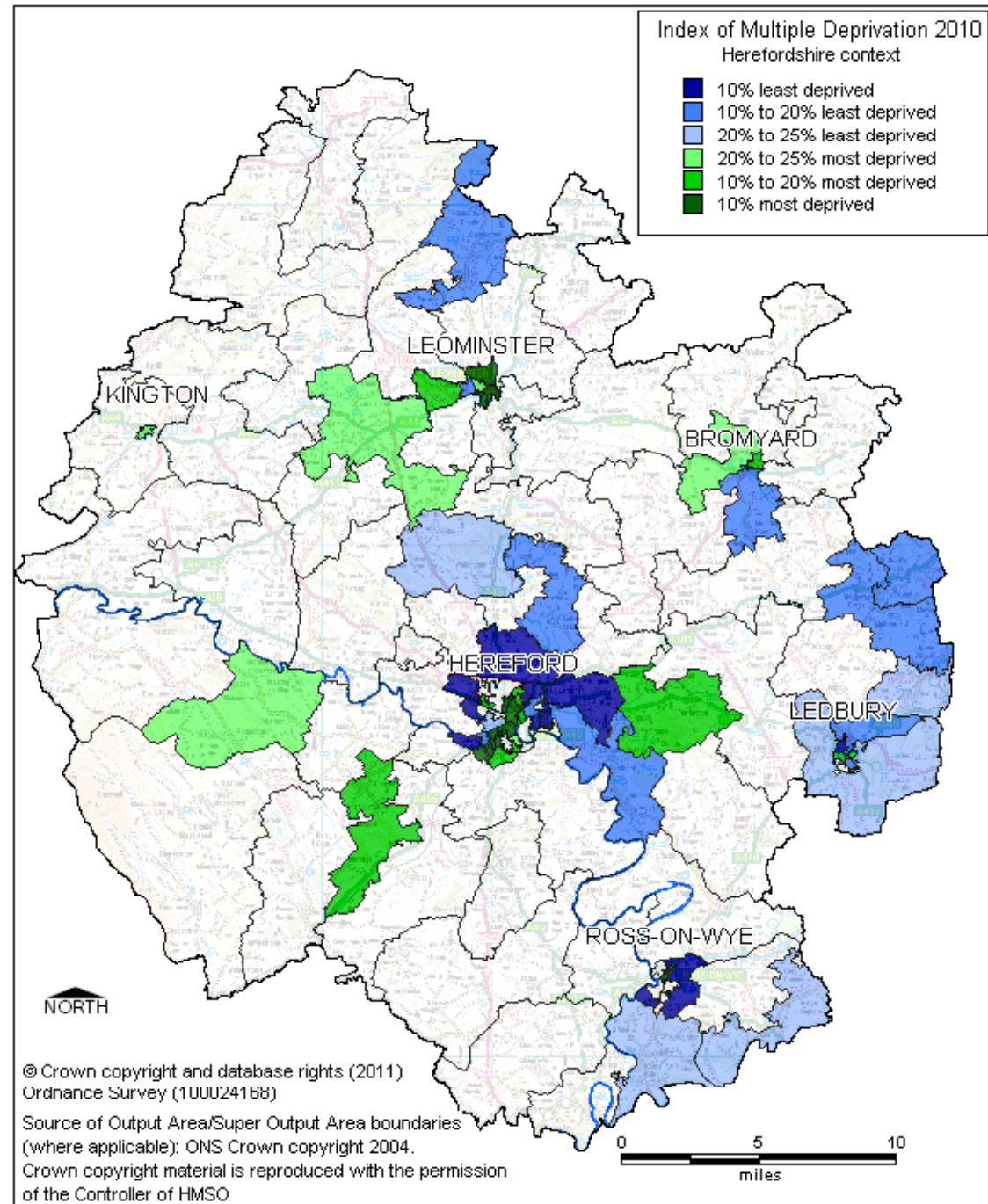
Housing affordability

- Ownership
- Rental
- Supply



Deprivation & inequality

- Deprivation in urban areas, but also smaller pockets rural areas
- Inequalities in a number of areas
 - Children in poverty
 - CYP attainment
 - Life expectancy
 - Mortality from particular diseases



Marmot indicators!



Break (10 mins)

Overview of F&F website

www.herefordshire.gov.uk/factsandfigures

Future – integration

- Merge the JSNA and State of Herefordshire Report in 2012
- Integrated Evidence Base:
‘Understanding Herefordshire’
- Online resource with an annual overview/key findings & recommendations document.

Future – integration (2)

- Scoping now within new information architecture & systems
- Reviewing usability Feb – May 2012
- Creating & publishing new evidence
Nov 2011 – May 2012
- Move content to new website Aug – Dec
2012

Group discussion

1. Where do you get your evidence from currently?
2. What do you use it for?
business planning, funding bids, needs assessments?
3. What would you find useful?
Key findings? Summaries? SWOT analysis? Raw data?
4. What level of detail do you require?
Raw data, below county, organised by topic/theme?