

## ETHNICITY

The most recent estimates of Herefordshire's population by ethnic group are for mid-2009. These are 'experimental estimates' published by ONS, which provide a breakdown of the number of people in each ethnic group by age and gender.

These estimates suggest that in mid-2009, 5.9% of Herefordshire's total resident population was from an ethnic group other than 'white: British' (10,600 people). The proportion is still very low compared to both England and the West Midlands region as a whole (17.2% and 17.6%, respectively), but reflects a growth of 141% in the BAME (Black, Asian & Minority Ethnic) population from 2001 compared to just 2% in the county's total population. In England overall the BAME population grew by 40%, compared to a total population growth of 5%.

The BAME population increased in all regions of England between 2001 and 2007. The largest percentage increases were seen outside of London, particularly in those starting from a relatively small base number in 2001. The West Midlands region as a whole saw a lower rate of growth than all regions except London, although it still has a higher proportion of its population from BAME groups than these others.

As can be seen from Table 1, the largest BAME group in Herefordshire is 'white: other' (4,300), accounting for just over two fifths of the county's BAME population, followed by 'Asian or Asian British' (2,000) and 'mixed' (1,400). The 'white: other' group has had the largest increase in number (2,400 extra individuals since 2001) followed by 'Asian or Asian British' (1,600 extra since 2001).

Historically, Gypsy and Traveller communities were thought to form the biggest single minority ethnic group in Herefordshire. There are no official statistics of numbers in Gypsy and Traveller communities in the county, but the latest estimates suggest there are between 800 and 900 individuals.<sup>1</sup> They would be expected to be counted in the 'white: Irish' or 'white: other' ethnic groups in the ONS estimates.

**Table 1: Numbers and percentages of the total resident population for each ethnic group in 2009 and change in population of each ethnic group between 2001 & 2009**

Ethnic group	Herefordshire		England	Change in Herefordshire, mid-2001 to mid-2009	
	Number in 2009	% of total pop'n in 2009	% of total pop'n in 2009	Change in no. in ethnic group	% change in ethnic group
White: British	168,600	94.1%	82.8%	-1,900	-1%
White: Irish	1,000	0.6%	1.1%	+200	+25%
White: Other White	4,300	2.4%	3.6%	+2,400	+120%
Mixed	1,400	0.8%	1.8%	+700	+100%
Asian or Asian British	2,000	1.1%	6.1%	+1,600	+400%
Black or Black British	900	0.5%	2.9%	+800	+400%
Chinese	400	0.2%	0.8%	+200	+100%
Other Ethnic Group	500	0.3%	0.8%	+300	+150%
<b>Total Not 'White British'</b>	<b>10,600</b>	<b>5.9%</b>	<b>17.2%</b>	<b>+6,200</b>	<b>+140.9%</b>
<b>All People</b>	<b>179,100</b>	<b>100.0%</b>	<b>100.0%</b>	<b>+4,200</b>	<b>+2%</b>

Source: *Experimental estimates by ethnic group*, ONS. Crown Copyright 2011. Figs rounded to 100 so may not sum

Note that these estimates are based on the 2009 mid-year estimates of resident population, using the definition of an international migrant as someone who intends to

<sup>1</sup> Derived from *Gypsy & Traveller Accommodation Assessment: Shropshire, Herefordshire, Telford & Wrekin and Powys*, Centre for Urban & Regional Studies, University of Birmingham (July 2008). Available at: [www.herefordshire.gov.uk/housing/planning/35118.asp](http://www.herefordshire.gov.uk/housing/planning/35118.asp)

stay in the UK for at least a year. Therefore, short-term migrants will not be included in any estimates of the ethnic composition of the *resident* population.



Although around 6% of the county's total population in 2009 was estimated to be of BAME origin, it can be seen from the left-hand side of Table 2 that this proportion varies by age-group; from 9% of 16-29 and 30-44 year-olds to 3% of those aged 75+.

It is therefore unsurprising that the BAME population of Herefordshire has a younger age profile than the county's population as a whole: just over two-thirds (68%) of the BAME population is under 45 years old, compared to just half (50%) of the total population (see right-hand side of Table 2).

**Table 2: Herefordshire residents from an ethnic group other than 'white British' (i.e. of BAME origin) by age-group, mid-2009**

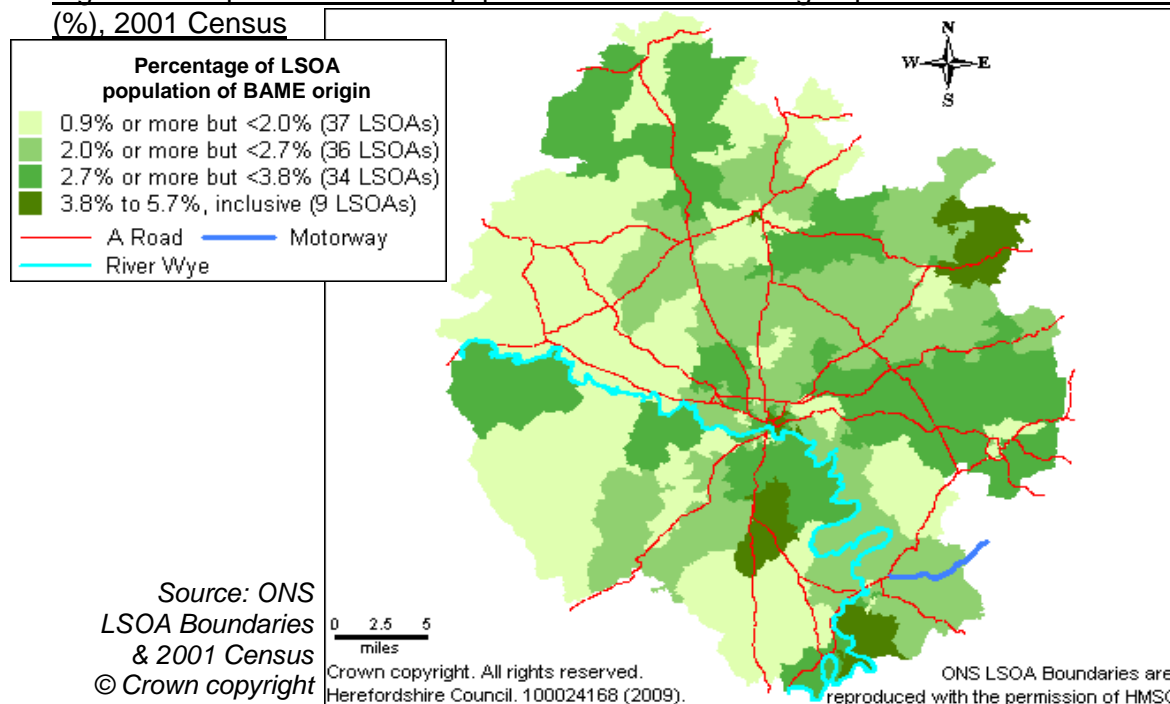
Age-group	People of BAME origin			People of all ethnic groups as a % of the total population
	Number in age-group	As % of total population in age-group	As a % of BAME population	
0-15	1,900	6.2%	17.9%	17.3%
16-29	2,300	9.4%	21.7%	13.8%
30-44	2,900	8.9%	27.4%	17.9%
45-64	2,300	4.4%	21.7%	29.3%
65-74	700	3.3%	6.6%	11.3%
75+	500	2.6%	4.7%	10.4%
All ages	10,600	5.9%	100.0%	100.0%

Source: *Experimental estimates by ethnic group, ONS. Crown Copyright 2010. Figs rounded to 100 so may not sum.*



The 2001 Census remains the only source of information about ethnicity for areas below county level. At this time, 51% of non- 'white: British' residents of Herefordshire lived in rural areas – slightly below the 55%<sup>2</sup> of the total population that did. Figure 3 shows variation around the county in the proportion of LSOA populations of BME origin.

**Figure 3: Proportion of LSOA population from an ethnic group other than 'white: British' (%), 2001 Census**



<sup>2</sup> Not comparable with the 54% quoted elsewhere as the figure here is based on Output Area level data.

Contact details

Research Team, Herefordshire Council

E-mail: [researchteam@herefordshire.gov.uk](mailto:researchteam@herefordshire.gov.uk)

Tel: 01432 260498