

Safer Herefordshire



Strategic Assessment 2010



Summary

Contents

	Page
1. Introduction	2
2. Performance and activities	
2.1 Performance in relation to PSAs, NIs and local targets – 2009-10	3
2.2 Summary of 2009/10 performance and YTD performance	3
2.3 Examples of activities: initiatives, operations, schemes	4
3. Synopsis/overview and future developments	6
3.1 An overview of crime, disorder and ASB trends in Herefordshire	6
3.2 Major developments and events	7
4. Crime, disorder, ASB and reassurance problems	8
4.1 Places - Where and when are some of our key problems?	8
4.2 Offending	10
4.3 Victims/Vulnerable	11
4.4 Reassurance	13
5. Strategic priorities	14

Appendices

- A List of strategic partners
- B Economic and social costs of crime

1. Introduction

The aim of the strategic assessment (SA) is to identify key crime, disorder, substance misuse and anti-social behaviour issues that affect Herefordshire. The assessment also considers what needs to be achieved to improve community safety and how the community can feel reassured and have confidence that their concerns and fears are being addressed.

Safer Herefordshire coordinates a multiagency approach to tackling emerging issues and to reduce crime, antisocial behaviour and to reduce the harm caused by alcohol and drug misuse. A list of strategic partners is included in *Appendix A*.

The Safer Herefordshire partnership strategic assessment includes information from a wide range of partner sources.

The strategic assessment is the tool for identifying emerging priorities and vulnerable locations and people. This involves scanning a wide range of partner data, where further analysis is required. It is this data that is included in the report, to identify emerging issues and vulnerable locations and people. Indeed, in section 4 the place where the crime and disorder takes place is analysed followed by analysis of the offender and the victim/vulnerable persons. Indicative priorities will be provided for consideration by the Safer Herefordshire strategy group in November 2010, to inform the forthcoming plan for 2011-12 and longer term priorities for Herefordshire.

The content of the SA in 2010 differs to those conducted in previous years. Following Home Office guidance, it endeavours to be more multi-agency in content and outlook. The full document is also a restricted document intended for use by Safer Herefordshire Strategy group only. This document is a summarised version of the main restricted document.

Acknowledgements

Thank you to all Safer Herefordshire partners for providing data, intelligence and assistance in the analysis of data for the partnership strategic assessment.

For further information about the strategic assessment please contact;
Safer Herefordshire, PO Box 4, Plough Lane, Hereford, HR4 0XH. Tel: 01432 383523

2. Performance and activities

2.1 Performance in relation to PSAs, NIs and local targets – 2009-10

Safer Herefordshire currently has six strategic priorities. Sitting beneath these priorities are a suite of targets which feed into the Home Office Public Service Agreements - PSA 23: Make communities safer, and PSA 25: Reduce the harm caused by alcohol and drugs.

The six priorities for Safer Herefordshire and Local Area Agreement (LAA) targets are;

Strategic Priority	LAA Indicator
Reducing Alcohol Harm	NI 39 To reduce alcohol- harm related hospital admission rates per 100,000 population. <i>This is a local LAA target.</i>
Reducing Drug Related Harm	NI 40 To increase the numbers of people in effective drug treatment by 6% by 2011 (Crack & Opiate users).
Road Safety	NI 47 To reduce the number of people killed and seriously injured in road traffic accidents on Herefordshire roads.
Reducing Anti Social Behaviour and improve perceptions of ASB	NI 21 Dealing with local concerns about anti social behaviour and crime issues by the local council and police.
Domestic Abuse	<i>Safer Herefordshire measuring NI32 and locally agreed targets, which are not included in the LAA.</i>
Reducing Re-Offending	NI 19 To reduce the rate of proven re-offending by young offenders by 10.3% by 2011. NI 30 To reduce the re-offending rate of prolific and priority offenders.

Reassurance is a cross-cutting theme across all of these strategic priorities.

2.2 Summary of 2009/10 performance.

PI	Description	2009/10 Outturn	09/10 RAG
NI15	Serious violent crime rate	0.69 per 1000 pop	N/A
NI16	Serious acquisitive crime rate	6.07 per 1000 pop	N/A
NI19	Reduce the rate of proven re-offending by young offenders	1.43	
NI20	Assault with less serious injury offences per 1,000 population, (<i>proxy for alcohol related violent offences</i>)	5.39 per 1000 pop	
NI21	Dealing with local concerns about ASB & crime issues by the council and police	N/A	
NI28	Knife crime rate	0.22 per 1000 pop.	
NI29	Gun crime rate	0.08 per 1000 pop.	
NI30	To reduce the re-offending rate of prolific and priority offenders by 19% by 31 March 2009	76 proven reoffences	
NI32	Repeat incidents of Domestic Violence	16.8%	N/A
NI34	Domestic Violence Homicide	0	
NI39	Reduce alcohol-harm related hospital admission rates	1352.6 per 100,000 pop	
NI40	Increase the numbers of people in effective drug treatment by 6% by 2011 (<i>Crack and Opiate users</i>)	537	
NI47	Reduce the number of people killed or seriously injured in road traffic accidents on Herefordshire roads	105	
NI 111	Reduce First time entrants to the Youth Justice System aged 10-17 by 5% by 2010	152	
NTA PI	All adult drug users recorded as being in effective treatment	638	
NTA PI	Percentage of individuals completing treatment drug free		
NTA PI	Percentage of individuals retained in treatment over 12 weeks or with a care planned discharge	89%	
Local PI	Reduce anti-social behaviour by 10% by 2011	11,606 incidents	
Local PI	Reduce incidents of criminal damage by 10% by 2011	2,061 incidents	
Local PI	Reduce alcohol-related domestic abuse offences recorded by 5% (as a proportion of total DA related offences) by 2011	39.6%	

Local PI	Reduce the number of violent crimes recorded in Herefordshire by 5% by 2011	2,555 crimes	
Local PI	Reduce the incidence of young people (< 25) as victims of crime by 5% by 2011	2,007 incidents	
Local PI	Reduce the incidence of young people (<18) as victims of violence against the person (VAP) by 6% by 2011	418 incidents	
Local PI	Reduce all recorded crime by 8% by 2011	10,329 crimes	

2.3 Examples of activities: initiatives, operations, schemes..and their impact.

SDVC accreditation and development

Herefordshire achieved Specialist Domestic Violence Court (SDVC) accreditation status in September 2009. The aim of the SDVC is to increase the effectiveness of the judicial system in providing:

- Protection and support to the victims and witnesses of domestic abuse;
- Appropriate sanctions to perpetrators;
- To further increase co-ordination of agencies, including the Crown Court, involved in supporting victims and witnesses and dealing with perpetrators.

An essential part of this process is the Multi Agency Risk Assessment Conference (MARAC) meetings, and the Independent Domestic Violence Advisors (IDVA), who support victims that have been assessed as being high risk domestic abuse cases. Ongoing development is continuing in this area.

Repeat addresses – complaints and complainants

Following the tragic circumstances of the Pilkington case and other similar cases, a standardised process for reporting repeat complaints and complainants to services (around crime and disorder) was commenced through Safer Herefordshire Multi Agency Tasking and Coordination (MATAC). During the Summer of 2010, a template was devised for partners to provide information on their top addresses that they are in contact with on a monthly basis. This information is overlaid with Police data to ascertain if the same persons/addresses are known by more than one agency. Partners must be encouraged to continue and further develop this to ensure services are sharing information actively and appropriately.

20/20 Vision

Through MATAC, Safer Herefordshire is developing a 20:20 Vision scheme. This involves identifying our 'eyes and ears' on the street, staff that work on the ground, and utilising them to spot issues, then report these issues and share intelligence. This scheme is about partners sharing their staff resources and utilising them in a manner to support everyone.

Integrated Offender Management (IOM)

In April 2010, Community Safety Partnerships were given a statutory responsibility to reduce reoffending. Safer Herefordshire is working to the following principles:

- All partners tackling offending and risk of reoffending together
- Delivering a local response to local problems
- Offenders facing their responsibility or facing the consequences;
- Making better use of existing (and proven) programmes across agencies
- All offenders at high risk of causing serious harm and/or re-offending are in scope for IOM.

Areas of offender management such as the Prolific and other Priority Offender scheme (PPO) and the Drug Intervention Programme (DIP) have already greatly contributed in reducing crime and disorder. IOM intends to build upon this and tackle more offenders, giving them the support they need to stop them committing further crime and disorder and re-integrate them into society.

User Involvement

Safer Herefordshire's Drug and Alcohol Reduction Coordinator undertakes monthly service user involvement sessions at DASH and annual meetings with carers to obtain their views on

adult drug treatment services. Between December 2009 and October 2010, 44 drug users were actively engaged with. One drug user represented Herefordshire at the National Treatment Agency's Regional Service User and Carer Forum. Feedback and recommendations from service users are collated and reported to treatment provider managers and commissioners on a quarterly basis to improve their service delivery. Results from both users and carers are analysed and incorporated into Safer Herefordshire's Adult Drug Treatment Needs Assessment. This ensures that adult drug treatment services are needs led and that service users and carers are involved in key aspects of decision making.

The Voice! Magazine is a key outcome of service user and carer involvement. This magazine is produced by Safer Herefordshire with contributions from drug users and carers. Two editions are produced annually and over 1000 copies are distributed to providers, carers and drug users county wide.

Fire attendances

After issuing data to Safer Herefordshire regarding Fire and Rescue Service callouts where children have temporarily been locked in premises, even inadvertently, Hereford & Worcester Fire and Rescue Service agreed to amend their policies to ensure the Police are always notified of these incidents. This was discussed at MATAC during October 2009. The Police reiterated the need to report any cases of child neglect, abuse or abandonment to either managers or the Police direct, to ensure children are safeguarded.

From monthly data provided to Safer Herefordshire by the Fire and Rescue Service, the Police overlaid their data regarding deliberate fires and built a comprehensive database of addresses. This resulted in targeted Police patrol routes being established to counteract the situation. There was a slight increase in arson incidents during the end 2009/early 2010, with the majority of cases being between 4pm–10pm. Special Constables patrolled these areas, for an extra uniformed presence. Two male individuals were identified, both for arson related incidences.

Targeted Action Against Graffiti (TAAG) project:

Between November 2009 and April 2010, the TAAG campaign took place involving Safer Herefordshire, Amey, the Community Protection Team and West Mercia Police, as part of a NI21 bid to remove graffiti from Council and, if appropriate, private property. This involved engaging with schools and a school poster competition, local media and radio adverts. A small task and finish group coordinated the project. Hotspots were identified across the county, where graffiti was highlighted as being a problem by the public. Face-to-face surveys were carried out during the clean up. Outcomes were that all areas were cleaned, a clearer reporting mechanism was promoted to report graffiti and enforcement through covert cameras to catch any potential offender – which actually resulted in drug dealing being captured and arrests being made (*an unexpected outcome*). Members of the public were positive about the campaign, 7 areas across the county were cleaned. To date, all of the areas have stayed clean.

Gumdrop campaign

A joint 6-month trial between Safer Herefordshire, Community Protection Team and Amey to educate people about the correct disposal of chewing gum waste in Hereford City centre. As part of a national Keep Britain Tidy campaign, using Gumdrop (a chewing gum recycling initiative) recycles used chewing gum into tyres, pens, mobile phones cases etc. The aim of the campaign (ongoing until January 2011) meets the ASB and community reassurance priorities. Launched on 18th August by MP Jesse Norman, Councillor Jarvis and the Mayor of Hereford, Councillor Toon. The campaign has received a huge amount of local, national and international media attention. Some Gumdrops were initially vandalised and stolen but since then no further problems have been reported. The Gumdrops are well used, probably as a result of a good local advertising campaign.

Speed Enforcement

The Safer Roads partnership (SRP) continue to provide speed enforcement at core sites and introduced a new scheme aimed at addressing community concerns over the impact of speeding drivers on road safety and quality of life issues. There are currently two Community Concern sites in the County at Fromes Hill and Ashperton. Data from the Frome's Hill site indicate that the site has not had a significant impact, however Ashperton has seen a reduction in speeds. A further 6 mobile camera sites are being introduced on the A49 in order that a 'route approach' can be adopted as the number of KSI's on this road accounted for 46% of the total fatalities in 2009.

3. Synopsis and future developments

3.1 An overview of crime, disorder and ASB trends in Herefordshire.

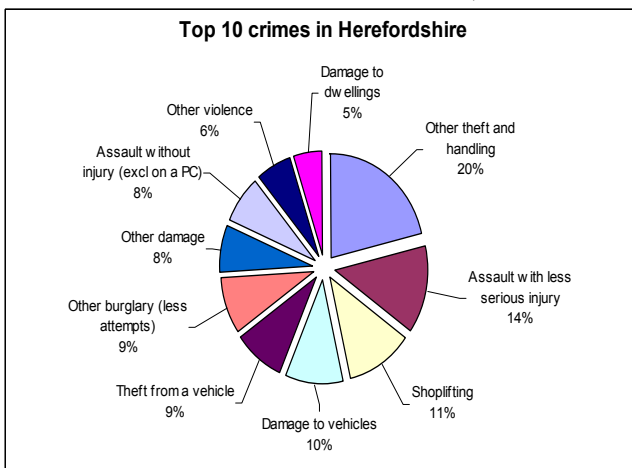


Fig 1: Herefordshire Top 10 crimes

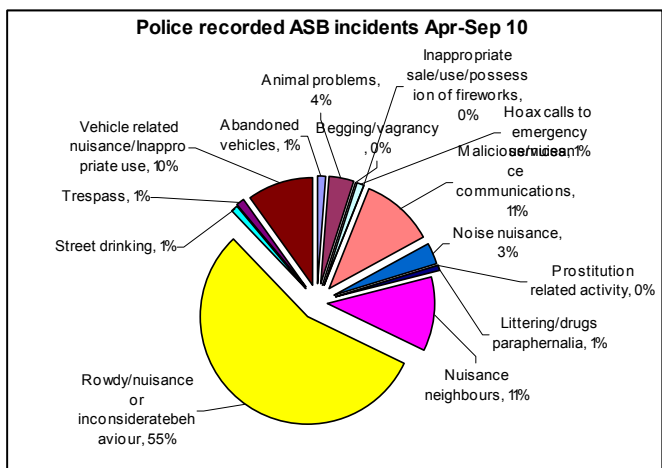


Fig 2: Police ASB incidents

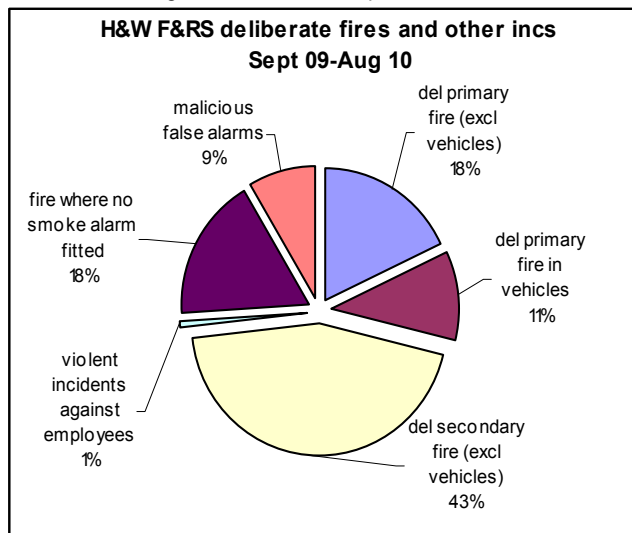


Fig 3: Deliberate Fires and other F&RS incidents

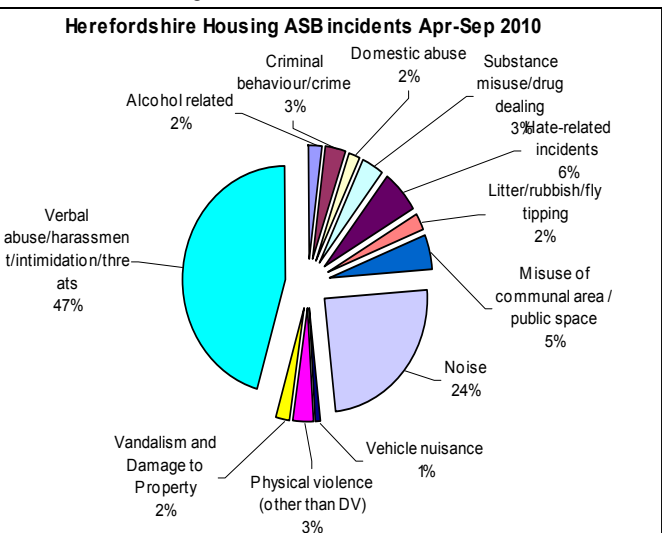


Fig 4: Herefordshire Housing ASB

Fig 1: Iquanta report of Top 10 crimes

Other theft and handling represents 20% of the top 10 crimes in Herefordshire, according to latest Iquanta pareto.

Fig 2: Police recorded Anti-social Behaviour

5722 ASB incidents recorded between 1st April and 30th September 2010;

- 55% (n=3130) were recorded as Rowdy or Inconsiderate Behaviour.
- 11% (n=657) nuisance neighbours.
- 11% (n=604) malicious/nuisance communications.

Fig 3: Hereford and Worcester Fire and Rescue Service - Arson and other incidents

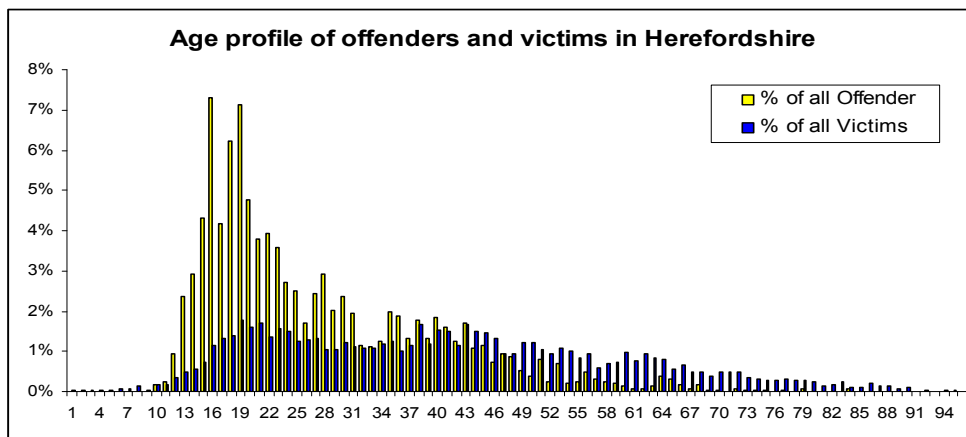
Deliberate secondary fires (excl vehicles) account for 43% of incidents recorded by the Fire and Rescue Service.

A primary fire is a major fire involving property, casualties or involving 5 or more fire appliances

A secondary fire does not involve property, casualties or rescue, attended by 4 or less fire appliances. Derelict buildings and abandoned vehicles are also classed as secondary fires.

Fig 4: Registered Social Landlord (RSL) ASB

Herefordshire Housing ASB incidents to September show 47% were verbal abuse/harassment/threatening behaviour.



Age profiles for all offenders and victims in Herefordshire from January 2009 to October 2010 show a peak between ages 16 and 24 years = young people.

3.2 Major developments and events

Major events and developments due to take place over the coming year may influence future patterns of crime, disorder and ASB in both a positive or negative sense. It is therefore vital that Safer Herefordshire is involved in the developments from the initial stage of the projects, to ensure that any plans do not create additional crime and disorder.

Regeneration:

Old Livestock Market

A circa 240,000 sqft retail and leisure development to be built on the current site of the Hereford Livestock Market. Anchored by a multi-screen cinema, major foodstore, and department store, with several other retail and restaurant units accompanying public open space. Planning permission to be sought by the end of 2010 with construction to begin, subject to planning, in summer 2011. Completion is anticipated to be late 2012 / early 2013.

Housing development

- 300 houses (105 affordable homes) currently being developed in Holmer area, just off the Roman Road Attwood lane turn, completion expected 2014. Planning permission in place.
- 115 houses (40 affordable houses) due to commence in Holmer Trading estate, just off College Road, will commence in 2001 over 18 month period. Planning permission in place.
- Herefordshire Futures (formerly ESG) will provide approx 1000 homes of which 350 will be affordable, although housing development not expected for at least 5 years.

The Shaping Our Place 2026 Local Development Framework Preferred Option document (September 2010) sets out proposals for growth, although it should be stressed that this is currently in the consultation phase and is to be formally agreed by Cabinet and Full Council in early 2011. It suggests that 18,100 units can be delivered by 2026, these will be both housing sold on the open market and affordable housing.

The preferred option document, which includes areas for development in Holmer area, Whitecross/King's Acre area, Three Elms area, Bromyard, Ross-on-Wye and Ledbury can be located at <http://www.herefordshire.gov.uk/housing/planning/47521.asp>.

Seasonal events

It is acknowledged that there are certain periods when ASB, crime and domestic abuse may see an increase, for example, Christmas and Easter periods, Bank Holidays, Halloween and sporting events such as the World Cup.

Festivals

Herefordshire is seeing an increasing number of summer festivals occurring across the county, including The Big Chill, Nozstock and others. Increasing numbers of festival organisers are seeking to promote weekend-long musical events within the county (including national and local organisers). Whilst acknowledging the success of past events with low numbers of crimes recorded (reductions year on year with the Big Chill), such events do have an impact on crime with theft, robbery and sexual assault recorded.

4. Crime, disorder, ASB and reassurance problems

This section focuses on crime, disorder and anti-social behaviour analysing the data from 3 perspectives;

- the place the incidents take place
- the offenders
- the victims or vulnerable persons involved.

This will enable Safer Herefordshire to get a true picture of crime, disorder and anti-social behaviour in the county.

4.1 Places - Where and when are some of our key problems?

Indices of Multiple Deprivation (IMD) – Crime domain

The crime domain includes 4 separate indicators that are combined to give an overall score and rank of deprivation for each Super Output Area (*refer to Herefordshire Council State of Herefordshire Report*); which include the following crime categories:

- Burglary
- Theft
- Criminal Damage
- Violence

There are 11 areas in Herefordshire which fall within the most deprived 25% nationally in relation to this domain. These include areas of Hereford City, Leominster and Ross-on-Wye. The IMD is in the process of being updated again for Autumn/Winter of 2010.

Herefordshire – All crime

There were 7289 crimes recorded in Herefordshire between January and mid October 2010. The largest offence was: other criminal damage which represented 19% of all crimes, largely in Hereford City followed by other thefts representing 15% of all recorded crimes.

49% of All Crime was committed in Hereford City, with smaller hotspots in the Market Town areas of Leominster and Ross-on-Wye.

The types of crime mostly committed in the Hereford City were predominantly;

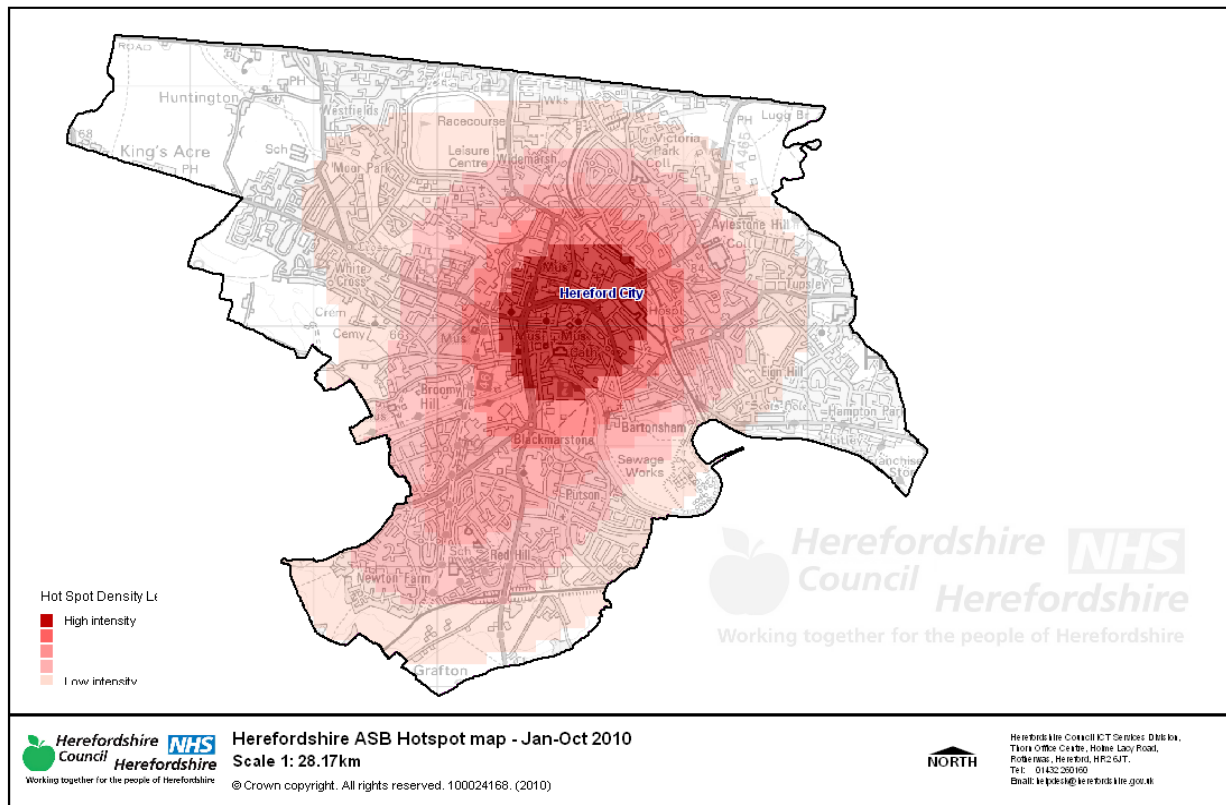
- theft
- assault
- criminal damage

Repeat locations for crime are mainly focused on thefts in stores and in clubs in the City, and at the County Hospital.

Anti-Social Behaviour (ASB)

The most prominent area for ASB is **Hereford City Centre** area, followed by **Leominster Town** and **Ross-on-Wye Town**. The hotspot map below highlights the most prominent area which is Hereford City Centre using ASB data since January 2010.

Of the 8446 ASB incidents recorded between January and October, 14% occurred in Hereford City Centre.



Crime and the night-time economy

Herefordshire Police reported that the percentage of alcohol related violence against the person was 49% (a slight increase on previous reporting period) and remains focused around the city/town centres late at night on Friday/Saturday.

Analysis by the Police shows that during the past 12 months, 54% of incidents occurred on a weekend. 42% occurred between the hours of 10pm and 3am. There is also a peak in the number of crimes in the afternoon.

Shoplifting

According to Iquanta (Home Office Policing Performance tool), shoplifting is one of Herefordshire's top 10 crimes, and is slightly higher than average against our peers. There were 573 shoplifting incidents reported to the Police since November 2009, 43% of which were in Hereford City Central area. Four premises have been identified as being targeted repeatedly.

During the period July to September 2010, Herefordshire CCTV noted 165 thefts (from person of retail premise), out of a total 1469 incidents noted via the cameras through the CCTV's across the county.

Deliberate Fires

There were 151 deliberate primary and secondary fires (including vehicles) between September 2009 and August 2010. By mapping the data, a hotspot in the South Wye was noted. Deliberate fire data continues to be provided to Police analysts to overlay with their data and intelligence.

Peak times for deliberate primary and secondary fires (including vehicles) between 7pm and 9pm.

Admissions to hospital due to alcohol misuse

Herefordshire PCT data shows an increase in the number of hospital admissions of mental and behavioural disorders due to alcohol misuse compared to the previous year, particularly dependence syndrome and acute intoxication.

Young people and crime location

At the end of 2009 Safer Herefordshire conducted some research on behalf of the Children's Trust Positive Contributions Group to establish hotspots where young people have either been the victims or perpetrators of crime. Police data obtained for the period 2007 to 2009 was used and a report written with hotspot maps. There were 1053 crimes involving young people between 2007 and June 2009. The areas of HR2 had the most crimes (340), followed by HR1 and HR4.

Key points to note:

- 49% of all crime occurred in Hereford City Centre with smaller hotspots in Leominster and Ross-on-Wye.
- ASB mainly occurred in Hereford City Centre, Leominster and Ross Town.
- Over the past 12 months in Hereford City Centre, 54% of crimes occur on Friday, Saturday and Sunday.
- In relation to Hereford City Centre pubs and clubs there appears to be a peak of incidents between 11pm to 2am.
- According to Iqanta, shoplifting is one of Herefordshire's top 10 crimes.
- There was a hotspot of deliberate fires in parts of South Wye area of Hereford.
- The HR2 postcode area appeared to be prominent for alcohol-related issues.

4.2 Offending

The National Crime Audit March 2010 report estimates that, in 2008-09, the cost of looking after short-sentenced prisoners, not including education and healthcare, was £286 million. Short-sentenced prisoners are most commonly convicted of theft and violence offences. On average, they have 16 previous convictions, which is more than any other group of offenders. They are also more likely to re-offend: around 60 per cent are convicted of at least one offence in the year after release. Based on previous work by the Home Office, it is estimated that, in 2007-08, re-offending by all recent ex-prisoners cost the economy between £9.5 billion and £13 billion. As much as three quarters of this cost can be attributed to former short-sentenced prisoners: some £7 billion to £10 billion a year.

Repeat offending: Police data for January to October 2010 shows of the 2325 offenders of crime, 391 offended on more than one occasion. The most prolific location for offenders is in Hereford City.

Data from West Mercia Probation, the National Offending Management Service and the Youth Offending Team were also used for the strategic assessment.

Key points to note:

- Re-offending rates for age band 21-29 was higher than predicted.
- Higher than predicted rate of re-offending for criminal or malicious damage.
- A common crime for offenders was theft from shops.
- 40% of offenders are unemployed (Probation data).
- A significant number of young offenders resided in the HR2 postcode area.
- The majority of young offenders are male aged between 15 and 18 years (80% of the total).
- Further analysis on offending and repeat offending will be conducted as part of IOM requirements.

4.3 Victims / Vulnerable

Victim profiling from Police data shows that during the period January to October 2010, there were 5111 victims of crime.

- 55% were male, and 45% female.
- 84% of victims were of British nationality. Victim nationalities varied, 10% were not known.

The most common crimes of which people were victims;

- Other criminal damage (20.3%)
- Other thefts (17.3%)

Hotspots in Hereford City Centre and smaller hotspots with less intensity in Leominster and Ross-on-Wye.

Repeat victimisation by location appears to show similar data to that already seen, with a noted victim hotspot over Eastnor near Ledbury, which is the location of the Big Chill festival.

9% were repeat victims of crime. The most common crime type, for repeat victims was other criminal damage.

Young people as victims of crime

The aforementioned report showed the majority of victims of crime resided in the HR2 general postcode area.

Safeguarding children

The results of the Care Quality Commission (CQC) and OFSTED inspection of young people Safeguarding provision in Herefordshire is expected any time.

The Hidden Harm Group continues to meet; the focus of the activity is on raising awareness and providing training for professionals that may come into contact with possible cases of hidden harm.

Domestic Abuse

Women's Aid figures for April to August 2010 shows Herefordshire received 63% of the total calls to the Herefordshire and Shropshire Helpline (Herefordshire total 510), which is up from 446 in the same period in 2009. The majority of calls for Herefordshire came from women experiencing domestic abuse. A small number were received from men.

Police analysis on domestic abuse in Herefordshire shows a small increase in the number of domestic violence incidents in the period October 09 to April 10 compared to the same period the previous year.

Data from Multi Agency Risk Assessment Conferences (MARAC) and Specialist Domestic Violence Courts (SDVC) were included in the strategic assessment.

Drug Misuse and Drug Treatment Prevalence

The latest Glasgow University prevalence estimate of the number of problem drug (opiate and /or crack cocaine) users (PDU's) aged between 15–64 in Herefordshire is 879.

It is estimated that out of the total of 879, 798 of those people use opiates and 256 of them use crack. Of the estimated total, 235 are aged 15 to 24 years, 352 PDU's aged 25 to 34 years and 292 PDU's are aged 35 to 64 years.

(The Centre for Drug Misuse Research University of Glasgow (2010) based on data relating to the financial year 01 April 2008 to 31 March 2009).

Alcohol admissions to hospital due to alcohol misuse

During the period April 2009 to June 2010 there were 549 hospital admissions due to mental and behavioural disorders due to use of alcohol.

- 38% of admissions were due to dependence syndrome
- 32% of admissions due to acute intoxication
- 88 admissions (note: not persons) were recorded as residing in the South Wye area of Hereford.
- 73% of the 549 admissions were male.
- Age ranges peak between 55 and 60 years.

North West Public Health Observatory produced a Local Alcohol Profile for England (LAPE) report. The profile of alcohol-related harm produced in December 2009 shows that Herefordshire's alcohol specific hospital admissions for under 18s is significantly worse compared to the England average; this does not include attendances at A&E. For further information refer to www.nwph.net/alcohol/lape/

Violent crime and the impact of violent crime on the victim and services

Iqanta reports to 31st August show a small increase in violent crime in Herefordshire between June and August compared to March to May 2010, and up slightly for the same period in 2009.

The Home Office estimate (in 2003-04) the average cost of violence against the person to be £10,407 (*see Appendix B for breakdown*).

Violent crime and young people

Police performance data for period April to September 2010 shows a reduction in the number of young people as victims of crime compared to the same period in 2009.

- 27% were victims of actual bodily harm and other injury.
- 12% other theft.
- 11% assault without injury.

The number of victims of violence against the person under the age of 18 between April and September 2010 was down by 43 incidents compared to the same period in 2009.

- 59% of these were ABH and other injury.
- 26% assault without injury.

Road Safety

Headlines from The Herefordshire Council 2009 Casualty summary report;

Overall, 2009 was another relatively successful year in the reduction of road casualties within Herefordshire and targets for 2009 were surpassed which indicates that the authority should successfully meet the 2010 target reductions set by Central Government in 2000. However, whilst targets for the year have been surpassed it is apparent that 2009 suffered a marginal increase in the year on year figures compared to 2008. In some respects, this is not surprising given the exceptionally low casualty returns that 2008 exhibited however this does give cause for concern and it is important that we understand and identify the underlying issues which may need to be tackled in future.

Overall "young road users" (16–25 age group) remain a concern with disproportionately high representations within the KSI casualty statistics, as could be seen in 2008. More worrying is their over representation in the fatal casualties, with this age group accounting for 54% (7 of 13) of road fatalities within the County.

2009 saw a notable increase in "drink drive" related accidents compared to previous years, with more than double the number (30 compared to 14) recorded in 2009 compared to 2008. This number is also the highest recorded since 2005.

Whilst motorcycle casualties still account for 18% of the overall KSI casualty figure, these have exhibited a marginal decrease compared to 2008, with small reductions in all severities for this vehicle class.

Points of note:

- Out of 5111 victims of crime, 45% are female and 55% male.
- As with crime areas, victims are focused in HR2, HR6 and HR9 postcode areas.
- Domestic Abuse calls to Women's Aid helpline have increased compared to same period last year.
- Work needs to be done around successful completions in drug treatment.
- Work needs to be done around the 41% of PDU's who have been in drug treatment for four years or more.
- Halo system suggests 45.44% are either unemployed or economically inactive.
- The age ranges of those admitted to hospital due to alcohol misuse appear to peak from age 39 to 60.
- 73% of the alcohol related hospital admissions were male.
- Herefordshire alcohol admissions for age 18 is significantly worse compared to England average (LAPE report).
- Road users (16–25 age group) remain a concern with disproportionately high representations within the KSI casualty statistics
- Notable increase in “drink drive” related accidents compared to previous years

4.4 Reassurance

Safer Herefordshire is very conscious of ensuring residents and visitors feel safe whilst living, working or visiting the county. Reassurance has been and will continue to be a common thread through all projects, communication activities and future work.

Safer Herefordshire's communication plan was held up as best practice by Government Office for the West Midlands in 2010, and as a partnership we want to ensure residents are aware that Herefordshire is one of the safest counties in the country, and we will strive to ensure it remains that way.

It is essential that we obtain the views of Herefordshire residents to ensure we are tackling the areas that most concern or affect them, to improve quality of life for all.

We use various methods for obtaining the views of local residents. This year the following surveys took place;

- West Mercia crime and safety survey
- Safer Herefordshire Parish Councils questionnaire
- PACT meetings

The key issues arising from these surveys relating to crime and disorder are;

- **Road safety and speeding traffic**
- **Alcohol use and underage drinking**
- **Rubbish or litter lying around**
- **Anti-social behaviour**

The top 5 priorities that Herefordshire residents feel should be dealt with first (from the crime and safety survey) were;

- **Speeding traffic**
- **Rubbish or litter lying around**
- **Cars parked inconveniently, dangerously or illegally**

- **Groups of people loitering or hanging around in public places**
- **People using drugs**

PACT issues

Issues that relate to community safety that were raised by local residents are as follows;

Ledbury:

- local policing matters
- underage drinking regulations and proxy purchasing.

Leominster:

- vehicle nuisance at Bridge Street car park
- anti-social behaviour
- drink related noise nuisance at the Ducking Stool public house.

Belmont:

- anti-social behaviour in Ludlow Place.

Further information on each of the PACT meetings are available on the Herefordshire Council website.

Safer Herefordshire is also involved in the Community Led Planning process and this will be a key development for future working at local level.

5. Strategic priorities

A list of emerging priorities as identified from this strategic assessment was presented to the Safer Herefordshire Strategy Group in November 2010. The confirmed priorities are under review and will be presented in the forthcoming Strategy for 2011-12.

Appendix A

Safer Herefordshire - Partnership members

The Partnership consists of numerous organisations who all work together to achieve our priorities. The partnership Strategy Group is made up of representatives from each of the following organisations:

Herefordshire Council

Herefordshire Housing (representing Registered Social Landlords)

Herefordshire Primary Care Trust

Hereford & Worcester Fire and Rescue Service

The Herefordshire Partnership

The Bulmers Foundation (representing the Third Sector)

West Mercia Constabulary

West Mercia Police Authority

West Mercia Probation Trust

Worcestershire & Herefordshire Youth Offending Service

The Economic and Social Costs Of Crime Against Individuals And Households 2003/04

Authors: **Richard Dubourg, Joe Hamed, Jamie Thorns** Date published: **June 2005**

The first estimates of the costs of crime were published in 2000 by the Home Office in 'The Social and Economic Costs of Crime'. It was recognised in this report that, although the estimates were 'state of the art' at that time, methodological improvements could be made in some areas. This report updates the estimates using improved methods of estimating.

Unit costs for crimes

Crime	Average cost (2003)	2009 (est.) *
Violence against the person	£10,407	£12,269
<ul style="list-style-type: none"> • Homicide • Serious wounding • Other wounding 	<ul style="list-style-type: none"> • £1,458,975 • £21,422 • £8,056 	<ul style="list-style-type: none"> £1,716,921 £25,248 £9,495
Sexual offences	£31,438	£37,052
Common assault	£1,440	£1,697
Robbery	£7,282	£8,582
Burglary in a dwelling	£3,268	£3,852
Theft	£844	£995
<ul style="list-style-type: none"> • Not vehicle • Of a vehicle • From a vehicle • Attempted vehicle theft 	<ul style="list-style-type: none"> • £634 • £4,138 • £858 • £510 	<ul style="list-style-type: none"> £747 £4,877 £1,011 £601
Criminal damage	£866	£1,021

In 2003 the revised estimates of the unit costs of crime against individuals and households exhibit a broadly similar pattern to the costs estimated in 2000.

- Based on Bank of England average inflation rate of 2.7% per year 2003 – 2009.

Appendix B

Home Office estimated costs of crimes 2003/04.

Table 2.1: Estimated average costs of crimes against individuals and households in 2003/04 by crime type and by cost category

Offence category	Costs in anticipation of crime (£)		Costs as a consequence of crime (£)							Costs in response to crime (£)		2003 prices Average Cost (£)
	Defensive Expenditure	Insurance Administration	Physical and Emotional Impact on Direct Victims	Value of Property Stolen	Property Damaged/ Destroyed	Property Recovered	Victim Services	Lost Output	Health Services	Criminal Justice System		
Violence against the person	1	1	5,472	-	-	-	9	1,648	1,347	1,928	10,407	
Homicide	145	229	860,380	-	-	-	2,102	451,110	770	144,239	1,458,975	
Wounding	1	1	4,554	-	-	-	7	1,166	1,348	1,775	8,852	
Serious wounding	1	1	4,554	-	-	-	7	1,166	1,348	14,345	21,422	
Other wounding	1	1	4,554	-	-	-	7	1,166	1,348	978	8,056	
Sexual offences	3	5	22,754	-	-	-	32	4,430	916	3,298	31,438	
Common assault	0	0	788	-	-	-	6	269	123	255	1,440	
Robbery	0	21	3,048	109	12	- 19	16	1,011	483	2,601	7,282	
Burglary in a dwelling	221	177	646	846	187	- 22	11	64	-	1,137	3,268	
Theft	59	52	192	281	69	- 36	1	10	-	217	844	
Theft - not vehicle	-	33	118	175	17	- 13	1	3	-	301	634	
Theft of vehicle	546	370	800	2,367	349	- 542	1	47	-	199	4,138	
Theft from vehicle	116	50	266	240	126	- 11	1	20	-	50	858	
Attempted vehicle theft	65	21	194	-	154	-	1	11	-	65	510	
Criminal damage	13	36	472	-	212	-	2	6	-	126	866	