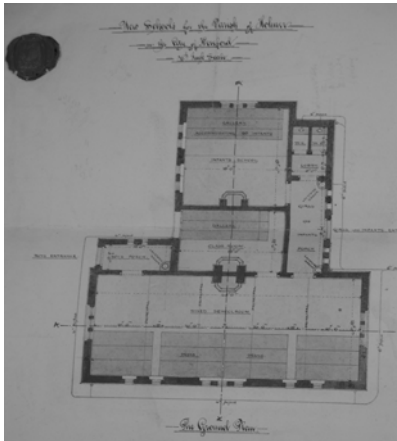
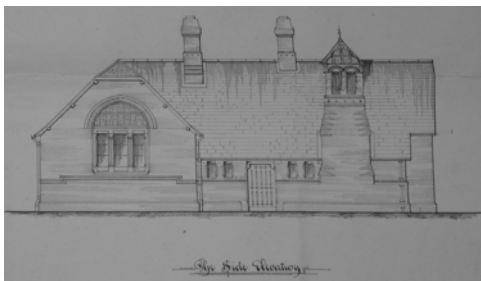
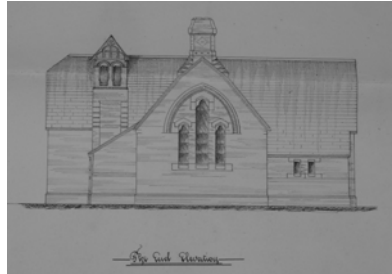
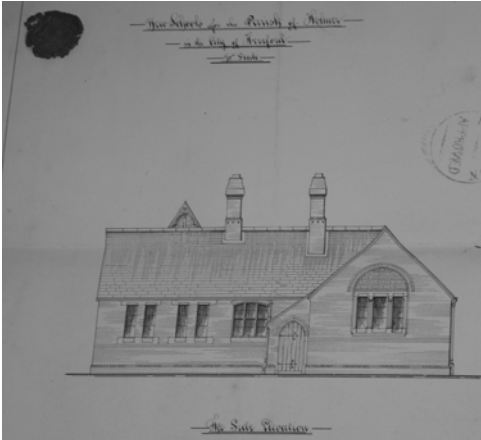




HEREFORDSHIRE  
COUNCIL

# HEREFORDSHIRE ARCHIVE SERVICE



**SCHOOL RECORDS**  
AVAILABLE AT  
HEREFORDSHIRE  
RECORD OFFICE



## INTRODUCTION

If a school has closed, the records may have been deposited at the Record Office. Deposited records can include admission registers, log books, school magazines, photographs and other school memorabilia. All of these can provide you with an insight into your ancestor's school career, including their behaviour and childhood illnesses, as well as giving details of parents and siblings.

This leaflet provides a list of school log books and admission registers held at Herefordshire Record Office. Please note that unless otherwise stated, these are primary schools.

If a school is still open, the records are most likely to be retained by the school, so initial enquiries should be made to the relevant Head teacher.

**Log books** were kept by the Head teacher who kept records of the curriculum and any unusual day-to-day events. They may contain details of illnesses, prize-giving and punishments.

**Admission registers** can give a pupil's date of birth, date of admission to the school and the name and address of their parents or guardians. You may also find the date and their reasons for leaving.

## **PLEASE NOTE**

The information provided in this booklet is intended as a guide only and the following points should be noted:

- ◆ Some access restrictions will apply.
- ◆ The dates given are covering dates only and some gaps may occur.
- ◆ This list was correct at time of print, but may be subject to change. For full details of all records held pertaining to a particular school or schools, please contact us.
- ◆ A CARN (County Archive Research Network) reader ticket is required in order to consult any original material at the Herefordshire Record Office. This can be obtained free of charge on production of identification showing your name and current address.

For further information please contact us. Details can be found at the back of this booklet.

## **AUTHORISATION**

If authorisation is required, contact should be made in the first instance to:

Head of Policy and Resources  
Education and Conference Centre  
Blackfriars Street  
Hereford  
HR4 9ZR

Telephone 01432-260802

Please note - access restrictions may apply.

<b>SCHOOL</b>	<b>LOG BOOKS</b>	<b>ADMISSION REGISTERS</b>
Abbeydore	-	1939-1942
Acton Beauchamp	1878-1961	1906-1961
Adforton	1875-1967	1874-1956
Allensmore	-	1909-1957
Aston Ingham	1938-1982	1931-1982
Avenbury	1924-1960	1877-1960
Aymestry & Leinthall Earles	1873-1961	1880-1961
Aymestry Onneslo	1911-1965	1871-1964
Ballingham	1933-1953	1874-1948
Belmont (RC)	1939-1947	1928-1929
Berrington & Eye	1873-1968	1873-1968
Bishops Frome	1863-1977	1923-1977
Bishopstone	1869-1894	-
Bishopswood	1871-1956	1904-1955
Blakemere & Preston	1923-1965	1864-1965
Brampton Bryan	1902-1963	1912-1962
Bredwardine	1873-1968	1870-1968

Please note - access restrictions may apply.

<b>SCHOOL</b>	<b>LOG BOOKS</b>	<b>ADMISSION REGISTERS</b>
Breinton	1875-1957	-
Brimfield	1867-1968	1892-1968
Brockhampton, Ross	1900-1976	1908-1975
Bromyard Grammar	-	1902-1948
Bullingham	1889-1967	1878-1967
Byford	1873-1963	1946-1963
Byton	1877-1962	1910-1962
Canon Pyon	1924-1991	-
Coddington	1873-1961	1887-1949
Collington	(Please see Thornbury with Edwin Ralph & C'ton.)	
Colwall Hill Infants	1906-1982	1955-1982
Cradley Boys	1875-1909	-
Cradley Girls	1864-1909	-
Craswall	1878-1957	1878-1957
Croft	(Please see Yarpole & Croft)	
Credenhill Temp. Infants	1964-1970	-
Dinedor	1940-1951	1940-1951



Old Village School, Eardisland (HRO ref. S4/5/33)



Old School, Pembridge (HRO ref. S4/5/33)

Please note - access restrictions may apply.

<b>SCHOOL</b>	<b>LOG BOOKS</b>	<b>ADMISSION REGISTERS</b>
Dorstone	1873-1966	1880-1966
Downton	-	1877-1947
Eardisland	1875-1979	1947-1979
Eardisley	1903-1953	1880-1952
Eaton Bishop	1863-1888	1893-1951
Edwin Ralph (Please see Thornbury with E. Ralph & Collington)		
Egleton (Please see Stretton Grandison & Egleton)		
Ewyas Harold	1866-1989	-
Eye (Please see Berrington & Eye)		
Eyton	1899-1957	1874-1957
Felton (Please see Preston Wynne & Felton)		
Foxley	1952-1961	1952-1961
Hentland	1863-1959	1888-1959

Please see page 15 for a separate list of the Hereford City Schools.

Please note - access restrictions may apply.

<b>SCHOOL</b>	<b>LOG BOOKS</b>	<b>ADMISSION REGISTERS</b>
Hope Mansel	1902-1953	1938-1953
Hope under Dinmore	1881-1973	1887-1900*
Upper Hill, Dinmore	1897-1951	1922-1951
How Caple	1916-1959	1872-1959
Humber	1875-1928	1875-1947
Huntington - Goff's Endowed	1875-1907	-
Kenchester - Lady Southampton's School	1929-1970	1874-1970
Kentchurch	1874-1948	1905-1949
Kilpeck	1898-1971	1929-1971
Kings Pyon	1873-1959	1928-1946
Kington Primary School	1875-1985	1874-1975
Kington Secondary	1920-1950	1922-1962
Kington Mahollem	1864-1962	1860-1961
Ledbury Secondary	1960-1978	-
Leinthall Earles	(Please see Aymestry & Leinthall Earles)	

\* particulars of children entering school

Please note - access restrictions may apply.

<b>SCHOOL</b>	<b>LOG BOOKS</b>	<b>ADMISSION REGISTERS</b>
Leominster	1863-1921	-
Letton	1948-1955	-
Leysters	1871-1971	1869-1971
Linton	-	1875-1919 1946-1957
Little Hereford	1928-1966	1937-1967
Little Marcle	1906-1960	1910-1960
Llangarron	-	1932-1969
Llanwarne	1942-1957	1879-1957
Lyonshall	1882-1962	1863-1962
Mansel Lacy (see Yazor for early log book)	1895-1960	1903-1960
Marstow (Glewstone)	1873-1966	1873-1966
Mathon	1871-1948	1895-1945
Michaelchurch (Please see Pencoyd & Tretire with M'church)		
Much Cowarne	1862-1969	1901-1969
Much Dewchurch	1927-1982	-

Please note - access restrictions may apply.

<b>SCHOOL</b>	<b>LOG BOOKS</b>	<b>ADMISSION REGISTERS</b>
Much Marcle	1901-1965	1833-1966
Newton	1893-1961	1921-1961
Ocle Pychard	1874-1972	1914-1972
Orcop	1864-1964	1901-1965
Pembridge, Broxwood	1873-1962	1869-1961
Pencoyd & Tretire with Michaelchurch	1878-1967	1878-1967
Peterstow	1895-1967	1875-1967
Preston on Wye	(Please see Blakemere & Preston)	
Preston Wynne & Felton	1916-1972	1872-1972
Pudleston	1904-1982	1938-1982
Putley	1948-1962	1925-1962
Archenfield Royal Victoria B & F	1837-1843	-
Ross County Primary/Infants	1898-1922	-
Ross County Secondary	1944-1953	-
Ross Grammar School	1886-1943	1912-1925

Please note - access restrictions may apply.

<b>SCHOOL</b>	<b>LOG BOOKS</b>	<b>ADMISSION REGISTERS</b>
Ross, Walter Scott	-	1786-1836
Sellack	1897-1983	1874-1948
Staunton on Arrow	1935-1970	1901-1969
Staunton on Wye	1887-1920	-
Stoke Lacy	1895-1967	-
Storridge	1875-1946	-
Stretton Grandison & Egleton	1875-1964	1875-1964
Tarrington	1869-1947	-
Tedstone Wafer	1874-1963	1878-1952
Thornbury (with Edwin Ralph and Collington)	1926-1951	1893-1951
Titley	1873-1962	1873-1962
Tretire (Please see Pencoyd & Tretire with Michaelchurch)		
Turnastone (Please see Vowchurch & Turnastone)		
Ullingswick	1874-1972	1874-1948
Upper Sapey	1907-1969	1902-1969
Upton Bishop	1894-1972	1873-1972

Please note - access restrictions may apply.

<b>SCHOOL</b>	<b>LOG BOOKS</b>	<b>ADMISSION REGISTERS</b>
Upton Bishop, Gayton	1929-1950	1914-1950
Vowchurch & Turnastone	1874-1968	1875-1967
Wellington Heath	1875-1961	1883-1960
Wellington Heath, Hope End	1874-1955	1930-1954
Welsh Newton	1931-1971	1902-1971
Weston under Penyard	1932-1979	1869-1951
Whitney	1911-1932	1866-1962
Wigmore	1863-1989	1860-1948
Woolhope	1905-1959	1904-1948
Yarkhill	1870-1970	1905-1970
Yarpole & Croft	1867-1967	1913-1968
Yazor & Mansel Lacy	1872-1894	-

Please note - access restrictions may apply.

<b>SCHOOL</b>	<b>LOG BOOKS</b>	<b>ADMISSION REGISTERS</b>
<b>Hereford City schools begin</b>		
All Saints Infants	1871-1983	1871-1983
All Saints Girls	1871-1876	1871-1876
All Saints Boys	1871-1876	-
Aylestone School	-	1952-1975
Barrs Court	1955-1967	-
College of Art	-	1885-1902
High School for Boys	-	1912-1947
High School for Girls	-	1952-1975
St. Owen's	1905-1983	1921-1983
St. Peter's	1871-1983	1916-1983
Training College	-	1904-1928
Uplands Residential School	1954-1969	-
Wartime Nursery Classes	1943-1946	-
Whitecross Nursery	1948-1980	-
<b>Hereford City schools end</b>		

## OTHER EDUCATION RECORDS WE HOLD FOR A SCHOOL MAY INCLUDE:

Please note - access restrictions may apply.

Attendance registers

Building records and plans

Correspondence - miscellaneous

Celebrations and events

Financial records

Minutes:

    Governing Bodies

    Local Education Authority

    Sub Committees

Miscellaneous items

Photographs

Punishment books

Pupil files (closed for 100 years)

Property inventories

School magazines

School fees

Staff registers

School meals

Stock and stores accounts

Student Union records - Hereford Training college



Old Grammar School, Weobley (HRO ref. S4/6/2)

## **INFORMATION LEAFLETS AVAILABLE**

Those leaflets marked \* are available in a large print version and some leaflets are available in Braille. Please ask for details.

- ◆ Visiting the Herefordshire Record office\*
- ◆ A Guide to Family History Research
- ◆ A Guide to House History Research
- ◆ A Guide to the Microform Holdings of Herefordshire Record Office
- ◆ Feeling At Home in the Searchroom
- ◆ Herefordshire Record Office Research Service
- ◆ Saturday Opening - Dates\*
- ◆ Terms of Deposit
- ◆ Current Charges
- ◆ Facilities Available for People with Disabilities\*

FOR FURTHER INFORMATION  
PLEASE CONTACT:

Herefordshire Archive Service  
Herefordshire Record Office  
Harold Street  
Hereford  
HR1 2QX

Tel 01432-260750

Fax 01432-260066

Email [archives@herefordshire.gov.uk](mailto:archives@herefordshire.gov.uk)

or visit our website at:  
[www.herefordshire.gov.uk/archives](http://www.herefordshire.gov.uk/archives)

