

THE ETHNICITY OF HEREFORDSHIRE'S POPULATION

The most recent estimates of Herefordshire's population by ethnic group are for mid-2007. These are 'experimental estimates' published by ONS, which provide a breakdown of the number of people in each ethnic group by age and gender.

These estimates suggest that in mid-2007, 4.4% of Herefordshire's total resident population was from an ethnic group other than 'white: British' (7,800 people). The proportion is still very low compared to both England and the West Midlands region as a whole (16.4% and 16.9%, respectively), but reflects a growth of 77% in the BME (Black & Minority Ethnic) population from 2001 compared to just 2% in the county's total population. In England overall the BME population grew by 31%, compared to a total population growth of 4%.

The BME population increased in all regions of England between 2001 and 2007, with the largest percentage increases outside of London, particularly in those starting from a relatively small base number in 2001. The West Midlands region as a whole saw a lower rate of growth than all regions except London, although it still has a higher proportion of its population from BME groups than these others.

As can be seen from Table 15, the largest BME groups in Herefordshire are 'white: other' (2,700), 'Asian or Asian British' (1,400) and 'mixed' (1,200). Over half of the county's BME population are in the 'white: other' ethnic group. The ethnic group with the largest increase in number (1000 individuals) was 'Asian or Asian British'.

Historically, Gypsy and Traveller communities were thought to form the biggest single minority ethnic group in Herefordshire. There are no official statistics of numbers in Gypsy and Traveller communities in the county, but recent estimates suggest there are between 800 and 900 individuals.¹ They would be expected to be counted in the 'white: Irish' or 'white: other' ethnic groups in the ONS estimates.

Table 15: Numbers and percentages of the total resident population for each ethnic group in 2007 and change in population of each ethnic group between 2001 & 2007

Ethnic group	Herefordshire		England	Change in Herefordshire, mid-2001 to mid-2007	
	Number in 2007	% of total pop'n in 2007	% of total pop'n in 2007	Change in no. in ethnic group	% change in ethnic group
White: British	170,600	95.6%	83.6%	+ 100	+ < 0.5%
White: Irish	900	0.5%	1.1%	+ 200	+ 25%
White: Other White	2,700	1.5%	3.5%	+ 700	+ 35%
Mixed	1,200	0.7%	1.7%	+ 500	+ 71%
Asian or Asian British	1,400	0.8%	5.8%	+ 1,000	+ 250%
Black or Black British	800	0.4%	2.8%	+ 600	+ 300%
Chinese	400	0.2%	0.8%	+ 200	+ 100%
Other Ethnic Group	400	0.2%	0.7%	+ 200	+ 100%
Total Not 'White British'	7,800	4.4%	16.4%	+ 3,400	+ 77%
All People	178,400	100.0%	100.0%	+ 3,500	+ 2%

Source: *Experimental estimates by ethnic group*, ONS. Crown Copyright 2008. Figs rounded to 100 so may not sum.

Note that these estimates are based on the 2007 mid-year estimates of resident population, using the definition of an international migrant as someone who intends to stay in the UK for at least a year. Therefore, short-term migrants will not be included in any estimates of the ethnic composition of the *resident* population.

¹ Derived from *Gypsy & Traveller Accommodation Assessment: Shropshire, Herefordshire, Telford & Wrekin and Powys*, Centre for Urban & Regional Studies, University of Birmingham (July 2008). Available at: www.herefordshire.gov.uk/housing/planning/35118.asp



Although 4% of the county's total population in 2007 was estimated to be of BME origin, it can be seen from the left-hand side of Table 16 that this proportion varies by age-group; from 6% of 16-29 and 30-44 year-olds to just 2% of those aged 75+.

It is therefore unsurprising that the BME population of Herefordshire has a younger age profile than the county's population as a whole: two-thirds (67%) of the BME population is under 45 years old, compared to just half (50%) of the total population (see right-hand side of Table 16).

Table 16: Herefordshire residents from an ethnic group other than 'white British' (i.e. of BME origin) by age-group, mid-2007

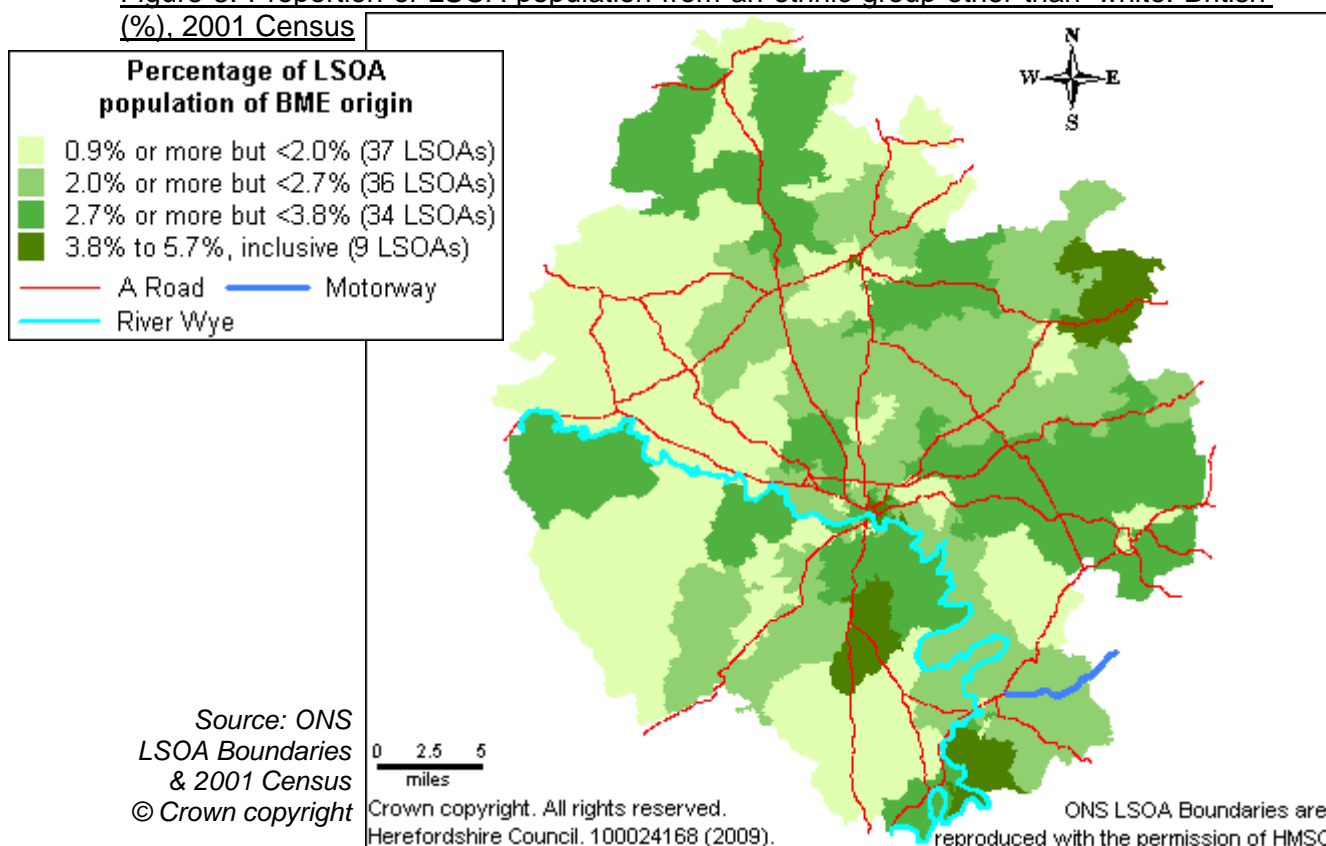
Age-group	People of BME origin		% in age-group	
	Number in age-group	As % of total population in age-group	Of BME population	Of total population
0-15	1,600	5.1%	20.5%	17.6%
16-29	1,500	6.1%	19.2%	13.8%
30-44	2,100	6.2%	26.9%	19.0%
45-59/64	1,600	3.6%	20.5%	25.2%
60/65-74	700	2.7%	9.0%	14.4%
75+	400	2.2%	5.1%	10.0%
All ages	7,900	4.4%	100.0%	100.0%

Source: Experimental estimates by ethnic group, ONS. Crown Copyright 2008. Figs rounded to 100 so may not sum.



The 2001 Census remains the only source of information about ethnicity for areas below county level. At this time, 51% of non- 'white: British' residents of Herefordshire lived in rural areas – slightly below the 55%² of the total population that did. Figure 17 shows variation around the county in the proportion of LSOA populations of BME origin.

Figure 3: Proportion of LSOA population from an ethnic group other than 'white: British' (%), 2001 Census



² Not comparable with the 54% quoted elsewhere as the figure here is based on Output Area level data.

Contact details

Herefordshire Council Research Team.

E-mail: researchteam@herefordshire.gov.uk

Tel: 01432 260498