

# Local Development Scheme

Fifth Review - June 2010



# Contents

	Page	
1	Introduction	
	The Local Development Scheme	1
	What's in the Scheme	1
	National, regional and local contexts	1
2	The Local Development Framework	3
3	Local Development Documents	
	Herefordshire Unitary Development Plan	5
	"Saved" policies in the Unitary Development Plan	5
	Progress on Local Development Documents	5
	Planning Documents outside the Local Development Scheme	6
	Three Year Programme for Local Development Documents	6
	Proposals Map	7
	Implementation Plan	7
	Parish Plans and Village Design Statements	7
	Joint working	8
	Schedule of Local Development Documents	9
	Core Strategy and Hereford Area Plan programmes	10
	Market Towns and Rural Areas Plan programme	11
	Development Plan Document profiles	12
4	Supplementary Planning Documents and Guidance	
	Supplementary Planning Guidance to the UDP	16
	Supplementary Planning Documents	16
5	Supporting Statement	
	How the Local Development Documents work together	17
	Evidence base	17
	Figure: The Local Development Framework for Herefordshire	19
	Sustainability appraisal, strategic environmental assessment and Habitats Regulations Assessment	20
	Delivering the Framework	20
	Council procedures for approval	21
	Monitoring and review	21
6	Contacts	
	Contacts for further information	22

# 1. Introduction

## *The Local Development Scheme*

This is the Council's Local Development Scheme - a guide to the documents setting out the Council's planning policies.

This is the fifth annual review of the scheme and was approved for submission by the Sustainable Communities Director of Herefordshire Council on 18<sup>th</sup> May 2010. The Government Office for the West Midlands notified their acceptance of the Local Development Scheme on 21<sup>st</sup> June 2010 and it came into effect immediately thereafter.

The Scheme lists existing planning policy documents and explains how the Council will organise and manage its forward planning work over the next three years as it continues to establish a Local Development Framework for Herefordshire.

This edition of the Scheme replaces its predecessor published in March 2009. The Scheme reflects the need to respond at the local level to proposals for housing and other growth in the County arising from the evidence base for the Regional Strategy and to maintain development plan coverage for Herefordshire beyond the end of the Unitary Development Plan period in 2011. These emerging proposals also reflect the Council's continuing participation in the New Growth Point programme, comprising a partnership with Government to ensure the delivery of sustainable growth.

The Scheme will be kept up to date through regular reviews as these are required and to maintain a three year forward programme.

## *What's in the Scheme*

In the Scheme you will find:

- A section explaining some of the terms used in the Local Development Framework system (section 2);
- A section setting out all the documents which form or will form part of the Local Development Framework in the period covered by this Scheme (section 3). The Scheme includes a schedule and profiles setting out the main stages in the preparation of the set of documents which will, together, form the Local Development Framework and replace the Unitary Development Plan;
- A section dealing with Supplementary Planning Guidance, explaining how this will relate to the Development Plan Documents (section 4); and
- A supporting statement, which explains how all these documents work together and how the Council will manage their preparation (section 5).

## *National, regional and local contexts*

The Council's planning policies have been developed within a well-established context at national, regional and local levels.

At national level, the Government's Planning Policy Statements set out policies on key land use matters. The Planning Act 2008 has made significant changes to the arrangements for Local Development Schemes. In particular Supplementary Planning Documents no longer form part of the formal Local Development Scheme. In order to continue a system of developer contributions to infrastructure the Government introduced the Community Infrastructure Levy to replace, at least in part, the current system of Planning Obligations under Section 106 of the principal Act. This will require the preparation of a new type of document, a Charging Schedule, which will not be a Development Plan Document in its own right (but will be the subject of a Public Examination and any consequent changes before it can be adopted). The new Regulations concerning the Community Infrastructure Levy came into effect in April 2010 and allow for a four year transition period before Planning Obligations under Section 106 of the Planning Act can no longer be used for pooled contributions. The

Council has yet to determine the detail of how it will take forward the Community Infrastructure Levy and replace the current SPD on Planning Obligations.

At regional level, the Regional Spatial Strategy (RSS) was published as Regional Planning Guidance for the West Midlands (RPG11) in June 2004, and Phase 1 of its review was adopted in January 2008. That version is now part of the statutory Development Plan and initially covered the period to 2021. The Phase 2 proposals will extend the plan period to 2026 and includes policies for housing, employment, town centres, transport and waste. It was the subject of an Examination in Public in April, May and June 2009 and the Inspectors' Panel Report was published in September 2009. It is anticipated at this stage that the evidence which underpinned the regional strategy will continue to be relevant will therefore form an essential context for Herefordshire's Local Development Framework, irrespective of the future prospects for the status of the regional planning strategy.

Other regional policy documents are also under review and new arrangements for Regional Governance are also anticipated during 2010, and the Regional Sustainable Development Framework will continue to provide an overall context for the consideration of sustainability issues in plan making. Notably, in March 2010, two "Interim Policy Statements" were produced by the then West Midlands Regional Assembly (now replaced by the Leaders' Board) on policies for Gypsies and Travellers and on Minerals Apportionments. This latter document had led to the need for an additional DPD to be added to the LDS, a DPD for Minerals and Waste issues to be prepared after the area DPDs have been adopted.

At local level, the Council's spatial planning policies in the Local Development Framework are being aligned with the priorities set out in the Herefordshire Community Strategy which is being refreshed as the Sustainable Community Strategy. Joint working through a task group comprising senior Council Members and Partnership representatives ensures an integrated approach. The Local Area Agreement was re-launched in October 2008 and provides the delivery plan for these strategies. The Local Development Framework has an important role to play in achieving the spatial elements of the outcomes defined in the Agreement.

The Local Development Framework must also reflect and integrate with other local plans and strategies including the Local Transport Plan and the Economic Development and Housing Strategies.

## 2. The Local Development Framework

This section is a brief guide to some of the main terms used in this Scheme.

The Local Development Framework (LDF) provides for the Council to prepare a series of Local Development Documents (LDDs).

There are several types of LDDs. The most important are Development Plan Documents (DPDs), with a key role in the determination of planning applications. Supplementary Planning Documents (SPDs) are no longer required to be in the Local Development Scheme but draft proposals for the likely programme of SPDs are included in Section 4 below for information. They offer further detail in support of DPD policies and proposals. Finally, there is the Statement of Community Involvement (SCI), which sets out how the Council will involve the community.

These and other terms are explained below.

AMR	Annual Monitoring Report	The Council's annual report to Government on progress in preparing the documents set out in the LDS, and on how far planning policies are being achieved.
CIL	Community Infrastructure Levy	A new provision brought in by the Planning Act 2008 which sits alongside Planning Obligation Agreements and enables development land value to be invested in infrastructure necessary to implement the Core Strategy
CIL – CS	Community Infrastructure Levy - Charging Schedule	The Charging Schedule sets out the basis and amount of CIL and is a document in the LDF although it is not a Development Plan Document as such.
HRA	Habitats Regulations Assessment	An assessment undertaken in accordance with European legislation to assess the impacts of a plan or policy on designated sites of ecological interest.
LDF	Local Development Framework	A portfolio of LDDs which collectively set out the spatial strategy for the Council's area, balancing land use pressures arising from economic, social and environmental demands.
LDD	Local Development Document	DPDs, SPDs and the SCI are all Local Development Documents, collectively forming the LDF.
LDS	Local Development Scheme	The three year programme for preparing DPDs.
PP	Parish Plans	These are not formally part of the Local Development Framework but are, none-the-less important to the Sustainable Community Strategy and may include issues common to both the SCS and the LDF. Where appropriate SPDs will refer to them.
RSS	Regional Spatial Strategy	Provides a spatial framework to inform the preparation of LDDs and Local Transport Plans by local authorities, and of other strategies and programmes that have a bearing on land use, in order to deliver a coherent framework for regional development. It is due to be replaced by a single Regional Strategy in 2010 which will carry forward current policies for the time being.

SA	Sustainability Appraisal	An assessment of the economic, social and environmental impacts of the policies and proposals in DPDs.
SCI	Statement of Community Involvement	Explains to local communities and other stakeholders how and when they will be involved in the preparation of LDDs. Herefordshire's SCI was adopted in 2007.
SCS	Sustainable Community Strategy	Drawn up by local partnerships to show how local areas will address social, economic and environmental issues. The Herefordshire Community Strategy was published in June 2006 and re-launched as a Sustainable Community Strategy in 2008.
SEA	Strategic Environmental Assessment	An assessment of the environmental impacts of the policies and proposals in DPDs.
SPD	Supplementary Planning Document	These give more detail about the policies and proposals in DPDs. Following the Planning Act 2008 they are no longer Development Plan Documents but they are included in the Local Development Framework.
SPG	Supplementary Planning Guidance	These were previously prepared to offer more detailed guidance to the Unitary Development Plan. The remaining SPGs will be superseded by SPDs as the Local Development Framework system is progressed.
VDS	Village Design Statements	These have the same status as Parish Plans but tend to be focussed on local design issues – and can therefore be influential in “Place shaping” at the local level.

### 3. Local Development Documents

#### *Herefordshire Unitary Development Plan*

The Herefordshire Unitary Development Plan (UDP) was adopted in March 2007. The UDP was prepared to ensure consistency with Government Planning Policy Statements. The Plan was also consistent with the Regional Spatial Strategy (RSS) for the period up to 2011 (the end date of the UDP). This particularly applies to the provision of housing overall and the Plan's housing strategy, to the Plan's employment policies, intended to help achieve rural renaissance, and to plan housing, city centre and transport proposals designed to support and reflect Hereford's role within the Strategy. Similarly the Plan's general policies on matters such as design, transport and the environment reflect principles set out in the Strategy. Throughout, the UDP has a strong emphasis on the delivery of sustainable development in the County, reflecting both the RSS and the Community Strategy for Herefordshire.

#### *"Saved" Policies*

The UDP has the status of a Development Plan Document. There is a formal process whereby policies are "Saved" if not replaced by the emerging LDF. The schedule of saved policies was approved by the Secretary of State in February 2010. The list of saved policies is published on the Council's website and takes into account the close links that exist between UDP policies, the RSS and the Sustainable Community Strategy, and the need to ensure effective planning control while successor documents to the UDP are put in place.

#### *Progress on Local Development Documents*

A full review of progress over the last year is included within the Annual Monitoring Report for 2008/09. In summary:

- The Core Strategy "Developing Options" consultation took place from June to August 2008 and elicited nearly 1,000 responses from stakeholders around the County. An analysis of the responses has been published on the Council's website.
- A Supplementary Planning Document on Archaeology and Development was adopted.
- The Annual Monitoring Statement for 2008/09 was prepared and submitted.
- The Growth Point bid for funds was renewed
- The Strategic Housing Land Availability Assessment was published in November 2009.
- Continuing work took place to establish the evidence base of the next generation of DPDs
- The analysis of all of the above has enabled the preparation of the Place Shaping Paper which was the subject of a full programme of public consultation in January, February and March 2010. The outcome of this, along with further development of the evidence base, will inform the submission version of the Core Strategy which is due to be prepared later in 2010.

Following changes in the Local Development Regulations (in June 2008) and the Planning Act 2008 revised arrangements will come into effect for Development Planning work. Thus the statutory elements of the Local Development Scheme for 2010 will comprise of the following documents:

1. The Core Strategy
2. The Hereford Area Plan (to include specific allocations for Hereford in its role as a Settlement of Significant Development)
3. A Market Towns and Rural Areas Plan (to include specific allocations for the County outside Hereford and its immediate environs).
4. A DPD for Minerals and Waste.

The **Core Strategy** will be accompanied by a **key diagram** to indicate general locations for the principal proposals. The other Development Plan Documents will include specific allocations and will each be accompanied by relevant proposals map which has its own status as part of the development plan. The four documents together will deal with the Place Shaping concept. The Core Strategy will deal with Place Shaping at the strategic level, explaining how the County as a whole is expected to be developed up to 2026. The allocations documents described below will do so at the local level (particularly by defining the detailed allocations of the plan). The Core Strategy will also set out an overall monitoring framework which will be taken forward in detail in the subsequent Development Plan Documents.

**Hereford Area Plan.** This will give effect to Hereford's status as a New Growth Point, and address the emerging RSS phase 2 review proposals for Hereford as a Settlement of Significant Development. Because the RSS provides specific guidance in terms of the balanced growth requirements at Hereford, a start can be made on this document whilst the Core Strategy is still in preparation. Its early preparation will confirm the feasibility of delivering growth, whilst the area-wide approach will allow the implications of growth proposals in a historic market town setting to be assessed comprehensively, including the identification of the necessary infrastructure. The Plan will seek to ensure that growth is accommodated in a way which recognises, supports and shapes Hereford's "sense of place".

**Market Towns and Rural Areas Plan.** Outside Hereford, the key theme is "Rural Regeneration" and it is very important that the role of the Market Towns and their relationship with surrounding rural areas is developed in a manner consistent with the Sustainable Community Strategy. Consequently a DPD will be needed to set out spatial planning policies required for the market towns and the wider rural areas. Pending its preparation and adoption, the saved policies and proposals of the UDP will provide the basis for detailed planning control in these areas, together with the Core Strategy (once adopted), the Regional Strategy and national planning policies.

**Minerals and Waste DPD.** The approval of the Interim Policy Statement on Minerals apportionments at regional level in March 2010 has changed the background to minerals policies significantly by increasing the proposed apportionment for sand and gravel by approximately 50%. This is very significant change and raises the possibility new site(s) needing to be opened up for production of sand and gravel to meet the Region's requirements up to 2026 and beyond. This will need to be reflected in the need to define Mineral Safeguarding Areas (which are required in any event by virtue of National Minerals Policy set out in MPS1). The most pragmatic way to deal with this is to enable, through the Core Strategy, a new Development Plan Document on Minerals to examine this issue in detail. With regard to Waste the responses to the Place Shaping Paper in early 2010 have indicated that in this area too more detailed policies may well be required, and hence it is prudent to allow for a dedicated DPD for Waste. These policy areas could usefully be combined into one DPD and hence this LDS makes provision for just such a DPD to be prepared after the area DPDs have been completed.

#### *Documents Outside the Local Development Scheme*

The change in the status of SPDs means that they are no longer required to be formally part of the Local Development Scheme, however, they remain important elements of the Local Development Framework as a whole.

It is proposed that the SPG "Design and Development Requirements" 2004 is replaced with a Design Code SPD which will become a county-wide statement of design standards which are

expected of development. This will take account of the requirements in the Planning Act 2008 to give specific consideration to climate change and design quality, to reflect more recent planning practice, and to provide a link between the place shaping elements of Parish Plans/Village Design Statements and the Local Development Framework. In this way the Place Shaping agenda can be delivered at the strategic level by the Core Strategy, at community level by the two allocations DPDs, and at a site specific level in this new SPD. It will take the form of a "Design Code" and apply to the whole county.

Other SPDs may also be progressed as resources allow.

An Infrastructure Delivery Plan will also be required to sit alongside the Local Development Framework to set out how key elements of the strategy will be achieved. This will require working with the Local Strategic Partnership and will involve work on the Community Infrastructure Levy Charging Schedule and a review of the Planning Obligations SPD following the new regulations published in April 2010.

#### *Three year programme for Local Development Documents*

The programme of forward planning work for the next three years from April 2010 comprises the following documents in the Local Development Scheme:

- Core Strategy
- Hereford Area Plan
- Market Towns and Rural Areas Plan
- Minerals and Waste DPD

And the following other documents outside the Local Development Scheme

- Community Infrastructure Levy Charging Schedule
- Replacement of the Planning Obligations SPD
- Design Code for Herefordshire SPD
- Development Briefs and/or Master Plans as required for individual sites

The proposed timetable for the Development Plan Documents is set out in detail in the Schedule, Programme and Profiles on the subsequent pages of this document. The programme assumes that work on the Phase 2 review of the RSS, essential to establishing a strategic context for the Council's Core Strategy, proceeds to a conclusion during 2010.

The programme also takes account of the conformity requirements arising under the planning system, particularly in that the Core Strategy needs to be established ahead of other Development Plan Documents, and reflects the need to give priority to the development of the evidence base for the LDF in providing a sound foundation for Local Development Documents.

#### *Proposals Map*

The Proposals Map currently comprises the UDP Proposals Maps, amended as required following the Secretary of State's decision on the Saved Policies. The Map will be updated over time as new Local Development Documents are adopted.

#### *Infrastructure Delivery Plan*

A specific element of the three main DPDs identified above will be an Infrastructure Delivery Plan to set out the likely timetables (and funding sources) of critical infrastructure provision. This will be prepared with the Local Strategic Partnership to ensure a consistency of approach with the Sustainable Community Strategy and the Local Area Agreement.

### *Parish Plans and Village Design Statements*

Parish Plans and Village Design Statements are not part of the Local Development Framework but are very important at a local level. Part of the purpose of the proposed Design Code for Herefordshire is to create a (non-statutory) chain of conformity between the Local Development Framework and Parish Plans and Village Design Guides.

### *Joint working*

Informal joint working is anticipated with Worcestershire County Council over the Minerals and Waste DPD to ensure compatibility with Worcestershire's Waste DPD (and because of the shared joint contract for Municipal Waste) and, similarly, informal joint working will be required with Shropshire and Worcestershire over the Minerals DPD. Herefordshire is part of the "Western Housing Market Area" for strategic housing purposes with Shropshire and Telford, and additionally there is a partnership with the same authorities plus Powys in respect of Gypsies and Travellers. In addition to this pattern of collaborative working it is not envisaged that any formal joint working with other local planning authorities in the preparation of local development documents will be required. Liaison with the Brecon Beacons National Park Authority and Powys will continue in respect of cross boundary planning issues arising at Hay-on-Wye/Cusop. Due regard will be paid to emerging LDFs for adjoining authority areas and to the Wales Spatial Plan in drawing up local development documents.

## Schedule of Local Development Documents to be Prepared

Document title	Status	Description	Chain of conformity	Key elements of Stakeholder Involvement	Public Participation on Key Options	Submission to Secretary of State	Public Examination	Adoption
<b>Development Plan Documents which form part of the Local Development Scheme</b>								
Core Strategy	Development Plan Document (DPD)	Sets out the vision and objectives for the LDF, together with the spatial strategy.	Must be in general conformity with the RSS	(Issues and Options – September 2007) (Developing Options: June – August 2008 )	January – March 2010	April 2011	2011	2011
Hereford Area Plan	Development Plan Document (DPD)	Sets out proposals for the delivery of sustainable housing and other growth at Hereford, including regeneration proposals within the urban area.	Core Strategy	Issues Consultation January – March 2010	September - November 2011	October 2012	2013	2013
Market Towns and Rural Areas Plan	Development Plan Document (DPD)	Sets out proposals for the delivery of sustainable housing and other growth in the parts of the County outside Hereford with an emphasis on Rural Regeneration.	Core Strategy	Issues Consultation January – March 2010	September - October 2011	October 2012	2013	2013
Minerals and Waste Plan	Development Plan Document (DPD)	Sets out detailed proposals for meeting the Council's minerals apportionments and for managing waste	Core Strategy	Issues consultation 2011	2013	2013	2014	2015
<b>Documents Outside the Local Development Scheme but part of the Local Development Framework</b>								
Design Code for Herefordshire	Supplementary Planning Document (SPD)	Provides further planning guidance place shaping at the community level	Core Strategy	April – May 2011	N/A	N/A	N/A	2012
Community Infrastructure Levy Charging Schedule	Implementation document for the Core Strategy	Provides clear guidance on securing the means to implement infrastructure projects necessary for the overall strategy	Core Strategy	September – November 2011	N/A	N/A	N/A	2012
Replacement Planning Obligations SPD	Supplementary Planning Document (SPD)	Provides further planning guidance in respect of planning obligations for affordable housing and other site specific contributions not covered by the CIL	Core Strategy	September – November 2011	N/A	N/A	N/A	2012

## Programme for Development Plan Documents

	2010												2011												2012												2013											
	J	F	M	A	M	J	J	A	S	O	N	D	J	F	M	A	M	J	J	A	S	O	N	D	J	F	M	A	M	J	J	A	S	O	N	D	J	F	M	A	M	J	J	A	S	O	N	D
<b>Core Strategy</b>																																																
Issues consultation took place in September to October 2007																																																
Developing Options consultation took place in June to August 2008																																																
Public participation on key options	█																																															
Preparation of submission DPD	█				█																																											
Publication of Submission Document													█																																			
Submission													█																																			
Pre-Examination meeting													█																																			
Examination													█																																			
Receipt of Report													█																																			
Adoption													█																																			
<b>Hereford Area Plan</b>																																																
Issues and Place Shaping consultation	█																																															
Preparation of key options	█				█																																											
Public participation on key options													█																																			
Preparation of submission DPD													█		█																																	
Publication of submission document													█																																			
Submission													█																																			
Pre-Examination meeting													█																																			
Examination													█																																			
Receipt of Report													█																																			
Adoption													█																																			



## Development Plan Document profiles

### Core Strategy

#### Document details

Role and subject	Sets out the vision and objectives for the Local Development Framework, together with a spatial strategy, illustrated on a key diagram, for the period up to 2026 (in line with the current review of the Regional Spatial Strategy).
Geographic coverage	County wide
Status	Development Plan Document
Chain of conformity	Must be in general conformity with the Regional Spatial Strategy

#### Timetable

Commencement and evidence gathering	September 2006 – August 2007 Evidence base subject to review and updating
Issues consultation	September – October 2007
Developing Options consultation	June – August 2008
Public consultation on key options	January – March 2010
Preparation of submission DPD	April – December 2010
Publication of Submission Document	February 2011
Submission	April 2011
Pre-Examination meeting	June 2011
Examination	August 2011
Receipt of Report	October 2011
Adoption	December 2011

#### Arrangements for production

Lead service	Forward Planning, Planning Services
Management arrangements	Council to consider and approve submission DPD and to adopt, following proposal by Executive.
Resources	In house resources and existing budgets supplemented by final award of Housing and Planning Delivery Grant. Consultancy support in developing aspects of the evidence base.
Involving stakeholders and the community	As defined in the Statement of Community Involvement

## Hereford Area Plan

### Document details

Role and subject	Sets out proposals for the delivery of sustainable housing and other growth at Hereford, including regeneration proposals within the urban area and infrastructure requirements
Geographic coverage	Hereford and immediately adjoining parts of the County
Status	Development Plan Document
Chain of conformity	Core Strategy

### Timetable

Commencement and evidence gathering	June 2008 – August 2009
Issues consultation	January – March 2010
Preparation of key options	April 2010 to August 2011
Public participation on key options	September to November 2011
Preparation of submission DPD	December 2011– July 2012
Publication of Submission document	August 2012
Submission to Secretary of State	October 2012
Pre-Examination meeting	December 2012
Examination	March 2013
Receipt of Report	May 2013
Adoption	July 2013

### Arrangements for production

Lead service	Forward Planning, Planning Services
Management arrangements	Council to approve Key Options consultation document; consider changes and approve submission DPD and to adopt, all following proposal by Executive.
Resources	In house resources and existing budgets.
Involving stakeholders and the community	As defined in the Statement of Community Involvement

## Market Towns and Rural Areas Plan

### Document details

Role and subject	Sets out proposals for the delivery of sustainable housing and other development in the County outside the immediate environment of Hereford, focussing on rural regeneration.
Geographic coverage	Whole of the County not covered by the Hereford Area Action Plan
Status	Development Plan Document
Chain of conformity	Core Strategy

### Timetable

Commencement and evidence gathering	June 2009 to December 2009
Issues consultation	January – March 2010
Preparation of key options	April 2010 to August 2011
Public participation on key options	September to November 2011
Preparation of submission DPD	December 2011 to June 2012
Publication of Submission Document	August 2012
Submission to Secretary of State	October 2012
Pre-Examination meeting	December 2012
Examination	March 2013
Receipt of Report	May 2013
Adoption	July 2013

### Arrangements for production

Lead service	Forward Planning, Planning Services
Management arrangements	Council to approve Key Options consultation document; consider changes and approve submission DPD and to adopt, all following proposal by Executive.
Resources	In house resources and existing budgets.
Involving stakeholders and the community	As defined in the Statement of Community Involvement

## Minerals and Waste Development Plan Document

### Document details

Role and subject	Sets out proposals for the delivery of sustainable Minerals and Waste development in the County
Geographic coverage	Whole of the County
Status	Development Plan Document
Chain of conformity	Core Strategy

### Timetable

Commencement and evidence gathering	May 2009
Issues consultation	September – November 2011
Preparation of key options	December 2011 to August 2013
Public participation on key options	September 2013 – November 2013
Preparation of submission DPD	December 2013 to June 2014
Publication of Submission Document	July 2014
Submission to Secretary of State	October 2014
Pre-Examination meeting	January 2015
Examination	March 2015
Receipt of Report	May 2015
Adoption	July 2015

### Arrangements for production

Lead service	Forward Planning, Planning Services
Management arrangements	Council to approve Key Options consultation document; consider changes and approve submission DPD and to adopt, all following proposal by Executive.
Resources	In house resources and existing budgets.
Involving stakeholders and the community	As defined in the Statement of Community Involvement

## 4. Supplementary Planning Documents and Guidance

### *Supplementary Planning Guidance to the UDP*

Supplementary Planning Guidance is no longer prepared under the arrangements for the Local Development Framework. However, there are a number of such documents which remain in use under the transitional arrangements, and which provide supplementary guidance to the UDP. These are:

- Design and development requirements SPG (until it is replaced by the Design Code for Herefordshire)
- Reuse and adaptation of rural buildings SPG
- Biodiversity SPG
- Landscape Character Assessment SPG

In addition, a number of local communities have brought forward Village Design Statements and Parish Plans, the relevant sections of which have been adopted as interim SPG to the UDP.

### *Supplementary Planning Documents*

Since 2004 Supplementary Planning Documents (SPD) have replaced Supplementary Planning Guidance (SPG) as a means of setting out the Council's planning policies at the level below that of adopted DPDs. Notwithstanding their change in status since the Planning Act 2008 they remain Local Development Documents and are material planning considerations when considering proposals for development.

By December 2009 the following SPDs had been adopted and are in effect. They are available on the Council's website.

<b>Title of SPD</b>	<b>Date of Adoption</b>
Land at Former Whitecross School : Development Brief	June 2006
Land at Shobdon : Development Brief	September 2006
Edgar Street Grid : Design Framework	November 2007
Planning Obligations	February 2008
Model Farm, Ross-on-Wye, Development Brief	October 2008
Polytunnels	December 2008
Archaeology and Development	October 2009

## 5. Supporting statement

### *How the Local Development Documents work together*

The diagram overleaf illustrates how the various documents discussed in this Scheme will work together to provide a Local Development Framework for Herefordshire.

### *Evidence base*

The Council has a sound basis of evidence to use in developing its Framework. Much of this has been built up and refined over a period of time, while in other subject areas specific studies have been commissioned and are underway. The evidence base comprises the following principle resources and technical studies:

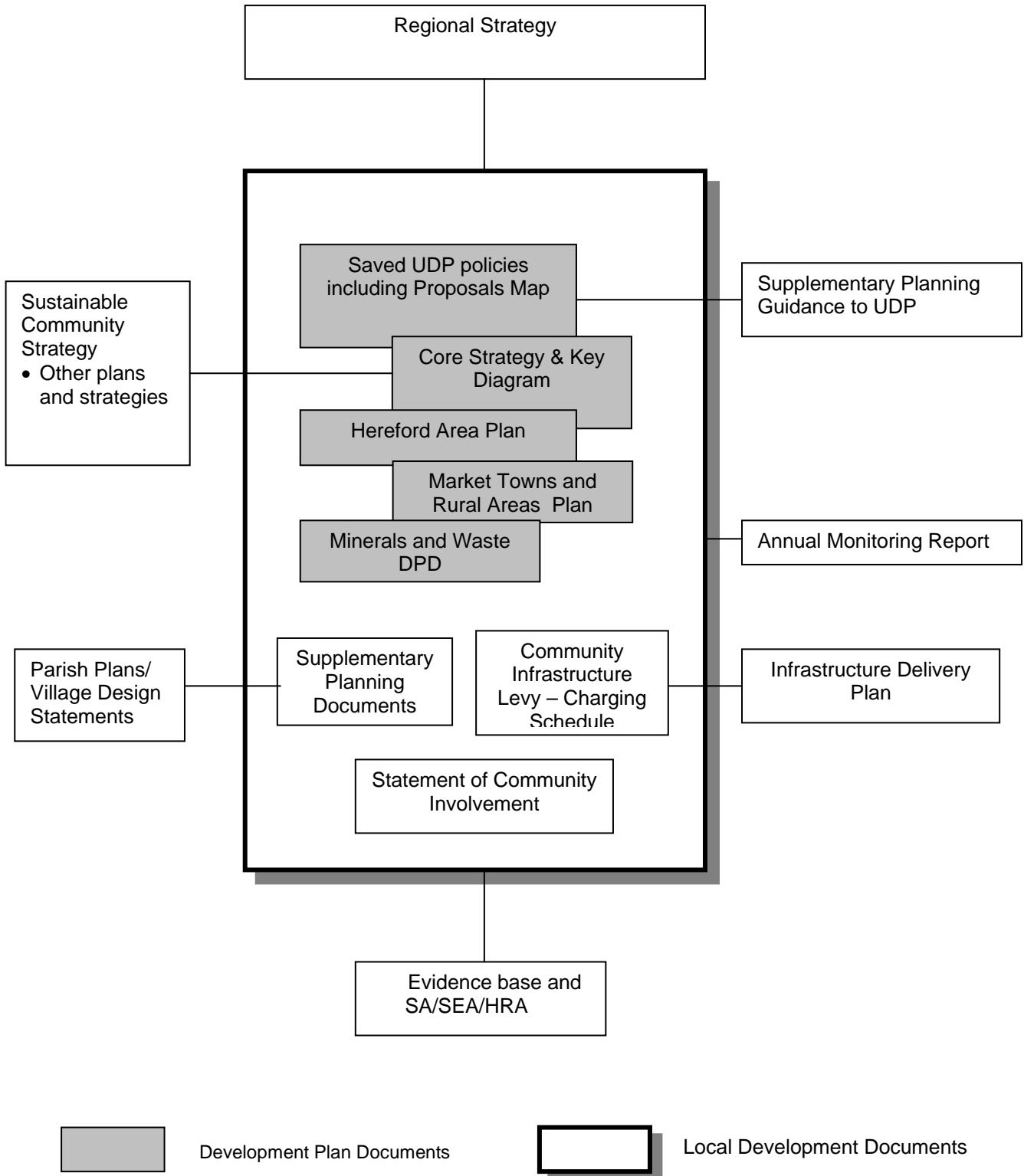
<b>Title</b>	<b>Current edition</b>	<b>How the evidence base will be managed</b>
Annual Monitoring Report (incorporates housing and employment land studies)	2008-2009 (submitted December 2009)	Annual review
Housing Needs Studies	County wide study 2005, followed up by studies for individual settlements as resources permit	Rolling programme of studies based on settlements
Strategic Housing Land Availability Assessment	Published in November 2009 – to be updated in 2010	Monitored through annual housing land study and periodic review
Sub-regional Housing Market Assessment	Main Study complete. Viability study for Affordable Housing published in March 2010	Periodic review
Water Study, comprising assessment of water supply, treatment, infrastructure and flooding (PPG25 Strategic Flood Risk Assessment)	Strategic Flood Risk Assessment completed in 2008. Water Cycle Study published in 2009	Periodic review
National Land Use Database (NLUD)	2006 submission to national database	Annual review
Employment Land Review	Study updated and published November 2009	Periodic review
Retail study (PPS6 Assessment)	Study updated and published September 2009	Periodic review
Green Infrastructure Strategy	Published in February 2010	Periodic review
Open space study (PPG17)	Initial study completed – further work being developed to create a strategy – expect completion during 2010	Periodic review
Hereford Multi Modal Model Study - Transportation Assessment for Hereford and environs	Study carried out jointly with Highways Agency and published in September 2009	Likely to be supplemented by subsequent reports (see below)
Delivering a Sustainable Transport System	Study being undertaken by the Highways Agency – results to be published during 2010	By the Highways Agency

<b>Title</b>	<b>Current edition</b>	<b>How the evidence base will be managed</b>
Hereford Relief Road Study	Study being undertaken by consultants (Amey) – Stage 2 report expected in July 2010	To be further developed as part of detailed proposals for the Hereford Relief Road.
Minerals and Waste Appraisal	Study finalised and published in June 2009	Annual return to Regional Planning Body
Gypsy and Traveller Accommodation Assessment	Study published in 2008. Latest revisions due to be published during 2009	Annual monitoring of planning decisions
Landscape Character Assessment and other Urban Characterisation Assessments	Draft Landscape Character Assessment SPG published in 2004 and updated in 2009. Other Assessments as published on the Council's website.	Periodic review
Renewable Energy Study	To be undertaken during 2010	To inform Core Strategy Policies and thereafter help establish monitoring measures
Economic Viability Study	To be undertaken during 2010	Periodic review as needed to inform policies on developer contributions to infrastructure.
Regional monitoring of offices, retail, hotels/leisure, minerals and waste	Regional Planning Guidance Annual Monitoring report, 2009	Annual return to Regional Planning Body

The evidence base is being continuously developed but it is worthy of note that several of the major elements were completed during 2009. In particular the Strategic Housing Land Availability Assessment, the Multi Modal Model (highways assessment), the employment and retail studies and the Minerals and Waste Assessment were all completed during 2009.

The evidence base feeds into and is supplemented by information collected for other Council and Herefordshire Partnership Strategies, including the Housing Strategy and the Economic Development Strategy.

## The Local Development Framework for Herefordshire



### *Sustainability appraisal, strategic environmental assessment and Habitats Regulations Assessment*

Local Development Documents have to be prepared with a view to contributing to the achievement of sustainable development – the simple idea of seeking a better quality of life for everyone, now and for future generations. Planning authorities also have to meet the requirements of the European Union Directive on strategic environmental assessment (SEA). Sustainability appraisal (SA) is a systematic and iterative appraisal process, incorporating the requirements of the SEA Directive. The appraisal process has an important role to play in the production of Local Development Documents, ensuring that policies reflect sustainable development principles by providing information on the potential social, environmental and economic effects of policies.

To ensure that a consistent approach is taken to SA throughout the Local Development Framework process, the Council has prepared a General Scoping Report which defines an overall framework for sustainability appraisal. This will be used as a baseline in all subsequent appraisals to be conducted on Local Development Documents.

SA is an integral part of the production of DPDs. At specific stages in the process of producing these documents appraisal reports will be produced, for instance, to accompany the submission of DPDs to the Secretary of State.

In addition to SA and to meet the requirements of the European Habitats Directive, the Council will undertake a Habitats Regulations Assessment (HRA) of DPDs where it is determined that they are likely to have significant effects upon the conservation objectives of a site designated as a European site of nature conservation interest (Special Protection Areas) and Special Areas of Conservation. While recognising that SA and HRA are two distinctively separate processes, the Council will undertake them in conjunction with one another in accordance with Government guidance. In accordance with this guidance, outputs for HRA will be clearly distinguishable and reported on separately.

### *Delivering the Framework*

The planning policies set out in the Local Development Framework will be delivered in many ways. The refusal or grant of planning permission, and the use of planning conditions and obligations, will remain one of the most important means by which the Council's planning policies are implemented. However the emphasis on a spatial planning approach - which seeks to reconcile competing demands for land in a planned way – means that working with others has become more important.

Here, the link between the documents comprising the LDF and the Sustainable Community Strategy (SCS) is all important. The LDF is a key mechanism for delivering the land use aspects of the Plan, but also provides a long term spatial context within which the SCS can be progressed.

The need to recognise the link between land use planning policy and the SCS has long been recognised in Herefordshire. The UDP is already set firmly within the overall SCS approach. These close links will be continued and strengthened as the LDF is established. The SCI for instance builds on existing community consultations undertaken by the Herefordshire Partnership.

### *Council procedures for approval*

The Local Development Framework forms part of the Council's overall Policy Framework as defined in the Constitution. The Executive (Cabinet including the Leader of the Council) has responsibility for proposing elements of the Policy Framework to Council, with the Cabinet Member (Environment and Strategic Housing) having responsibility for planning and land use matters (excluding development control). The following responsibilities for approving different documents within the Framework reflect the varying conformity arrangements, and the fact that documents differ both in the extent to which they define policy and are used in the determination of planning applications.

Development Plan Documents: Council, following proposal by Cabinet

Supplementary Planning Documents: Cabinet Member, following consultation with Planning Committee.

Statement of Community Involvement and Local Development Scheme: Cabinet Member.

### *Monitoring and review*

The Local Development Framework system incorporates an Annual Monitoring Report – the AMR. This must be compiled on a financial year basis and submitted to the Government Office by the end of the calendar year. The AMR tracks progress against the targets and milestones set out in this scheme for producing LDDs, and the extent to which policies in LDDs are being achieved.

Each year the AMR will:

- Specify to what extent the timescales set out in the LDS for the production of LDDs are being met
- Review the extent to which policies within LDDs are being achieved, focussing initially on key policy areas where information is available and where national, regional or local targets have been set.
- In particular, the AMR will report on the number of dwellings built in Herefordshire during the period covered by the Report and relate this to relevant LDD policies
- Consider whether any policies need amendment because they are not working as intended or are not achieving sustainable development objectives and, if so, suggest ways to achieve this
- Consider the need to review the LDS in the light of the AMR. The Scheme will be revised each time the list of Local Development Documents changes, either by addition of a new proposed Document or through significant revision to the timetable for the preparation of a Local Development Document.

Monitoring is undertaken within the Forward Planning Team of the Council. In addition, the Herefordshire Partnership carry out a monitoring exercise against the ambitions and aims of the Sustainable Community Strategy. This is published as a regular "State of Herefordshire" Report. Over time, the monitoring of planning policies set out in the AMR will need to be aligned with that carried out on the Sustainable Community Strategy, reflecting the role of the LDF as the key delivery mechanism for those Strategy ambitions with a spatial dimension.

## 6. Contacts for Further Information

Council's website: [www.herefordshire.gov.uk/ldf](http://www.herefordshire.gov.uk/ldf)  
Email: [ldf@herefordshire.gov.uk](mailto:ldf@herefordshire.gov.uk)  
Telephone: 01432 260500  
Fax: 01432 383031  
Post: Planning Policy Team  
Sustainable Communities Directorate  
Herefordshire Council  
P.O. Box 4  
Plough Lane  
Hereford  
HR4 0HX