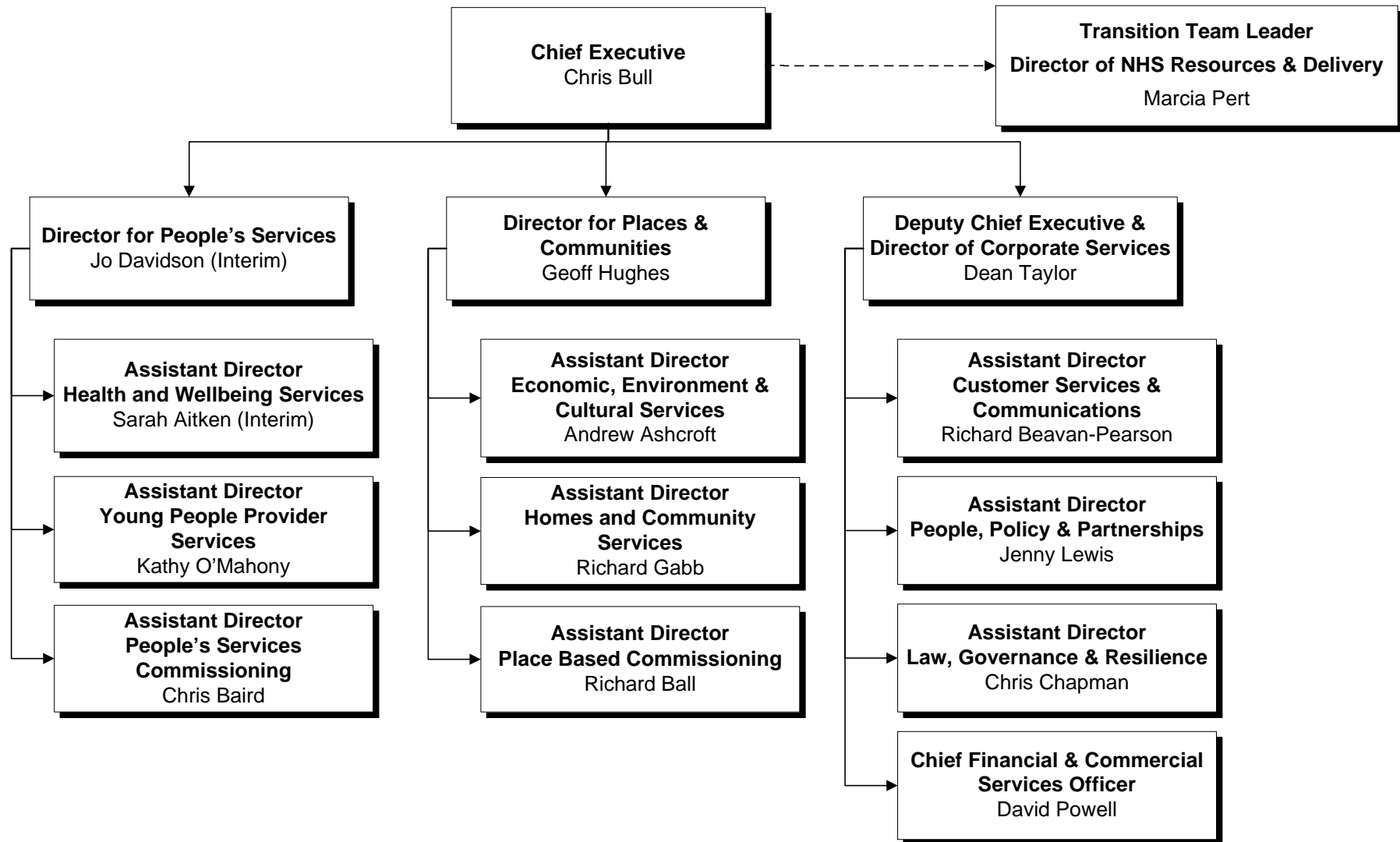


HEREFORDSHIRE PUBLIC SERVICES LEADERSHIP STRUCTURE



Herefordshire is the first place in the country to appoint a single Chief Executive for both the Council and NHS Herefordshire. It is all part of an innovative and enhanced partnership designed to improve public services, achieve better value for money and ensure that Herefordshire continues to make decisions on how local public services are delivered.

The functions of each part of the structure are given below.

Director for People's Services

People's Services Commissioning (Adults, Children & Health)	Children and Young People's Provider Services	Provider relationship management, contract management and performance monitoring.	Health & Wellbeing Services
<ul style="list-style-type: none">• Central area wide commissioning function for Public Health, Adult Social Care, Children's Social Care• Shapes the service, performance frameworks and joint review processes.• Joint working with GPCC, ICO and other commissioners• Specific and joint service re-design and improvement.• Balances all stakeholder demands to develop a single set of area wide priorities and objectives for delivery of the community's aspirations (outcomes related to programmes)• Develops frameworks for Quality Assurance and Performance	<ul style="list-style-type: none">▪ Delivery of Children and Young People's Services▪ Responsibility for central resource bank and multi-disciplinary teams.▪ Regulation and Safety (Safeguarding) Teams.▪ Educational Psychologists▪ Community Operations▪ Improvement & Inclusion▪ Schools Inspectors▪ Schools Support – Early Years, Behaviour, Subject Advisors, Literacy, etc.		<ul style="list-style-type: none">▪ Delivery of Public Health agenda▪ Director of Public Health▪ Health Promotion▪ Health Improvement▪ Consultant Contracts▪ Maintains relationship with Health and Wellbeing Board▪ Health & Public Protection▪ Environmental Health▪ Trading Standards▪ Licensing

Director for Places & Communities

Place Based Commissioning	Economic, Environment & Cultural Services	Provider relationship management, contract management and performance monitoring.	Homes & Community Services
<ul style="list-style-type: none"> • Central area wide commissioning function for Economic & Cultural Services, Highways, Transport, Housing and Community, Environment, Planning & Waste, Environmental Health & Trading Standards • Shapes the service, performance frameworks and joint review processes. • Specific and joint service re-design and improvement. • Balances all stakeholder demands to develop a single set of area wide priorities and objectives for delivery of community aspirations (outcomes related to programmes) • Develops frameworks for Quality Assurance and Performance 	<ul style="list-style-type: none"> ▪ Planning Policy ▪ Development Management ▪ Conservation ▪ Building Control ▪ Markets, Fairs and Street Trading ▪ Bereavement Services ▪ Waste Management ▪ Sustainability ▪ Economic Development ▪ Tourism ▪ Food & Marketing ▪ Cultural Services (Heritage, Arts, Homes & Libraries) ▪ Regeneration Programmes ▪ Grants & Programmes 		<ul style="list-style-type: none"> ▪ Housing Needs & Development ▪ Private Sector Housing ▪ Homepoint ▪ Homelessness and Housing Advice ▪ Community Development ▪ Community Engagement ▪ Manages relationships with communities, e.g. Local Commissioning Hubs, Parish Councils, Community Groups. ▪ Big Society Hotline: support and advice <p>for local initiatives</p> <ul style="list-style-type: none"> ▪ Safer Herefordshire ▪ Highways ▪ Public Rights of Way ▪ Parks & Countryside ▪ Transportation ▪ Community Protection ▪ Parking

Deputy Chief Executive & Director of Corporate Services

Customer Services and Communications	Law, Governance & Resilience	People, Policy & Partnerships	Chief Finance & Commercial Services Officer
<ul style="list-style-type: none"> • Customer Services • Stakeholder Communications/ PR • Customer Insight 	<ul style="list-style-type: none"> ▪ Legal Services ▪ Governance ▪ Chief Executive Office ▪ Business Continuity Planning and Risk ▪ Emergency Planning 	<ul style="list-style-type: none"> ▪ Policy and Performance ▪ Strategic Planning, Policy Formulation and Corporate and Service Planning ▪ Human Resources and Organisation Design, and business transformation programmes ▪ Partnerships including all partnership support functions across the organisation ▪ Information, Research and Needs Analysis ▪ ICT ▪ Corporate Programmes 	<ul style="list-style-type: none"> ▪ Commercial Services including Local and Strategic Commissioning Support ▪ Commissioning of Shared Services ▪ Client Side Property Services ▪ Audit ▪ Section 151 and Finance Functions (with report line to Chief Executive)

**Transition Team Leader
(Director of NHS Resources & Delivery)**

- Lead the local NHS through the national transition process supporting the development of the Clinical Commissioning Group in Herefordshire
- Provide a link to the NHS sub-regional cluster arrangements